



FANTECH

ENGLISH

Instruction Manual

Thank you for purchasing FANTECH TITAN X4S Macro PRO Gaming Mouse.

FANTECH TITAN X4S has 10 millions switch and also support up to 4800DPI with RGB switch button, to make you pinpoint accurate and to land more killing blows when playing the game.

FANTECH TITAN X4S is a plug and play usb interface programmable mouse, no need to install any driver for your first use. For more enhanced settings and function. You can install the software from our website www.fantechworld.com

Technical Specification

- Gaming Optical Sensor
- On-the-fly Adjustable 4 Stage DPI
- 1000Hz Polling Rate
- 10,000,000 Clicks Lifetime
- 1.8m Nylon Braided Cable
- Silicon Rubber Roller
- RGB Chroma Luminous Light
- Low-friction Feet
- Size: 122mm x 68mm x 40 mm

Size



TITAN X4S

MACRO PRO GAMING MOUSE

What's included in the box

1. FANTECH TITAN X4S Macro PRO Gaming Mouse
2. User manual

System requirements

1. Operating systems: Windows XP/7/8/10; MAC OS
2. One free USB 2.0/3.0 port

USER MANUAL

Keys Function Map



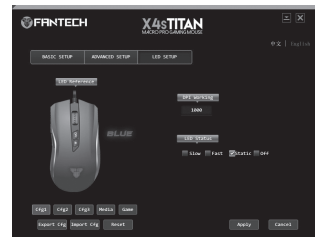
KEY	KEY FUNCTION MAP
1	LEFT BUTTON
2	MID BUTTON
3	RIGHT BUTTON
4	FORWARD
5	BACK
6	DPI
7	RGB SWITCH

Software



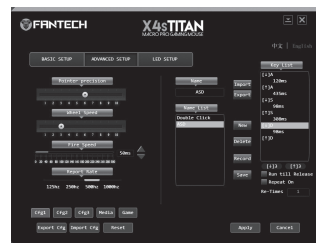
Basic setup

- * You can program your mouse button to any multimedia function and gaming function by selecting the mouse number and select your desire command on the button assign bar.
- * You can customize your mouse DPI level on the DPI setting
- * Press Apply to save changes.



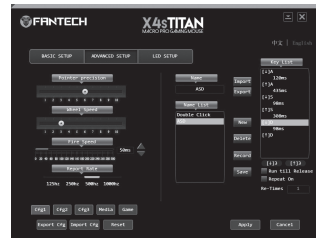
LED setting

- * Customize your mouse LED to slow, fast static and off in LED status bar.
- * Press save to changes.



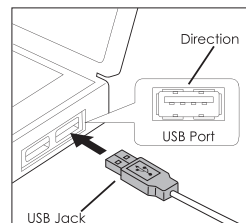
Advanced setup

- * You can customize your mouse pointer precision, wheel speed , fire speed and report rate on advanced setting bar.
- * Press apply to save changes.



Macro setting

- * To create a new macro in settings, input the name of the macro ,then press "new" bar , then input the key list. Example:
 - Add macro key name "ASD"
 - Press Record Button and type "ASD"then press Stop Recording
 - You can edit delay time/cycle before saving.
 - Press save/apply button to save your macro "ASD"
- * To use your macro "ASD"
 1. Go to base setup bar
 2. Select button you want to apply the macro "ASD"
 3. Then select Macro and select ASD
 4. Save & Apply
 Your button will be used as "ASD"
- * To check your Macros
 1. Go to notepad
 2. Click the assigned macro button
 3. It should type ASD
 Note: "ASD" is just an example, you can use your own keys for macros.



How to connect

Its plug and play. Connect the mouse to computer by inserting USB jack to your computer USB port.