



ENGLISH

Instruction Manual

Thank you for purchasing FANTECH HERO UX1 Ultimate Macro RGB Gaming Mouse.

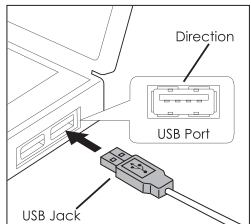
FANTECH HERO UX1 has 50 millions switch and also support on-board memory which can save up to hundreds of different profiles.

FANTECH HERO UX1 is a plug and play usb interface programmable mouse, no need to install any driver for your first use. For more enhanced settings and function. You can install the software from our website www.fantechworld.com

Technical Specification

- Pixart 3389 Gaming Sensor
- Up to 400ips / 50g Acceleration
- On-the-fly Adjustable DPI 50-16000DPI
- 1000 Hz Polling Rate
- Omron 50.000.000 Clicks Lifetime
- RGB 16.8 Million Customizable Color Options
- Eight Independently Programmable Buttons
- 1.8m Nylon Braided USB Cable
- Size: 130mm X 70mm X 40mm

How to connect



Its plug and play. Connect the mouse to computer by inserting USB Jack to your computer USB port.

Software

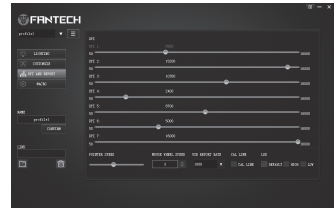


Lighting

- * You can customize your LED color mode by clicking on the lighting bar, and choose your desire color mode and brightness.
- * You can change the color of the mouse illumination LED.
- * Select the single color that you want to use by selecting static mode.

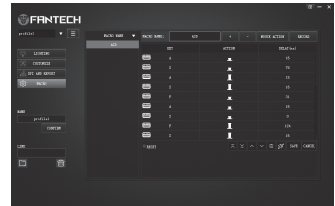


KEY	CUSTOMIZE
1	LEFT CLICK
2	RIGHT CLICK
3	FORWARD
4	MIDDLE CLICK
5	BACKWARD
6	DPI +
7	DPI SHIFT
8	DPI -



DPI and report

- * Customize your mouse DPI level, Sensitivity, Scrolling speed, & Report rate on DPI and report bar.
- * Program your mouse button to any multimedia function and gaming function by selecting the mouse number and select your desire command on the customize bar.
- * Press Apply to save changes.



Macro Editor

- *To create new macro, follow steps below:
1. Click "MACRO" bar
 2. Click "+" bar
 3. Input "MACRO NAME"
 4. Click "RECORD" to start recording and click "STOP" to stop recording the macro key (Delay/cycle time can be edited before saving)
 5. Click "SAVE" to save the macro

- *To use the macro
1. Click "CUSTOMIZE" bar
 2. Select the designation button
 3. Select macro and choose the "MACRO NAME"
 4. Click "APPLY"

Warning

- * Do not attempt to open, service or modify this mouse to prevent the risk of electricity shock or other hazard and void the warranty
- * Do not remove or change the warranty label.
- * Clean using only with dry cloth. Do not use alcohol or detergent.
- * Keep away from fire or any heat more than allowed operating and storage condition.

ID

Perhatian

- * Jangan pernah mencoba untuk membuka, servis atau memodifikasi mouse ini untuk menghindari resiko sengatan listrik atau bahaya lainnya dan membatalkan garansi
- * Jangan membuang atau merubah label garansi
- * Bersihkan hanya dengan kain kering, jangan menggunakan alkohol atau deterjen
- * Jauhkan dari api atau panas yang melebihi suhu pemakaian dan penyimpanan

TH

คำเตือน

- * อย่าพยายามเปิดบริการหรือปรับเปลี่ยนเมาส์นี้เพื่อป้องกันความเสี่ยงของจลไฟฟ้าหรืออันตรายอื่น ๆ และเป็นโมฆะการรับประกัน
- * อย่าลบหรือเปลี่ยนป้ายการรับประกัน
- * ทำความสะอาดโดยใช้ผ้าแห้งเท่านั้น ห้ามใช้แอลกอฮอล์หรือผงซักฟอก
- * เก็บให้ห่างจากไฟหรือความร้อนมากกว่าที่อนุญาตให้ใช้งานและสภาพการเก็บรักษา

Operating conditions

1. Operating temperature: -25 C ~ 65 C ± 10 C	3. Operating humidity: 10 - 90% rh
2. Storage temperature: -40 C ~ 70 C ± 10 C	4. Storage humidity: -5 - 95% rh

What's included in the box

1. FANTECH HERO UX1 Ultimate Macro RGB Gaming Mouse
2. 1 set mouse skates
3. User manual

System requirements

1. Operating systems: Windows XP/7/8/10; MAC OS
2. USB 2.0/3.0 port

USER MANUAL

HERO UX1

ULTIMATE MACRO RGB GAMING MOUSE