

Instruction Manual

Thank you for purchasing FANTECH BLAKE X17 Macro RGB Gaming Mouse.

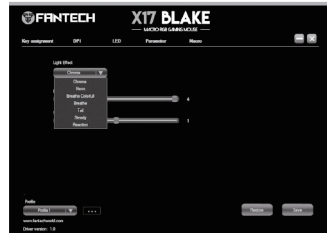
FANTECH BLAKE X17 has 20 millions switch and also support on-board memory which can save up to hundreds of different profiles.

FANTECH BLAKE X17 is a plug and play usb interface programmable mouse, no need to install any driver for your first use. For more enhanced settings and function. You can install the software from our website www.fantechworld.com

Technical Specification

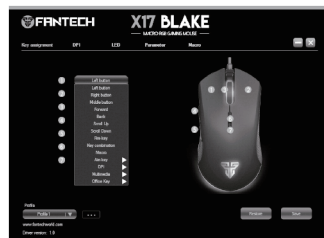
- Pixart 3325 Gaming Optical Sensor
- Up to 100ips / 20g Acceleration
- On-the-fly Adjustable DPI 250-10000DPI
- 1000Hz Polling Rate
- Huano 20,000,000 Clicks Lifetime
- Ergonomic Both Handed Design
- RGB 16.8 Million Customizable Color Options
- Seven Independently Programmable Buttons
- 1.8m Braided Fiber USB Cable
- Size: 125mm X 62mm X 42mm

Software



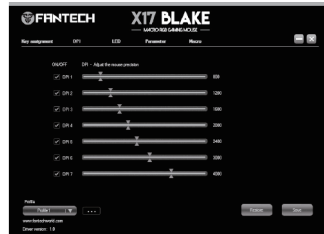
LED

- * You can customize your LED color mode by clicking on the LED bar. And choose your desire color mode and brightness.
- * You can change the color of the mouse illumination LED.
- * Select the single color that you want to use by selecting steady mode.



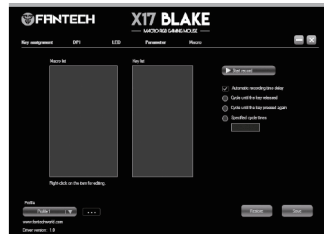
Key assignment

- * You can program your mouse button to any multimedia function and gaming function by selecting the mouse number and select your desire command on the key assignment bar.
- * Press Apply to save changes.



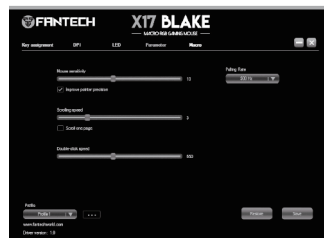
DPI setting

- * Customize your mouse DPI level on DPI setting.
- * You can turn ON/OFF the DPI by check or uncheck the ON/OFF bar.
- * Press save to changes.



Macro setting

- * To create a new macro in settings, right click in macro list bar, input the macro key name and then input key list.
 - Example:
 - Add macro key name "ASD"
 - Press Start Record Button and type "ASD" then press Stop Recording
 - You can edit delay time/cycle before saving.
 - Press save/apply button to save your macro "ASD"
- * To use your macro "ASD"
 1. Go to key assignment bar
 2. Select button you want to apply the macro "ASD"
 3. Then select Macro and select ASD
 4. Save & Apply
 Your button will be used as "ASD"
- * To check your Macros
 1. Go to notepad
 2. Click the assigned macro button
 3. It should type ASD
 Note: "ASD" is just an example, you can use your own keys for macros.

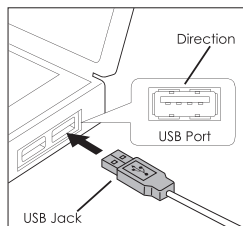


Parameter

- * Customize your mouse Sensitivity, Scrolling speed, Polling rate & Double click speed.
- * Press save to changes.

How to connect

Its plug and play. Connect the mouse to computer by inserting USB jack to your computer USB port.



BLAKE X17

MACRO RGB GAMING MOUSE

What's included in the box

1. FANTECH BLAKE X17 Macro RGB Gaming Mouse
2. 1 set mouse skates
3. User manual

System requirements

1. Operating systems: Windows XP/7/8/10; MAC OS
2. One free USB 2.0/3.0 port