



For additional tips and tricks, watch the installation video by visiting our website or scanning the QR code with your smartphone!

Part Number: 6130



2017-2019 Ford Superduty Raptor-Style Grille Lights

<u>Parts List:</u>	<u>Quantity:</u>	<u>Tool List:</u>
Light Bar Assembly	1	• Flat head/ Phillips screwdriver
PB-6130 Parts Bag	1	• Ratchet & socket set
		• Pliers

Thank you for purchasing one of our products. Please familiarize yourself with the parts included as well as the instructions before attempting installation. Please seek the help of a certified technician if you feel unable to complete the installation safely and properly. Failure to read and follow the instructions below may result in personal injury or damage to property. Starkey Products, Inc. and our retailers assume no liability for failures to comply with guidelines and warnings outlined in this instruction manual.

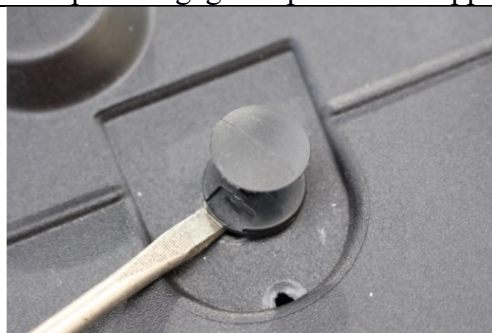
Loosening the Grille:

Before beginning the steps below, turn off the vehicle, remove key, and engage the emergency brake.

1. Open hood of truck and make sure it is held open securely.
2. Remove the black plastic radiator cover. The panel is attached by plastic pins. The pins are removed by prying up on center part and then prying up on the body of the pin. See picture 1 & 2. Save pins and black panel for re-installation later.
3. Remove the 8 bolts (10mm) located below the radiator cover.
4. Loosen the grille so that the light bar can be slipped into place. The grille does not have to be removed, but you need to loosen it enough to create a 1-2 inch gap at the top. The only thing holding the grille on are clips that are located on the inside of the grille (see picture 3). Gently but firmly pull outward until the clips disengage. Repeat on the opposite side.



Remove radiator cover. Save push pins for re-install later. **1**



Pry up on center part of pin first. Then pry out entire retainer pin. **2**



Clips hold grille in place – pull outward to un-clip each side. **3**

Installing the Light Bar:

At this point you have loosened the grille enough to separate the grille from the radiator support and slide the light bar into place. The light bar has two mounting ears that we will use to center it on the grille and hold it securely in place.



Slide light bar into place as shown.

4

Slide wire into place and close wire tap completely.

5

Plug red wire into the wire tap as shown above.

6

1. While the grille is tilted forward, slide the light bar into place. See picture 4.
2. Route the wiring along the top of the grille toward the driver side. Be sure it does not hang down and exits the grille without getting pinched.
3. Re-install grille into place by aligning the clips on both sides and pressing inward until you hear the clips 'click'.
4. Re-install the 8 bolts on the top of the grille. You may have to move the light bar or grille around to get the holes to line up properly – this is normal.

Connecting the Wiring:

1. Attach the **black** ground Ring Terminal to any one of multiple ground locations. This could be attached to the ground (black) battery cable, or an existing ground bolt nearby (one is located behind the drivers side battery on the inner fender).

The standard installation of this product uses the provided wire tap. If you purchased one of our plug-n-play parking light adapters SKU# 4531 (Halogen Headlights) or SKU# 4532 (LED Headlights), please connect it and skip to Page 3.

Wiring will vary depending on the type of headlamps you have. If you have the halogen headlamps (yellow light output), follow step 1 below. If you have the LED headlamps (white light output), skip to step 5.

1. **Halogen Headlamps** = Locate the running light bulb connector behind the headlight on the driver side. It has two wires coming out of it.
2. Unplug the connector and carefully pull back the electrical tape to expose the wiring.
3. Using the supplied red wire tap, slide the Green wire with Orange stripe (Pin#2) onto the tap. The wire should sit in the middle of the two teeth. Squeeze down on the wire tap making sure it snaps closed. Do not cut wire! See picture 5.
4. Now skip to step 7.
5. **LED Headlamps** = Locate the rectangular connector plugged into the back of your LED headlamp. It is a 16 position connector, only 7 of the positions are occupied with wires. Unplug the connector.
6. Using the supplied red wire tap, slide the Blue wire with Brown stripe (Pin#3) onto the tap. See picture 5 above. The wire should sit in the middle of the two teeth. Squeeze down on the wire tap making sure it snaps closed. Do not cut wire!
7. Plug the red wire from the Light Bar wiring into the back of the wire tap. See picture 6.

Platinum Grille Installations ONLY - Removing the center post from the grille:

If your truck is a Platinum trim, the grille has a vertical post that is molded into the center of the grille. This partially blocks the center LED. If you would like to remove it, follow step 1 below. If you would rather leave it in place, skip to the Final Installation section.

1. Mark the plastic post you need to cut and double check to make sure you have the correct one.
2. Using a set of cutting pliers or similar tool, cut the plastic post in the middle.
3. Use a pair of pliers to carefully pull each piece of the plastic post off one at a time – you will find moving the plastic bar back and forth a few times will usually result in a clean break at the edge of the opening.
4. Use a razor blade or file to carefully remove any leftover edges of the vertical post. Skip to next section.

Final Installation:

1. Double check everything to make sure it was connected properly. Test the Light Bar to make sure it comes on and off with your other parking lights. This can be done by unlocking the doors with your key fob. If the lights do not come on, visit the trouble shooting guide below.
2. Re-install the radiator cover and make sure all push-pins are re-installed.
3. Enjoy your new Raptor-Style Light Bar! The lights will activate automatically when your parking lights are turned on.

Trouble shooting guide:

Lamps won't turn on –

- Check to make sure you connected **red** wire tap to the correct wire outlined in the 'Connecting the Wiring' section above. This is the MOST common mistake made during installation.
- If you are using one of our plug-n-play adapters, make sure you connected the red wire from the light bar to the proper wire (red) from the adapter. Also make sure both connector ends snapped into each other completely.
- Check the ground ring terminal you connected under the 'Connecting the Wiring' section. Make sure that it is making proper metal-to-metal contact and that the bolt is tightened.

If you are still having trouble with your product, please contact us for technical assistance. Tech support is available via phone Monday through Friday 9am-5pm. Email tech support is available during regular business hours as well as weekends, holidays, and evenings.

Starkey Products, Inc.

Phone: (386) 951-6335

Email: Tech@Starkey-Products.com

Website: www.Starkey-Products.com

Limited Warranty:

This warranty covers defects in materials or workmanship in any component sold by Starkey Products, Inc. or its authorized dealers. Warranty is effective for five years from the date of purchase. Coverage terminates if you sell or transfer ownership of the product. Starkey Products will repair or replace the defective or malfunctioning product or any defective or malfunctioning part thereof at no charge. This warranty covers parts and labor only. This warranty does not cover any problem that is caused by abuse, misuse, acts of God, or improper installation. Any modification or alteration to any component will void the product warranty. Warranty does not cover wear that any components receive through the normal course of operation and use (including but not limited to bulbs). All warranty claims require proof of purchase.*

**Any painted surfaces are guaranteed not to bubble, peel, or crack for the duration of the warranty period. Warranty does not cover normal wear and tear resulting from impacts, scratches, road debris, or harsh chemicals.*