

STARKEY

PRODUCTS

2005-2009 Ford Mustang V6 Fog Light Wiring Kit

<u>Parts List:</u>	<u>Quantity:</u>	<u>Tools Required:</u>
Wiring harness	1	• Flat head screwdriver
PB-3425 Parts Bag	1	• Ratchet & Socket set OR
OEM-Style Switch (if you ordered part # 3450)	1	• Adjustable Wrench
		• Small knife

Thank you for purchasing one of our products. Please familiarize yourself with the parts included as well as the instructions before attempting installation. Failure to read and follow the instructions below may result in personal injury or damage to property. Starkey Products, Inc. and our retailers assume no liability for failures to comply with guidelines and warnings outlined in this instruction manual.

Wiring in Engine Bay:

1. Open hood of car and make sure hood is held open securely. Turn car off and remove the key.
2. Locate the fuse box. It is located behind the passenger side head light. Remove the access cover.
3. Remove the black panel which covers the radiator/grille (shown in picture 2-1). The panel is attached by 6 plastic pins. The pins are removed by prying up on center part and then prying up on the body of the pin. Save plastic pins for re-install later. See picture 2-2.
4. Disconnect negative (black) battery cable from the car battery. This is done by loosening the bolt located on the side of the battery cable terminal with an 8mm socket or wrench. Pull back the cable so it will not make contact with the battery terminal. Make sure the cable has been disconnected! This is important!
5. Connect the **orange** wire to the positive (+12 volt) power cable entering the fuse box shown in picture 2-3 below. A 10mm socket or wrench can be used to remove the bolt holding the +12v power supply cable. A ring terminal is located at end of **orange** wire which will slide onto the bolts' post. Re-attach bolt tightly. While tightening be careful not to allow your wrench or ratchet to come in contact with any other metal object such as the car body.
6. Re-install the fuse box cover.



Remove black panel shown. Save 6 retaining pins for re-install later.



Pry up on center part of pin first. Then pry out entire retaining pin.



Line up the power cable with the orange wire so that the cover closes.

7. Use a 10mm socket or wrench to attach the **black** ground wire to one of the bolts shown in picture 2-4 below. Re-attach the bolt so the ring terminal makes proper contact and the bolt is tight.
8. Route the wiring harness along the radiator support and frame of the car. The best way to do this is to follow the existing bundle of wiring.
9. Route the wiring for each fog light into the proper locations and plug bulb connectors into the fog lights (if the grille/ fog lights have already been installed).
10. Route wiring for the switch along the driver's side fender towards passenger compartment.
11. Open the drivers' side door and locate black rubber boot to the left of the pedals. Carefully pull to remove from the firewall. See picture 2-5. This is where we want to route the switch wiring into the passenger compartment.
12. The easiest way to do so is to route the wiring down past the brake booster toward the ground. Follow the existing bundle of wiring. Tip: Shine a flash light through the hole in the passenger compartment – this will assist you in feeding the wires down to the proper location from the engine bay.
13. While inside the passenger compartment, pull the switch wiring through the firewall.
14. Carefully use a razor or knife to cut an 'X' in the rubber boot. Then gently feed the switch wiring through the 'X' cut in the boot. See picture 2-6.
15. Re-install rubber boot in the firewall by pushing it back into the hole firmly. Make sure it seals completely so that no leaks are possible.



You may attach the ground wire to either bolt in the picture above.



Pull boot carefully but firmly out of the firewall.

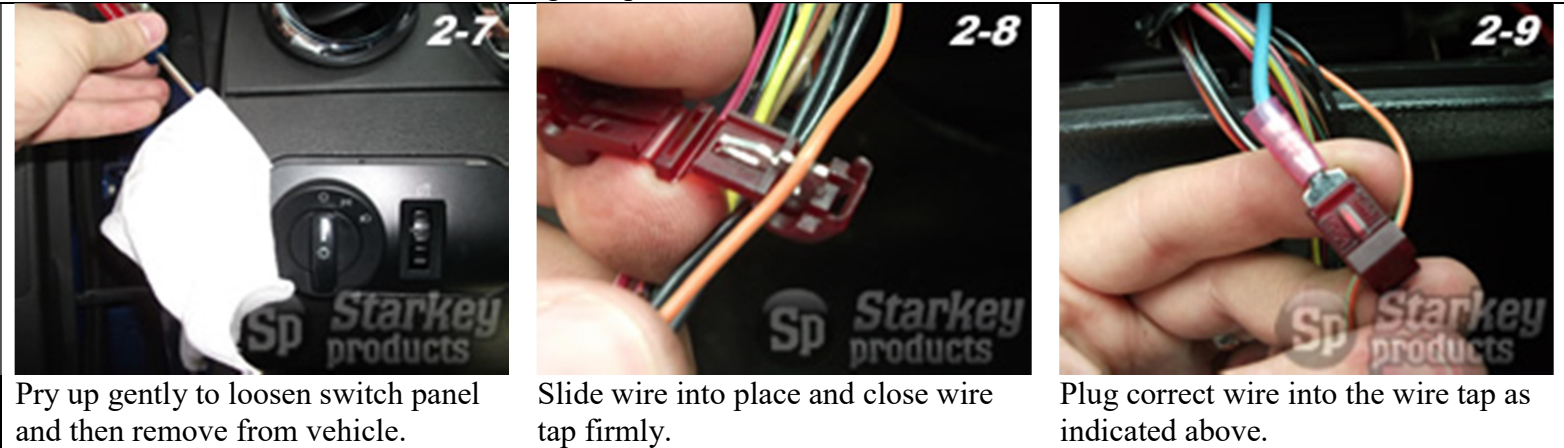


Cut small "X" in boot and route wiring through the hole.

Installing switch in passenger compartment:

1. Using a flat head screw driver wrapped in a rag, carefully pry up on the switch panel from the top left corner to loosen and remove it. See picture 2-7 below.
2. Pull out switch panel several inches, disconnect wiring, and then remove from car.
3. Electrical tape is wrapped around the bundle of wires that plugs into the switch. Carefully un-wrap tape several inches so you have better access to individual wires.
4. Using one of the supplied red wire taps, slide the **Orange** wire with **Light Green** stripe onto the wire tap. See picture 2-8 below. The wire should sit in the middle of the two teeth. Squeeze down on the wire tap making sure it snaps closed. Do not cut Wire! Note: If you do not see this wire, visit page 5 for special instructions.
5. Plug the **blue** wire from the fog light wiring into the back of the wire tap connected to the Orange wire with Light Green stripe. See picture 2-9 below.
6. Using the second red wire tap, repeat the process by sliding the **Violet** wire with **Orange** stripe onto the wire tap and closing the wire tap. Note: If you do not see this wire, visit page 5 for special instructions.

7. Plug the **red** wire from the fog light wiring harness into the back of the wire tap connected to the Violet wire with Orange stripe.



Pry up gently to loosen switch panel and then remove from vehicle.

Slide wire into place and close wire tap firmly.

Plug correct wire into the wire tap as indicated above.

8. Plug head lamp switch connector into your new OEM-Style head lamp/ fog light switch.
9. Re-install the head lamp switch panel into the dash.

Final Installation:

1. Re-connect the negative battery cable to the car battery. Remember to re-tighten the bolt.
2. Double check everything to make sure it was connected properly. Now insert the key and turn it to the "ON" position. Test the switch to make sure the lights turn ON and OFF. If the lights do not power on, visit the trouble shooting section below. Otherwise proceed to the next step.
3. Using the supplied zip ties, secure the kits wiring in the engine bay and passenger compartment. Make sure wiring in passenger compartment will not interfere with pedals. Also make sure that the wiring in engine bay is secure enough so that it will not move or rattle.
4. Adjust the lights. This is best done at night or in a garage where there is less light. Turn the lights on and position the car about 10 feet from the wall. On each fog light there is a small knob that can be turned in either direction to move the bulb up or down. Adjust both bulbs so that they are oriented the same way.
5. Re-install the radiator cover with 6 retaining pins you set aside earlier in the installation.
6. Enjoy your new fog lights!

Trouble shooting guide:

Fog lights won't turn on –

- Check the ground cable you connected under the “Wiring in engine bay” section. Make sure that it is making proper contact and that the bolt is tightened.
- Check the ring terminal you connected to the side of the fuse box to +12v power. Make sure that it is making proper contact and that the bolt is tightened.
- Check the blue fuse installed in the fuse holder (small black box located on orange wire). Make sure it is plugged in completely and has not been blown (On a blown fuse the filament in the middle of the two posts has been broken).
- Check to make sure you connected the red/ blue wires to the proper fuse taps as instructed above.

Fog light indicator light (on switch panel) doesn't come on when I turn the fog lights on –

- Check to make sure you installed the wire tap on the proper wire as indicated above. Also make sure the wire tap cover is closed completely.
- Check to make sure the tan fuse installed in the second fuse holder (connected to red wires) is installed properly and has not been blown (On a blown fuse the filament in the middle of the two posts has been broken).

When I turn the fog lights on and off I hear a “click” in the engine bay –

- This is normal. The black relay clicks when the lights turn on and off.

My car is missing some of the wiring mentioned above –

- Does your cars' wiring harness appear to be missing the Orange wire with Light Green stripe as well as the Violet wire with Orange stripe? In some rare cases, 2005 Mustangs came from the factory without this wiring. If you believe you have this problem, please see page 5 for additional instructions.

If you are still having trouble with your product, please contact us for technical assistance. Tech support is available via phone Monday through Friday 9am-5pm. Email tech support is available during regular business hours as well as weekends, holidays, and evenings.

Starkey Products, Inc.

Phone: (386) 951-6335

Email: Tech@Starkey-Products.com

Website: www.Starkey-Products.com

Limited Warranty:

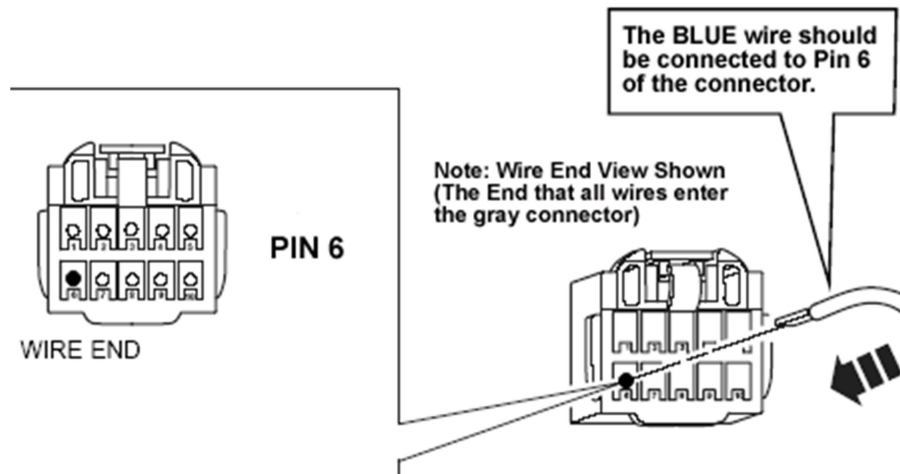
This warranty covers defects in materials or workmanship in any component sold by Starkey Products, Inc. or its authorized dealers. Warranty is effective for five years from the date of purchase. Coverage terminates if you sell or transfer ownership of the product. Starkey Products will repair or replace the defective or malfunctioning product or any defective or malfunctioning part thereof at no charge. This warranty covers parts and labor only. This warranty does not cover any problem that is caused by abuse, misuse, acts of God, or improper installation. Any modification or alteration to any component will void the product warranty. Warranty does not cover wear that any components receive through the normal course of operation and use (including but not limited to bulbs). All warranty claims require proof of purchase.

Supplemental Instructions for 2005 Mustang's

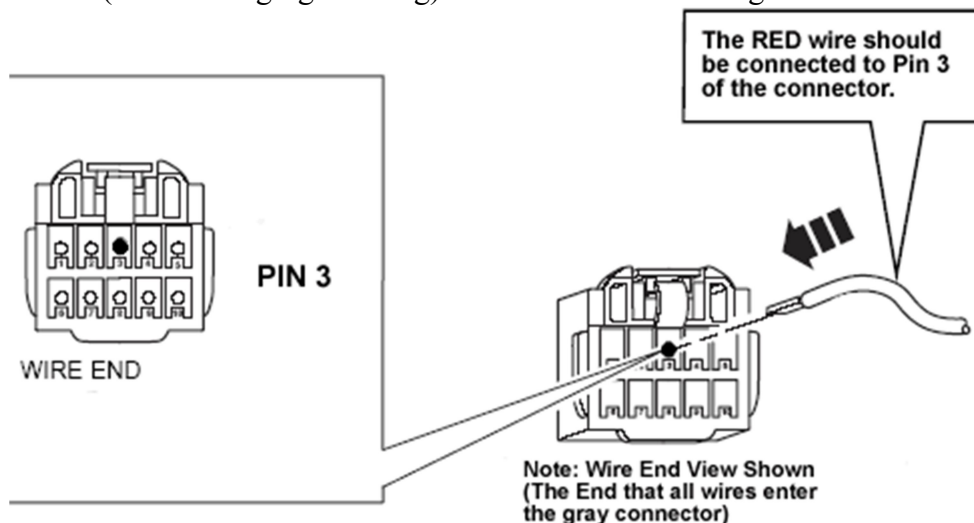
Some 2005 Mustangs came from the factory without certain wiring. This instruction manual and supplemental wiring kit will allow you to connect your Starkey Products fog light wiring kit normally.

Follow the instruction manual above normally. If you find that you do not have the fog light wiring specified, follow the instructions below to finish your installation.

1. Two wiring leads were included in the parts bag. These wiring leads plug into the blue and red wire of the main fog light wiring harness (the two wires that were routed into the passenger compartment).
2. The other ends of the two black wiring leads will plug into your **gray** head light switch connector.
3. Below is a diagram showing how to connect the first wire. Plug the black wire connected to the **blue** wire (from the fog light wiring) into Pin 6 of the head light switch connector.



4. Below is a diagram showing how to connect the second wire. Plug the black wire connected to the **red** wire (from the fog light wiring) into Pin 3 of the head light switch connector.



5. Plug head lamp switch connector into your new OEM head lamp/ fog light switch. Re-install the head lamp switch panel into the dash. Complete 'Final Installation' steps included in main installation manual.