

UNLEASH YOUR SPEED

INSTRUCTIONS FOR
REMOVING SPEED LIMITS



FOR MODELS:

M10, M10-PRO & M11



[PLEASE COMPLY WITH LOCAL REGULATIONS]



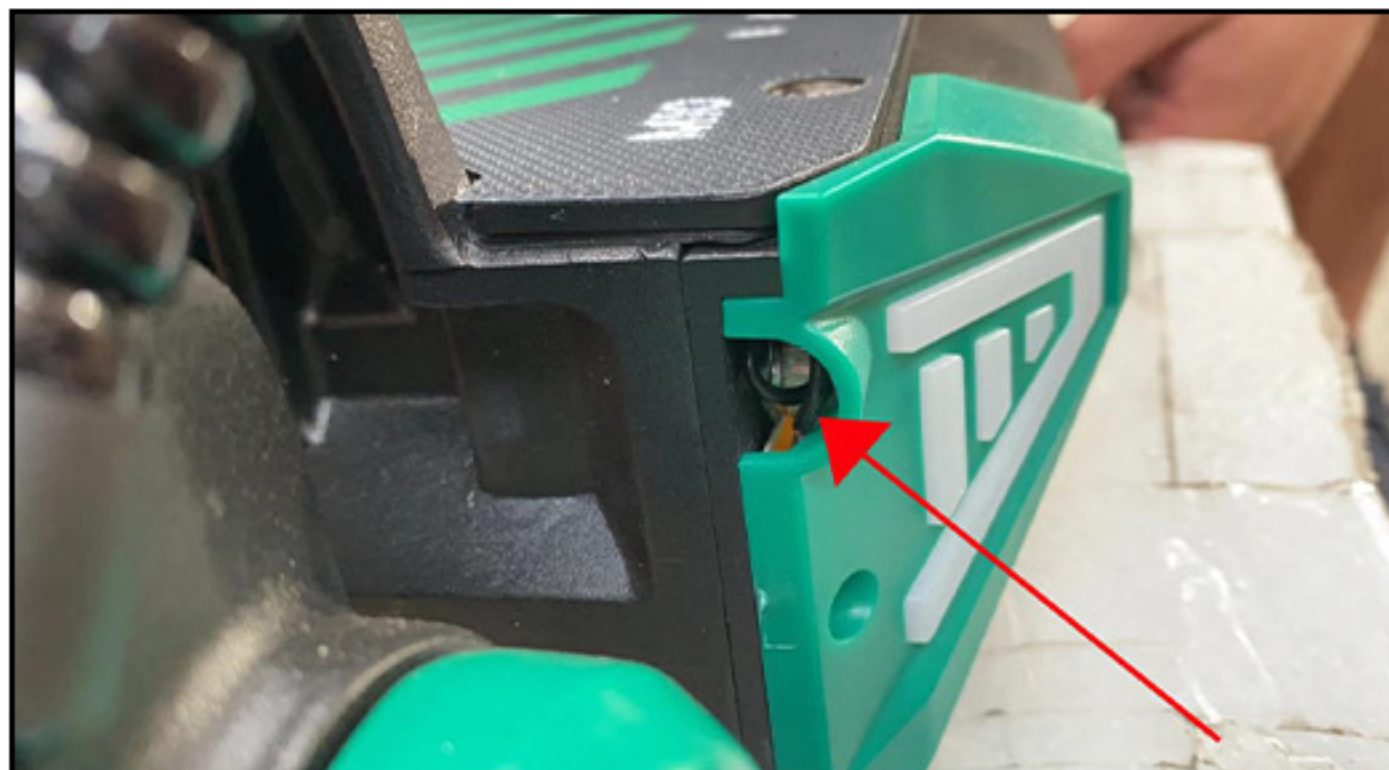
ARVALA
ELECTRIC SCOOTER

MODEL: M10

M10 SCOOTER SPEED LIMIT REMOVAL INSTRUCTION

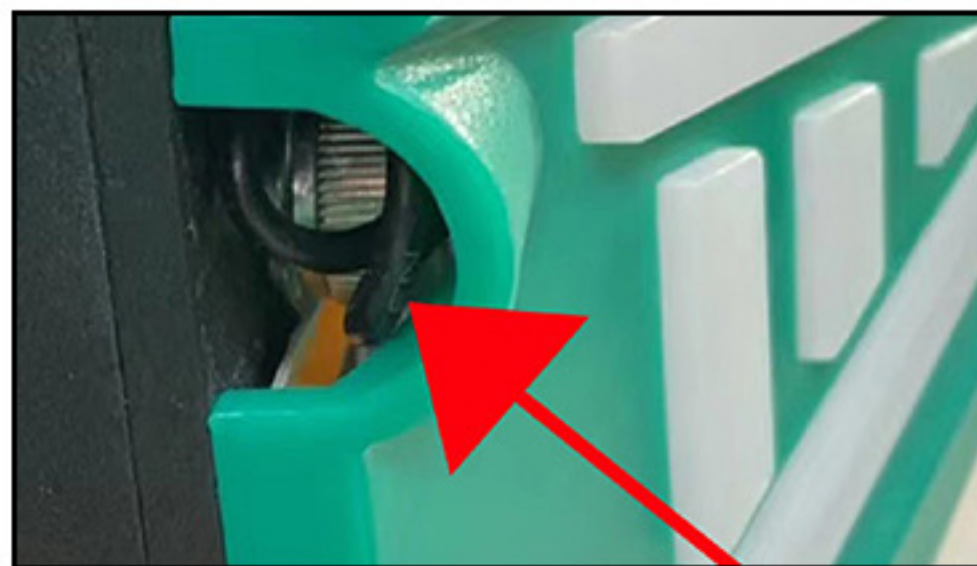
STEP 1.

On the left or right front side of the deck, near the indicator light housing, there is a black wire. It may be tucked inside or hanging outside.



STEP 2.

Pull the black wire out if it's inside, or locate it if it's already outside.



STEP 3.

Simply cut the black wire.

UPON COMPLETING THE ABOVE THREE STEPS, YOU WILL HAVE SUCCESSFULLY REMOVED THE SPEED LIMIT FOR THE M10.

MODEL: M10-PRO / M11

SPEED LIMIT REMOVAL INSTRUCTION

STEP 1.

Download the "ARVALA" APP via Google Play or the App Store on other devices.

STEP 2.

Launch the ARVALA APP, register a new account, and log in

STEP 3.

Turn on the scooter's dashboard. In the ARVALA interface, search for your scooter's corresponding device name and click to connect.

STEP 4.

Wait for the connection to be successful. The software will automatically redirect you to the homepage.

STEP 5.

Click on the second option in the bottom menu bar labeled "Setting". Then click on "Advanced Settings" and enter the password: 2112.

STEP 6.

Inside the Advanced Settings interface, set the "speed limit" option (the first line) to 100

1. Use an NFC card and place it on the device, being careful to just get close and not stay too long.



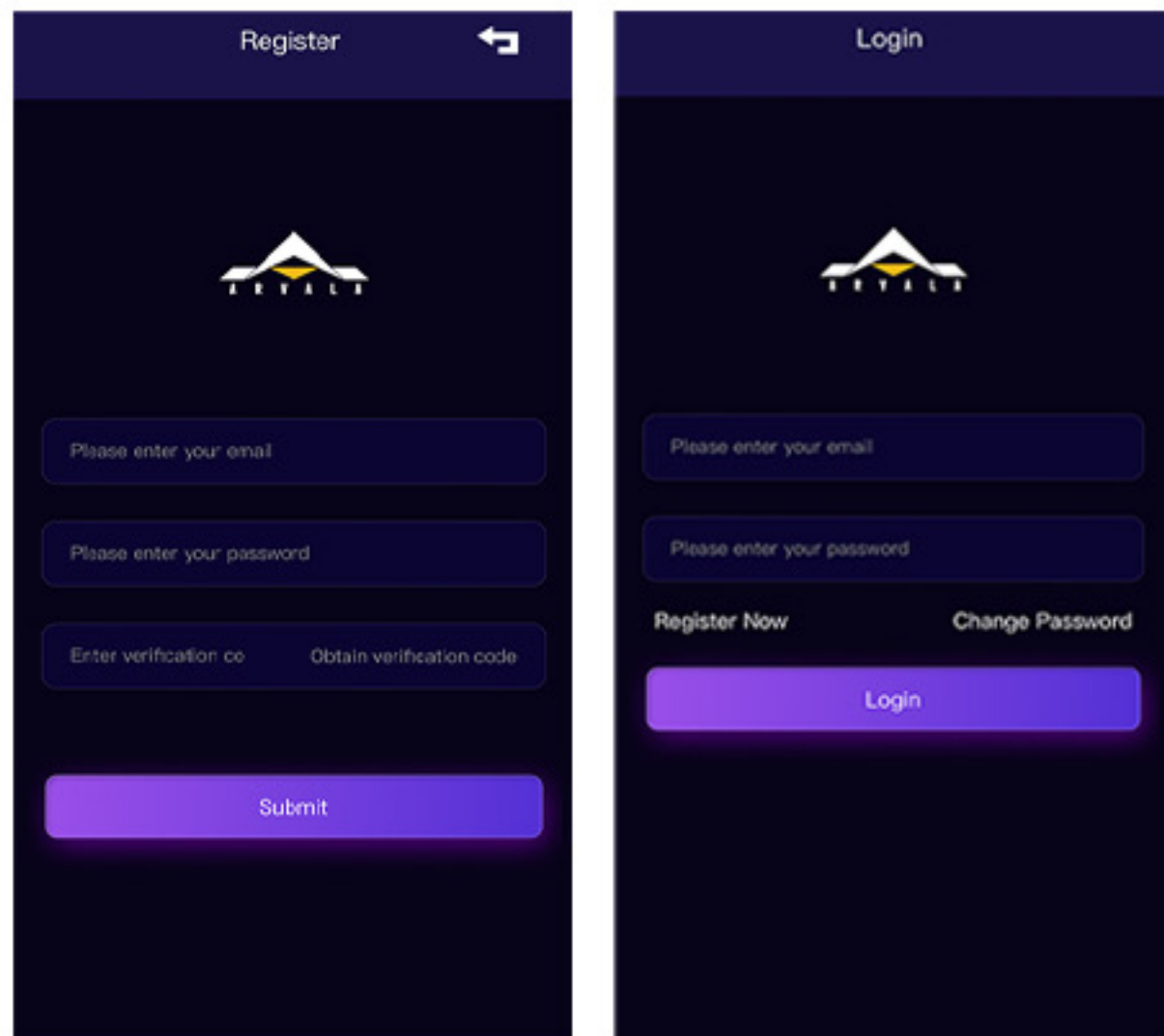
2. Press and hold the on button in red circle, the display screen on



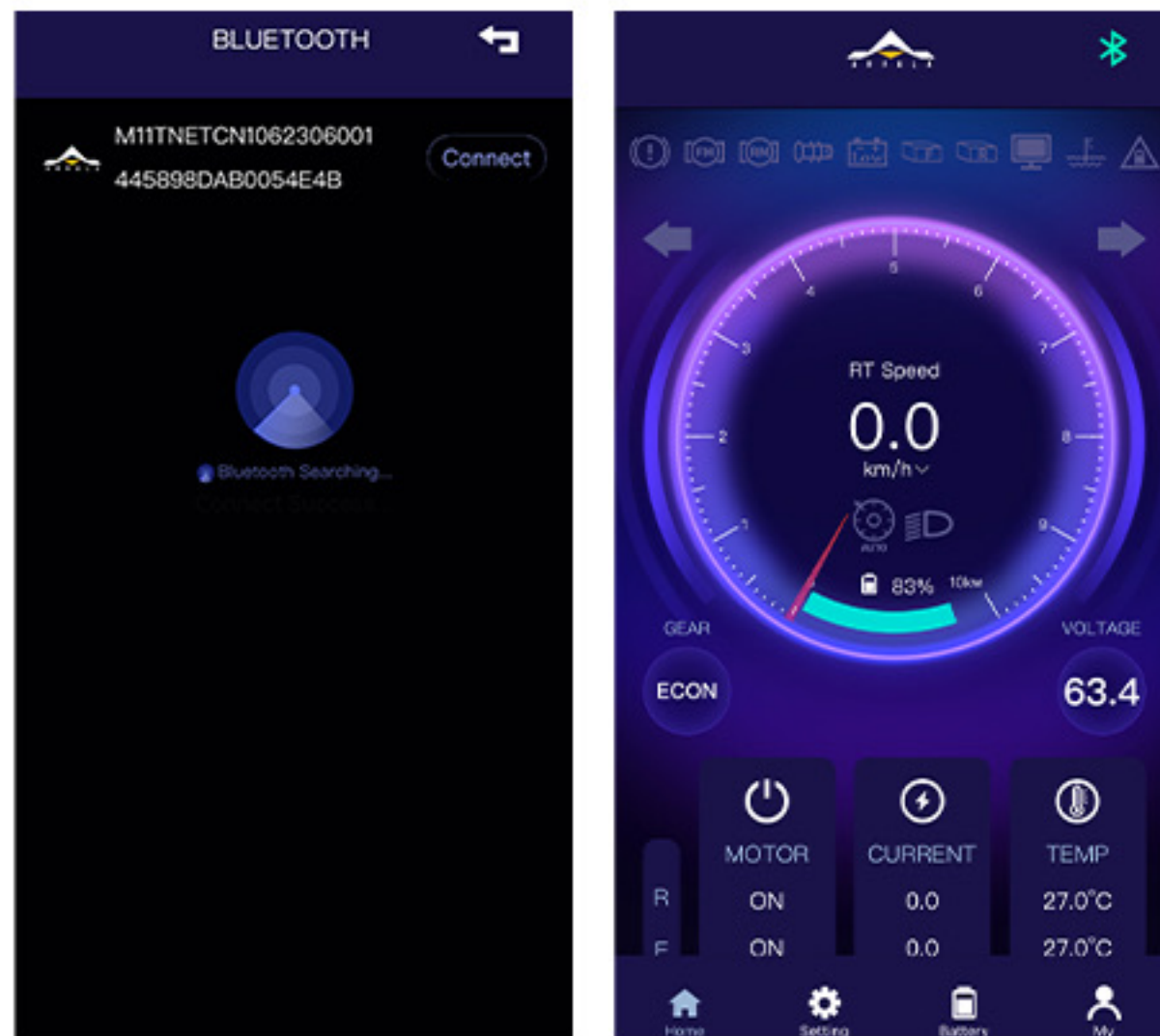
3. Download the "ARVALA" APP via Google Play or the App Store on other devices.



4. Register a new account, and log in

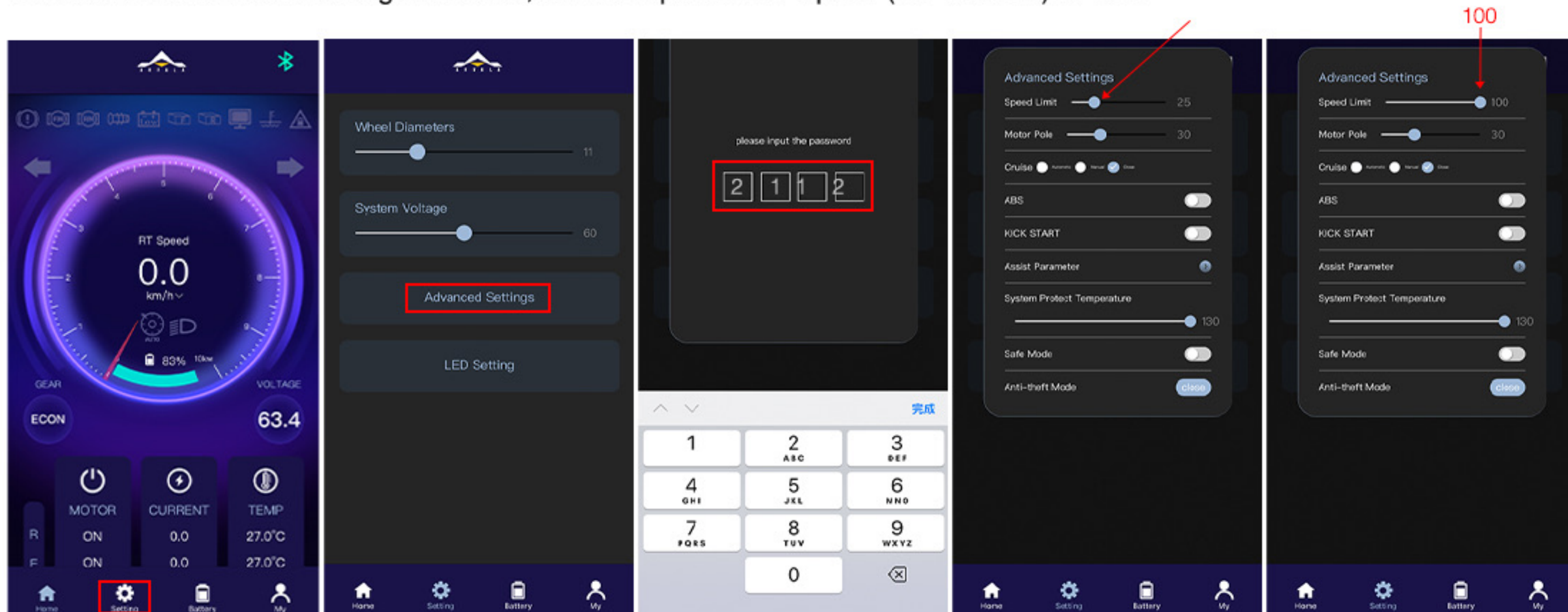


5. Note to check the Bluetooth device starts with M11, click on the connection. Wait for the connection to be successful. The software will automatically redirect you to the homepage.



6. Click on the second option in the bottom menu bar labeled "Setting". Then click on "Advanced Settings" and enter the password: 2112

7. Inside the Advanced Settings interface, set the "speed limit" option (the first line) to 100.



UPON COMPLETING THE ABOVE STEPS, YOU WILL HAVE SUCCESSFULLY REMOVED THE SPEED LIMIT FOR THE M10-PRO OR M11.