



Butterfly Gardening

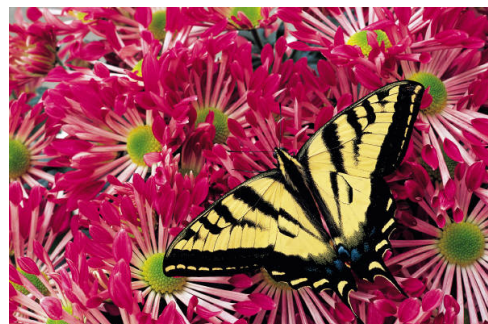
Butterfly gardening can be very easy and it creates a beautiful garden that gives you color all summer long! There are many things to consider before getting started, so here are some tips to help your garden attract butterflies.



Plant your garden in a bright, sunny area. Butterflies are cold-blooded; they need to warm their muscles on boulders or large flat rocks so they can fly. Place a few flat stones around your garden to give them a variety of places to bask in the sun during different times of the day. Choose an area that offers some protection from strong winds. Butterflies won't want to feed in an area where they are constantly fighting the wind to stay on the plants. You can offer them some protection by planting shrubs or small trees; even taller perennials will help.



When selecting plants for your garden, choose plants that will feed the multiple stages of a butterfly's lifecycle. Caterpillars have a limited host range, so research what types of plants are required for the type of butterflies you would like to attract (ex. Monarchs need milkweed; Black Swallowtails need dill or parsley). Since adult butterflies need nectar from a variety of flowers, choose plants with different bloom times so you have a food source available all season. You can start with some perennials such as Salvia, Coneflower, or Butterfly Weed, and then fill in with colorful annuals that will bloom all summer.



Lastly, you will need to reduce or eliminate your use of pesticides, insecticides, and herbicides. Remember that butterflies are an insect and using some of these products can kill the caterpillars, the butterflies, and the plants they feed on. You can still spot treat pests with oils and soaps or, better yet, introduce natural predators such as spiders, lacewings, and ladybird beetles.

Here are some plants to help you get started on your butterfly garden:

Ageratum - Partial Sun to Shade
Begonia - Partial to Full Shade
Bougainvillea - Full to Partial Sun
Cleome - Full Sun
Cosmos - Full to Partial Sun
Dahlia - Full Sun
Dianthus - Partial Sun
Nicotiana - Full to Partial Sun
Fuschia - Partial Shade
Geranium - Full to Partial Sun
Heliotrope - Full to Partial Sun

Impatiens - Partial to Full Shade
Lantana - Full Sun
Lobelia - Partial Sun
Marigolds - Full Sun
Morning Glory - Full Sun
Pentas - Full to Partial Sun
Petunia - Full to Partial Sun
Snapdragon - Full Sun
Sweet Alyssum - Partial Sun to Shade
Verbena - Partial to Full Sun
Zinnia - Full Sun

