

MAYWOOD  STUDIO

SOMMERVILLE QUILT



Sommerville Quilt by Maywood Studio
featuring the Sommersville Collection

65 x 78½

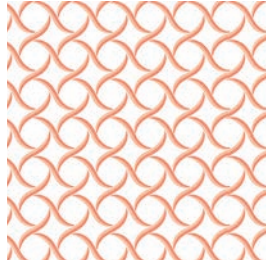
#madewithmaywood
maywoodstudio.com



MAYWOOD STUDIO



Fabric 1
MAS9833-P



Fabric 2
MAS9838-WP



Fabric 3
MAS9832-G



Fabric 4
MAS9834-SW



Fabric 5
MAS9833-PR



Fabric 6
MAS9835-SW



Fabric 7
MAS9835-P



Fabric 8
MAS9835-R



Binding
MAS9835-G



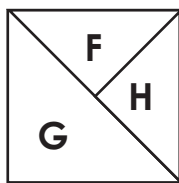
Fabric 9
MAS9831-WG

Fabric Requirements

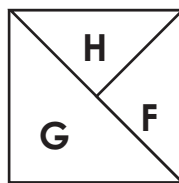
Fabric 1	9833-P	Fat 8th or 9" x 21"
Fabric 2	9838-WP	Fat 8th or 9" x 21"
Fabric 3	9832-G	Fat 8th or 9" x 21"
Fabric 4	9834-SW	Fat 8th or 9" x 21"
Fabric 5	9833-PR	Fat 8th or 9" x 21"
Fabric 6	9835-SW	2-1/4 yards
Fabric 7	9835-P	5/8 yard
Fabric 8	9835-R	1/3 yard
Fabric 9	9831-WG	3 yards
Binding	9835-G	5/8 yard
Backing	your choice	5 yards



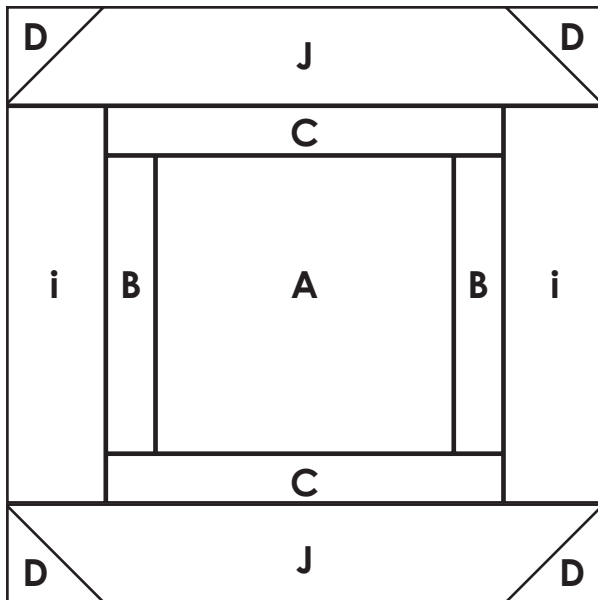
4 total
4" x 4"
(3-1/2" finished)



28 total
4" x 4"
(3-1/2" finished)



28 total
4" x 4"
(3-1/2" finished)



Make 12
12-1/2" x 12-1/2"
(12 x 12 finished)

WOF - Width of Fabric
LOF - Length of Fabric
RST - Right Sides Together
HST - Half Square Triangle

Cutting

Finished Quilt Size 65" x 78 1/2"

Fabrics 1, 2, 5 **A:** From each fat eight cut:
(2) 6-1/2" squares

Fabrics 3, 4 **A:** From each fat eight cut:
(3) 6-1/2" square

Fabric 6

Cut (10) 1-1/2" x WOF Strips

Subcut into

B: (24) 1-1/2" x 6-1/2" rectangles

C: (24) 1-1/2" x 8-1/2" rectangles

Cut (3) 2-1/2" x WOF Strips

D: Subcut into (48) 2-1/2" squares

Cut (2) 5" x WOF Strips

Subcut into (16) 5" squares

From 2 squares

E: Cut in half on the diagonal once
for a total of 4 triangles.

From 14 squares

F: Cut in quarters on the diagonal for a
total of 56 triangles.

Sashing: Cut (11) 2" x WOF Strips

From 3 strips : subcut (8) 2" x 12-1/2" strips

Cut 3 strips into 2" x 39-1/2" pieces

Cut 2 strips into 2" x 42-1/2" pieces

Sew the remaining 3 strips together, end
to end into one continuous strip..

Middle Border: Cut (6) 2-1/2" x WOF Strips

Fabric 7

Cut (4) 4-1/2" x WOF strips

Subcut into (30) 4-1/2" squares

G: Cut in half on the diagonal once
for a total of 60 triangles

Fabric 8

Cut (2) 5" x WOF strips

Subcut into (14) 5" squares

H: Cut in quarters on the diagonal for
a total of 56 triangles

Fabric 9

1st: From the **white border stripe** section

Cut (4) 6-1/2" x LOF strips

2nd: From the **green border stripe** section cut

I: (24) 2-1/2" x 8-1/2" rectangles

J: (24) 2-1/2" x 12-1/2" rectangles

Binding

Cut (8) 2-1/2" x WOF strips

Sommerville Quilt by Maywood Studio

Please read all instructions before you begin. Seam allowance is 1/4" unless otherwise stated. Use a light sizing/starch on the squares before cutting triangles to help control stretching along the bias edges.

Make the Blocks

1. Sew a Fabric 6-B rectangle to the side of a Fabric 4 -A square. Repeat on the opposite side. Press away from center.

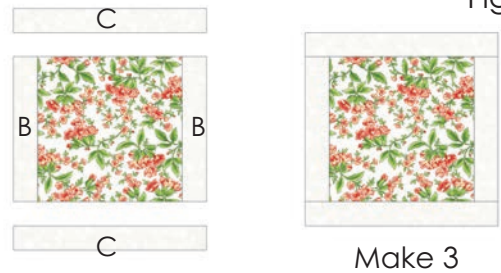


Fig. 1

2. Sew a Fabric 6 -C rectangle to the top and bottom of the Step 1 unit. Press away from center. Make 3. Fig 1.

3. Mark a diagonal line from corner to corner on two D squares.

4. Place one D square over one side of a J rectangle, right sides together. Sew on the marked line. Cut 1/4" away from the stitched line. Press toward the D square. Repeat on the opposite side. Make 24.

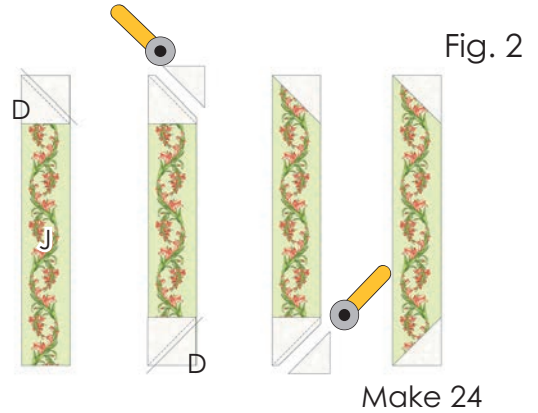


Fig. 2

5. Sew a Fabric 9-I rectangle to opposite sides of the Step 2 unit. Press away from center.

6. Sew the D-J-D unit to the top and the bottom of the step 5 unit. Press toward center. Make 3. Fig 3



Fig. 3

12-1/2" x 12-1/2"
Make 3

7. Repeat steps 1-6 to make the following blocks:



Center Quilt Top Diagram



8. Make the quilt center: lay the blocks out as illustrated above. Sew the 2-1/2" x 12-1/2" Fabric 6 sashing strips to the sides of the first two blocks in each row. Press toward the sashing. Sew the blocks into 4 rows of three blocks.

9. Sew the (3) 2" x 39-1/2" Fabric 6 sashing strips between the rows. Press toward the sashing.

10. Side sashing: measure the length of the quilt through the center.:_____. Sew (3) 2" x WOF Fabric 6 strips together, end to end, into one continuous piece. Trim two sashing strips to this measurement. Sew to opposite sides of the quilt center. Press toward the sashing.

11. Sew the 2" x 42-1/2" Fabric 6 strips to the top and bottom of the quilt center. Press toward the sashing.

Ribbon Borders

12. Select (2) 5" Fabric 6-E and (2) Fabric 7-G squares. Cut in half once on the diagonal. Fig 4.

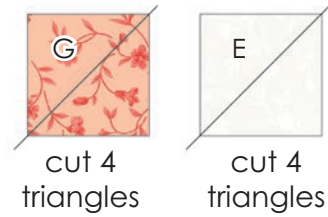


Fig. 4

13. Sew the Fabric 6-E triangles to a Fabric 7-G triangles. Trim to 4" square. Make 4. Fig. 5

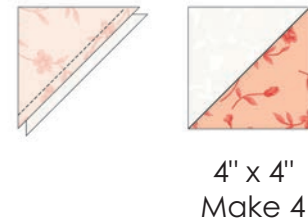


Fig. 5

14. Select the (14) Fabric 6-F and (14) Fabric 8-H squares. Cut into quarters. Fig. 6

15. Sew the F triangles to the H triangles as illustrated below: make sure to make mirror image sets.

14. Sew the F-H sets to the remaining G triangles. Make 28 of each unit for a total of 56.

Fig. 6

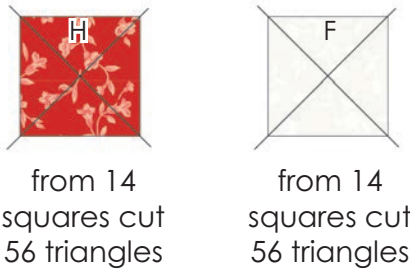


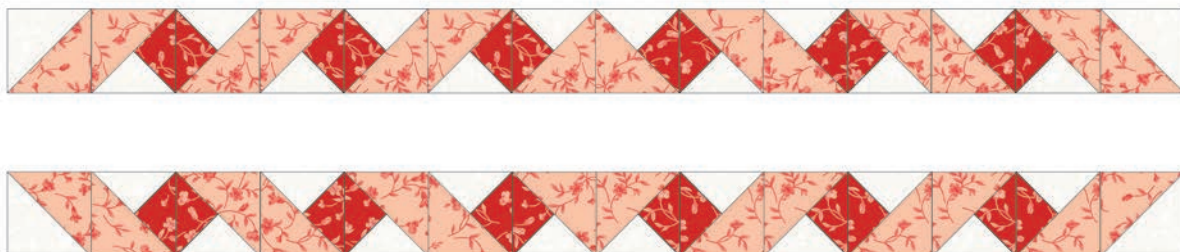
Fig. 7



15. Side ribbon borders: Lay the units out into two rows of 16 units each in the direction illustrated below. Press seams open. Sew to opposite sides of the center quilt top following the illustration on p. 7. Press away from the ribbon borders.



16. Top and bottom ribbon borders: Lay the units out into two rows of 6 units each, with a step 13 Half Square Triangle units at each end. Follow the illustration below. Press seams open. Sew to the top and bottom of the center quilt top following the illustration on p.7. Press away from the ribbon borders.



17. Sew (6) Fabric 6 middle border strips together, end to end, into one continuous strip.

Measure the length of the quilt through the middle:_____. Cut 2 sashing strips to this measurement. Sew these sashing strips to each side of the ribbon borders. Press toward sashing.

Measure the width of the quilt through the middle:_____. Cut 2 sashing strips to this measurement. Sew these sashing strips to the top and bottom of the ribbon borders. Press toward the sashing.



18. Gather the (4) Fabric 9 LOF 6-1/2" border strips.

Measure the length of the quilt through the middle:_____. Trim 2 border strips to this measurement. Sew these border strips to each side of the quilt top. Press away from center.

Measure the width of the quilt through the middle:_____. Trim 2 border strips to this measurement. Sew these border strips to the top and bottom of the quilt top. Press away from center.

19. Layer the backing (wrong side up), batting and quilt top (right side up). Baste layers to secure. Quilt as desired. Trim the excess backing and batting.

For optional angled corners: Draw a 45 degree angle on the corners of the quilt top with a disappearing marking tool, such as a hera marker or special pen. Trim 1/4" away from the marked line.

20. Sew the binding strips together into one continuous strip. Press in half length-wise. Sew the binding to the quilt top with a 3/8" seam allowance, mitering the corners. Turn the binding to the back side of the quilt and stitch down by hand with matching thread.

Quilt Planning Diagram

