

A NEW SHERIFF IN TOWN

SIZE: 52 1/2" W X 52 1/2" H • LEVEL: BEGINNER • PATTERN BY: NATALIE CRABTREE • COUNTRY RODEO COLLECTION
PATTERN AVAILABLE ON: WWW.MICHAELMILLERFABRICS.COM



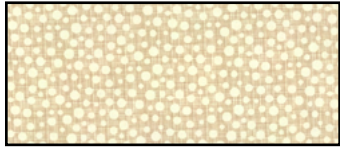
THIS IS A DIGITAL REPRESENTATION OF THE QUILT TOP, FABRIC MAY VARY.

PLEASE NOTE: BEFORE BEGINNING YOUR PROJECT, CHECK FOR ANY PATTERN UPDATES AT MICHAELMILLERFABRICS.COM'S FREE PROJECTS SECTION.

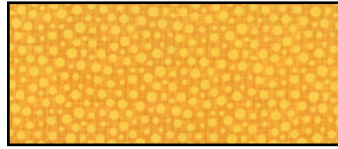
p.212.704.0774 | info@michaelmillerfabrics.com | www.michaelmillerfabrics.com



A NEW SHERIFF IN TOWN



FABRIC A
Hash Dot
CX6699 Linen
1 5/8 yards



FABRIC B
Hash Dot
CX6699 Mustard
3/4 yard



FABRIC C
CX9465
Rodeo Ranch Navy
1/2 yard



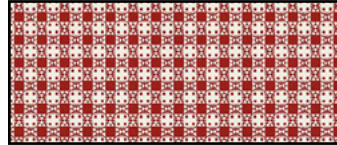
FABRIC D
CX9464
Hoof It Brown
3/4 yard



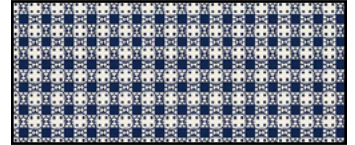
FABRIC E
CX9463
Golden Horseshoes Red
1 yard



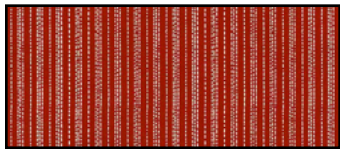
FABRIC F
CX9461
Tossed Bandana Navy
1 3/8 yard (includes binding)



FABRIC G
CX9460
Hokey Pokey Red
1/4 yard



FABRIC H
CX9460
Hokey Pokey Navy
1/4 yard



FABRIC I
CX9462
Wrangler Stripe Red
1/4 yard



A NEW SHERIFF IN TOWN

Additional supplies needed:

Backing: 3 ½ yards giving you 4" additional inches on each side

Batting: 60 ½" square piece of batting giving you 4 inches overage on each side

Additional Supplies Needed: Basic Sewing Supplies, Fusible Web of your choice for applique

FUSIBLE WEB CUTTING INTRUCTIONS

- On the smooth side of fusible web trace (13) Large Circle Templates, (13) Medium Circle Templates, (65) Small Circle Templates and (13) Star Templates. Roughly cut out each template just outside of the traced line and set aside. **(Please note: Instructions included in this pattern are for raw edge applique, therefore templates do not include a seam allowance. If you wish to complete turn under applique, simply add a ¼" around all edges of each template. Proceed with your preferred applique method.)**

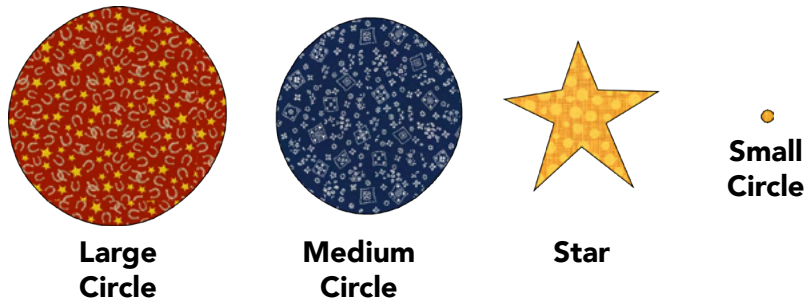
KEY	FABRIC CUTTING INTRUCTIONS
A	<ul style="list-style-type: none"> • Cut (4) 9 ½" x WOF strips. Subcut (13) 9 ½" squares for Block A. • Cut (8) 2" x WOF strips. Subcut (48) 2" x 6 ½" rectangles for Block B.
B	<ul style="list-style-type: none"> • Fuse (13) Star Fusible Templates and (65) Small Circle Fusible Templates on the wrong side of fabric. Cut out each Applique Piece on the traced line and set aside for Block A assembly.
C	<ul style="list-style-type: none"> • Fussy cut (12) 4 ½" x 6 ½" panel images from yardage for Block B.
D	<ul style="list-style-type: none"> • Cut (6) 3 ½" x WOF strips. Piece for length using diagonal seams. From the long strip subcut the following: <ul style="list-style-type: none"> o (2) 3 ½" x 47" strips for Side Border 2. o (2) 3 ½" x 53" strips for Top/Bottom Border 2.
E	<ul style="list-style-type: none"> • Fuse (13) Large Circle Fusible Templates on the wrong side of fabric. Cut out each Applique Piece on the traced line and set aside for Block A assembly.
F	<ul style="list-style-type: none"> • Cut (6) 2 ¼" x WOF strips for binding. • Cut (F) 1 ¼" x WOF strips. Piece strips for length using diagonal seams. From the long strip subcut the following: <ul style="list-style-type: none"> o (2) 1 ¼" x 45 ½" strips for Side Border 1. o (2) 1 ¼" x 47" strips for Top/Bottom Border 1. • Use the remaining yardage to fuse (13) Medium Circle Fusible Templates on the wrong side of fabric. Cut out each Applique Piece on the traced line and set aside for Block A assembly.
G	<ul style="list-style-type: none"> • Cut (2) 2" x WOF strips. Subcut (24) 2" squares for Block B.
H	<ul style="list-style-type: none"> • Cut (2) 2" x WOF strips. Subcut (24) 2" squares for Block B.
I	<ul style="list-style-type: none"> • Cut (4) 1 ½" x WOF strips. Subcut (24) 1 ½" x 6 ½" rectangles for Block B.

A NEW SHERIFF IN TOWN

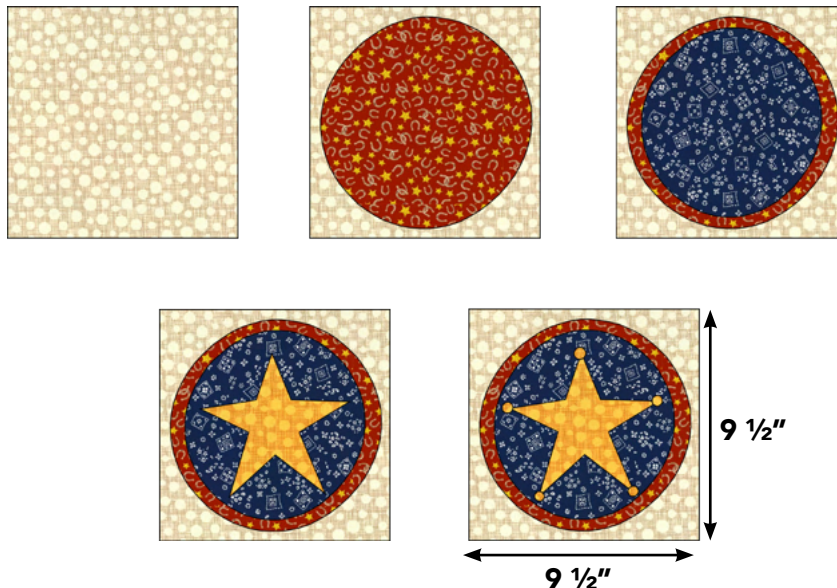
Piecing Instructions

Block A:

1. Begin Block A assembly by removing the paper from the glue side of each Large, Medium and Small Circle Applique Piece (*Fabrics B, E, and F*) and each Star Applique Piece (*Fabric B*).



2. Begin layering the Applique Pieces onto (13) Fabric A $9\frac{1}{2}$ " squares using the order listed below and the diagrams for reference. It is recommended to layer all Applique Pieces before fusing to ensure you are satisfied with the placement of each piece. Please note that the Small Circle Applique Pieces will cover each star point slightly.
 - a. First, place Fabric E Large Circle Applique Pieces centering them onto the Fabric A square.
 - b. Second, place Fabric F Medium Circle Applique Pieces centering them onto the Large Circles.
 - c. Third, place Fabric B Star Applique Pieces centering them onto the Medium Circles.
 - d. Last, place Fabric B Small Circle Applique Pieces overlapping the Star Points slightly.



3. Once you are satisfied with the placement of each applique, fuse in place thoroughly.
4. Stitch around each individual applique piece using a decorative stitch and thread color of your choice.
5. Snip threads and press for a nice finish.
6. Repeat to create (13) Block A measuring $9\frac{1}{2}$ " x $9\frac{1}{2}$ " unfinished.

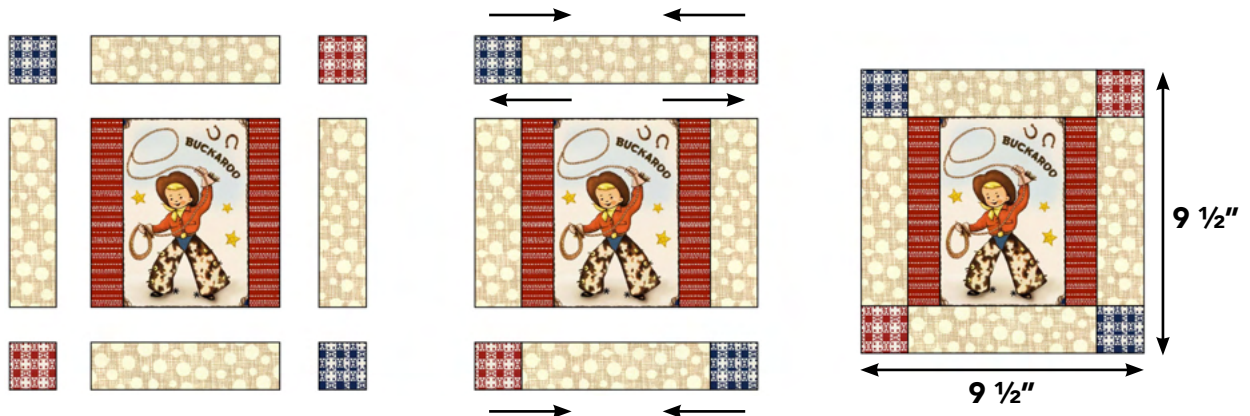
A NEW SHERIFF IN TOWN

Block B:

7. Sew (1) Fabric I 1 1/2" x 6 1/2" rectangle to either side of (1) Fabric C 4 1/2" x 6 1/2" panel image as shown. Press outward toward Fabric I.
8. Repeat to sew (24) Fabric I rectangles onto (12) panel images. Blocks will measure 6 1/2" x 6 1/2" unfinished at this step.



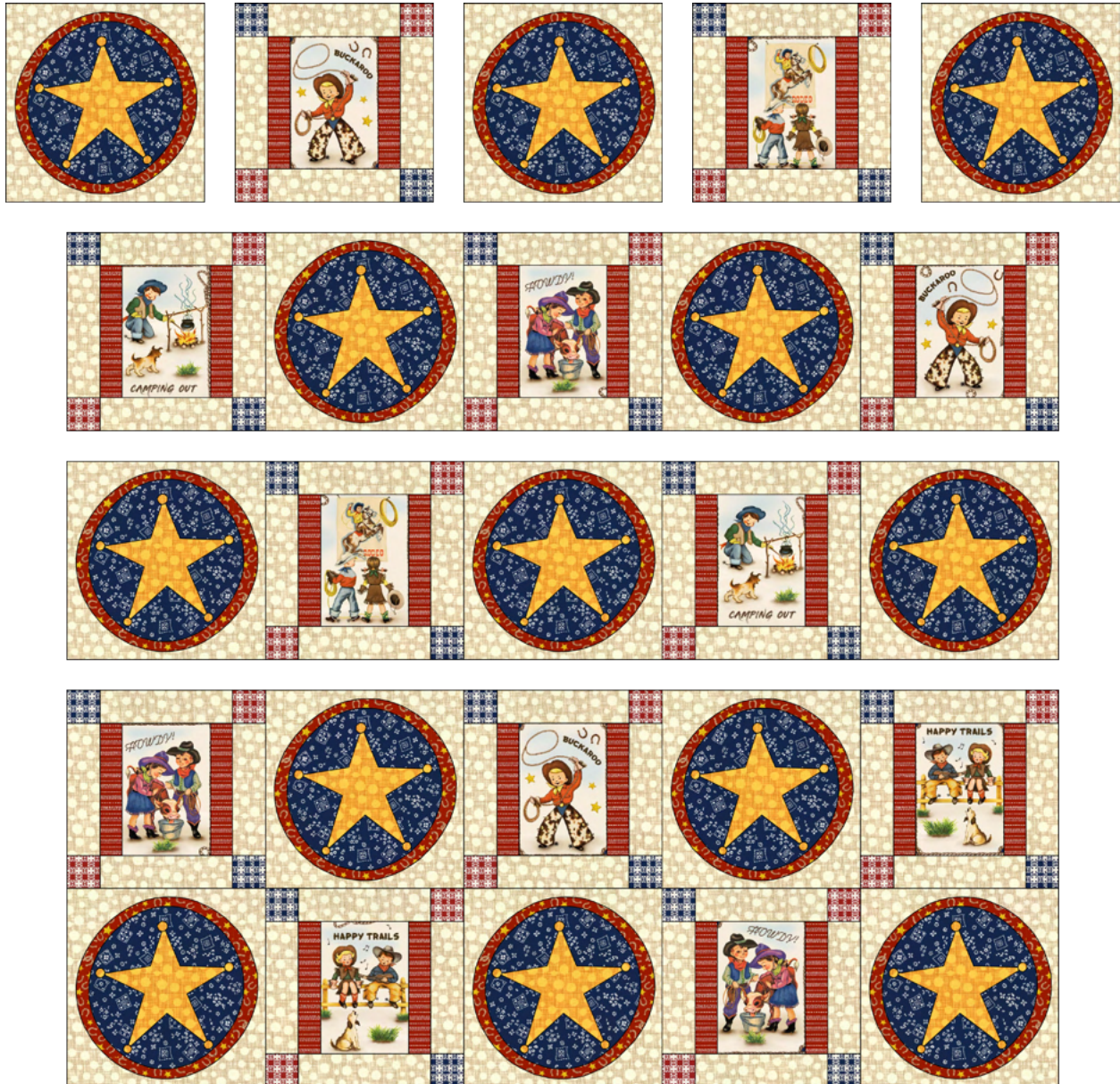
9. Lay out (2) 2" squares from Fabrics G and H, (4) Fabric A 2" x 6 1/2" rectangles and the Block B unit created in the above steps as shown. Ensure that Fabric G squares are placed in opposite corners of the block, and Fabric H squares are placed in opposite corners of the block.
10. Begin sewing Block B together, pressing all seams toward the Fabric A rectangles.
11. Repeat to create (12) Block B. Block B should measure 9 1/2" x 9 1/2" unfinished.



Quilt Assembly

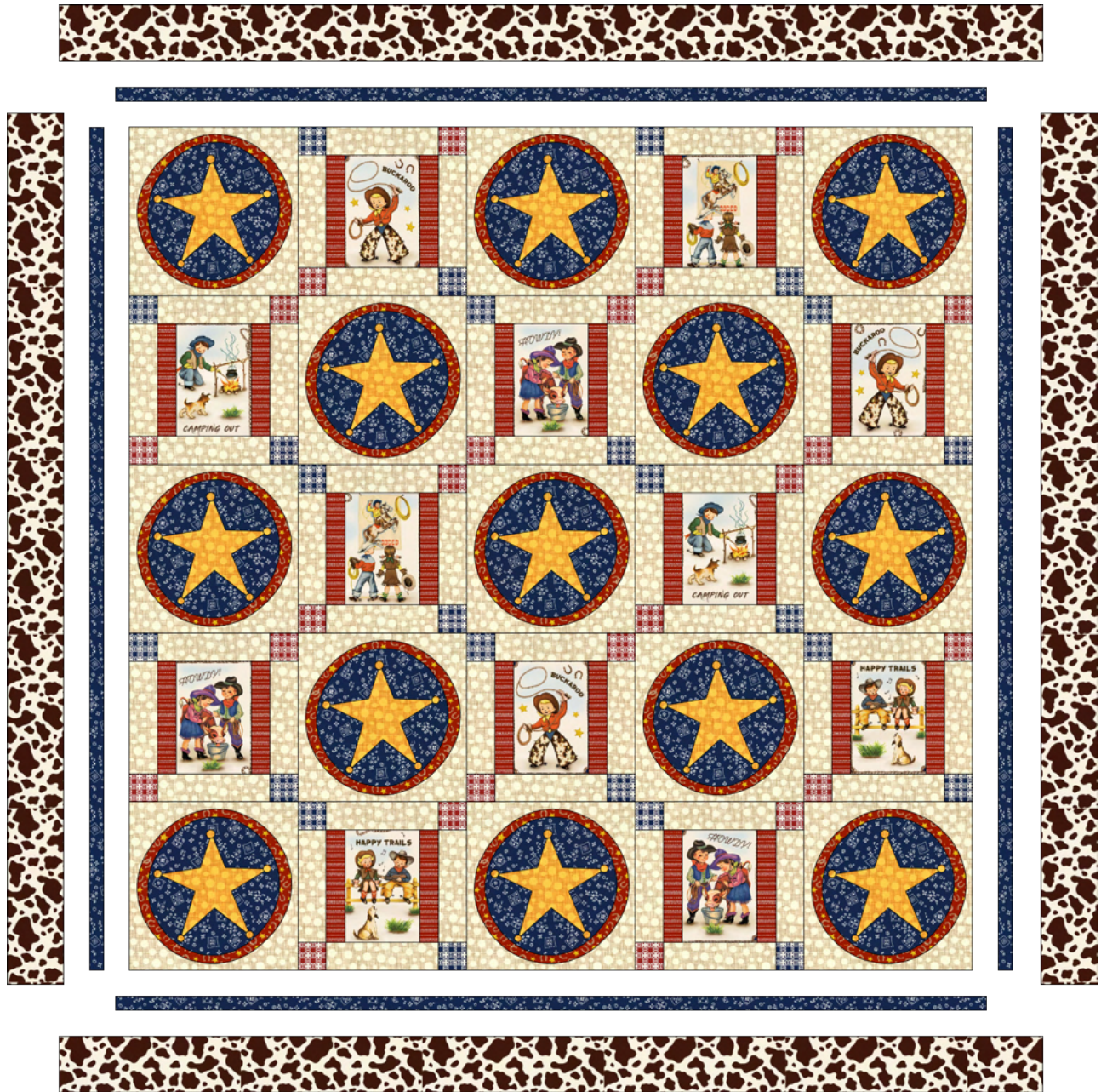
12. Lay out (13) Block A and (12) Block B in a 5 x 5 grid as shown. Alternate between Blocks A and B so that odd numbered rows begin and end with Block A, and even numbered rows begin and end with Block B.
13. Sew the quilt together in horizontal rows, pressing seams to Block B.
14. Sew the horizontal rows together to complete the quilt top center. Press. Quilt top center should measure 45 1/2" x 45 1/2" unfinished.

A NEW SHERIFF IN TOWN



15. Attach the Fabric F Side Border 1 strips measuring $1 \frac{1}{4}''$ x $45 \frac{1}{2}''$ to either side of the quilt top center. Press outward.
16. Attach the Fabric F Top/Bottom Border 1 strips measuring $1 \frac{1}{4}''$ x $47''$ to the top and bottom of the quilt top center. Press outward.
17. Attach the Fabric D Side Border 2 strips measuring $3 \frac{1}{2}''$ x $47''$ to either side of the quilt top. Press outward.
18. Attach the Fabric D Top/Bottom Border 2 strips measuring $3 \frac{1}{2}''$ x $53''$ to the top and bottom of the quilt top. Press outward to complete the quilt.

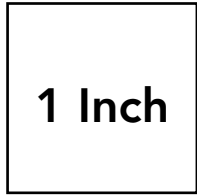
A NEW SHERIFF IN TOWN

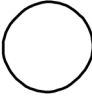


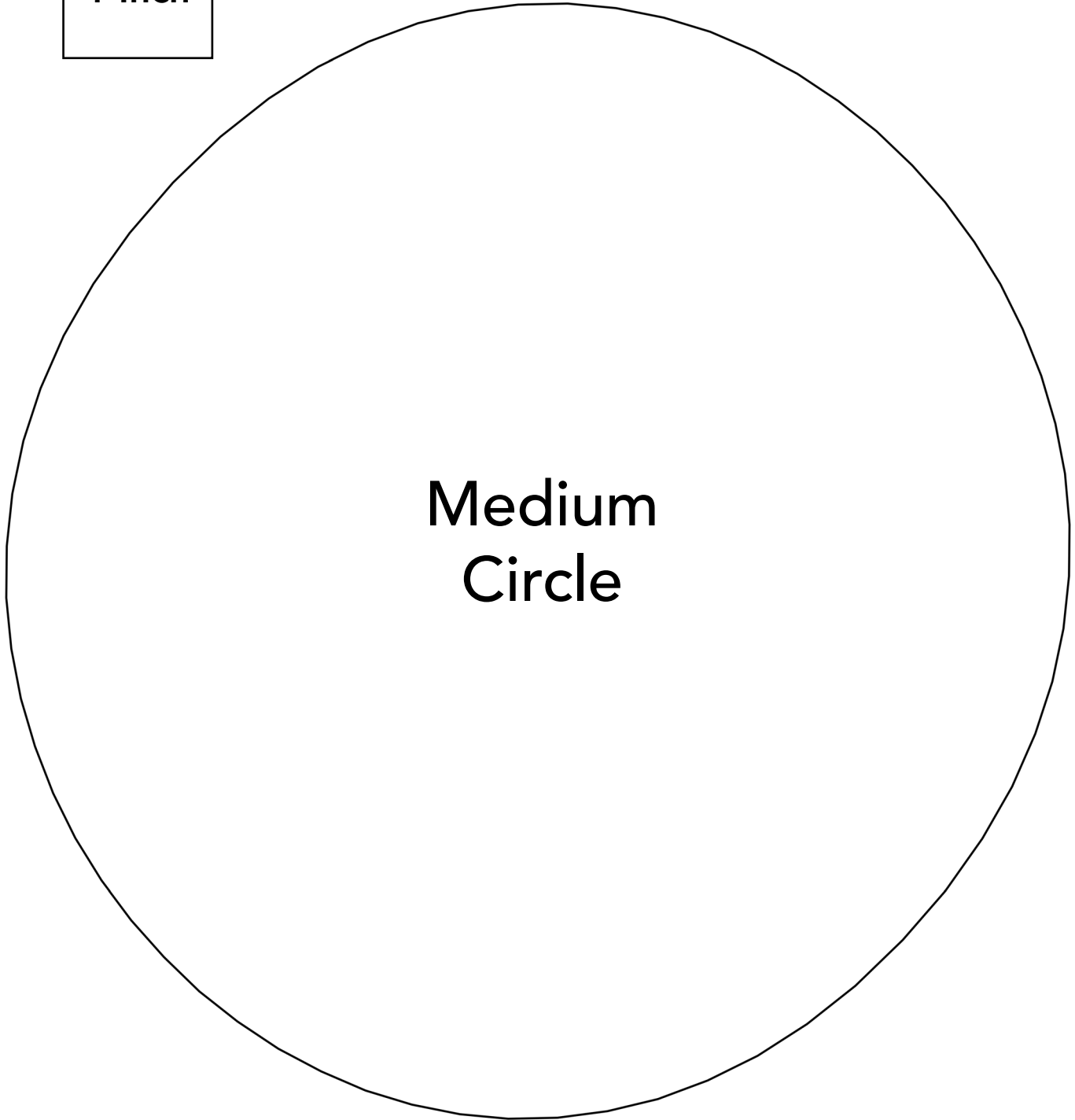
19. Sandwich quilt with batting and backing. Baste quilt layers together using your preferred method.
20. Quilt as desired.
21. Bind quilt using (6) Fabric F 2 1/4" x WOF strips.



A NEW SHERIFF IN TOWN

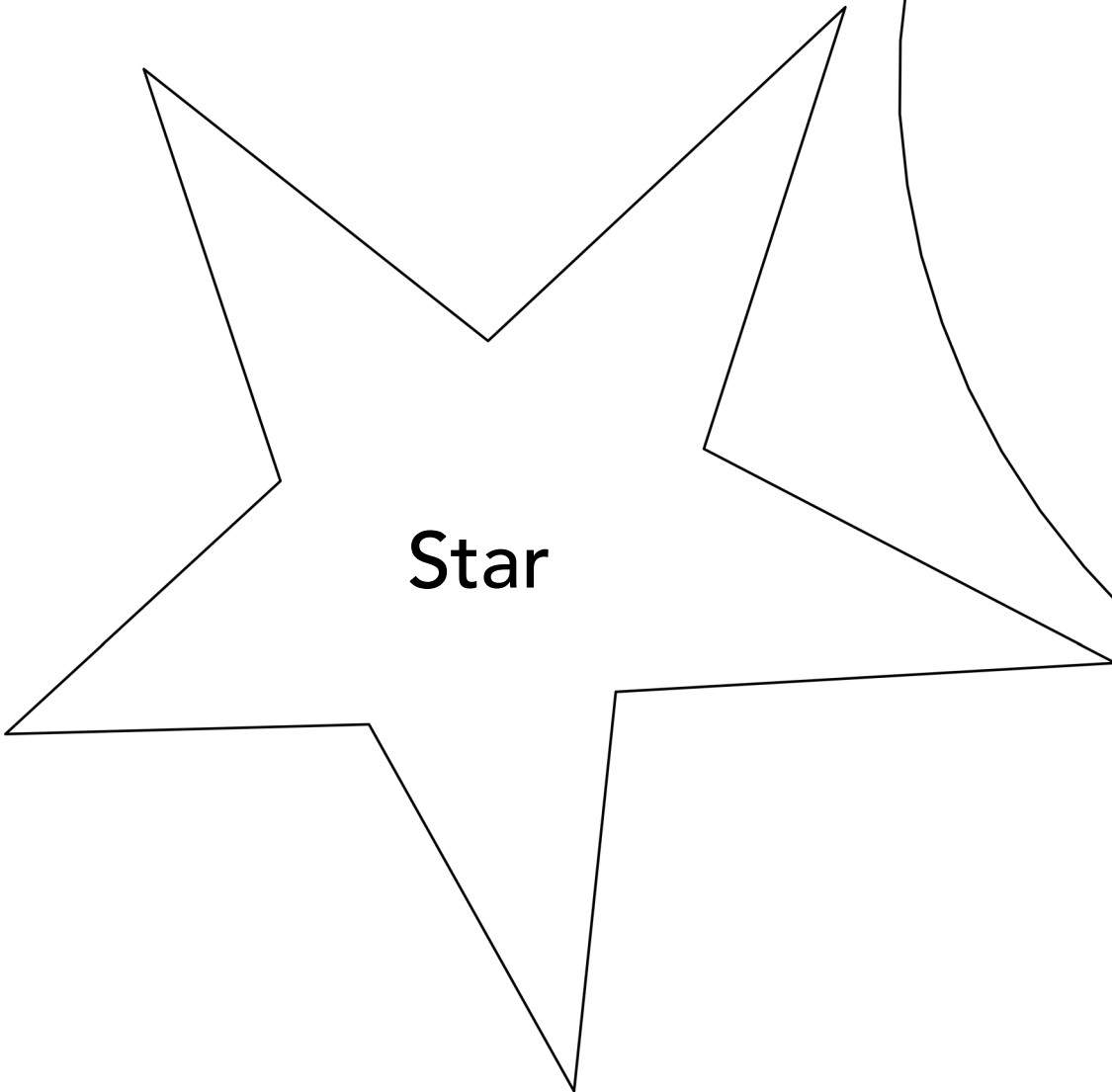
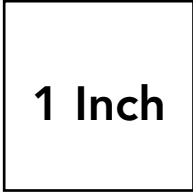


Small
Circle 

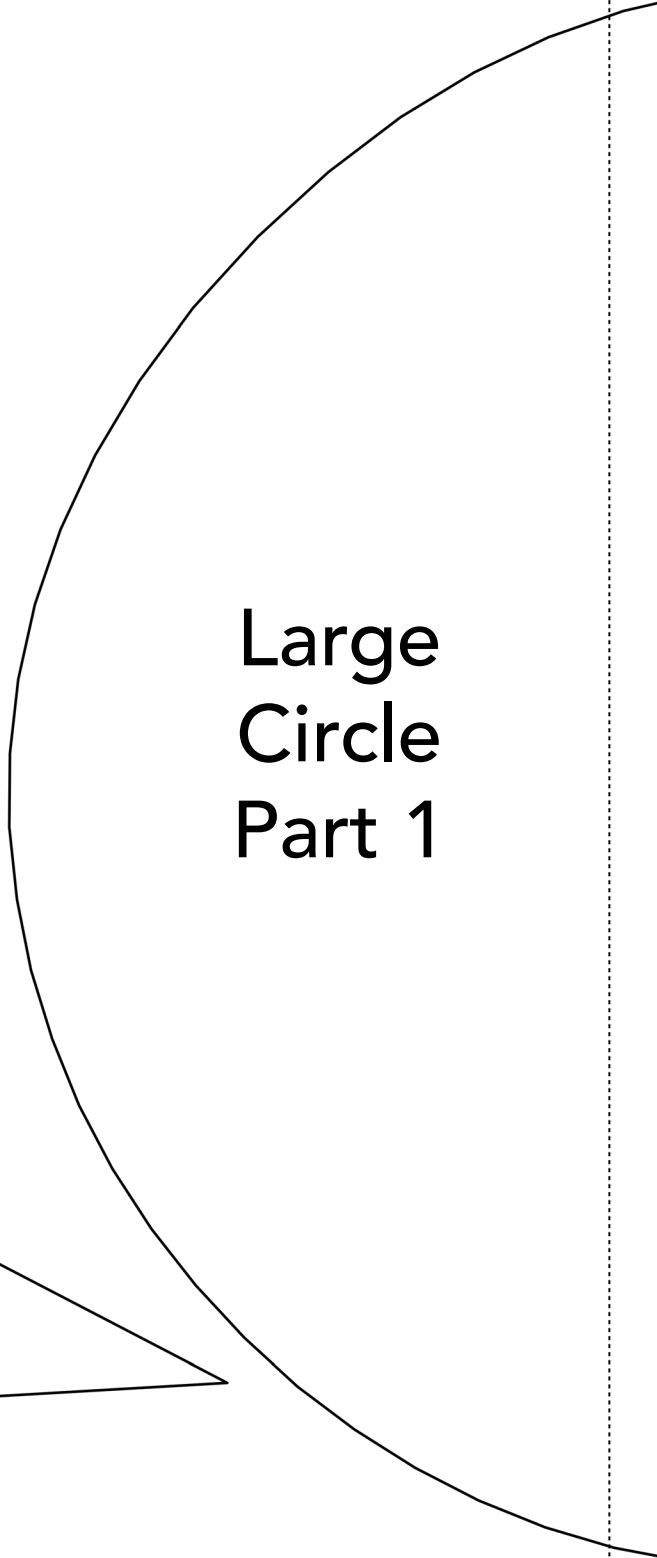




A NEW SHERIFF IN TOWN



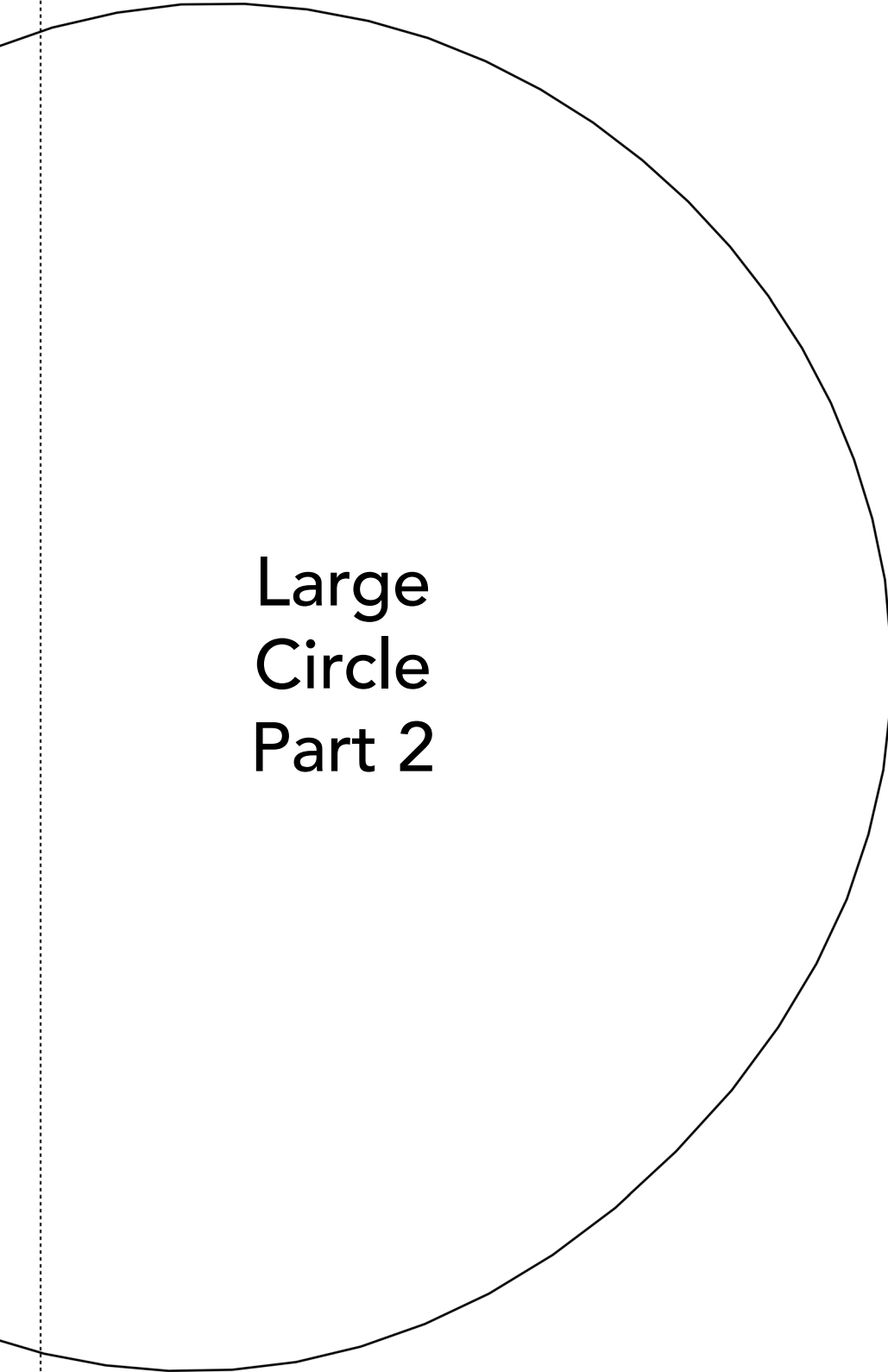
Star



**Large
Circle
Part 1**



A NEW SHERIFF IN TOWN



Large
Circle
Part 2

