

TIMELESS  
TREASURES

BROOME STREET PATTERNS



# Unleashed

*In the Dog House*

Designed by Lauren Smith



Finished quilt size: 41½" x 56½"

## Fabric Requirements

3/4 yard Fleur-CD1247 Cream

5/8 yard Dog-CD1240 Cream

1/2 yard Stripe-CD1148 Charcoal

1/4 yard each:

Texture-C8760 Blue

Texture-C8760 Green

Texture-C8760 Yellow

Texture-C8760 Pink

Texture-C8760 Red

Texture-C8760 Grape

3/4 yard Dog-CD1241 Cream

2/3 yard Dog-CD1245 Navy

3/4 yard Texture-C8760 Sapphire  
(includes 1/2 yard for binding)

2 3/4 yards Unleashed backing fabric of your choice

### Other supplies

49" x 54" batting

Foundation piecing paper

## Preparation

Print six copies of each portion of the foundation block. Tape the two sections together for each block, then cut out the block leaving approximately 1/4" beyond the outer line.

## Cutting

For easier assembly, label the cut pieces with their alphanumeric designator.

### From Fleur-CD1247 Cream:

- Cut three 2 1/2" x width-of-fabric (WOF) strips. Sub-cut twelve 2 1/2" x 8" strips (**A6** and **A7**).
- Cut two 8" x WOF strips. Sub-cut six 8" squares. Cut each square once diagonally, from corner to corner, to create twelve 8" triangles (**A11** and **A12**).

### From Dog-CD1240 Cream:

- Cut two 8 1/2" x WOF strips. Sub-cut six 8 1/2" x 7" rectangles, centering a dog on each piece (**A1**).

### From Stripe-CD1148 Charcoal:

- Cut one 11" x WOF strip. Sub-cut twelve 11" x 1 1/2" strips (**A9** and **A10**).

From each of Texture-C8760 Blue, Texture-C8760 Green, Texture-C8760 Yellow, Texture-C8760 Pink, Texture-C8760 Red and Texture-C8760 Grape:

- Cut one 5" x WOF strip. Sub-cut one 5" x 9" rectangle (**A8**), two 2 1/2" x 7 1/2" strips (**A2** and **A3**) and two 2 1/2" x 6" strips (**A4** and **A5**).

### From Dog-CD1241 Cream:

- Cut two 3 1/2" x WOF strips. Sub-cut twelve 3 1/2" squares for cornerstones.
- Cut five 3 1/2" x WOF strips. Sew the strips together end to end. Sub-cut two 3 1/2" x 41 1/2" strips and two 3 1/2" x 50 1/2" strips for the outer border.

### From Dog-CD1245 Navy:

- Cut six 3 1/2" x WOF strip. Sub-cut seventeen 3 1/2" x 12 1/2" strips for sashing.

### From Texture-C8760 Sapphire:

- Cut five 1 1/2" x WOF strips. Sew the strips together end to end. Sub-cut two 1 1/2" x 35 1/2" strips and two 1 1/2" x 48 1/2" strips for the inner border.
- Cut five 2 1/2" x WOF strips for binding.

## Foundation Piecing Tips

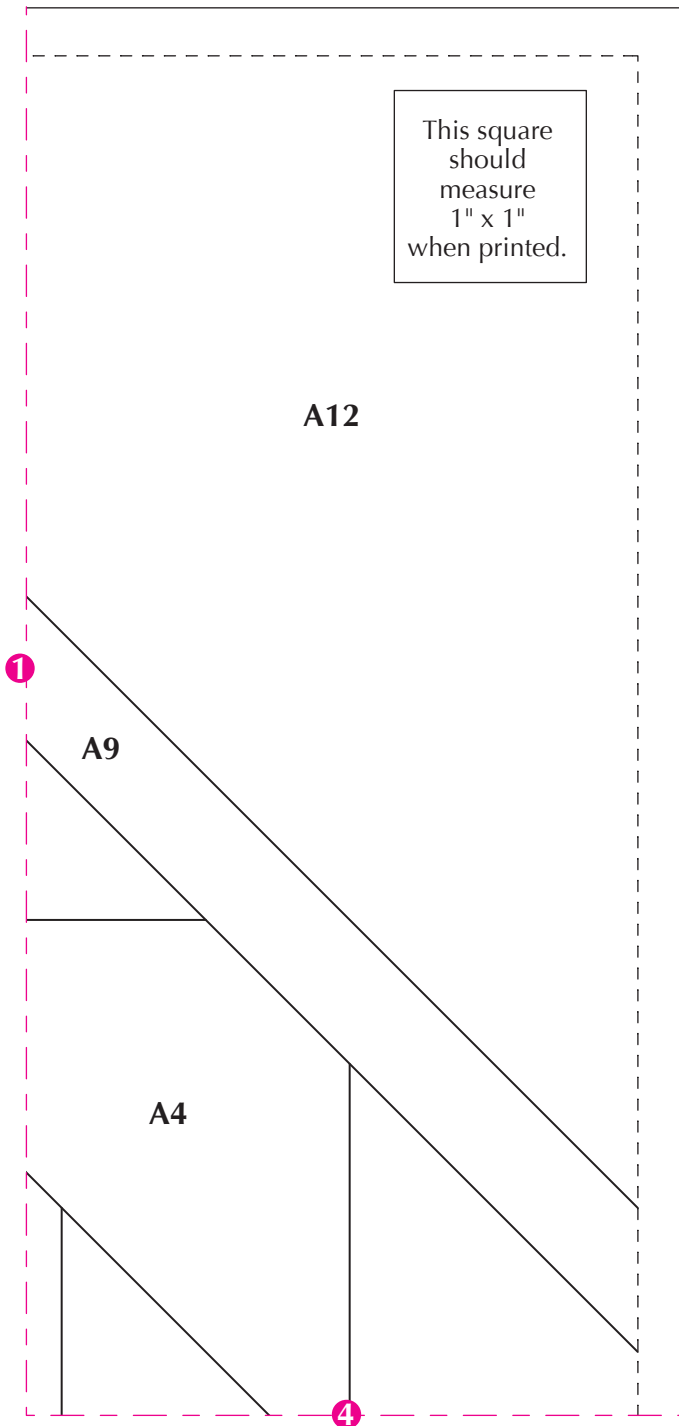
- This pattern uses foundation piecing to create the blocks. The foundation piecing templates have letters and numbers in the blocks to guide you through the proper sewing sequence. Follow the number sequence for piecing with the designated fabrics, i.e. **A1**, **A2**, etc.
- The heavy black lines on the template are the sewing lines and the lighter outline is the cutting line.
- If you aren't familiar with standard paper piecing techniques, look for an online resource to detail the process.
- Use a 90/14 needle in your sewing machine. Set the stitch length between 18 and 22 stitches. This needle and stitch length make for easier paper removal.
- The printed side of the pattern is the back side and all sewing is done from that side. The fabric pieces will go on the unprinted side of the template.
- When piecing is complete, trim the sections on the outer line. Leave the paper in place.



## Block Construction

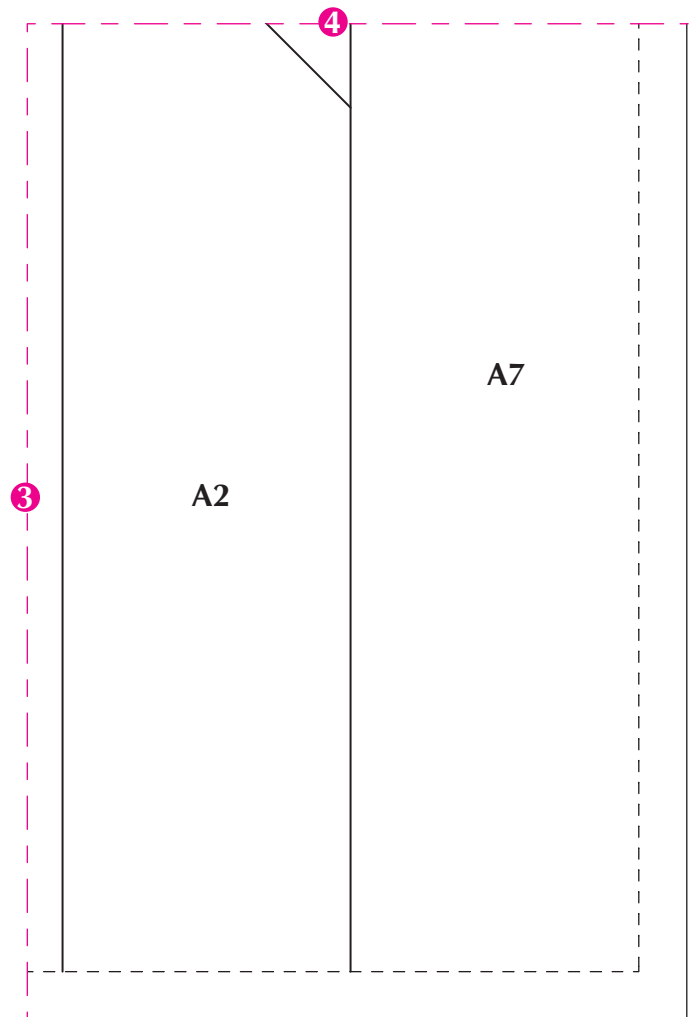
All seam allowances are  $\frac{1}{4}$ " and pieces are sewn right sides together.

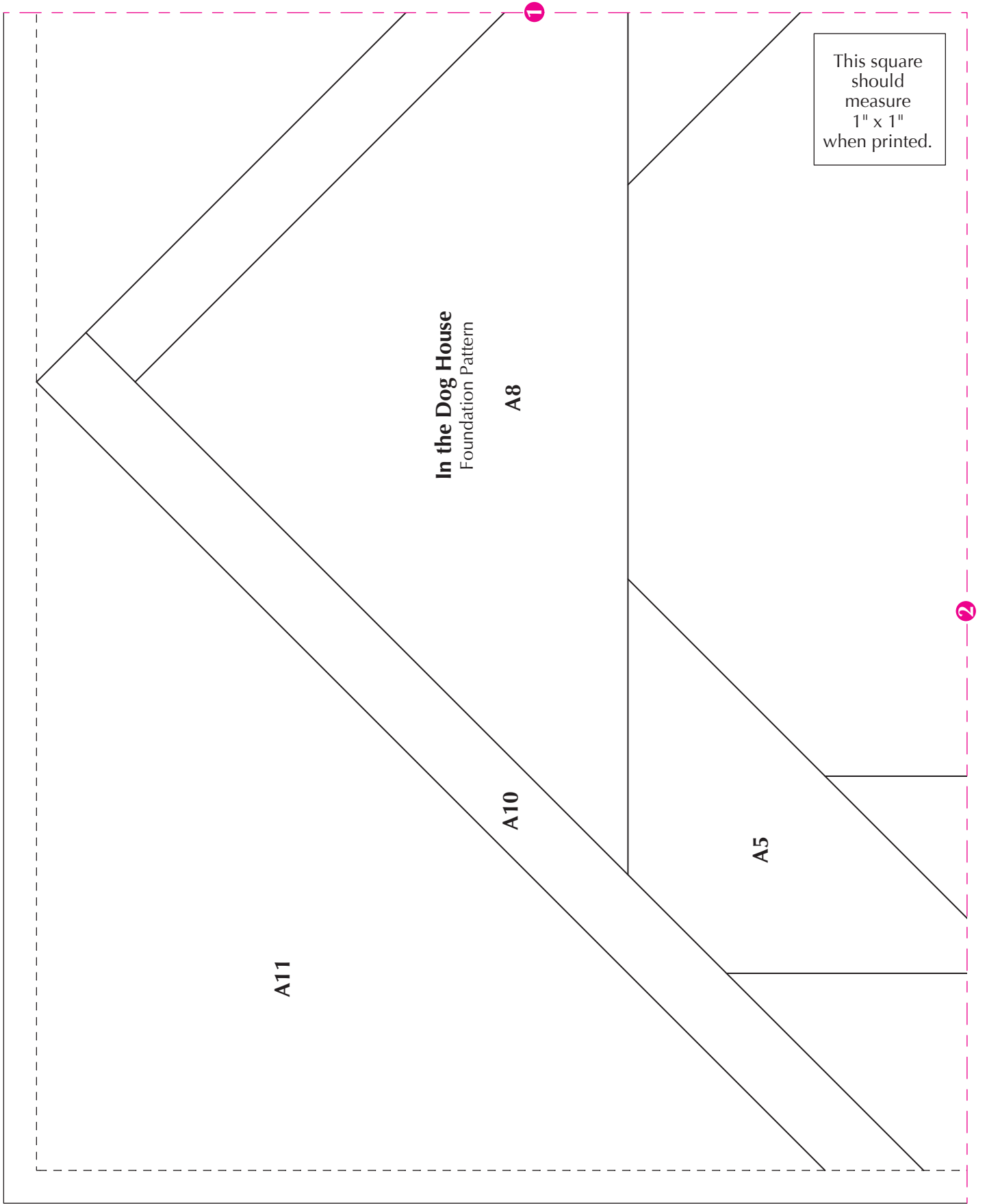
1. Foundation-piece a total of six doghouse blocks, one of each color (Blue, Green, Yellow, Pink, Red and Grape).



## Quilt Top Assembly

2. Starting with a cornerstone square, alternately sew together two CD1245 Navy sashing strips and three CD1241 Cream cornerstone squares. Make a total of four horizontal sashing rows.
3. Following the quilt photo, lay out the pieced blocks in three rows of two blocks each. Starting and ending with a CD1245 Navy sashing strip, alternately sew the sashing and blocks together in each row.
4. Matching adjacent seams, sew the sashing and block rows together in order.
5. Sew a  $1\frac{1}{2}$ "  $\times$   $48\frac{1}{2}$ " C8760 Sapphire strip to each side of the quilt center. Sew a  $1\frac{1}{2}$ "  $\times$   $35\frac{1}{2}$ " Sapphire strip to the top and the other to the bottom of the quilt center.





This square should measure 1" x 1" when printed.

3

2

A3

A6

6. Sew a  $3\frac{1}{2}'' \times 58\frac{1}{2}''$  CD1241 Cream strip to each side of the quilt center. Sew a  $3\frac{1}{2}'' \times 41\frac{1}{2}''$  Cream strip to the top and the other to the bottom of the quilt center.

### Finishing

7. Layer the quilt top, batting, and backing, and quilt as desired.
8. Stitch the binding strips together end to end using diagonal seams. Fold and press the resulting long strip in half lengthwise with wrong sides together. Stitch to the quilt front, matching raw edges and mitering the corners.
9. Fold the binding to the quilt underside and hand-stitch the folded edge to the quilt back.

Laureen Smith  
www.tourmalinethymequilts.com  
@tandtquilts (Facebook)  
ttquilts (Instagram)

©2022 Timeless Treasures  
www.ttfabrics.com  
This pattern is for individual home use only. This pattern may not be reproduced for commercial purposes (i.e., may not be sold).