



Notice the difference

STEELIT® PRODUCT RANGE 2022



steelit.be

“

Pre-finished internal steel doors

With STEELIT[®], treat your home to superior internal steel doors. STEELIT[®] doors are characterised by elegant, authentic and timeless design. That makes STEELIT[®] a great match for almost any interior; from cosy traditional to sleek contemporary.

As you'll see for yourself, with STEELIT[®], showing visitors the door gets a whole new meaning...

~ Frank Vandermarliere
Manager

”



ROBUST YET REFINED

STEELIT® is synonymous with perfect finish resulting from exceptional attention to detail and outstanding execution, thus meeting the highest requirements and standards. Each individual STEELIT® internal door is made with passion and craftsmanship, according to best work practices and based on years of experience with steel, whatever the style.



TRUE CRAFTSMANSHIP

At every stage in the development of our STEELIT® doors, we considered what really matters: a high-quality finish that will last for years to come.

And at STEELIT® we truly want to go that extra mile. We produce our doors exclusively on the basis of our extensive range of standard dimensions. This concept allows us to keep the price of our steel internal doors firmly down.



WHY OPT FOR STEELIT® DOORS?





DOORS COLLECTION	8
DOOR DUO COLLECTION	10
SLIDE COLLECTION	16
SLIDE DUO COLLECTION	18
SLIDE INTENSE COLLECTION	20
SLIDE INTENSE DUO COLLECTION	22
SLIDE AUTOMATIC COLLECTION	24
WOOD COLLECTION	26
WOOD SLIDE COLLECTION	28
WOOD SLIDE INTENSE COLLECTION	30
INVISIBLE COLLECTION	34
MODULAIR COLLECTION	40
HANDLE COLLECTION	48
GLASS COLLECTION	50

DOOR COLLECTION



STEELIT® DOOR DIMENSIONS

Net dimensions width x height	Minimum width of unfinished door opening	Minimum height of unfinished door opening
77,5 x 201,4 cm	80 cm	203 cm
77,5 x 211,4 cm	80 cm	213 cm
87,5 x 201,4 cm	90 cm	203 cm
87,5 x 211,4 cm	90 cm	213 cm
97,5 x 211,4 cm	100 cm	213 cm
97,5 x 231,4 cm	100 cm	233 cm
97,5 x 251,4 cm*	100 cm	253 cm

* not available in
CLASSIC 4 - CLASSIC 6 - CLASSIC 12'

STEELIT® door handle options: see page 46 & 47

—

glass options: see page 48 & 49

The secret behind every STEELIT® DOOR lies in the perfect fit between door and wall. The frame insert is fitted with mounting brackets to ensure that it can be firmly and robustly secured to the wall while providing a seamless finish.

DOOR DUO COLLECTION



STEELIT® DOOR DUO DIMENSIONS

Net dimensions width x height	Minimum width of unfinished door opening	Minimum height of unfinished door opening
153,6 x 201,4 cm	156 cm	203 cm
153,6 x 211,4 cm	156 cm	213 cm
173,6 x 201,4 cm	176 cm	203 cm
173,6 x 211,4 cm	176 cm	213 cm
193,6 x 231,4 cm	196 cm	233 cm
193,6 x 251,4 cm*	196 cm	253 cm

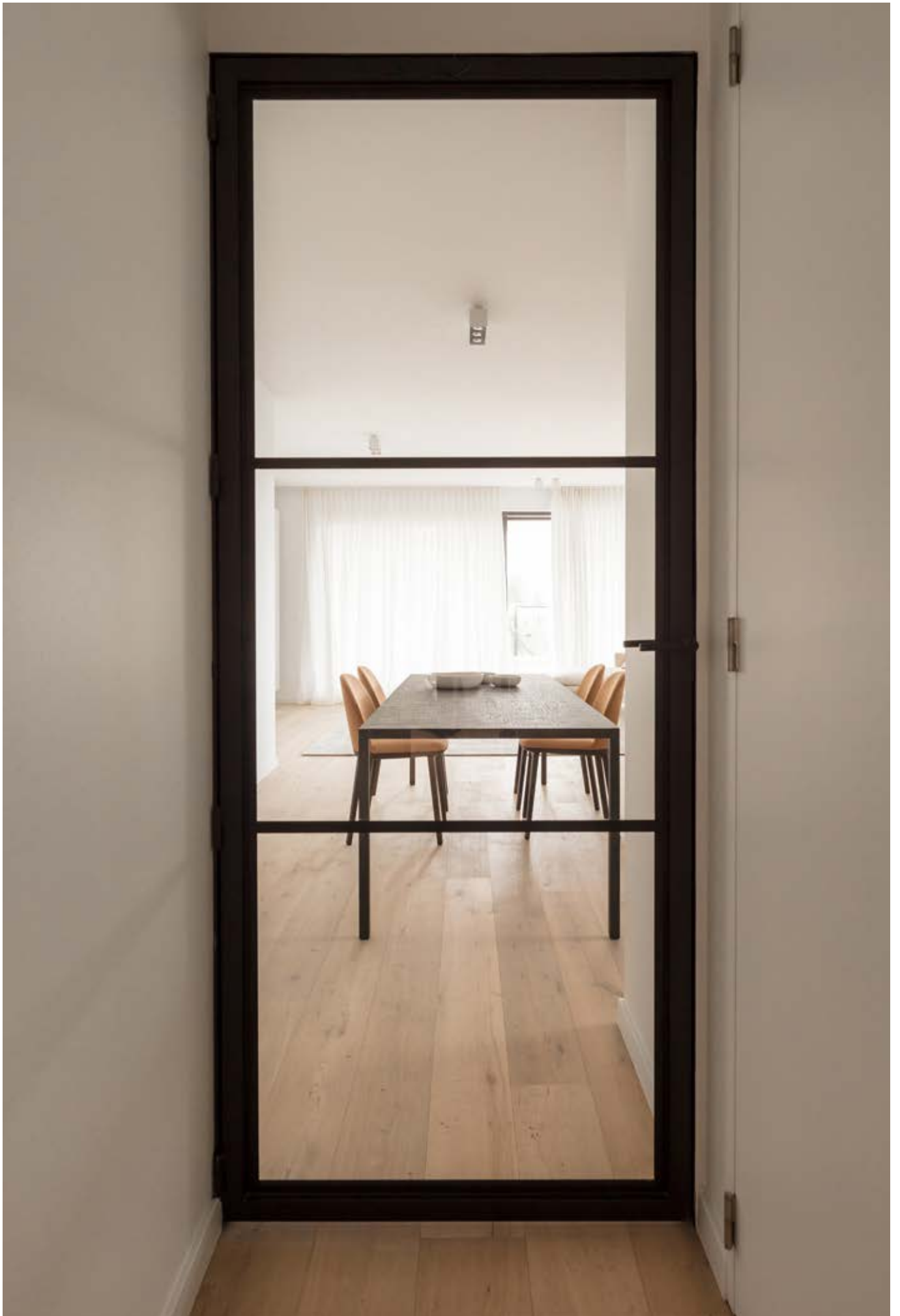
* not available in
CLASSIC 4 - CLASSIC 6 - CLASSIC 12'

STEELIT® door handle options: see page 46 & 47

—

glass options: see page 48 & 49

The secret behind every STEELIT® DOOR lies in the perfect fit between door and wall. The frame insert is fitted with mounting brackets to ensure that it can be firmly and robustly secured to the wall while providing a seamless finish.









SLIDE COLLECTION





STEELIT® **SLIDE** DIMENSIONS

Net dimensions width x height	Recommended finished door opening	Minimal space required above door opening
95,7 x 209,5 cm	90 x 205 à 209 cm	16 cm
95,7 x 229,5 cm	90 x 225 à 229 cm	16 cm

STEELIT® glass options: see page 48 & 49

! STEELIT® SLIDE doors are fitted with a soft-close system as standard.

SLIDE DUO COLLECTION





STEELIT® **SLIDE DUO** DIMENSIONS

Net dimensions width x height	Recommended finished door opening	Minimal space required above door opening
191,4 x 209,5 cm	186 x 205 à 209 cm	16 cm
191,4 x 229,5 cm	186 x 225 à 229 cm	16 cm

STEELIT® glass options: see page 48 & 49

! STEELIT® SLIDE doors are fitted with a soft-close system as standard.

SLIDE INTENSE COLLECTION



CLASSIC 8



MODERN 3



CLASSIC 4



CLASSIC 6



CLASSIC 12



MODERN UNI



MODERN 4



MODERN 4E



STEELIT® SLIDE INTENSE DIMENSIONS

Net dimensions width x height	Recommended finished door opening	Minimal space required above door opening
95,7 x 209,5 cm	90 x 205 à 209 cm	11 cm
95,7 x 229,5 cm	90 x 225 à 229 cm	11 cm

STEELIT® glass options: see page 48 & 49

! STEELIT® SLIDE doors are fitted with a soft-close system as standard.

SLIDE INTENSE DUO COLLECTION





STEELIT® SLIDE INTENSE DUO DIMENSIONS

Net dimensions width x height	Recommended finished door opening	Minimal space required above door opening
191,4 x 209,5 cm	186 x 205 à 209 cm	11 cm
191,4 x 229,5 cm	186 x 225 à 229 cm	11 cm

STEELIT® glass options: see page 48 & 49

! STEELIT® SLIDE doors are fitted with a soft-close system as standard.

SLIDE AUTOMATIC COLLECTION

STEELIT® SLIDE AUTOMATIC DIMENSIONS

Net dimensions width x height	Recommended finished door opening	Minimal space required above door opening
95,7 x 209,5 cm	90 x 205 à 209 cm	10 cm
95,7 x 229,5 cm	90 x 225 à 229 cm	10 cm

STEELIT® glass options: see page 48 & 49

STEELIT® SLIDE AUTOMATIC DUO DIMENSIONS

Net dimensions width x height	Recommended finished door opening	Minimal space required above door opening
191,4 x 209,5 cm	186 x 205 à 209 cm	10 cm
191,4 x 229,5 cm	186 x 225 à 229 cm	10 cm

STEELIT® glass options: see page 48 & 49



THE STEELIT® SLIDE AUTOMATIC NEEDS TO BE CONNECTED TO
THE POWER SUPPLY AT THE HEIGHT OF THE RAIL.





draadloze schakelaar
interrupteur sans fil



WOOD COLLECTION



WOOD CLASSIC 4
RUSTIC OR PRIME



WOOD DUO CLASSIC 4
RUSTIC OR PRIME



WOOD CLASSIC 6
RUSTIC OR PRIME



WOOD DUO CLASSIC 6
RUSTIC OR PRIME



WOOD CLASSIC
RUSTIC OR PRIME



WOOD DUO CLASSIC
RUSTIC OR PRIME

STEELIT® WOOD DIMENSIONS

Net dimensions width x height	Recommended finished door opening	Minimal space required above door opening
77,5 x 201,4 cm	80 cm	203 cm
77,5 x 211,4 cm	80 cm	213 cm
87,5 x 201,4 cm	90 cm	203 cm
87,5 x 211,4 cm	90 cm	213 cm
97,5 x 211,4 cm	100 cm	213 cm
97,5 x 231,4 cm	100 cm	233 cm
97,5 x 251,4 cm	100 cm	253 cm

STEELIT® WOOD DIMENSIONS

153,6 x 201,4 cm	156 cm	203 cm
153,6 x 211,4 cm	156 cm	213 cm
173,6 x 201,4 cm	176 cm	203 cm
173,6 x 211,4 cm	176 cm	213 cm
193,6 x 231,4 cm	196 cm	233 cm
193,6 x 251,4 cm	196 cm	253 cm

WOOD SLIDE COLLECTION



WOOD SLIDE CLASSIC 4
RUSTIC OF/OU PRIME



WOOD SLIDE DUO CLASSIC 4
RUSTIC OF/OU PRIME



WOOD SLIDE CLASSIC 6
RUSTIC OF/OU PRIME



WOOD SLIDE DUO CLASSIC 6
RUSTIC OF/OU PRIME



WOOD SLIDE CLASSIC
RUSTIC OF/OU PRIME



WOOD SLIDE DUO CLASSIC
RUSTIC OF/OU PRIME



STEELIT® WOOD SLIDE DIMENSIONS

Net dimensions width x height	Recommended finished door opening	Minimal space required above door opening
95,7 x 209,5 cm	90 x 205 à 209 cm	16 cm
95,7 x 229,5 cm	90 x 225 à 229 cm	16 cm

STEELIT® WOOD DUO SLIDE DIMENSIONS

191,4 x 209,5 cm	186 x 205 à 209 cm	16 cm
191,4 x 229,5 cm	186 x 225 à 229 cm	16 cm

WOOD SLIDE INTENSE COLLECTION



SLIDE INTENSE CLASSIC 4
RUSTIC OR PRIME



SLIDE INTENSE DUO CLASSIC 4
RUSTIC OR PRIME



SLIDE INTENSE CLASSIC 6
RUSTIC OR PRIME



SLIDE INTENSE DUO CLASSIC 6
RUSTIC OR PRIME



SLIDE INTENSE CLASSIC
RUSTIC OR PRIME



SLIDE INTENSE CLASSIC
RUSTIC OR PRIME



STEELIT® WOOD SLIDE INTENSE DIMENSIONS

Net dimensions width x height	Recommended finished door opening	Minimal space required above door opening
95,7 x 209,5 cm	90 x 205 à 209 cm	16 cm
95,7 x 229,5 cm	90 x 225 à 229 cm	16 cm

STEELIT® WOOD DUO SLIDE INTENSE DIMENSIONS

191,4 x 209,5 cm	186 x 205 à 209 cm	16 cm
191,4 x 229,5 cm	186 x 225 à 229 cm	16 cm



WOOD STRUCTURE

		Wood Structure
	Oak Prime	Oak veneer panel in first choice finish
	Oak Rustic	Oak veneer panel in rustic finish

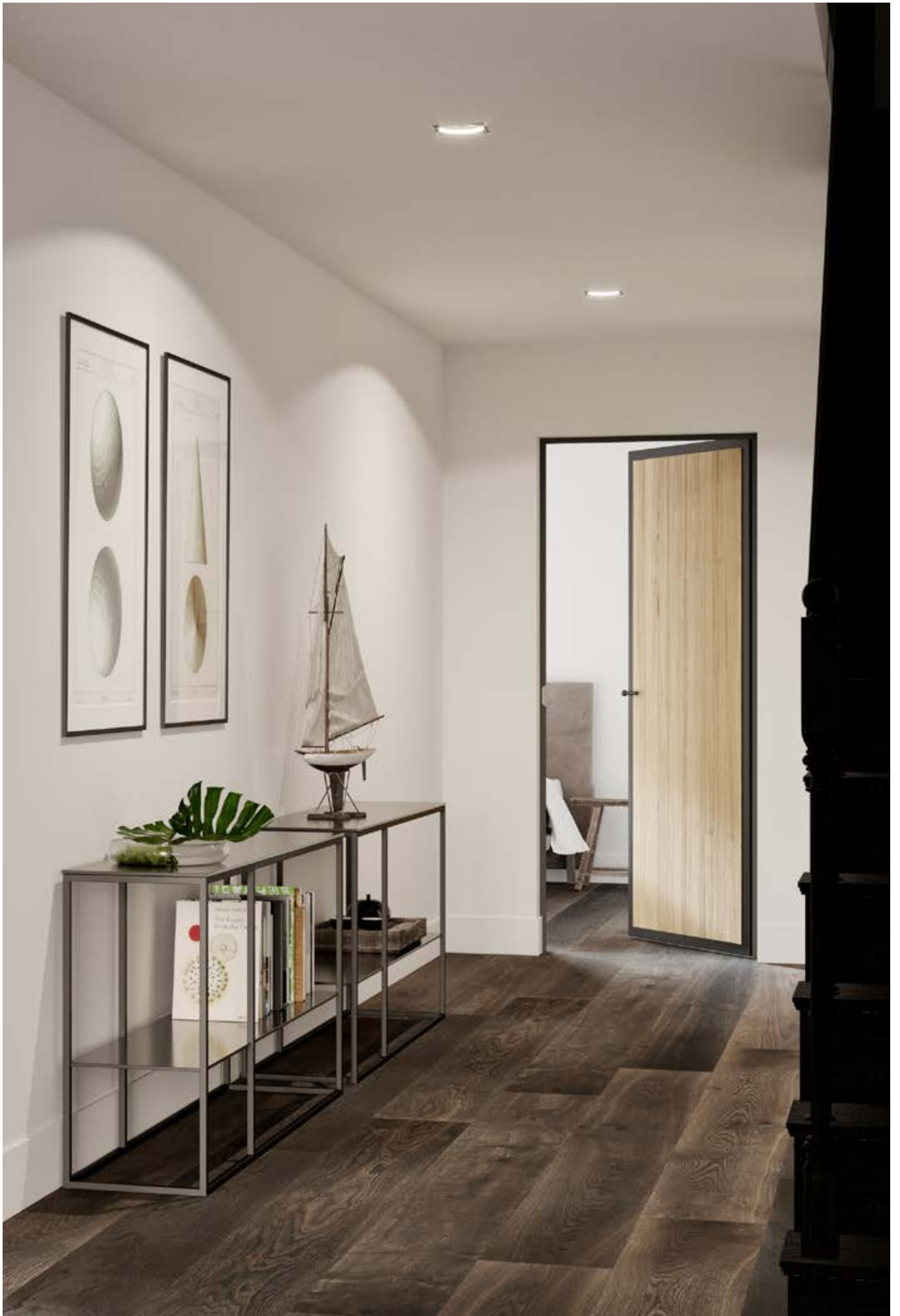
WOOD OPTIONS



		Finish
Untreated		Standard
Natural oak oil		<i>Option</i>
Weathered oak oil		<i>Option</i>

		WOOD
Cabin hook		Characteristic closure - Optional







INVISIBLE S10 COLLECTION

The STEELIT® INVISIBLE S10 door with **wooden frame** is fitted with **4 built-in adjustable hinges**. In contrast to other STEELIT® DOORS, STEELIT® INVISIBLE doors do not have a steel frame. The invisible hinges are used to bring the door perfectly in line with the wooden frame.

STEELIT® INVISIBLE S10 DIMENSIONS

Net dimensions width x height	Recommended finished door opening	Minimal space required above door opening
83 x 201,5 cm	92 cm	206 cm
83 x 211,5 cm	92 cm	216 cm
93 x 211,5 cm	102 cm	216 cm
93 x 231,5 cm	102 cm	236 cm

STEELIT® door handle options: see page 46 & 47

—

glass options: see page 48 & 49



INVISIBLE S20 COLLECTION

The STEELIT® INVISIBLE S20 door with an **aluminium frame** is fitted with **4 built-in adjustable hinges**. In contrast to other STEELIT® DOORS, STEELIT® INVISIBLE doors do not have a steel frame. The invisible hinges are used to bring the door perfectly in line with the aluminium frame.

STEELIT® INVISIBLE S20 DIMENSIONS

Net dimensions width x height	Recommended finished door opening	Minimal space required above door opening
83 x 201,5 cm	90 cm	206 cm
83 x 211,5 cm	90 cm	216 cm
93 x 211,5 cm	100 cm	216 cm
93 x 231,5 cm	100 cm	236 cm

STEELIT® door handle options: see page 46 & 47

—

glass options: see page 48 & 49





The STEELIT® MODULAIR concept offers a range of possibilities using a **STEELIT® DOOR** or **STEELIT® DOOR DUO** and side and top windows to fill larger door openings.



1



2



3

MODULAIR DOOR COLLECTION

The STEELIT® range has been carefully expanded with a collection of side and top windows in standard dimensions. This provides us with endless possibilities to combine these windows with our standard STEELIT® MODULAIR DOOR or STEELIT® MODULAIR DOOR DUO. As a result, we offer solutions for wider or higher door openings, without compromising on our competitive prices compared to custom-made solutions.

Combinations only possible with these door dimensions	STEELIT® SIDE MODULAIR	STEELIT® TOP MODULAIR
STEELIT® MODULAIR DOOR	Compatible	Compatible
87,5 x 211,4 cm	✓	✓
97,5 x 231,4 cm	✓	✓*

* ONLY TO COMBINE WITH TMTx 100 & TMTx 102

Combinations only possible with these door dimensions	STEELIT® SIDE MODULAIR	STEELIT® TOP MODULAIR
STEELIT® MODULAIR DOOR DUO	Compatible	Compatible
173,6 x 211,4 cm	✓	✓
193,6 x 231,4 cm	✓	✓*

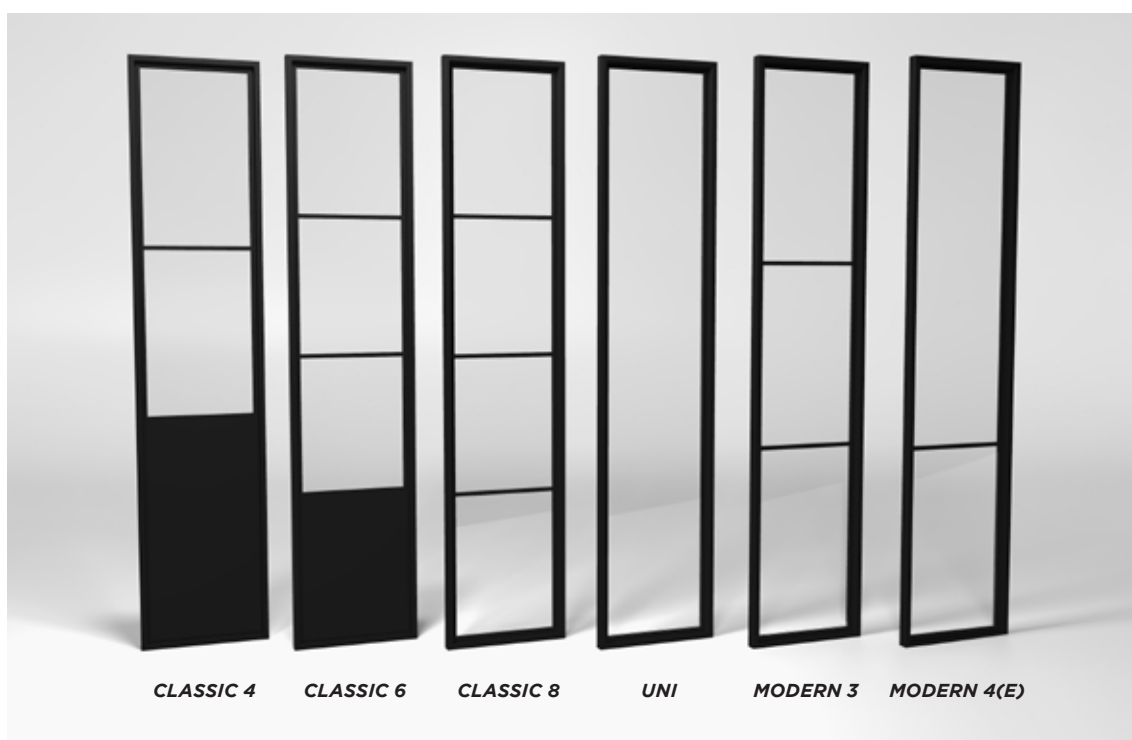
* ONLY TO COMBINE WITH TMTx 100 & TMTx 102

A FEW EXAMPLES

	STEELIT® MODULAIR	STEELIT® MODULAIR	Net dimensions width x height
1	Modulair Modern 4 DUO	4 x SIDE Modulair	373,6 x 231,4 cm
2	Modulair Modern 4	1 x SIDE Modulair 1 x TOP Modulair	132,5 x 260 cm
3	Modulair Classic 8 DUO	2 x SIDE Modulair 1 x TOP Modulair	263,6 x 250 cm

SIDE MODULAIR 45 COLLECTION

A SIDE MODULAIR 45 window is fastened to the **left and/or right** hand side of a STEELIT® DOOR. Feeling creative? Use a SIDE MODULAIR as a stand-alone window in rooms where you need natural light.

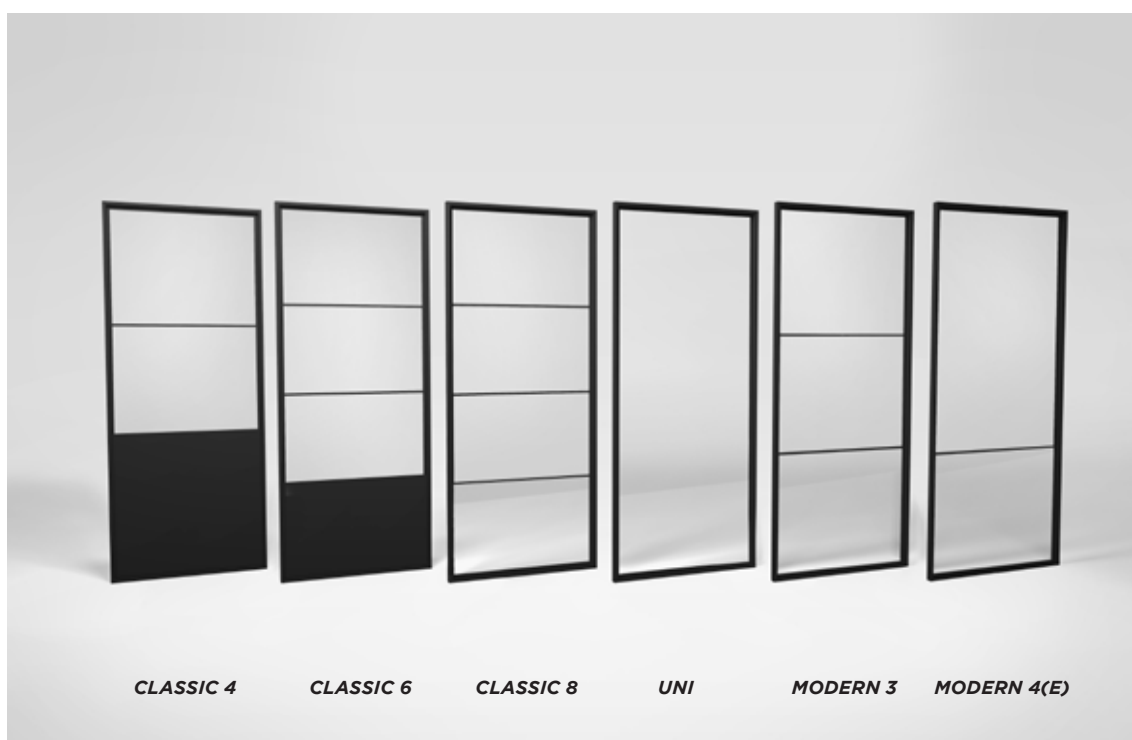


STEELIT® SIDE MODULAIR 45 DIMENSIONS

	width	height
<i>CLASSIC 4</i> <i>CLASSIC 6</i> <i>CLASSIC 8</i>	45cm	211,4cm
<i>UNI</i> <i>MODERN 3</i> <i>MODERN 4(E)</i>	45cm	231,4cm

SIDE MODULAIR 90 COLLECTION

A SIDE MODULAIR 90 window is fastened to the **left and/or right** hand side of a STEELIT® DOOR. Feeling creative? Use a SIDE MODULAIR as a stand-alone window in rooms where you need natural light.

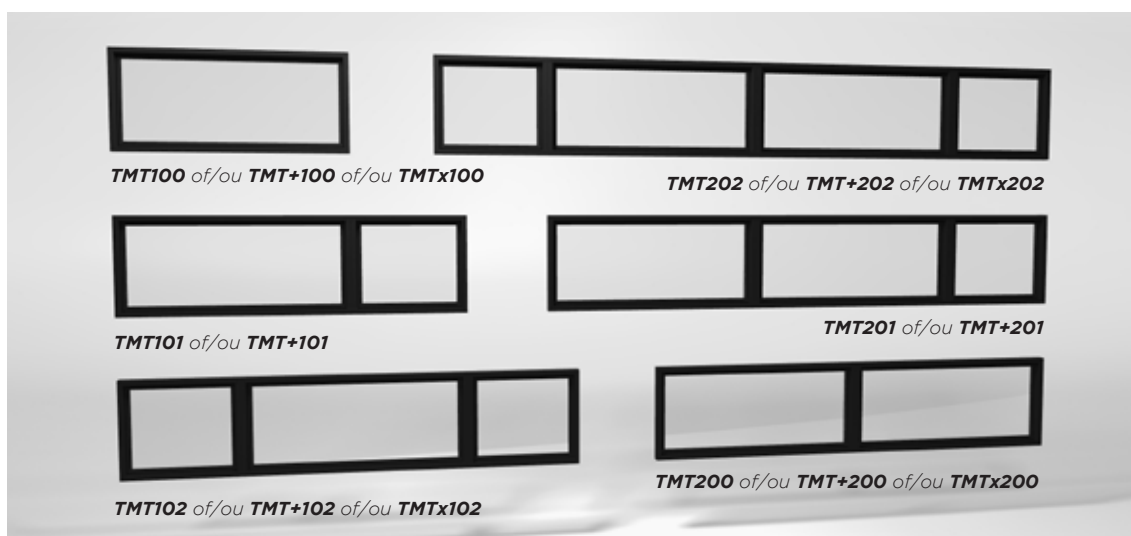


STEELIT® SIDE MODULAIR 90 DIMENSIONS

	width	height
CLASSIC 4 CLASSIC 6 CLASSIC 8	90cm	211,4cm
UNI MODERN 3 MODERN 4(E)	90cm	231,4cm

TOP MODULAIR COLLECTION

A TOP MODULAIR window is **fastened above** a STEELIT® DOOR. Choose a single MODULAIR DOOR or MODULAIR DOOR DUO combination or match with 1 or 2 SIDE MODULAR windows.

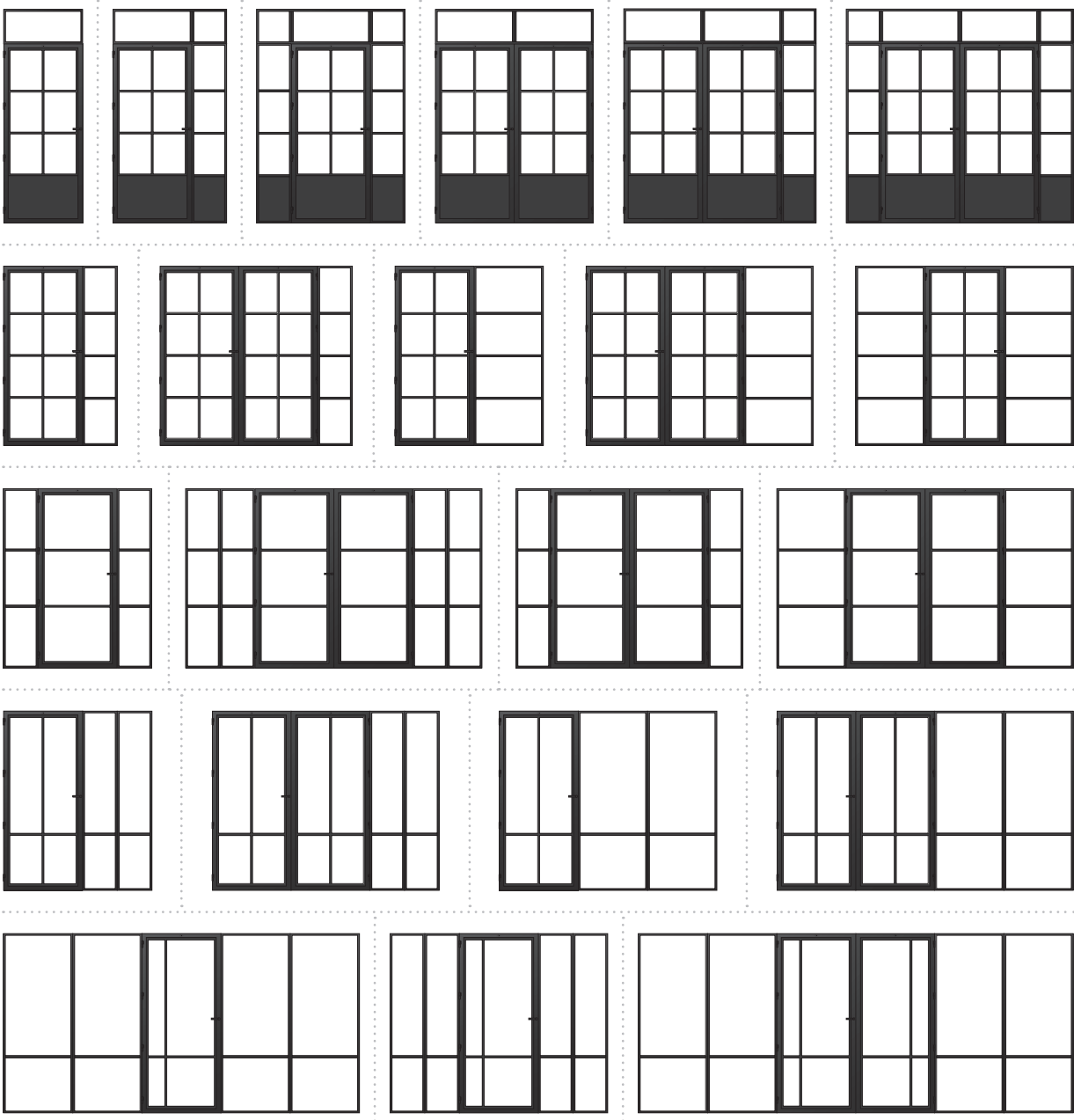


STEELIT® TOP MODULAIR DIMENSIONS

	DOOR			DOOR DUO		
height	TMT100	TMT101	TMT102	TMT200	TMT201	TMT202
38,6 cm - TMT	87,5 cm	132,5 cm	177,5 cm	173,6 cm	218,6 cm	263,6 cm
height	TMT+100	TMT+101	TMT+102	TMT+200	TMT+201	TMT+202
48,6 cm - TMT+	87,5 cm	132,5 cm	177,5 cm	173,6 cm	218,6 cm	263,6 cm
height	TMTx100	TMTx101	TMTx102	TMTx200	TMTx201	TMTx202
38,6 cm - TMTx	97,5 cm	-	187,5cm	193,6 cm	-	283,6 cm

MODULAIR EXAMPLES

You will find below every possible combination you can create with the STEELIT® Modulair system. Each DOOR, DUO and SIDE can of course be complemented with a model of your choice. The example shown here uses the UNI model. Every set-up example can be flipped as well.



THIS MODULAIR COMBINATION

W 2636 x H 2500 mm

STEELIT® CLASSIC 8 DUO

2 x SIDE Modulair Classic 8

1 x TOP Modulair TMT202

263,6 cm

45 cm

173,6 cm

45 cm

250 or 260 cm

38,6 or 48,6 cm

211,4 cm

DISCOVER THE MODULAIR CONCEPT



DOOR HANDLES

Standard door handle included



Available in
SKS01Z black
SKS01W white
SKS01M brass (optional)

Standard door handle included



Available in
SKS02Z black
SKS02W white
SKS02M brass (optional)

Moderndoor handle *Optional*



Available in
SKM01Z black
SKM01W white
SKM01M brass (optional)

Modern door handle included



Available in
SKM02Z black
SKM02W white
SKM02M brass (optional)

DOOR HANDLES

**Invisible door handle
included**



Available in
SKI01Z black
SKI01W white

**Invisible door handle
included**



Available in
SKI02Z black
SKI02W white

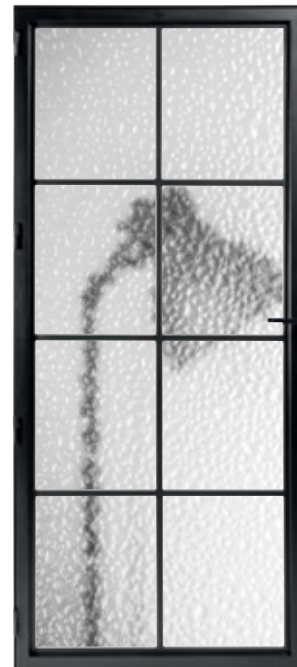
GLASS COLLECTION



STANDARD GLASS
Supplied as standard
Safety glass



MILK GLASS
Optional
Safety glass



CATHEDRAL GLASS
Optional
Reinforced glass



GLASS COLLECTION



FLUTES GLASS *

Optional

Reinforced glass



FUME GLASS

Optional

Safety glass

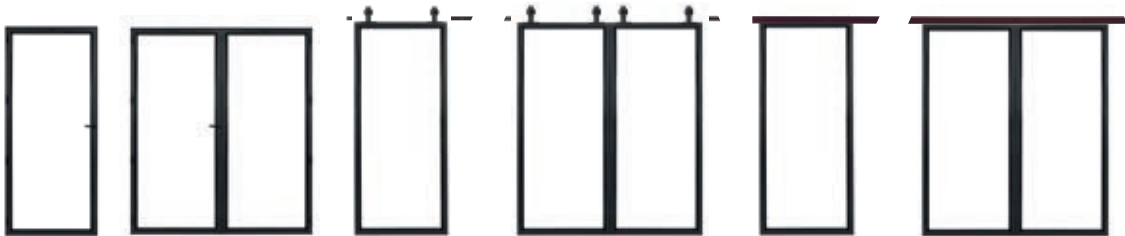


CONFIGURATOR

ORDERING YOUR STEELIT® DOOR

1 SELECT YOUR DOOR

The most important part of the selection process is also the easiest: choosing from the entire STEELIT® range: Door, Duo, Slide, Slide Duo, Slide Intense, Slide Intense Duo, Slide Automatic or Slide Automatic Duo.



2 SELECT YOUR DIMENSIONS

A list of the various openings is provided for each door. Measure these carefully and then use our online configurator to determine the optimal dimensions of your new STEELIT® door.

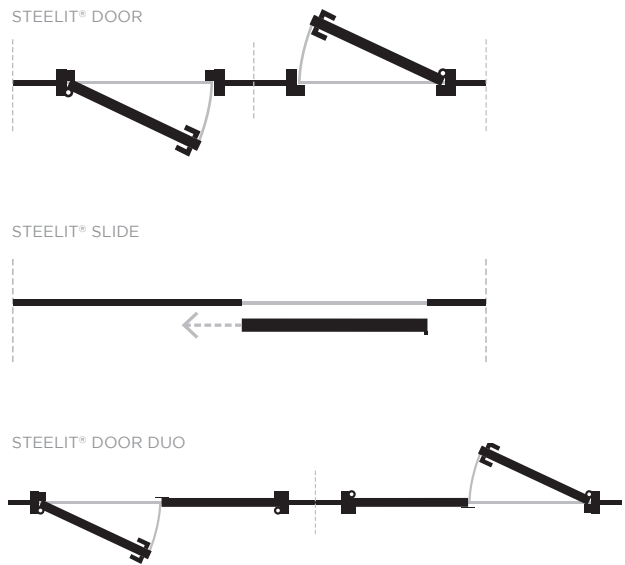
Net dimensions	Door opening
77,5 x 201,4 cm	80 x 203 cm
77,5 x 211,4 cm	80 x 213 cm
87,5 x 201,4 cm	90 x 203 cm
87,5 x 211,4 cm	90 x 213 cm
97,5 x 211,4 cm	100 x 213 cm
97,5 x 231,4 cm	100 x 233 cm
97,5 x 251,4 cm	100 x 253 cm

3

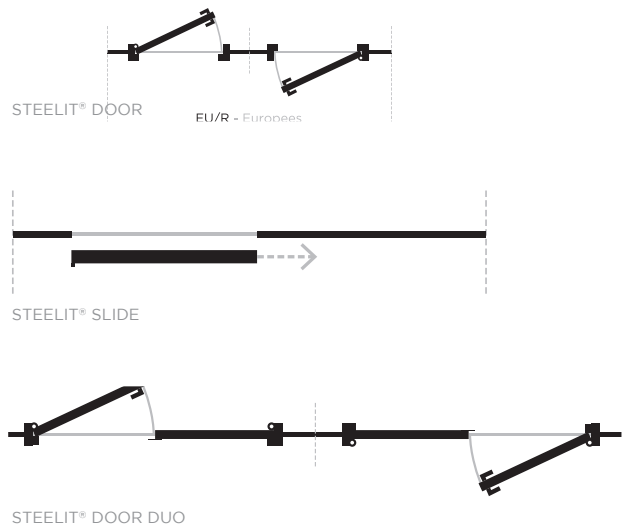
SELECT YOUR SWING DIRECTION

Are you having trouble figuring out whether a door swings to the right or left? These images clearly illustrate which is which. Note carefully on which side of the wall the hinges are and where the handle is.

EU/L - EU/G EUROPEAN LEFT







EU/R - EU/D EUROPEAN RIGHT





4

SELECT YOUR DOOR HANDLE

AVAILABLE INVISIBLE DOOR HANDLES

	<p>Standard door handle</p>	<p>SKS01Z black SKS01W white SKS01M brass</p>
	<p>Standard door handle</p>	<p>SKS02Z black SKS02W white SKS02M brass</p>
	<p>Modern door handle</p>	<p>SKM01Z black SKM01W white SKM01M brass</p>
	<p>Modern door handle</p>	<p>SKM02Z black SKM02W white SKM02M brass</p>

AVAILABLE INVISIBLE DOOR HANDLES *DISPONIBLES*

	<p>Classic door handle Invisible door handle *</p>	<p><i>SKI01Z black</i> <i>SKI01W white</i></p>
	<p>Classic door handle Invisible door handle *</p>	<p><i>SKI02Z black</i> <i>SKI02W white</i></p>

5

SELECT YOUR GLAZING



STANDARD GLASS
Supplied as standard
Safety glass



MILK GLASS
Optional
Safety glass



CATHEDRAL GLASS
Optional
Reinforced glass



FLUTES GLASS *
Optional
Reinforced glass



FUME GLASS
Optional
Safety glass

* Only available lined in vertical direction

GLASS OPTIONS



Standard glass *	Standard
Milk glass *	Optional
Cathedral glass •	Optional
Flutes glass •	Optional
Fume glass *	Optional

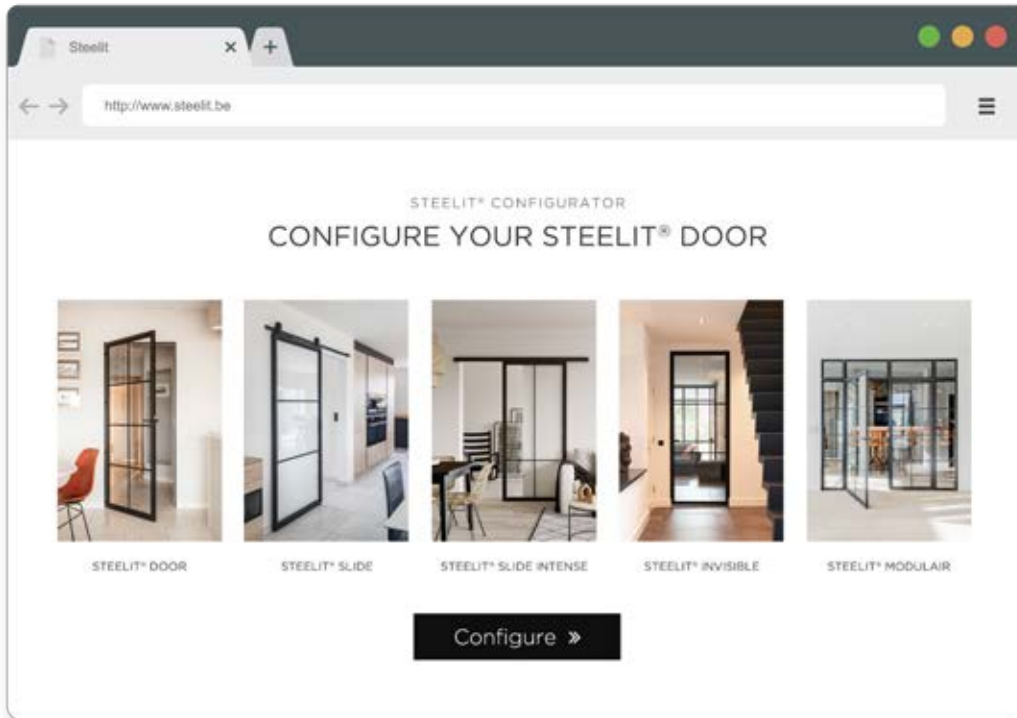
* Safety glass
• Reinforced glass



AVAILABLE COLOURS



RAL 9005 Black	<i>Standard</i>
RAL 9016 White	Optional



STEELIT® CONFIGURATOR

Use the STEELIT® CONFIGURATOR to assemble your own STEELIT® door system step by step.

SPECIFICATIONS			QUANTITY	SIZE
STEELIT® MODULAIR CONFIGURATOR				
Name:		Language: NL		
Creation date:				
<small>This drawing is property of Steelit®. All rights are reserved. Reproduction in whole or in parts is prohibited without the written consent of the copyright owner Steelit®.</small>				
DOOR MODULAIR				
Model: Modem3				
Type: 60 Left - Double				
SIDE MODULAIR				
Model: Modem3 (with subdivision)				
Type: 606 modular				
Position: Right				
TOP MODULAIR				
Model: INVISIBLE (no subdivision)				
Type: TOP modular 1M7201				
Total size:				2186mm x 2500mm
<small>Main office: Luisi Hog 2221 - 1200 Dierbelle - +32 (0)20 12 88 30</small>		<small>Handling: Kempkensweg 11</small>		<small>www.steelit.be</small>

REQUEST YOUR QUOTATION ONLINE

WITH OUR STEELIT® CONFIGURATOR

Visit us at **steelit.be**



Notice the difference



steelit.be