

5

Installation Completed



After installation, turn over the screen to check, especially the four corners. If the four corners are not flat (this is normal), please uninstall the outer frame and readjust the springs and fabric at the corners.



Note: As PET fabric is made of special material, it is easy to damage. Please do not fold or press it, to avoid irreversible damage!



There is a small label behind the fabric, to indicate this is the bottom side of the screen, because the upper and bottom side of PET fabric are different.

Warm Prompt: Because special structure of PET fabric, please note the label before mounting.

6

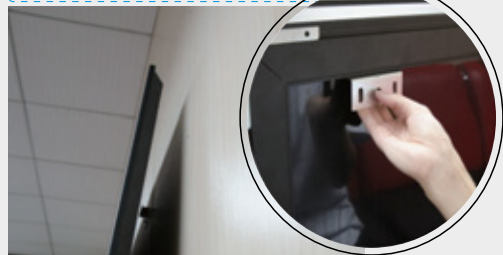
Mounting on the Wall



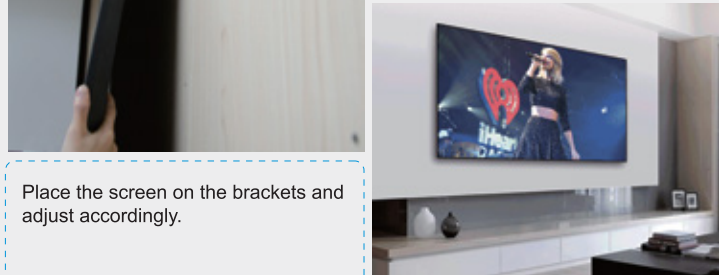
Notice

Note: Because special structure of PET fabric, please note the label before mounting.

Install the two brackets on the wall (ensure the brackets are at the same level).



Finished! ▼



Place the screen on the brackets and adjust accordingly.



Installation Manual of Ultra Thin Frame Screen OPHDST series

1

Clean the floor and check the package

Notice

The floor must be cleaned and without any hard objects (eg. dirt), to avoid screen damage.



Carton Package: Frames and Accessories

Tube Package: Screen Fabric

Note: Some fabric is packaged by tube. Some fabric is packaged together with the frames. It's depended by the fabric material.



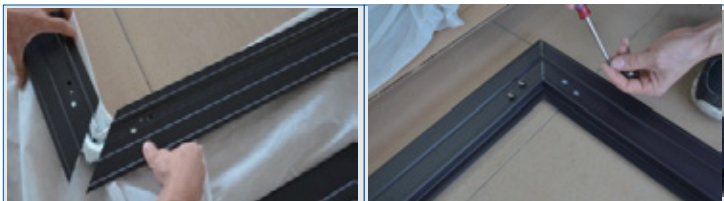
There is yellow labels on every inner packages, to indicate the type of frame/fabric.

2

Install the Inner Frames



Open the package, put the inner frames onto the clean floor.



Insert the corner braces into four corners. Please note the front and back side are different.

Adjust the holes and turn the screws (Do not tighten the screws too tight in this step).



After turning all screws at the four corners, please adjust the junctures of the corners. Hold the frame tightly with one hand and tighten the screws with the other hand. After installing the inner frames, please install the support rods.

Installation of inner frames and support rods has been completed. Put it aside.

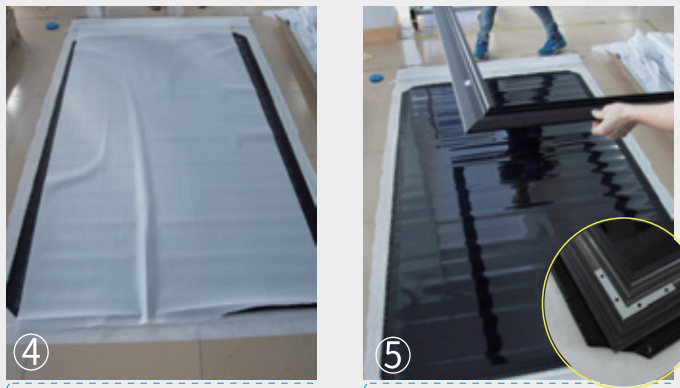
3

Install the Screen Fabric

Put the screen fabric out of the package.



Take off the package lid, pull the fabric out carefully. Note: Do not fold the screen fabric when pulling out to avoid damage!

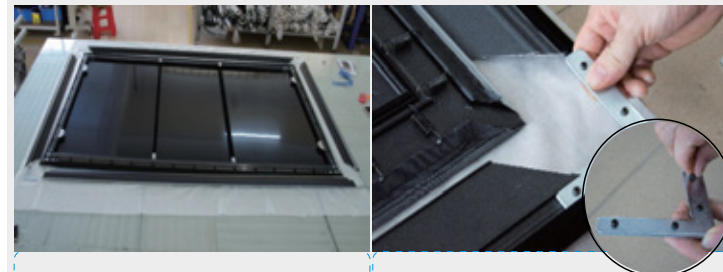


Put the fabric onto the non-woven fabric, with the back side upward.

Put the installed inner frame onto the fabric. Note that the four corners must be aligned to the corner cut.

4

Install the Outer Frame



Place the outer frames properly.

Insert the corner braces into the four corners of the outer frames. Please put the small screws onto the corner braces before inserting them into the frames.

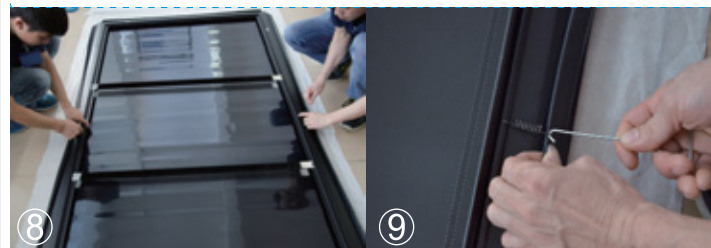


Cover the inner frame with the outer frame. Hold the inner frame and outer frame at the same time, press them together until hear a "click".

Tighten the small screws on the corner braces. Check the junctures of four corners. If the junctures are big, please adjust the junctures before tightening the screws.



Insert the support bars into the four sides of the fabric.



Hook the springs. Note: hook the springs in the middle of the frame, and then the two sides. Please do this by two people at the same time.

Correct Method of Hooking Springs: Hook the spring to the inner frame first, and then hook it to the fabric holes.



After hooking all the springs, turn over the screen to check whether it is flat. If there is some wrinkles, please adjust the springs and the fabric.

Use the silver color springs for higher tension at the corners.