

We or us means ARISIT Pty Ltd / ONE Home Collection 40-50 Mark Anthony Drive, Dandenong South, VIC 3175 and our contact details are set out at the end of this warranty;

You means the purchaser or the original end-user of the Goods. You may be a domestic user or a professional user.

Supplier means the authorised distributor or retailer of the Goods that sold you the Goods in Australia and New Zealand; and

Goods means the product or equipment which was accompanied by this warranty and purchased in Australia and New Zealand.

For Australia:

Our Goods come with guarantees that cannot be excluded under the Australian Consumer Law. You are entitled, subject to the provisions of the Australian Consumer Law, to a replacement or refund for a major failure and for compensation for any other reasonably foreseeable loss or damage. You are also entitled, subject to the provisions of the Australian Consumer Law, to have the Goods repaired or replaced if the goods fail to be of acceptable quality and the failure does not amount to a major failure. This is not a complete statement of your legal rights as a consumer

For New Zealand:

Our Goods come with guarantees that cannot be excluded under the Consumer Guarantees Act 1993. This guarantee applies in addition to the conditions and guarantees implied by that legislation.

The Warranty

ARISIT Pty Ltd / ONE Home Collection sells its products with the intent that they are free of defects in manufacture and workmanship under normal use and service. In the unlikely event that your product proves to be faulty within 1 year from the date of purchase due to workmanship or materials only, we will replace it at our own expense, subject to the terms and conditions of this guarantee. The warranty period is limited to 3 months from the date of purchase for products used commercially/professionally.

Terms and Conditions:

In addition to the rights and remedies that you have under the Australian Consumer Law, Consumer Guarantees Act of New Zealand or any other applicable law and without excluding such rights and remedies warranty against defects:

1. The Goods are designed to withstand the rigors of normal household use and are manufactured to the highest standards using the highest quality components. Whilst unlikely, if, during the first 12 months (3 months commercial use) from their date of purchase from the Supplier (Warranty Period), the Goods prove defective by reason of improper workmanship or materials and none of your statutory rights or remedies apply, we will replace the Goods, subject to the terms and conditions of this warranty.
2. We do not have to replace the Goods under this Additional Warranty if the Goods have been damaged due to misuse or abuse, accident, the attachment of any unauthorised accessory, alteration to the product, improper installation, unauthorised repairs or modifications, improper use of electrical/power supply, loss of power, malfunction or damage of an operating part from failure to provide manufactures recommended maintenance, transportation damage, theft, neglect, vandalism, environmental conditions or any other conditions whatsoever that are beyond the control of ARISIT Pty Ltd / ONE Home Collection.
3. This Warranty does not extend to the purchase of used, repaired or second-hand products or to products not imported or supplied by ARISIT Pty Ltd / ONE Home Collection, including but not limited to those sold on offshore internet auction sites.
4. This Warranty extends only to consumers and does not extend to Suppliers
5. Even when we do not have to replace the Goods, we may decide to do so anyway. In some cases, we may decide to substitute the Goods with a similar alternative product of our choosing. All such decisions are at our absolute discretion.
6. This Additional Warranty does not cover items damaged by normal wear and tear including but not limited to chips, scratches, abrasions, discolouration and other minor defects, where the damage has negligible effect on the operation or performance of the Goods.
7. This Additional warranty is limited to replacement or substitution only. As far as the law permits, we will not be liable for any loss or damage caused to property or persons arising from any cause whatsoever and shall have no liability for any incidental, consequential or special damages.
8. This warranty is only valid and enforceable in Australia and New Zealand.

Making a Claim:

In order to claim under this Warranty you must return the Goods to the Supplier (place of purchase) for replacement. If this is not possible, please contact our customer service department at the address below.

- All returned Goods must be accompanied by satisfactory proof of purchase which clearly indicates the name and address of the Supplier, the date and place of purchase and identifies product. It is best to provide an original, legible and unmodified receipt or sales invoice
- You must bear any expense for return of the Goods or otherwise associated with making your claim under this Additional Warranty.

IMPORTANT SAFEGUARDS

WHEN USING ELECTRICAL PRODUCTS, ESPECIALLY WHEN CHILDREN ARE PRESENT, BASIC SAFETY PRECAUTIONS SHOULD ALWAYS BE FOLLOWED, INCLUDING THE FOLLOWING

- Close supervision is necessary when this unit is used by or near children or individuals with certain disabilities.
- NEVER insert pins or other metallic fasteners into the appliance.
- Use this appliance for the intended use as described in this booklet. DO NOT point roller directly at others as there are rotating pieces
- NEVER operate this appliance if it is not working properly, if it has been dropped or damaged, or dropped into water.
- Excessive use without maintenance could lead to congestion. Should this occur, please thoroughly clean appliance and roller as suggested in Cleaning & Maintenance.
- NEVER drop or insert any large objects when in use.
- DO NOT use on a soft surface, as a bed, where openings may be blocked.
- DO NOT use outdoors.
- DO NOT attempt to repair, disassemble or modify the appliance. There are no user serviceable parts.
- This product is not waterproof.
- DO NOT place or store appliance where it can fall or be pulled into a bath or sink.
- DO NOT place in or drop into water or other liquid.
- DO NOT reach for an appliance that has fallen in water or other liquids.
- Avoid sharp objects to prevent damage to the attachment.
- Detach the attachment when not in use.
- Keep away from heated surfaces.
- This appliance is not a toy. Keep away from children

SPECIFICATIONS

- Compatible with: V7, V8, V10, V11, & V15
- Unit Size: Height: 6.5cm Width: 25.5cm
- Package Size: 26.5 x 28.6 x 8cm
- LED Headlights
- Toggle Lock
- Nylon Strips
- Washable Roller
- ±90° swivel



OPDA001

SOFT ROLLER HEAD

INSTRUCTION MANUAL



OPDA001

PACKING LIST



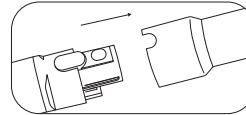
Soft Roller Head



Instruction Manual

INSTALLATION

Compatibility: V7, V8, V10, V11, V15



Attach the roller head to the end of the vacuum until it clicks.

Pick up large pieces in the area before operating.



READ ALL INSTRUCTIONS BEFORE USE. SAVE THESE INSTRUCTIONS FOR FUTURE REFERENCE. FOR HOUSEHOLD USE ONLY.

SAFETY INSTRUCTIONS

TO ENSURE PROPER OPERATION OF THIS ROLLER, PLEASE READ THIS INSTRUCTION MANUAL CAREFULLY BEFORE USING THE ROLLER AND KEEP IT FOR FURTHER REFERENCE.

WARNING

- This attachment is not a toy, keep out of reach of children.
- Please check the attachment and inside before attaching to your vacuum. Do not use if there is any damage.
- Make sure there are no large pieces that may clog the attachment and your vacuum.
- Pick up large pieces off the ground before cleaning the area.
- DO NOT place the attachment where it can easily fall.
- DO NOT attempt to disassemble, repair, or modify the attachment by yourself to avoid accidents.

CAUTION

- Avoid sharp objects to prevent damage to the attachment.
- Dry the roller completely before reattaching to the main unit
- Use and store the attachment in places out of reach of children.
- This attachment is only to be used with the compatible vacuums.

ARISIT Pty Ltd PRODUCT WARRANTY AUSTRALIA & NEW ZEALAND

AUSTRALIA - Contact Arisit by telephone in Melbourne, Australia on 1300 726 219, or by emailing productreturns@arisit.com or by letter to

ATTN: Product Returns, Arisit Pty Limited, 40-50 Mark Anthony Drive, Dandenong South, VIC 3175 and submit such details of your claim as Arisit requires.

NEW ZEALAND - Contact Arisit by telephone in Auckland on (+64) 9 306 1020, or by e-mailing sales2@arisit-co.nz or by letter to

ATTN: Product Returns, Arisit Pty Limited, 1a Howe Street, Newton, Auckland 1145, NZ and submit such details of your claim as Arisit requires.

Deliver the product(s) to the address above or the original place of purchase. You must bear any expense you incur in claiming this warranty.

Notice to Australian Consumers

Our goods come with guarantees that cannot be excluded under the Australian Consumer Law. You are entitled to a replacement or refund for a major failure and compensation for any other reasonably foreseeable loss or damage. You are also entitled to have the goods repaired or replaced if the goods fail to be of acceptable quality and the failure does not amount to a major failure.

Notice to New Zealand Consumers

Our goods come with guarantees that cannot be excluded under the Consumer Guarantees Act 1993. This warranty should not be construed as any attempt to contract out of or exclude any or the guarantees available to any consumers under this Act provided that you agree that the provisions of the Consumer Guarantees Act 1993 will not apply if you are acquiring the goods for the purpose of a business.

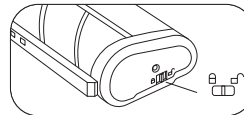
Arisit Pty Limited Australia, 40-50 Mark Anthony Drive, Dandenong South, VIC 3175 Australia Tel: 1300 762 219

Arisit Pty Limited NZ, 1a Howe Street, Newton, Auckland, 1145 NZ, Tel: (+64) 9 306 1020

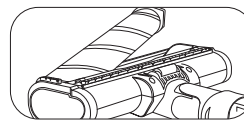
©2022 ONE PRODUCTS
20218 Hamilton Avenue
Torrance, CA 90502, USA

Made in China

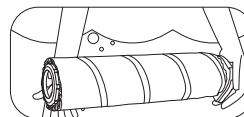
CLEANING & MAINTENANCE



Unlock the roller from the side toggle switch



Remove the soft roller and clean the inside from dust and dirt with a damp towel



Hand wash **ONLY** the roller in water and detergent. Air dry completely before reattaching.

SPECIAL FEATURE



Picks up dirt, dust, and bacteria that are on the floor.



Keep your hard floors safe with the nylon brushes, soft roller, and wheels to prevent scratches and other blemishes.



LED headlights to spot dirt in darker areas of your floor.



Washable roller to make it last.



Toggle lock to detach the roller with ease.



±90° swivel for easy maneuvering