

## Safety Instructions







Made in China

- 1 Always keep away from water.
- 1 Do not place or store appliance where it can fall or be pulled into a tub or sink. If the appliance falls into water, DO NOT REACH INTO THE WATER.
- 1 Do not use while bathing or in the shower.
- 1 Close supervision is necessary when any appliance is used by or near children or people with a physical/mental disability.
- 1 Do not operate this appliance if the appliance malfunctions or has been damaged in any manner. No repairs should be attempted by the consumer.
- 1 Use appliance only for intended use as described in this instruction manual.
- 1 Be sure mirror is not in a position where it can reflect sunlight.

## Storage Instructions

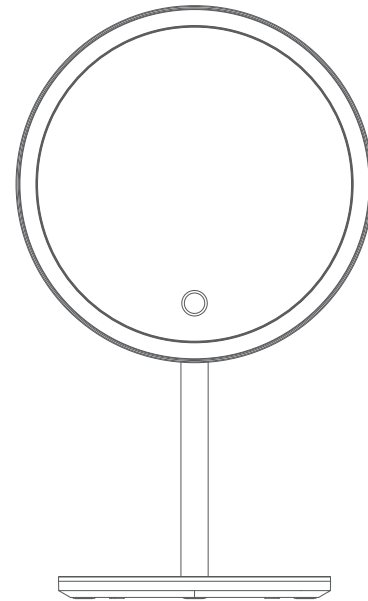
- 1 Turn switch to OFF when not in use.
- 2 Be sure direct sunlight does not strike mirror when left unattended.
- 3 Place in cool, dry area out of reach of children, where mirror will not be damaged.

## Special Feature

-  High definition makeup mirror
-  This lighted makeup mirror uses built-on Energy Saving LED bulbs. Replacement bulbs are not required.
-  Built-in touch sensor switch
-  Free to switch between warm, natural and cool light
-  360° Free rotating magnetic ball
-  Save space with the base storage compartment

## USB RECHARGEABLE LED LIGHTED MAKEUP MIRROR

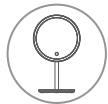
ONE  
HOME COLLECTION



OPCM005

For your safety and continued enjoyment of this product, Please read the instructions carefully before using.

## What's in the box



LED makeup mirror  
① x



USB Charging Cable  
① x



Product Instruction manual  
① x

## How to charge the mirror

Note: Before charging the mirror, make sure the light is OFF

- 1 Using the USB cable provided, connect the USB port to a 5v power supply or connect to your computer
- 2 Once properly connected, the indicator will light up. Once the mirror is fully charged, the indicator will turn blue

## ARISIT Pty Ltd PRODUCT WARRANTY AUSTRALIA & NEW ZEALAND

**AUSTRALIA** - Contact Arisit by telephone in Melbourne, Australia on 1300 726 219, or by emailing [productreturns@arisit.com](mailto:productreturns@arisit.com) or by letter to

**ATTN:** Product Returns, Arisit Pty Limited, 40-50 Mark Anthony Drive, Dandenong South, VIC 3175 and submit such details of your claim as Arisit requires.

**NEW ZEALAND** - Contact Arisit by telephone in Auckland on (+64) 9 306 1020, or by e-mailing [sales2@arisit.co.nz](mailto:sales2@arisit.co.nz) or by letter to

**ATTN:** Product Returns, Arisit Pty Limited, 1a Howe Street, Newton, Auckland 1145, NZ and submit such details of your claim as Arisit requires.

Deliver the product(s) to the address above or the original place of purchase. You must bear any expense you incur in claiming this warranty.

### Notice to Australian Consumers

Our goods come with guarantees that cannot be excluded under the Australian Consumer Law. You are entitled to a replacement or refund for a major failure and compensation for any other reasonably foreseeable loss or damage. You are also entitled to have the goods repaired or replaced if the goods fail to be of acceptable quality and the failure does not amount to a major failure.

### Notice to New Zealand Consumers

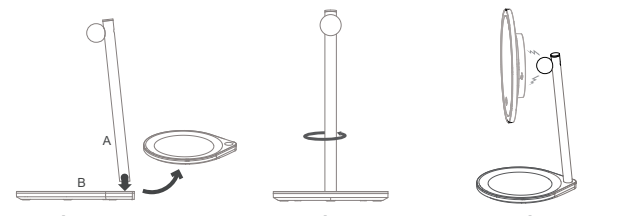
Our goods come with guarantees that cannot be excluded under the Consumer Guarantees Act 1993. This warranty should not be construed as any attempt to contract out of or exclude any of the guarantees available to any consumers under this Act provided that you agree that the provisions of the Consumer Guarantees Act 1993 will not apply if you are acquiring the goods for the purpose of a business.

Arisit Pty Limited Australia, 40-50 Mark Anthony Drive, Dandenong South, VIC 3175 Australia Tel: 1300 762 219

Arisit Pty Limited NZ, 1a Howe Street, Newton, Auckland, 1145 NZ, Tel: (+64) 9 306 1020

©2021 ONE PRODUCTS  
20218 Hamilton Avenue  
Torrance, CA 90502, USA

## How to Assemble



Insert A into B

Gently turn the stand counter-clockwise

Attach the main mirror to magnetic ball

## Operating Instructions



The mirror is powered by 2000mAh li-polymer battery, please make sure it is fully charged.



Place finger on the power switch on the mirror panel, the mirror will be lighted up with LED lights circle.



Remove finger from the power switch, tap again, and lights will turn off



Tap to switch between warm, neutral, and cool lights



Hold down for 3 seconds to adjust the brightness to reach your desired liking

We or us means ARISIT Pty Ltd / ONE Home Collection 40-50 Mark Anthony Drive, Dandenong South, VIC 3175 and our contact details are set out at the end of this warranty;

You means the purchaser or the original end-user of the Goods. You may be a domestic user or a professional user.

Supplier means the authorised distributor or retailer of the Goods that sold you the Goods in Australia and New Zealand; and

Goods means the product or equipment which was accompanied by this warranty and purchased in Australia and New Zealand.

**For Australia:**

Our Goods come with guarantees that cannot be excluded under the Australian Consumer Law. You are entitled, subject to the provisions of the Australian Consumer Law, to a replacement or refund for a major failure and for compensation for any other reasonably foreseeable loss or damage. You are also entitled, subject to the provisions of the Australian Consumer Law, to have the Goods repaired or replaced if the goods fail to be of acceptable quality and the failure does not amount to a major failure. This is not a complete statement of your legal rights as a consumer

**For New Zealand:**

Our Goods come with guarantees that cannot be excluded under the Consumer Guarantees Act 1993. This guarantee applies in addition to the conditions and guarantees implied by that legislation.

**The Warranty**

ARISIT Pty Ltd / ONE Home Collection sells its products with the intent that they are free of defects in manufacture and workmanship under normal use and service. In the unlikely event that your product proves to be faulty within 1 year from the date of purchase due to workmanship or materials only, we will replace it at our own expense, subject to the terms and conditions of this guarantee. The warranty period is limited to 3 months from the date of purchase for products used commercially/professionally.

**Terms and Conditions:**

In addition to the rights and remedies that you have under the Australian Consumer Law, Consumer Guarantees Act of New Zealand or any other applicable law and without excluding such rights and remedies warranty against defects:

1. The Goods are designed to withstand the rigors of normal household use and are manufactured to the highest standards using the highest quality components. Whilst unlikely, if, during the first 12 months (3 months commercial use) from their date of purchase from the Supplier (Warranty Period), the Goods prove defective by reason of improper workmanship or materials and none of your statutory rights or remedies apply, we will replace the Goods, subject to the terms and conditions of this warranty.
2. We do not have to replace the Goods under this Additional Warranty if the Goods have been damaged due to misuse or abuse, accident, the attachment of any unauthorised accessory, alteration to the product, improper installation, unauthorised repairs or modifications, improper use of electrical/power supply, loss of power, malfunction or damage of an operating part from failure to provide manufactures recommended maintenance, transportation damage, theft, neglect, vandalism, environmental conditions or any other conditions whatsoever that are beyond the control of ARISIT Pty Ltd / ONE Home Collection.
3. This Warranty does not extend to the purchase of used, repaired or second-hand products or to products not imported or supplied by ARISIT Pty Ltd / ONE Home Collection, including but not limited to those sold on offshore internet auction sites.
4. This Warranty extends only to consumers and does not extend to Suppliers
5. Even when we do not have to replace the Goods, we may decide to do so anyway. In some cases, we may decide to substitute the Goods with a similar alternative product of our choosing. All such decisions are at our absolute discretion.
6. This Additional Warranty does not cover items damaged by normal wear and tear including but not limited to chips, scratches, abrasions, discolouration and other minor defects, where the damage has negligible effect on the operation or performance of the Goods.
7. This Additional warranty is limited to replacement or substitution only. As far as the law permits, we will not be liable for any loss or damage caused to property or persons arising from any cause whatsoever and shall have no liability for any incidental, consequential or special damages.
8. This warranty is only valid and enforceable in Australia and New Zealand.

**Making a Claim:**

In order to claim under this Warranty you must return the Goods to the Supplier (place of purchase) for replacement. If this is not possible, please contact our customer service department at the address below.

- All returned Goods must be accompanied by satisfactory proof of purchase which clearly indicates the name and address of the Supplier, the date and place of purchase and identifies product. It is best to provide an original, legible and unmodified receipt or sales invoice
- You must bear any expense for return of the Goods or otherwise associated with making your claim under this Additional Warranty.