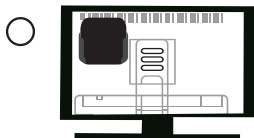


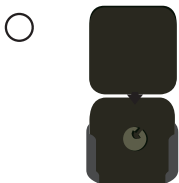
Mounting system features:



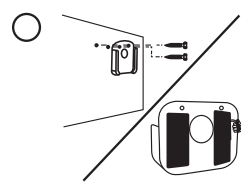
Function One: Buckle on the protective bracket on the TV cabinet platform.



Function Two: Remove the film to access the double sided adhesive and attach to the back of the TV



Function Three: Slide the Apple TV into the bracket to act as support to protect the base



Function Four: Screw or stick the bracket to the wall or any other desired area

Product list

A) Screw x2



B) Plastic Expansion x2



C) Velcro x2

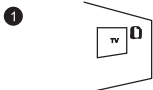
Velcro

D) Mounting System Kit



Installation Steps

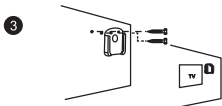
Method 1 Screw on



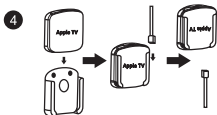
Mark the wall using the 2 tiny holes on the mount



Use a drill to mark the wall



Place the mount by using the provided screws



Slide the Apple TV into the mount

Installation Steps

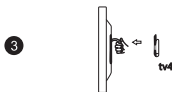
Method 2 Stick On



Peel a portion of the sticker on the velcro



The sticker is placed on the back of the Apple TV mount as shown.



Another posted magic TV/wall or any place, then confirm the position. Remove velcro film and stick on the back.

