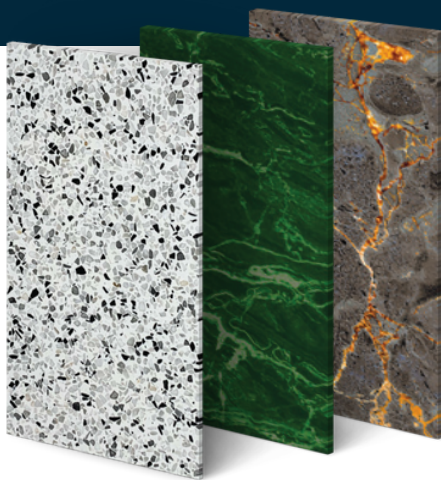


BIPV: Changing the Future of Urban Energy

Move your construction project towards net zero with Building Integrated Photovoltaics (BIPV).



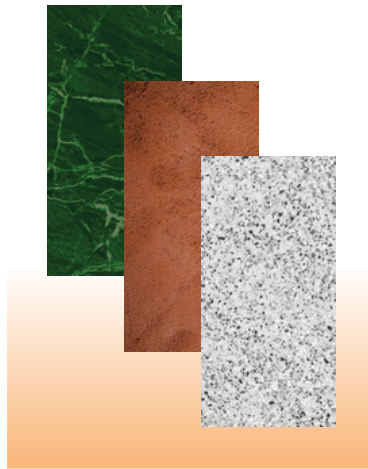
In a world grappling with the urgent need to combat global warming, Building-Integrated Photovoltaics (BIPV) emerge as a beacon of hope. There's never been a better time to utilise these innovative products, which seamlessly blend solar energy generation with architectural design, offering a compelling solution to mitigate the ever-escalating climate crisis.

At Alpha Solar Tech, our BIPV products revolutionise the way we generate and utilise energy within our built environments. By harnessing the power of the sun while enhancing the aesthetics and functionality of structures, BIPV transform ordinary buildings into eco-friendly powerhouses. With BIPV, every sunlit surface becomes a potential source of clean, renewable energy. Whether integrated into rooftops, facades, or windows, these cutting-edge solutions enable us to reduce our reliance on fossil fuels, lower carbon emissions, and decrease our environmental footprint.

**FUTURE-FORWARD
INNOVATION**

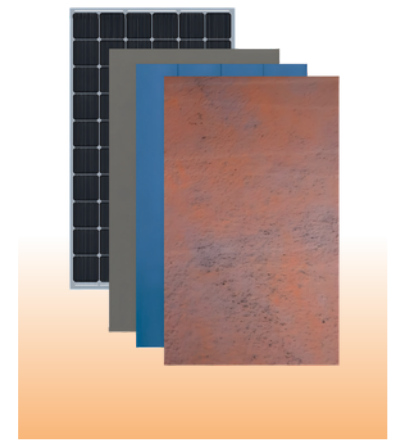
alphasolartech.com

+61 (08) 6239 0230
1/93A Leach Hwy, Kewdale
Western Australia



Coloured BIPV Modules

Our colour 1200mmx600mm and 1780mmx1180mm BIPV modules can be printed to mimic building materials such as wood, brick and marble or to display imagery like company logos.



Rooftop Solar Panels

These panels can be customised to match your roof color, providing both energy efficiency and aesthetic appeal. This efficient technology offers high energy production while maintaining a great appearance.



There are no limitations to where our panels can be installed. From walls to sidewalks, balconies to bridges we can turn any space into a stylish solar farm.

- Warranty – up to 25 years
- Reduce grid connection infrastructure
- Reduce onsite power costs on average by 50%
- Reduce greenhouse gases and move towards a net zero future



Coloured Solar Rooftiles

Our 1260mmx480mm and 630mm x480mm BIPV roof tiles perfectly complement slate and tiled roofs or can replace the roof itself. Numerous colour variations are offered for AST roof tiles. Waterproof and backed by an extended Warranty



Solar Glass Panels

Our Cd/Te thin film 40% semi-transparent solar glass windows and facades provide excellent power (87Wp/m²) reducing greenhouse gases, saving on energy costs, providing attractive ROI, offer great visibility and perform just like a standard tinted window.



Semi-Transparent Frameless Solar Balustrades

Can be customised with varying degrees of transparency and color to meet specific design requirements. They come with two stainless steel spigots, with one housing the junction box, and help balance energy generation with desired levels of natural light transmission.