



**Customer:** Green Garden Gold  
**Customer Sample ID:** Doggy Be Good Oil Drops  
**Laboratory Number:** 20G0007-29  
**Servings per Container:** 30  
**Density:** 0.9632



## Cannabinoid Profile

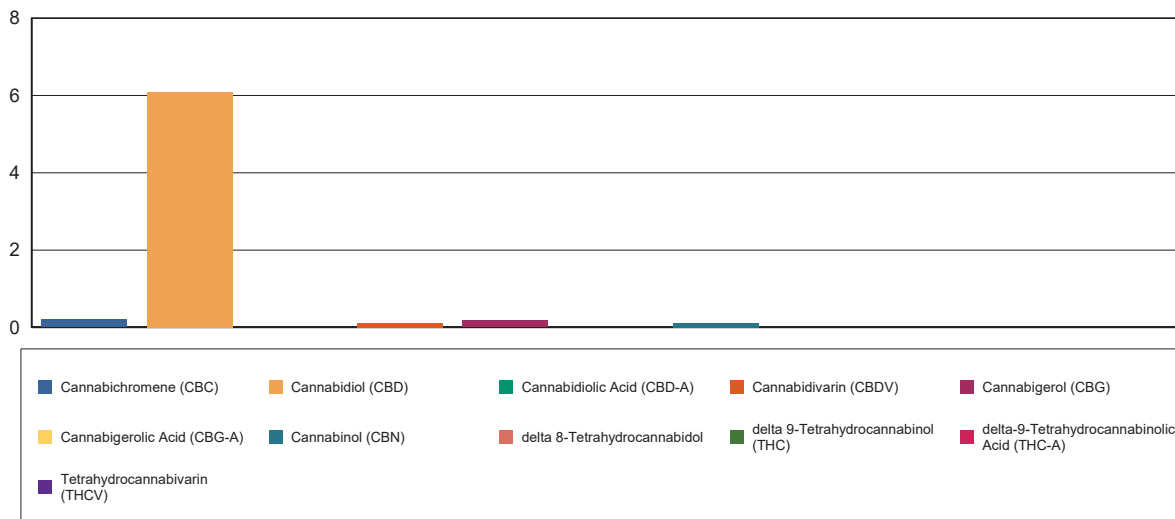
**Extraction Technician:** DF  
**Analytical Chemist:** CB

Extraction Date(s)	Analysis Date(s)
7/1/2020	7/2/2020

Cannabinoids (HPLC)		Results		
	LOD (mg/mL)	%	mg/mL	mg/bottle
Cannabidiarin (CBDV)		0.01	0.110	3.30
Cannabidiolic Acid (CBD-A)	<0.080			
Cannabigerolic Acid (CBG-A)	<0.080			
Cannabigerol (CBG)		0.02	0.166	4.99
Cannabidiol (CBD)		0.61	6.09	183
Tetrahydrocannabivarin (THCV)	<0.080			
Cannabinol (CBN)		0.01	0.112	3.37
delta 9-Tetrahydrocannabinol (THC)	<0.080			
delta 8-Tetrahydrocannabidol	<0.080			
Cannabichromene (CBC)		0.02	0.200	6.00
delta-9-Tetrahydrocannabinolic Acid (THC-A)	<0.080			
Cannabinoids Total		%	mg/mL	
Max Active THC		0.00	0.00	
Max Active CBD		0.61	6.09	
T.Active Cannabinoids		0.66	6.57	
Total Cannabinoids		0.67	6.68	

Following USDA guidelines on uncertainty, Altitude Consulting's uncertainty are calculated for CBDa and CBD at +/- 4%.  
 The uncertainty for THCa and THC are +/- 5%. This implies the range for a 10% value of CBD to be 9.6-10.4%. The  
 uncertainty range for a 0.30% value of THC would be 0.28-0.32%.

### Cannabinoid (mg/mL)



Reporting Limits will vary based on sample extraction weight used for the analysis.

Altitude Consulting, LLC utilizes NIST traceable Reference Standards and Certified Reference Material to calibrate analytical instruments along with proven analytical methods.  
 The methods are applied in the most ethical manner following good laboratory practice guidelines. The results of this report are based solely on the sample submitted and cannot be reproduced.