



**Customer:** Green Garden Gold  
**Customer Sample ID:** MedPac 6000mg Original  
**Laboratory Number:** 22G0007-02  
**Servings per Container:** 120  
**Density:** 0.9632



## Cannabinoid Profile

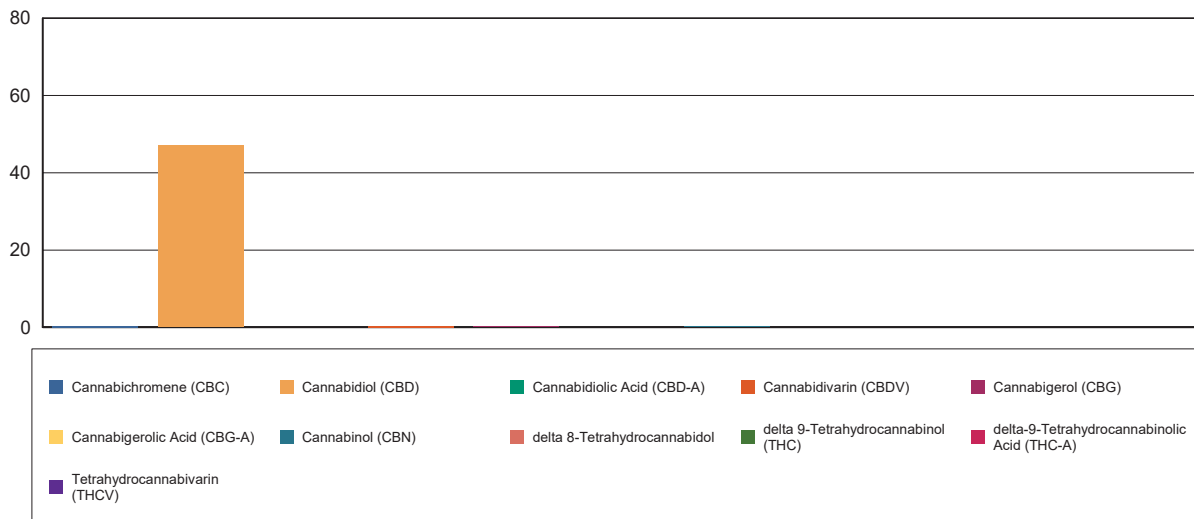
**Extraction Technician:** DF  
**Analytical Chemist:** CB

Extraction Date(s)	Analysis Date(s)
10/28/2022	11/1/2022

Cannabinoids (HPLC)		Results		
	LOD (mg/mL)	%	mg/mL	mg/bottle
Cannabidivarin (CBDV)		0.03	0.347	41.7
Cannabidiolic Acid (CBD-A)	<0.090			
Cannabigerolic Acid (CBG-A)	<0.090			
Cannabigerol (CBG)		0.01	0.143	17.2
Cannabidiol (CBD)		4.70	47.0	5640
Tetrahydrocannabivarin (THCV)	<0.090			
Cannabinol (CBN)		0.02	0.199	23.9
delta 9-Tetrahydrocannabinol (THC)	<0.090			
delta 8-Tetrahydrocannabidol	<0.090			
Cannabichromene (CBC)		0.04	0.374	44.9
delta-9-Tetrahydrocannabinolic Acid (THC-A)	<0.090			
Cannabinoids Total		%	mg/mL	
Max Active THC		0.00	0.00	
Max Active CBD		4.70	47.00	
T.Active Cannabinoids		4.77	47.70	
Total Cannabinoids		4.81	48.10	

Following USDA guidelines on uncertainty, Altitude Consulting's uncertainty are calculated for CBDa and CBD at +/- 4%.  
 The uncertainty for THCa and THC are +/- 5%. This implies the range for a 10% value of CBD to be 9.6-10.4%. The uncertainty range for a 0.30% value of THC would be 0.28-0.32%.

### Cannabinoid (mg/mL)



Reporting Limits will vary based on sample extraction weight used for the analysis.

Altitude Consulting, LLC utilizes NIST traceable Reference Standards and Certified Reference Material to calibrate analytical instruments along with proven analytical methods.  
 The methods are applied in the most ethical manner following good laboratory practice guidelines. The results of this report are based solely on the sample submitted and cannot be reproduced.