

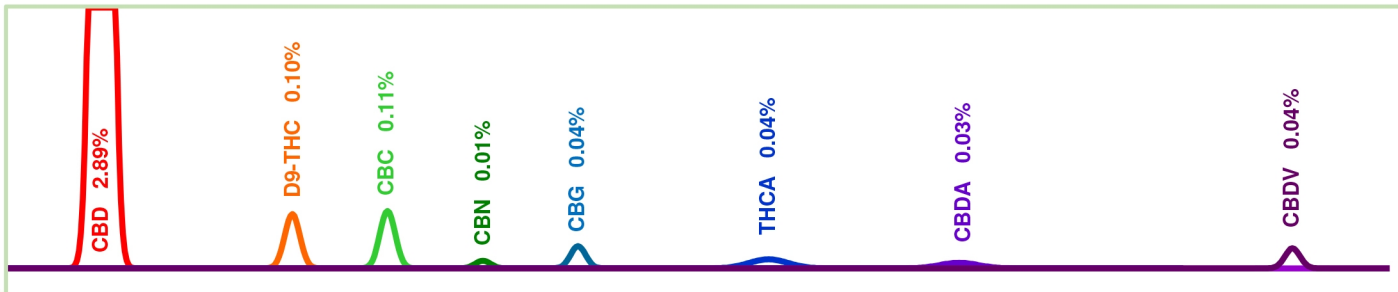
Test Certificate No.: 151-008779-r  
Sample: GGG Gold 501  
Matrix: Tincture



Date Received: 4/20/2016  
Test Date: 4/20/2016  
Technician: LA/JFD

**CANNABINOID PROFILE [Procedure WI-10-04]:**

This test method was performed in accordance with the requirements of ISO/IEC 17025. These results relate only to the test article listed in this report. Reports may not be reproduced except in their entirety.

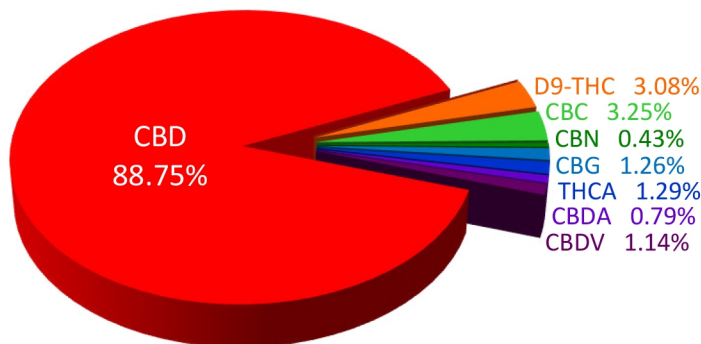


**Total Cannabinoids Measured**

Test	Weight %	Conc.
CBD	2.89%	36.94 mg/mL
THCV	< 0.01%	< 0.01 mg/mL
Δ9-THC	0.10%	1.28 mg/mL
CBC	0.11%	1.35 mg/mL
CBN	0.01%	0.18 mg/mL
CBG	0.04%	0.53 mg/mL
THCA	0.04%	0.54 mg/mL
CBDA	0.03%	0.33 mg/mL
CBGA	< 0.01%	< 0.01 mg/mL
CBDV	0.04%	< 0.01 mg/mL
<b>Max THC</b>	<b>0.14%</b>	<b>1.75 mg/mL</b>
<b>Max CBD</b>	<b>2.92%</b>	<b>37.22 mg/mL</b>
<b>Total Active</b>	<b>3.19%</b>	<b>40.75 mg/mL</b>
<b>Total</b>	<b>3.26%</b>	<b>41.62 mg/mL</b>

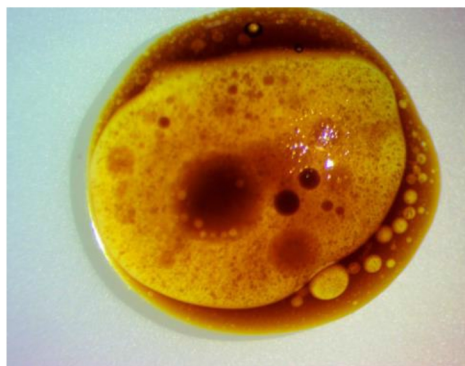
**Distribution of Cannabinoids**

- CBD
- THCV
- D9-THC
- CBC
- CBN
- CBG
- THCA
- CBDA
- CBGA
- CBDV



**VISUAL AND MICROSCOPIC INSPECTION [Procedure WI-10-03]:**

Inspection Comments: Significant separation and inhomogeneity observed.



<b>ProVerde Laboratories, Inc.</b> 420 Fortune Blvd. Milford, MA 01757 617.221.3356	Christopher Hudalla, CSO	Date
		4/22/2016