

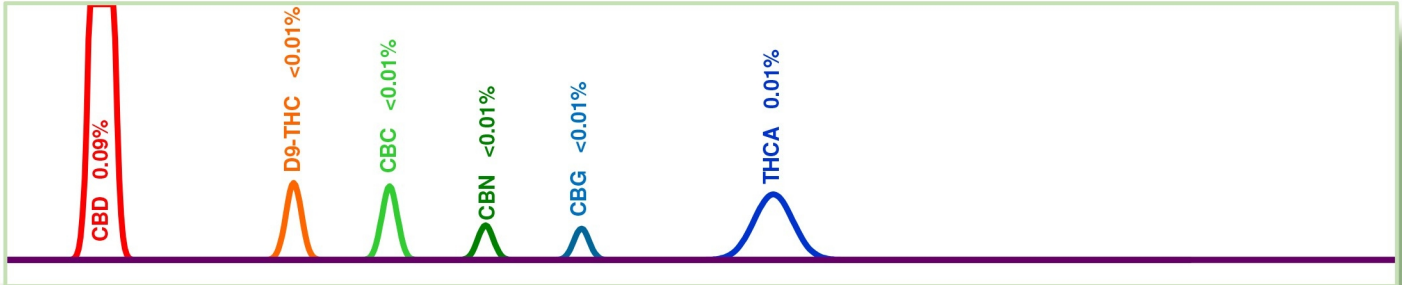
Test Certificate No.: 11498-2\_CN  
Sample: GGG Hemp Oil Salve+CBD  
Matrix: Topical (retest)



Date Received: 8/25/2016  
Test Date: 9/1/2016  
Technician: LA/JFD

**CANNABINOID PROFILE [Procedure WI-10-04]:**

This test method was performed in accordance with the requirements of ISO/IEC 17025. These results relate only to the test article listed in this report. Reports may not be reproduced except in their entirety.

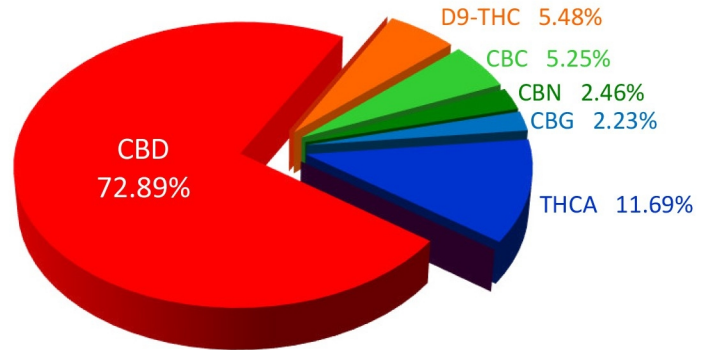


**Total Cannabinoids Measured**

Test	Weight %	Conc.
CBD	0.09%	0.92 mg/g
THCV	< 0.01%	< 0.10 mg/g
Δ9-THC	< 0.01%	0.07 mg/g
CBC	< 0.01%	0.07 mg/g
CBN	< 0.01%	0.03 mg/g
CBG	< 0.01%	0.03 mg/g
THCA	0.01%	0.15 mg/g
CBDA	< 0.01%	< 0.10 mg/g
CBGA	< 0.01%	< 0.10 mg/g
CBDV	< 0.01%	< 0.10 mg/g
<b>Max THC</b>	0.02%	0.20 mg/g
<b>Max CBD</b>	0.09%	0.92 mg/g
<b>Total Active</b>	0.11%	1.11 mg/g
<b>Total</b>	0.13%	1.26 mg/g

- CBD
- THCV
- D9-THC
- CBC
- CBN
- CBG
- THCA
- CBDV
- CBDA
- CBGA
- CBDV

**Distribution of Cannabinoids**



**VISUAL AND MICROSCOPIC INSPECTION [Procedure WI-10-03]:**

Inspection Comments: None



<b>ProVerde Laboratories, Inc.</b> 420 Fortune Blvd. Milford, MA 01757 617.221.3356	Christopher Hudalla, CSO	<b>Date</b>
	<i>Christopher Hudalla</i>	9/3/2016