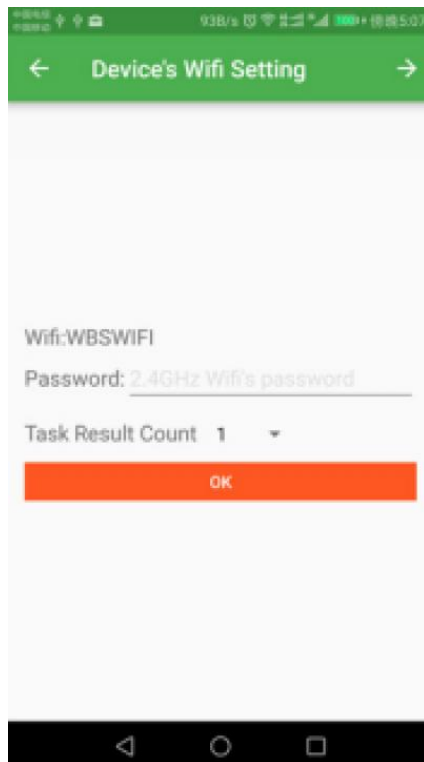


# TINA2 3D Printer Printing by Poloprint APP

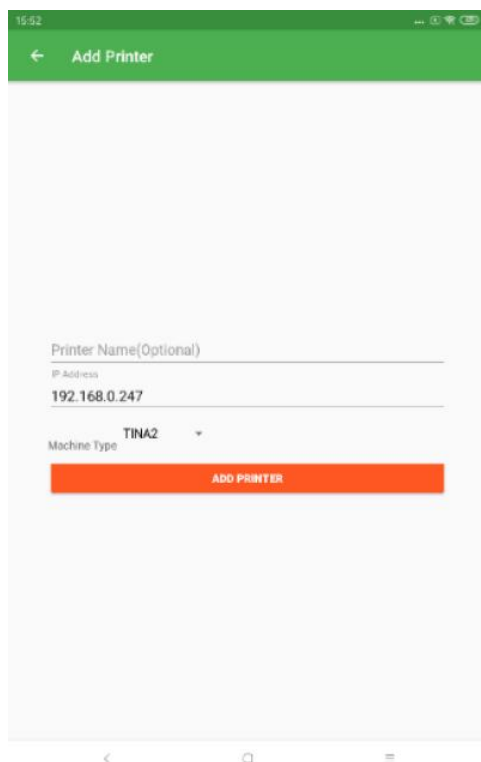
1.Go to the menu bar and click : Control Interface - Network Settings



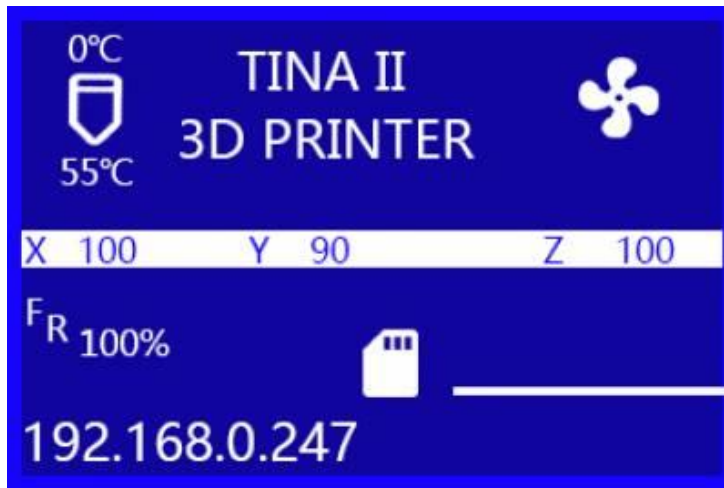
## 2. Get into poloprint APP, choose 'device's wifi setting'



It will show the IP address in the APP

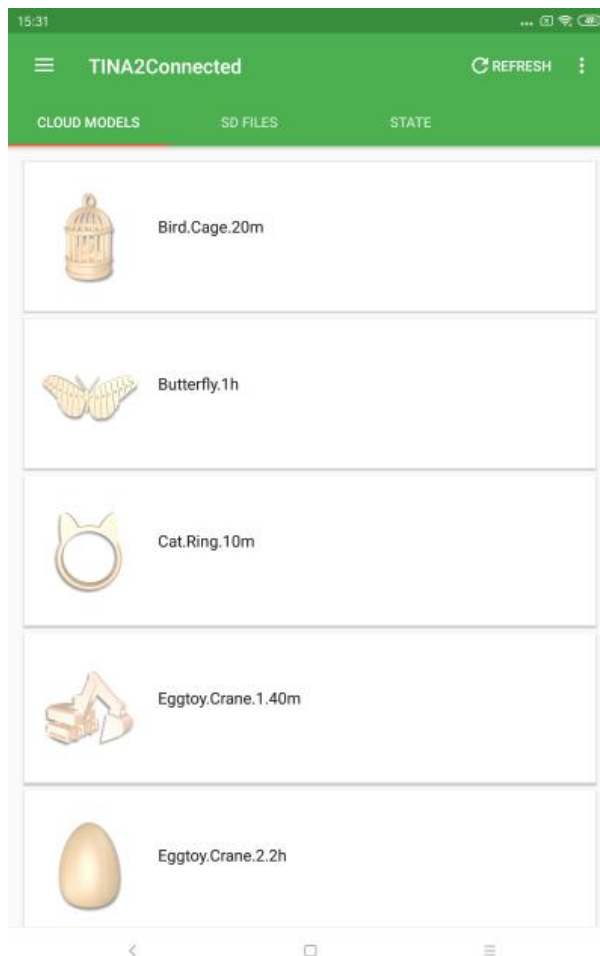


You can also see the IP address on the screen of the printer

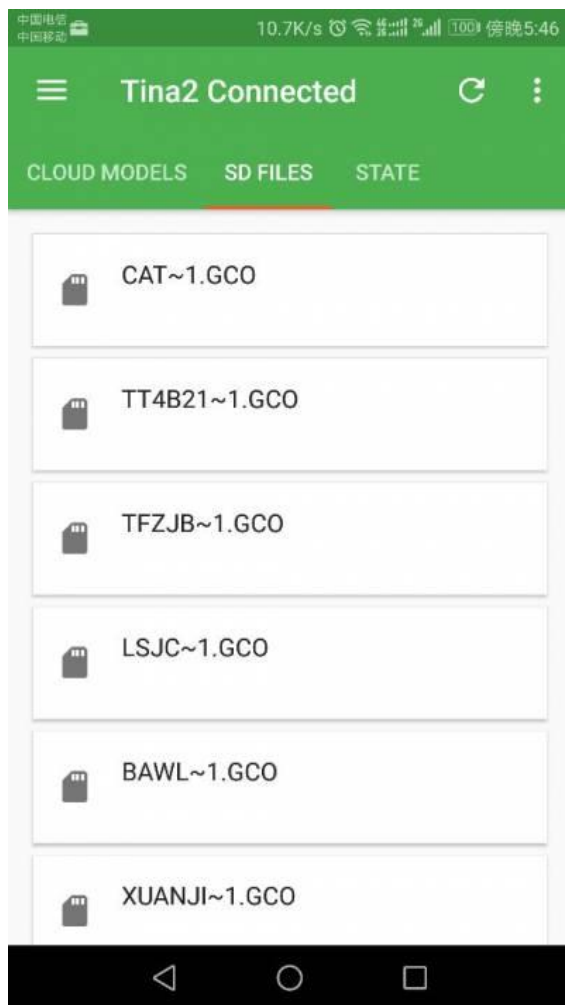


### 3.Printing via APP

The APP main interface displays the cloud model file for the user to select the model to be printed. After selecting the model to be printed, click the model icon, the print button will appear in the lower right corner, and you can download and upload the model for printing.



Print the Gcode-file in TF card via the app



#### 4.Printer control and Management

Poloprint can control and manage your printers.

