

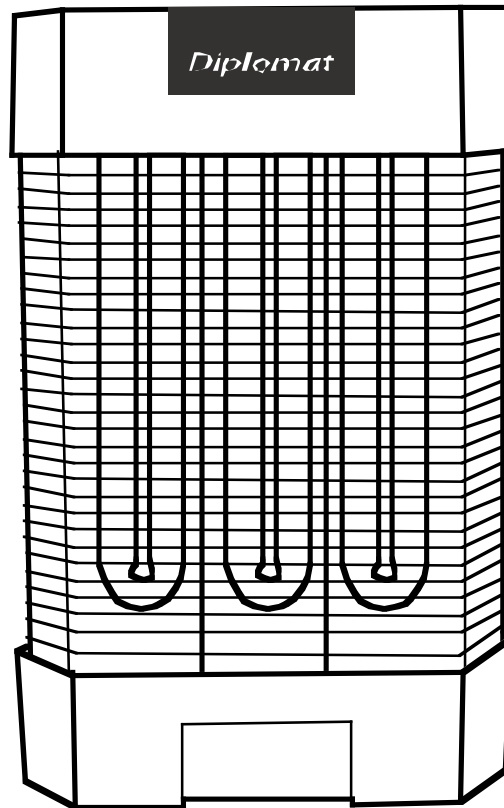
MODELS

Flowtron Diplomat FC-7800C

Galaxie GL-4300C



OWNER'S MANUAL



OPERATION • INSTALLATION • PARTS LIST

**FOR BEST RESULTS, READ THIS MANUAL BEFORE INSTALLING
YOUR NEW ELECTRONIC FLY CONTROL UNIT**

ONE YEAR LIMITED WARRANTY

Flowtron/Galaxie, warrants your electronic Fly Control unit to be free from defects in materials or workmanship under normal use and service for one year from date of the original purchase. All parts, except for burned out bulbs which are defective, will be repaired free of charge. Any implied warranties, including the implied warranty of merchantability are also limited in duration to the one year period from the original purchase date.

The provisions of this warranty shall not apply to any Fly Control unit which has been subject to misuse, neglect or accident, nor which is used for a purpose for which it is not designed, or which shall have been repaired or altered in any way as to adversely affect its performance and reliability. Service by unauthorized parties voids your warranty.

Flowtron neither assumes nor authorizes any person to assume for it any other liability in connection with its products. No responsibility is assumed for any consequential damages that may result from the use of a Flowtron product, nor for damages due to accident, abuse, lack of responsible care, the affixing of any unauthorized attachment, loss of parts or subjecting this unit to any but the specified voltage. Some states do not allow the exclusion or limitation of incidental or consequential damages, so the above limitation or exclusion may not apply to you.

If the unit fails to operate during the warranty period, send the product along with purchase receipt showing purchase date and description to: Flowtron Service Center, 15 Highland Ave., Malden, MA 02148. Transportation costs for returning any defective product are the responsibility of the consumer.

This warranty gives you specific legal rights and may also have other rights which vary from state to state.

OPERATION:

The combination of 120 watts of black light energy with an exclusive reflector panel and a fly attractant pheromone makes your new fly control unit a powerful device that is ecologically safe, effective and economical to operate.

Flies and other flying insect pests are attracted to the electrically charged inner killing grid by black light with help from our exclusive reflector panel, and our fly sex lure (pheromone) to substantially increase the unit's effectiveness in luring insect pests.

Insects are immediately eliminated as they come into contact with, or pass between the rods of the electrically charged killing grid system, and drop into the sanitary removable insect collection tray.

For best results your fly control unit should operate **24 HOURS A DAY, SEVEN DAYS A WEEK.**

SAFETY:

Rules for Safe Use of Fly Control Unit

1. Install the unit 6 to 8 feet above the ground to prevent children and pets from coming in contact with it.
2. Use grounded 115/120 volt AC outlet and three-wire grounded extension cord. For permanent installation, check local codes and consult an electrician or authoritative instruction book before installing.
3. Never place fingers, hands or insert any objects into the unit while it is connected to an electrical outlet.
4. Always disconnect the unit before servicing, handling or disassembling.
5. Clean dead insects from bottom of unit frequently to reduce risk of fire.
6. Only connect unit to properly grounded outlet.
7. Keep extension cord connections dry and off the ground.
8. Don't abuse power cord. Never carry unit by cord or yank cord to disconnect unit from receptacle.
9. Keep power cord from heat, oil and sharp edges. Repair damaged cords promptly.

CAUTION: This product is intended for indoor use only. To avoid risk of fire or electric shock, do not use where it may be exposed to water or direct sunlight, including roofed but open porches.

PLACEMENT:

Location: Proper placement of your Fly Control unit will enhance its effectiveness, range and safety. For best results, place unit adjacent to entrances, exits or in heavily infested areas away from direct or reflected sunlight.

When installing units in halls, passageways or aisles, maintain a minimum clear width for continuous passage of 36 inches. (Reference: American Disabilities Act.)

Height: Flies generally operate at heights of up to six feet. For best results, fly control units should be placed three to six feet above the floor or higher in locations where temperatures are significantly cooler at the lower heights.

Spacing: Fly control units should be spaced evenly throughout a facility. As a general rule distances between traps should be as follows:

Model FC-7800/GL-430045 Feet apart
(2,000 sq. ft. coverage)

INSTALLATION:

Remove unit from its carton and insure that the unit is free from transportation damage.

1. Install two screws in the wall seven inches apart and mount unit using keyhole openings in rear panel.

Note: Use wall anchors as required at screw locations.

2. Locate a nearby electrical receptacle and run the power cord to the receptacle. Fasten appropriately to the wall to secure the power cord in place. Use a three-conductor extension cord with a three-prong grounding type plug if required. (See section on **Grounding Instructions**).
3. For permanent installation check local codes and consult a licensed electrician or authoritative instruction book before installing. To permanently wire, remove top cover from unit. Remove the installed power cord and install house wiring per code.
4. Plug the unit into a grounded 110/120 wall receptacle. If permanently wired, place the circuit breaker to the on position.

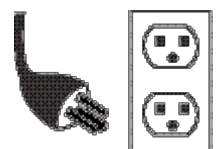
GROUNDING INSTRUCTIONS:

Your Fly Control unit is equipped with an appropriate three-conductor cord, and three-prong grounding type plug to fit the proper grounding type receptacle. To reduce the risk of an electrical shock, the plug must be plugged into an appropriate outlet that is properly installed and grounded.

Your Fly Control unit has a grounding plug that looks like the plug shown, and is intended for use on a circuit that has an outlet as shown.

Consult a qualified electrician or serviceman if the grounding instructions are not completely understood, or if doubt as to whether proper grounding exists.

GROUNDING RECEPTACLE

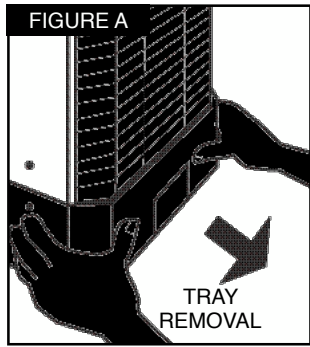


Grounding Pin

COLLECTION TRAY:

Your Fly Control unit is equipped with a sanitary, removable collection tray.

To remove insects when wall mounted; slide bottom collection tray forward to disengage tray from bottom plate. Remove by pulling downward. (See Figure A).



FLY SEX LURE:

Included with your unit is a specially designed slow-release strip containing (Z)-9-tricosene, a non-toxic and odorless fly lure, to substantially increase the effectiveness of the Fly Control device.

U.S. Government researches have demonstrated that (Z)-9-tricosene, a synthetic compound identical to the sex pheromone of house and garbage flies (*musca domestica* L.) enhances a trap's effectiveness by a factor of three to six times that of non-baited traps.

To install the Fly Sex lure, attach the strip to the outer protective grille. For best results the fly lure slow-release strip should be replaced every 30 days. FA-5000 lures are available from your dealer or on-line at [***. owtron.com](http://www.owtron.com).

When replacing a used lure, wrap it in newspaper and dispose in trash. Always wash hands thoroughly after contact with the lure strip.

MAINTENANCE

Other than the recommended cleaning and bulb replacement, no further maintenance should be necessary.

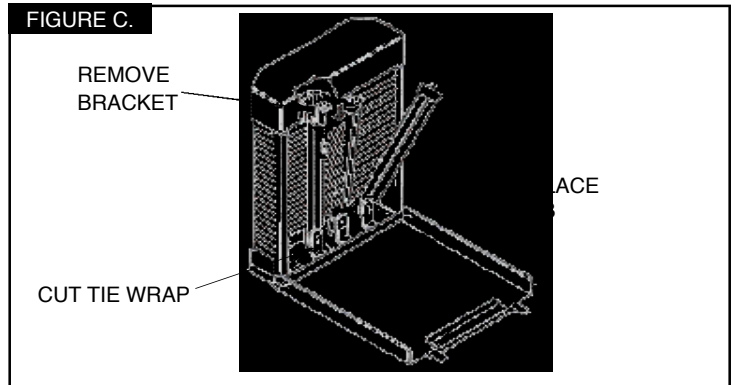
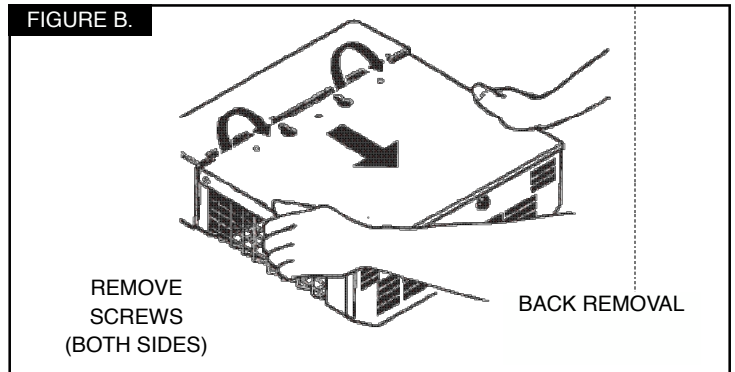
Cleaning: Clean your insect killer at least once a year. The bulbs should be cleaned more frequently because dust build-up will inhibit ultraviolet light output. Clean with a small brush or blow out dead insects using a blower such as a portable hair dryer or the exhaust attachment of a vacuum cleaner. Be sure to unplug the unit before cleaning. **Do not spray with water.**

Bulbs should be replaced every 12 months of operation to ensure maximum output in the invisible ultraviolet frequency range.

Your unit uses three BF-130 (40 watt) black light bulbs that can be purchased from your dealer or on-line at [***. owtron.com](http://www.owtron.com).

BULB AND STARTER REPLACEMENT:

1. Unplug the unit from power source.
2. Remove screws from sides of back panel and pull the back panel downward to disengage it from the top. Swing it outward on its hinges. (Figure B).
3. Remove screw and bulb bracket from top of bulb and cut the tie wrap holding end of the bulb. Discard bracket and tie wrap. They are for shipping purposes only. (See Figure C)
4. Replace bulb.
5. Replace starter, if required.



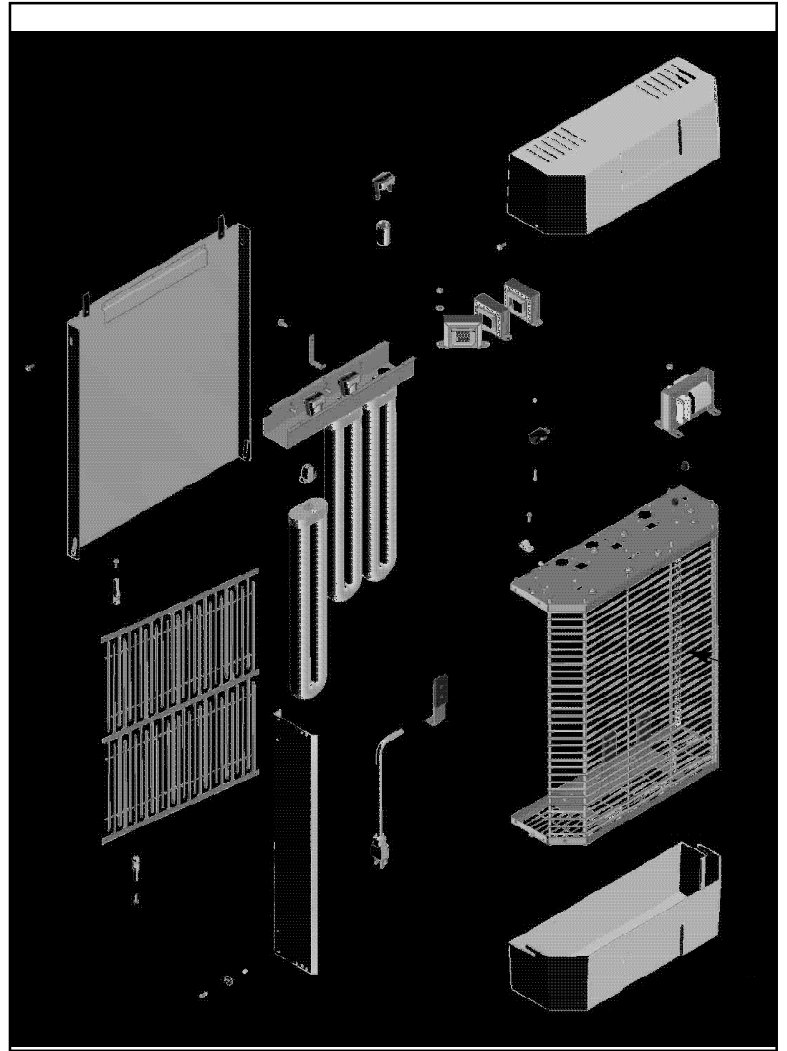
TROUBLESHOOTING AND REPAIR ANALYSIS

Problem	Possible Cause	Correction
A. Bulb(s) do not light and no voltage on grid.	1. No electrical power.	1. Check fuse or circuit breaker.
B. Bulb(s) light, but no grid voltage.	1. Shorted grids. 2. Transformer defective.	1. Ensure grid rods are free from foreign material, dirt or a build-up of dead insects. 2. Replace transformer.
C. Grid voltage present, but bulb(s) do not light. 2	1. Bulb(s) not seated properly. Starter defective. 3. Bulb(s) defective 4. Ballast defective.	1. Check all sockets for proper seating and alignment. 2. Replace starter. 3. Replace bulb(s). 4. Replace ballast.
D. Intermittent or continuous sparking between grids.	1. Gap between grid rods too small. 2. Grid clogged with foreign material. 3. Grid not seated in insulator.	1. Unplug unit and adjust grid rods by bending back into alignment using screwdriver blade. 2. Clean grid using an air blower. 3. Look for proper grid seating at all insulators.
E. Decrease in luring effectiveness.	1. Insufficient U.V. output. 2. Fly lure ineffective	1. Replace bulb(s). 2. Replace fly lure.

models FC-7800C/GL-4300C

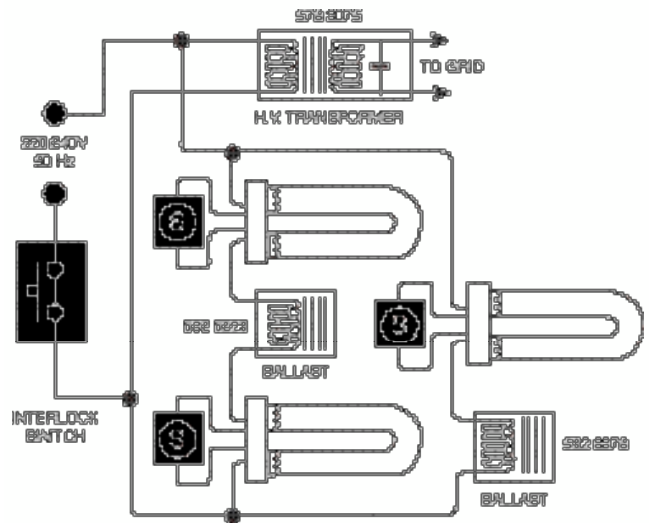
PARTS LIST

REF. #	PART #	DESCRIPTION	QTY.
1	555 3492	BOTTOM COVER	1
2	505 9945	BOTTOM PLATE ASSY.	1
3	552 9963	BULB SOCKET PANEL	1
4	572 9784	GRILLE	1
5	505 9941	TOP PLATE ASSY. – FC 7800	1
6	576 4659	TRANSFORMER	1
7	532 4559	BALLAST	3
8	596 395	BUSHING, .38 I.D.	2
9	552 9783	SIDE PANEL, FC 7800	2
10	245 6273 P01	FLAT WASHER	2
11	571 1259	STARTER SOCKET	3
12	531 6750	STARTER	3
13	555 3491	TOP COVER	1
14	245 6245 P12	SHEET METAL SCREW HEX HD.	5
15	544 5826	GRID INSULATOR	5
16	505 9950	GRID ASSY	1
17	594 8486	INTERLOCK SWITCH	1
18	505 2710	POWER CORD ASSY.	1
19	571 6357	BULB SOCKET	3
20	245 6269 P06	HEX NUT, SELF-LOCKING, # 10-32	8
21	596 940 P04	CABLE CLAMP	1
22	245 6245 P28	SHEET METAL SCREW, # 8 X 1/2"	14
23	552 5625	BULB SUPPORT BRACKET	3
24	BF 130 (530 5311)	BLACK LIGHT BULB	3
25	552 9964	BULB BRACKET	3
26	245 6272 P04	FLAT WASHER, # 10	6
27	505 4407	BACK PLATE ASSY.	1
28	555 2170	ACTUATOR BAR	2
29	245 6224 P16	PAN HD. SCREW 4-40 X 5/8	2
30	245 6269 P01	HEX. NUT, SELF-LOCKING, #4-40	2
31	596 6042	STAND OFF	2
32	567 5626	RUBBER PAD, BULB	3
33	566 1353	POP RIVET	2
34	557 9946	OWNER'S MANUAL	1

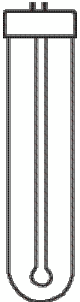


220/240V, 50HZ REQUIRES TRANSFORMER 576-3075 AND ONE EACH BALLAST 532-5213 AND BALLAST 532-8376. REFER TO 220/240 VOLT WIRING DIAGRAM

220/240 VOLT WIRING DIAGRAM



FLY CONTROL ACCESSORIES



REPLACEMENT BULBS
Minimum yearly replacement recommended to retain maximum blacklight output.



POWERFUL FLY SEX LURE — Model FA-5000
Twice as effective as black light alone. Hooks onto outer grill to provide 24 hour luring power. Effective for 30 days.