

PARTS LIST

TFMX-C ***(SINGLE HEAD)***

Table of Contents

- GENERAL VIEW
- FRAMING..... MG-1
- STAND (OPTION)..... MG-2
- MAIN SHAFT DRIVE SYSTEM..... MG-3
- CYLINDER BED 1..... MG-4-1
- CYLINDER BED 2..... MG-4-2
- COLOR CHANGE SYSTEM..... MG-5
- ARM 1..... MG-6-1
- ARM 2..... MG-6-2
- ARM 3..... MG-6-3
- NEEDLE BAR CASE 1..... MG-7-1
- NEEDLE BAR CASE 2..... MG-7-2
- UPPER THREAD HOLDER SET..... MG-8
- X-AXIS DRIVE SYSTEM..... MG-9
- Y-AXIS DRIVE SYSTEM..... MG-10-1
- Y-AXIS SPEED REDUCING SYSTEM..... MG-10-2
- ROTARY-TYPE TENSION BASE..... MG-11
- THREAD STAND..... MG-12
- BORDER FRAME (OPTION)..... MG-13
- 6.5-INCH OPERATION PANEL..... MG-14
- ELECTRICAL PARTS..... MG-15
- UNDER THREAD WINDER (OPTION)..... MG-16

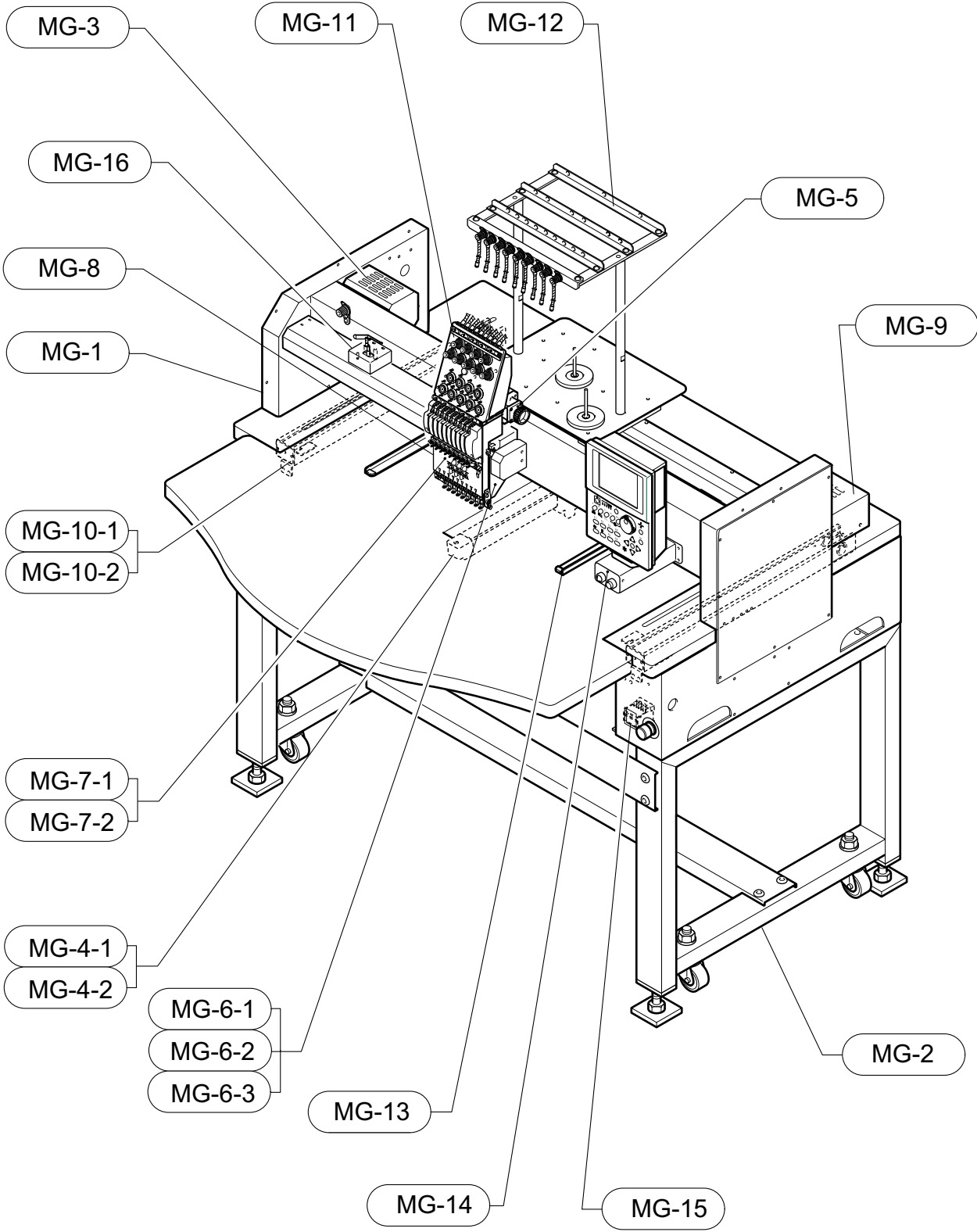
Part Nos. of screws, nuts, washers etc. are listed at the end of volume.

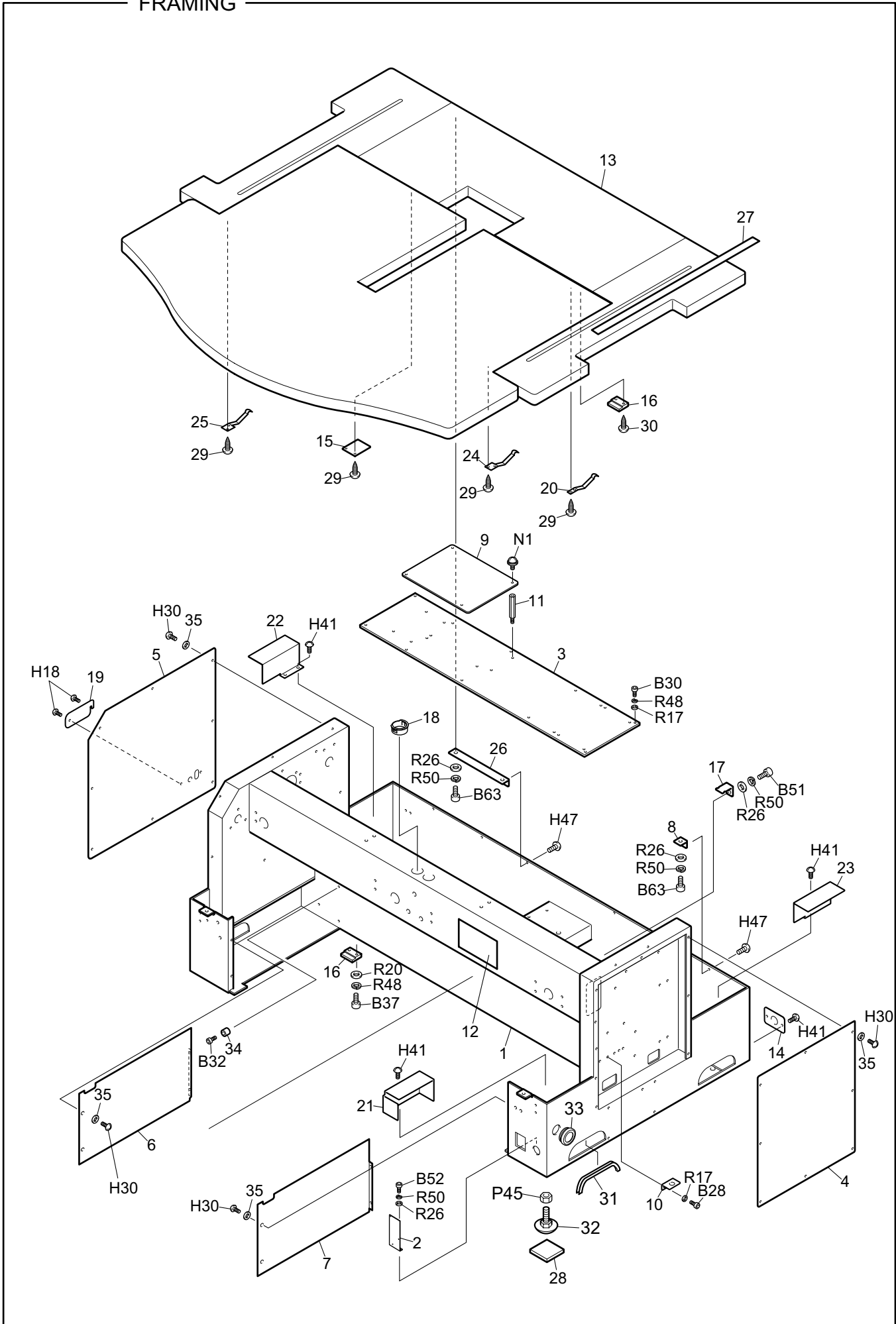
*Regarding the part number that contains description of @, the part differs depending on model, spec. etc.

*When you place an order of such a part, please also inform us of your model, embroidery space and manufacturing number of the machine.

Ex.	TFMX-C901	(450×520)S	No.01234
	[Model]	[Emb. Space]	[Mfg. No.]

TFMX-C GENERAL VIEW





FRAMING

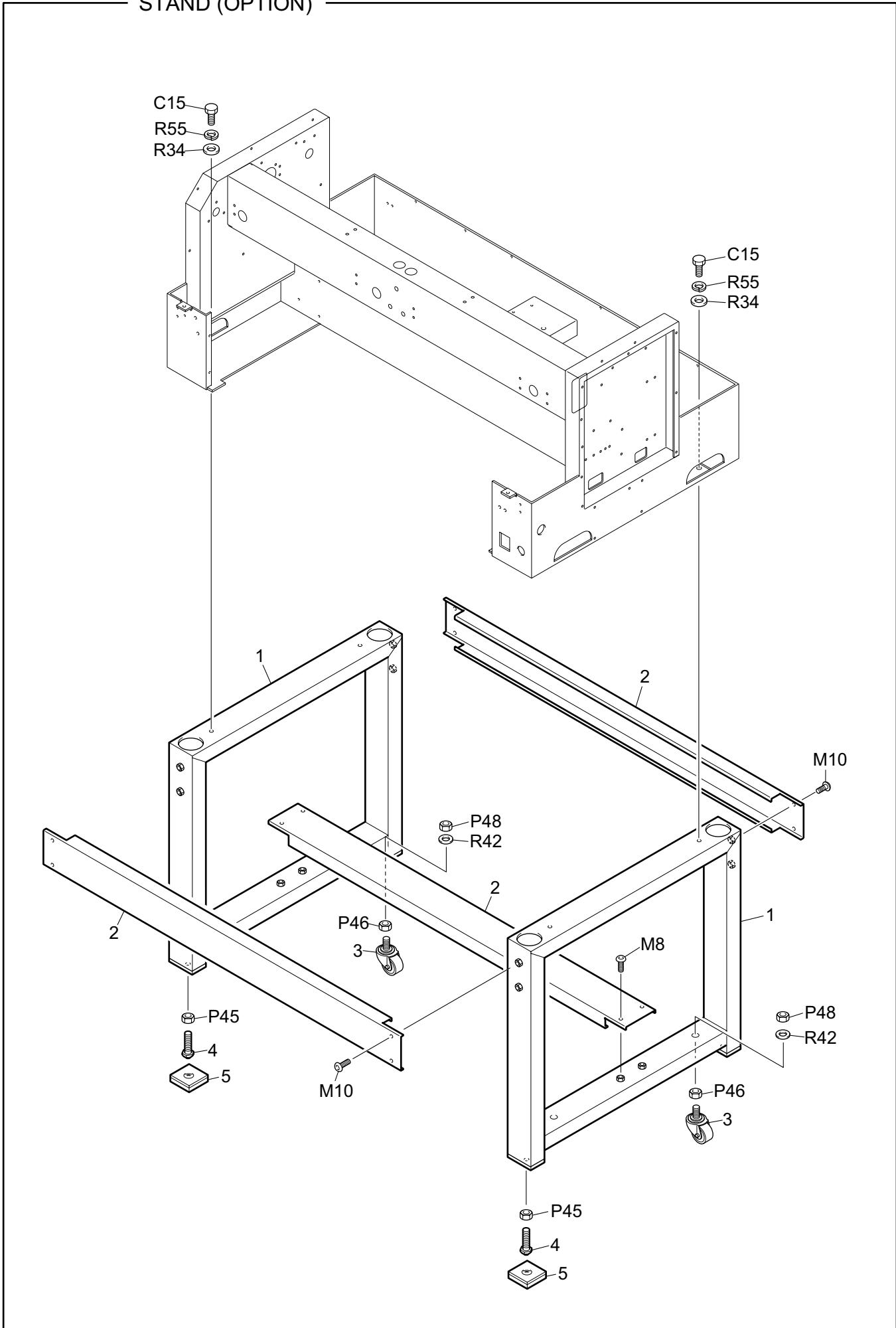
MG-1

Ref.No.	Description	Part No.	Remark
1	Stand :0601-1501/045*520S[A]	MS7100@@0A00	
2	Bracket :Breaker	030130150000	
3	Base :Card	030190270000	
4	Cover :Right-side Box	030440300000	
5	Cover :Left-side Box	030440310000	
6	Cover :Stand :L	03044032L000	
7	Cover :Stand :R	03044032R000	
8	Bracket :Table	030610190000	
9	Cover :DC Power Supply	0J5100900000	
10	Holder :Fuse	0L2240100000	
11	Stud :No.1 :M3-70	505103050000	
12	Main Name Plate :TFMX-C Representative Drawing	14S70@@@0000	
13	Table :0001/045*520S	2S7100010000	
14	Holder :Harness :A	03014003A000	
15	Table Holder	030610010010	
16	Stopper	030620030020	
17	Stay :Wiring	0F4160360000	
18	Bushing :Harness	0J1501100010	
19	Lid :Handle	0L2210010000	
20	Plate Spring :t1.5	507815010000	
21	Cover :Handle :Front	030440100010	
22	Cover :Handle :Rear L	03044011L000	
23	Cover :Handle :Rear R	03044011R000	
24	Plate Spring :t1.5	507815020000	
25	Plate Spring :t1.5	507815030000	
26	Bracket :Table :B	030610160010	
27	Scale Sheet	0P1200020000	
28	Vibration-preventive Rubber	030520020000	
29	Truss Tapping Screw	ZZ010416SD00	4P*16
30	Truss Tapping Screw	ZZ010420SD00	4P*20
31	Regular Trim :270mm	617300030000	
32	Adjuster :55mm Dia.	614300030000	
33	Grommet with Film :26A	644500210000	
34	Damper Ring :4mm Dia.	080320410000	
35	Nylon Washer	BPNN04090300	
36			
37			
38			
39			
40			
41			
42			
43			
44			
45			
46			
47			
48			
49			
50			

Note: As for parts with marks # , * or @, please follow our instructions on Table of Contents in your parts order.

(IA01)

STAND (OPTION)



STAND (OPTION)

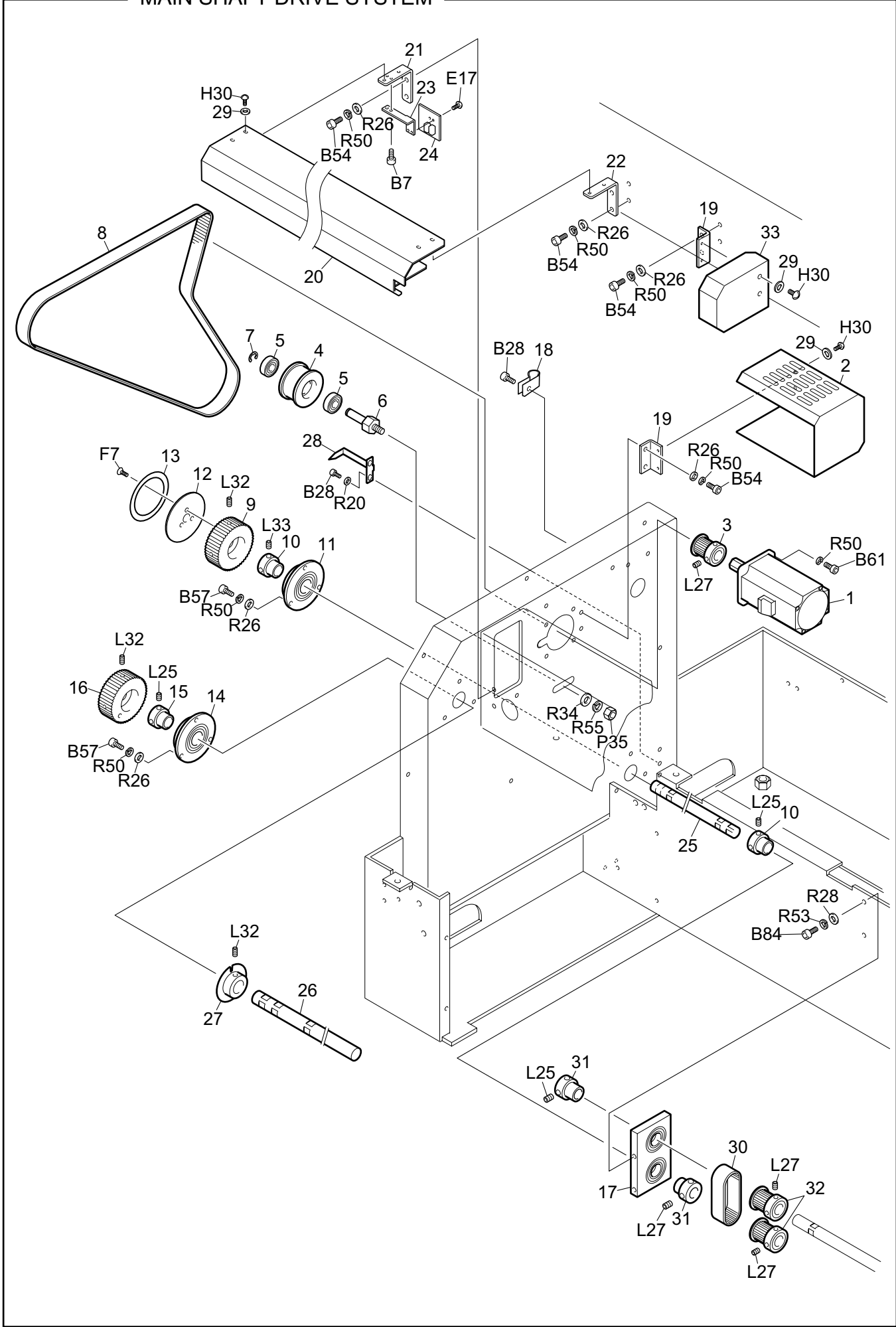
MG-2

Ref.No.	Description	Part No.	Remark
1	Base :Stand	0L3110010000	
2	Joint :Stand Base	0L3110030000	
3	Caster :SAR65M	614300140000	
4	Leveling Bolt :M12*50	030530040000	
5	Vibration-preventive Base[S]	030520040S00	
6			
7			
8			
9			
10			
11			
12			
13			
14			
15			
16			
17			
18			
19			
20			
21			
22			
23			
24			
25			
26			
27			
28			
29			
30			
31			
32			
33			
34			
35			
36			
37			
38			
39			
40			
41			
42			
43			
44			
45			
46			
47			
48			
49			
50			

Note: As for parts with marks # , * or @, please follow our instructions on Table of Contents in your parts order.

(IA01)

MAIN SHAFT DRIVE SYSTEM



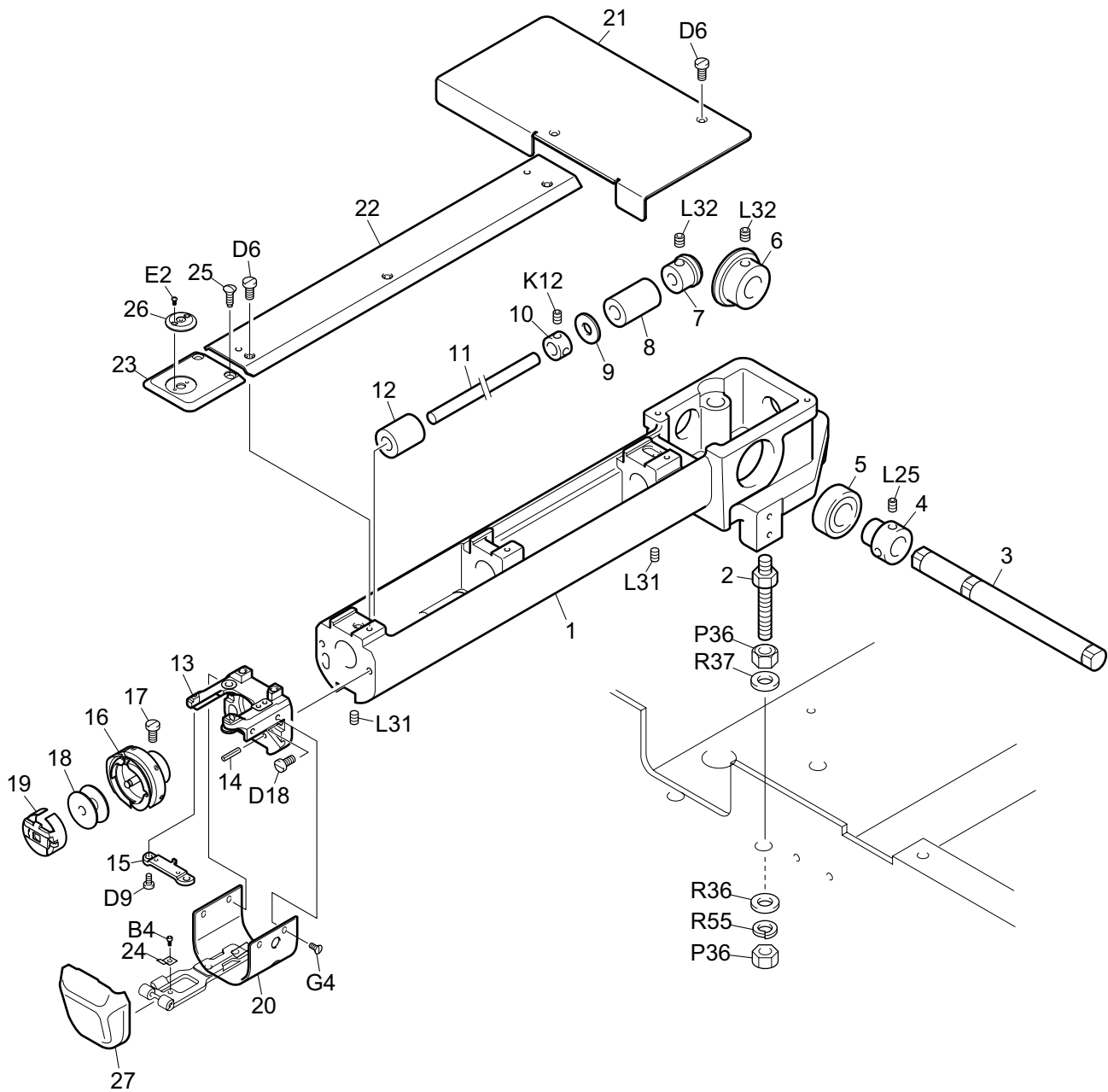
MAIN SHAFT DRIVE SYSTEM

MG-3

Ref.No.	Description	Part No.	Remark
1	Servo Motor :200W	0J6300300000	
2	Cover :Main Motor	030150170000	
3	Timing Pulley :Main Shaft :W15-16	501430150000	
4	Flat Pulley :40mm Dia.	501901010030	
5	Bearing :6000ZZ	630200050000	
6	Screw with Roller Pin :No.3 :M8	514308050000	
7	E-ring :7mm Dia.	611100100000	
8	Timing Belt :S5MN :W15-1125/G	623200240000	
9	Timing Pulley :B :W15-40	50143303B000	
10	Bearing Collar :15mm Dia.	502715040000	
11	Bearing Case :No.2 :20mm Dia.[S]	508220060S00	
12	Base :Angle Indicator	040420210010	
13	Angle Indicator	040420230000	
14	Bearing Case :No.2: 22mm Dia.[S]	508222020S00	
15	Bearing Collar :18mm Dia.	502718010000	
16	Timing Pulley :A :W15-40	50143303A000	
17	Bearing Case :Lower Shaft/Regular Rotary Hook[S]	040140010S00	
17	Bearing Case :Lower Shaft/Jumbo Rotary Hook[S]	04014001JS00	
18	Clamp :5N	644500050000	
19	Bracket :Cover	030460050010	
20	Shaft Cover	170180010000	
21	Base :Sensor :Without Spacer	040360040000	
22	Bracket :Shaft Cover :B	030460130000	
23	Bracket :Sensor	040360020000	
24	Card :Photo-interrupter	0J4201600010	
25	Rotary Hook Shaft :15P*558	QS7102020000	
26	Main Shaft :18P*682	QS7101010000	
27	Rotating Detecting Plate	040360010000	
28	Pointer	040410070000	
29	Nylon Washer	BPNN04090300	
30	Timing Belt :S3MN :W15-207/G	621300020000	Regular Rotary Hook Spec.
30	Timing Belt :S3MN :W15-201/G	621300010000	Jumbo Rotary Hook Spec,
31	Bearing Collar :15mm Dia.	502715080000	
32	Timing Pulley :W15-30[S]	501237010S00	
33	Cover :18mm Dia. Tightening Collar	170110030010	
34			
35			
36			
37			
38			
39			
40			
41			
42			
43			
44			
45			
46			
47			
48			

Note: As for parts with marks # , * or @, please follow our instructions on Table of Contents in your parts order.

(IA01)



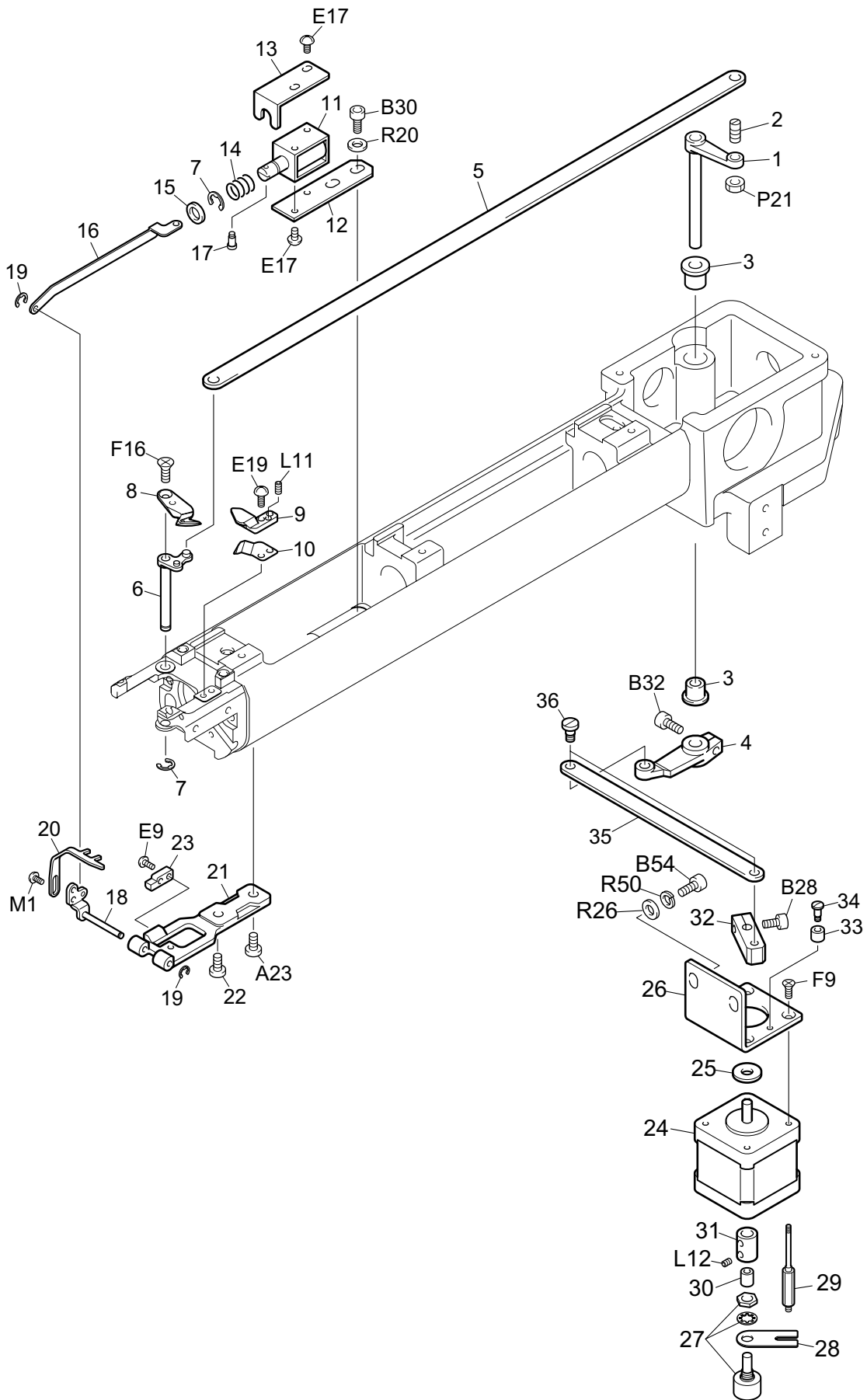
CYLINDER BED 1

MG-4-1

Ref.No.	Description	Part No.	Remark
1	Cylinder Bed :No.1 :Regular Rotary Hook	05012001A000	
1	Cylinder Bed :No.1 :Jumbo Rotary Hook	05012002A000	
2	Rotary Hook Base Stud	050310110000	
3	Rotary Hook Shaft :15P*179	QS7102010000	
4	Bearing Collar :15mm Dia.	502715080000	
5	Bearing :6003ZZ	630200080000	
6	Spiral Bevel Gear :No.1 :28T	506528010000	
7	Spiral Bevel Gear :No.1 :14T	506514010000	
8	Lower Shaft Bushing, Rear	DC0504010000	
9	Plain Washer :7.94*19*t0.8	519108030000	
10	Lower Shaft Collar	ME0510000000	
11	Shaft :Rotary Hook :7.94mm Dia.	050330430000	
12	Oil-bushing :No.1 :7.94mm Dia.	509179020000	
13	Needle Plate Bracket	050330460000	
14	Spring Pin :3*12	611400080000	
15	Rotary Hook Support	050330270010	
16	Rotary Hook :Regular Rotary Hook HSL-ATR(MTQETA)	050210140010	
16	Rotary Hook :Jumbo Rotary Hook KHS-20RY-POET2	05022005J010	
17	Rotary Hook Set Screw	ME0506000000	
18	Bobbin :Regular Rotary Hook	050260010020	
18	Bobbin :HSM Aluminum Full Hard Alumite	05027002J000	For Jumbo Rotary Hook
19	Bobbin Case :BC-HR(4)-NBL	050240150000	
19	Bobbin Case :Jumbo Rotary Hook DBM(Z2)-NBL	05025001J000	
20	Cover :Needle Plate Bracket	050330510000	
21	Cover :Cylinder Bed :Rear	050330490000	
22	Cover :Cylinder Bed :Front	050330450000	
23	Needle Plate :Common-use	050340150000	
24	Plate Spring :Rotary Hook Cover :t0.2	507802050000	
25	Round Countersunk Head Screw :11/64*8.4B	511554010000	
26	Boss :Common-use Needle Plate :2mm Dia.	050340160000	
26	Boss :Common-use Needle Plate/Cap Frame :2mm Dia.	050340200000	
27	Rotary Hook Cover	050330500000	
28			
29			
30			
31			
32			
33			
34			
35			
36			
37			
38			
39			
40			
41			
42			
43			
44			
45			

Note: As for parts with marks # , * or @, please follow our instructions on Table of Contents in your parts order.

(IA01)



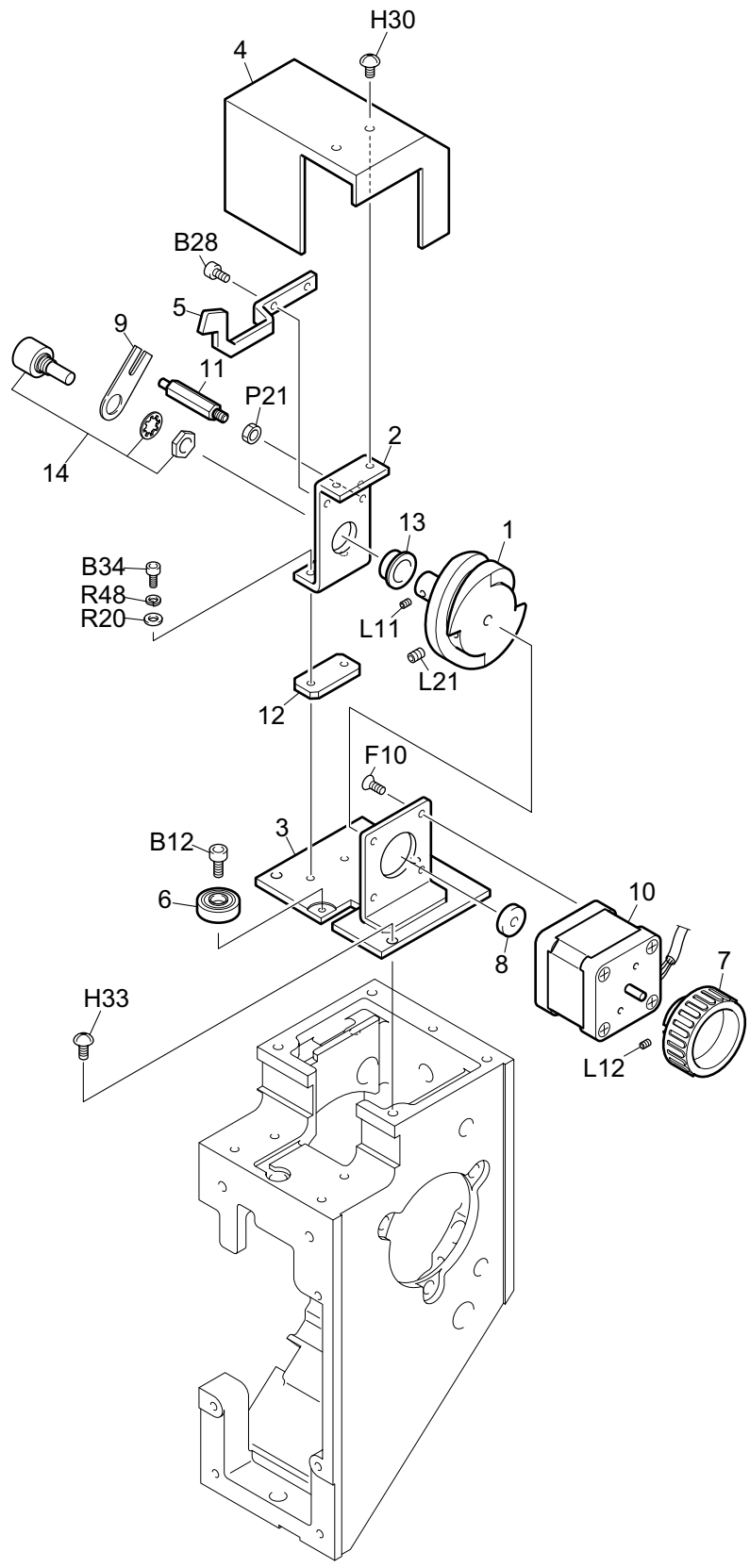
CYLINDER BED 2

MG-4-2

Ref.No.	Description	Part No.	Remark
1	Thread Trimming Lever	FC0217010000	
2	Screw with Pin :No.4 :M4-1.8	513404030000	
3	Oil-bushing :No.1 :F81212162	638100370000	
4	Lever :Knife Drive Plate Shaft	050320270010	
5	Connecting Plate :Knife	050320800000	
6	Lever Shaft :Knife[S]	050320040S10	
7	E-ring :4mm Dia.	611100070000	
8	Movable Knife	050320810000	
9	Fixed Knife	050320730010	
10	Under Thread Presser	050320740000	
11	Solenoid :Open Frame	640600020010	
12	Bracket :Picker Solenoid	050320540000	
13	Cover :Picker Solenoid	050320360010	
14	Compression Spring :0.6mm Dia.	507606020000	
15	O-ring :6.8mm Dia.	050320510000	
16	Connecting Plate :Picker	050320570010	
17	Stepped Screw :No.1 :M2.5*6	512130010000	
18	Shaft :Picker	050320750030	
19	E-ring :2mm Dia.	611100050000	
20	Picker	050320760010	
21	Holder :Picker Shaft	050320840000	
22	Flat Fillister Head Screw :M6*10	511106010000	
23	Stopper :Picker	050320700000	
24	Pulse Motor :42mm Square :Double-end[T]	0J6103900T00	
25	Resin Washer :6*15*t2	519206010000	
26	Bracket :ATH Motor	050320410000	
27	Potentiometer	640900030000	
28	Bracket :Potentiometer	0C0410130010	
29	Stud :No.4 :Potentiometer	505403020000	
30	Stopper Joint :5mm Dia.	504105020000	
31	Split Collar :3mm Dia.	502303010000	
32	Lever: ATH	050320420000	
33	Damper Ring :4mm Dia.	080320410000	
34	Stepped Screw :No.1 :9/64*10	512153020000	
35	Connecting Plate	050320430000	
36	Stepped Screw :No.1 :M4*6.7	512104100010	
37			
38			
39			
40			
41			
42			
43			
44			
45			
46			
47			
48			
49			
50			

Note: As for parts with marks # , * or @, please follow our instructions on Table of Contents in your parts order.

(IA01)



COLOR CHANGE SYSTEM

MG-5

Ref.No.	Description	Part No.	Remark
1	Cam :Change	070110030000	
2	Bearing Case :Change Cam	070120450000	
3	Bracket :Change	070110340000	
4	Cover :Change	070110350000	
5	Sensor Arm	070120460000	
6	Roller Pin[S]	080290040S00	
7	Knob :B	08052001B000	
8	Collar :5.1mm Dia.	080520050000	
9	Bracket :Potentiometer	0C0420020010	
10	Pulse Motor :42mm Square :Double-end	0J6105100010	
11	Stud :No.4 :M4-27.5	505404030010	
12	Spacer :No.2 :t3	510200390000	
13	Oil-bushing :No.2 :MB0206-20FDU	638100240000	
14	Potentiometer	640900010000	
15			
16			
17			
18			
19			
20			
21			
22			
23			
24			
25			
26			
27			
28			
29			
30			
31			
32			
33			
34			
35			
36			
37			
38			
39			
40			
41			
42			
43			
44			
45			
46			
47			
48			
49			
50			

Note: As for parts with marks # , * or @, please follow our instructions on Table of Contents in your parts order.

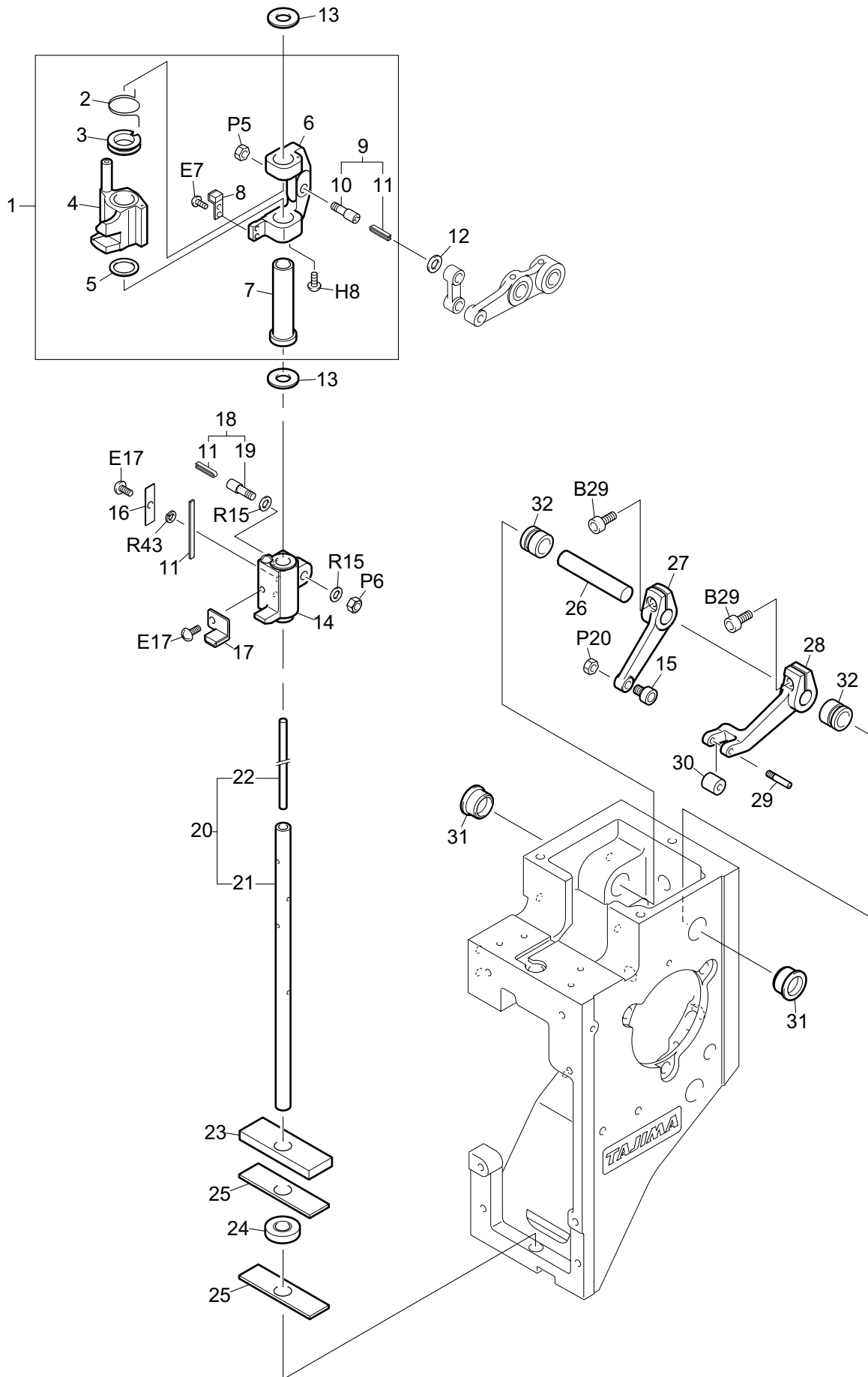
ARM 1

MG-6-1

Ref.No.	Description	Part No.	Remark
1	Head	080120010010	
2	Linear Way :Needle Bar Case :09-Needle	080250049000	
2	Linear Way :Needle Bar Case :12-Needle	08025004Y000	
2	Linear Way :Needle Bar Case :15-Needle	08025004X000	
3	Reinforcing Plate :12-Needle	08025005Y000	
3	Reinforcing Plate :15-Needle	08025005X000	
4	Head Front Cover :L	08042002L000	
5	Head Front Cover :R	08042002R000	
6	Solenoid :Open Frame :LCP98M	640600120000	
7	O-ring :S-7	612200050000	
8	E-ring :4mm Dia.	611100070000	
9	O-ring :SS-18	612200150000	
10	E-ring :1.5mm Dia.	611100040000	
11	Lever	080270010000	
12	Torsion Spring :0.5mm Dia.	507305020000	
13	Collar :No.1 :3.1mm Dia.	502505010000	
14	Lever :Drive	080270040000	
15	Guide Plate :Needle Bar Case	080250020000	
16	Guide Bracket :Needle Bar Case	080250030010	
17	Side Cover :Head :Lower	080430020000	
18	Side Cover :Head :Upper	080430010000	
19	Bracket :Jump Motor	080320280000	
20	Pulse Motor :42mm Square :Double-end	0J6105100010	
21	Lever :Jump	080320420010	
22	Roller Pin[S]	514154050S00	
23	Torsion Spring :0.9mm Dia.	507309040020	
24	Damper Ring :4mm Dia.	080320410000	
25	Stepped Screw :No.1 :9/64*10	512153020000	
26	Take-up Lever Guide Rail	080280070000	
27	Stopper :Linear Way	080260120000	
28	Flat Fillister Head Screw :M4*10	511104010000	
29			
30			
31			
32			
33			
34			
35			
36			
37			
38			
39			
40			
41			
42			
43			
44			
45			
46			
47			

Note: As for parts with marks # , * or @, please follow our instructions on Table of Contents in your parts order.

(IA01)



ARM 2

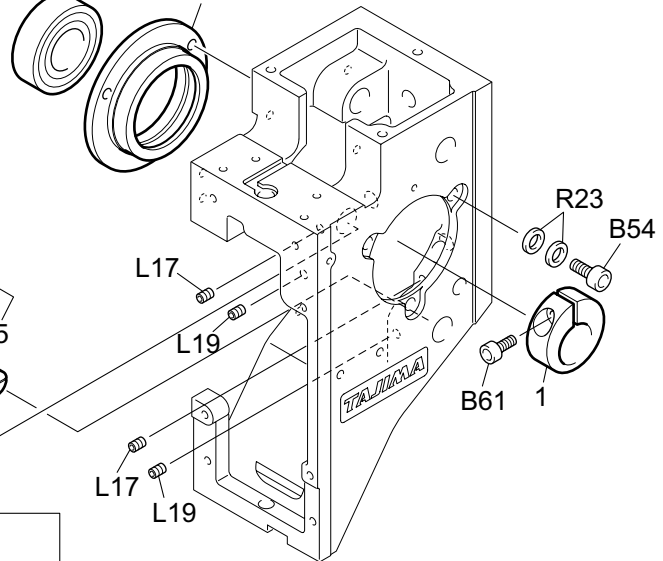
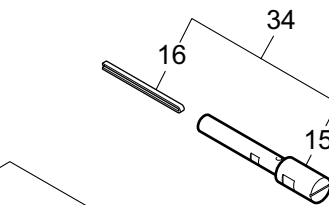
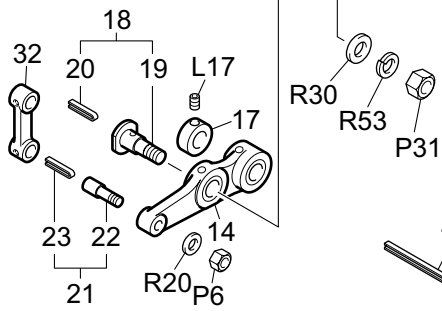
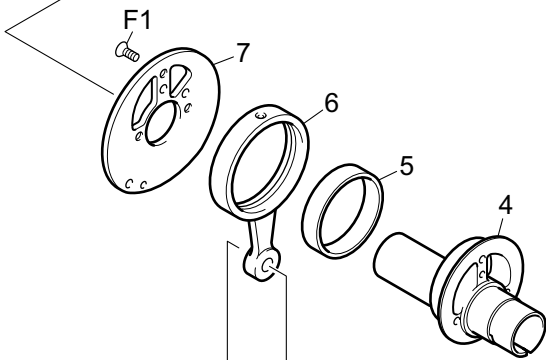
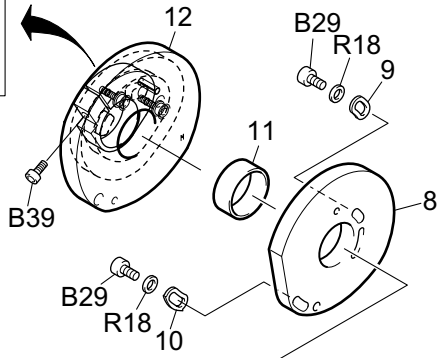
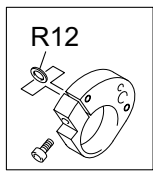
MG-6-2

Ref.No.	Description	Part No.	Remark
1	Needle Bar Reciprocator :GN	U89300000100	
2	Torsion Spring :0.7mm Dia.	507307010000	
3	Holder :Jump Spring	080210110000	
4	Needle Bar Reciprocator[S]	080210270S20	
5	Plain Washer :10.3*14*t0.5	519112010000	
6	Reciprocator Slide Block	080210140020	
7	Plastic Bushing :No.2 :7.24mm Dia.	509472050010	
8	Damper Bracket	080210090000	
9	Screw with Pin :No.3 :11/64-7.7[A]	513354030A00	
10	Screw with Pin :No.3 :11/64-7.7	513354030000	
11	Wick B	EF0557000000	
12	Plain Washer :6*9.5*t0.5	519106043010	0.5mm Thick
12	Plain Washer :6*9.5*t0.4	519106042010	0.4mm Thick
12	Plain Washer :6*9.5*t0.3	519106041010	0.3mm Thick
13	Felt :14mm Dia.	080240060000	
14	Presser Foot Reciprocator[S]	080210060S00	
15	C Flange Pin[S]	503303010S20	
16	Plate	080250060000	
17	Damper Bracket	080210180000	
18	Screw with Pin :No.3 :11/64-7.7[A]	513354020A10	
19	Screw with Pin :No.3 :11/64-7.7	513354020010	
20	Needle Bar Drive Shaft[S]	080210120S40	
21	Needle Bar Drive Shaft	080210120040	
22	Wick	080240020010	
23	Felt :Needle Bar Drive Shaft :B	080240070000	
24	Guide :Needle Bar Case[S]	080250170S00	
25	Felt :Needle Bar Drive Shaft	080240010000	
26	Straight Pin :No.1 :8mm Dia.	503101130000	
27	Lever :Take-up Lever	080230020000	
28	Arm :Take-up Lever	080230060000	
29	Screw with Pin :No.4 :M3-12.5	513403020000	
30	Roller :3mm Dia.	515103010000	
31	Lid :Take-up Lever Bearing Case :13mm Dia.	080290010000	
32	Bearing Case Bushing :No.1 :8mm Dia.	509508080000	
33			
34			
35			
36			
37			
38			
39			
40			
41			
42			
43			
44			
45			
46			
47			
48			

Note: As for parts with marks # , * or @, please follow our instructions on Table of Contents in your parts order.

(IA01)

ARM 3



ARM 3

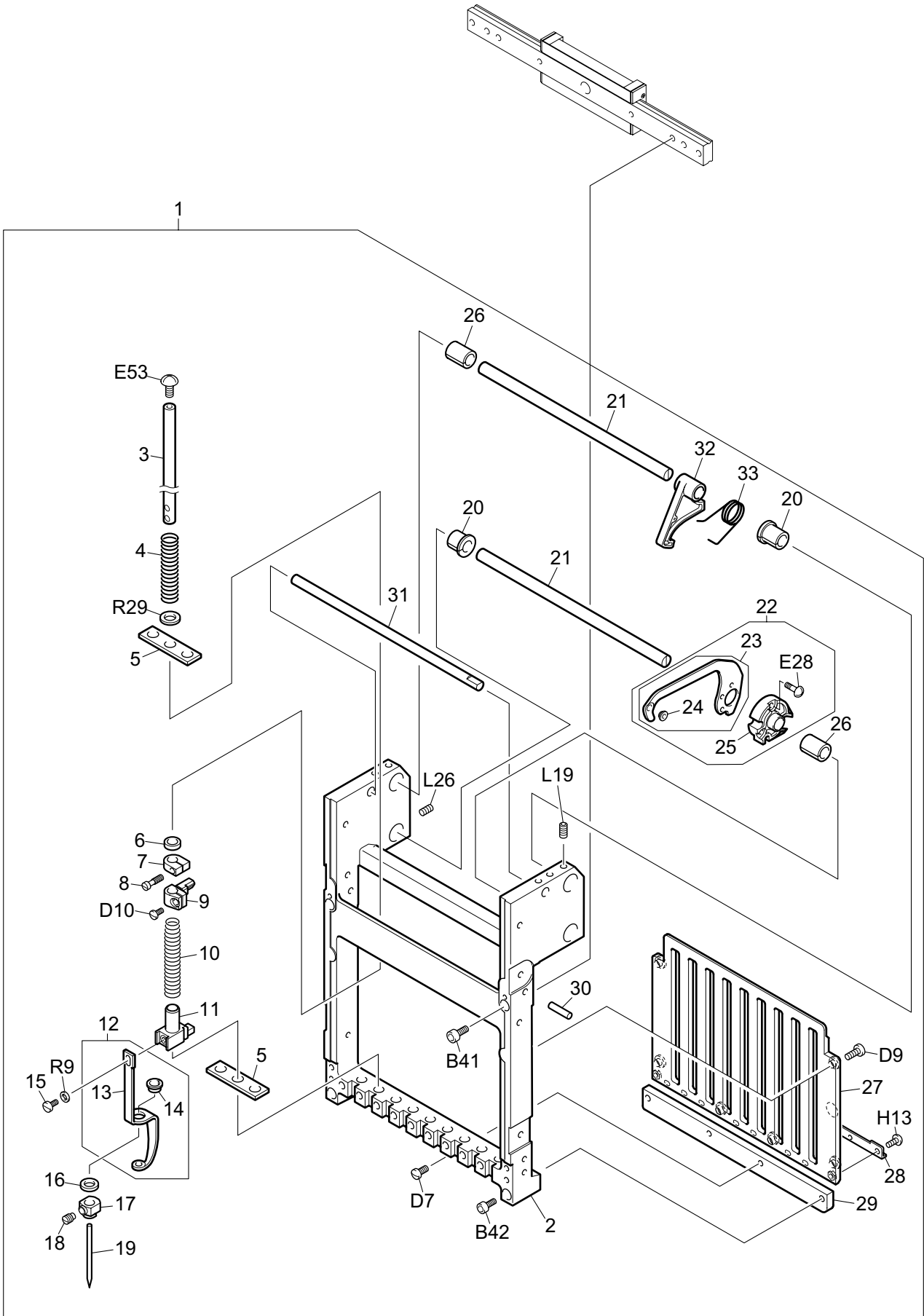
MG-6-3

Ref.No.	Description	Part No.	Remark
1	Tightening Collar :21mm Dia.	502221010000	
2	Bearing Case :No.2: 22mm Dia.[S]	508222010S00	
3	Bearing :60/22ZZ	630200040000	
4	Cam: Needle Bar	080220010000	
5	Needle Cage :KT404310NE01B2	634400070000	
6	Connecting Rod :51.7	080220040000	
7	Base :Take-up Lever Cam	080220050000	
8	Cam :Take-up Lever: Regular Rotary Hook	080220060000	
8	Cam :Take-up Lever: Jumbo Rotary Hook	080220070000	
9	Washer :Cam	080220180000	
10	Washer :Cam	080220190000	
11	Collar :No.1 :21mm Dia.	502521010000	
12	Cam :Presser Foot[A]	080220021A00	
13	Screw with Roller Pin :No.4 :11/64E[S]	080230150S10	
14	Lever :Needle Bar[S]	080230050S00	
15	Stepped Pin :No.4	503204040000	
16	Wick	080240040010	
17	Stopper Collar :8mm Dia.	502108020000	
18	Stepped Screw :No.2 :M6*13[S]	512206010S10	
19	Stepped Screw :No.2 :M6*13	512206010010	
20	Wick A	EF0556000000	
21	Screw with Pin :No.3 :11/64-7.7[A]	513354020A10	
22	Screw with Pin :No.3 :11/64-7.7	513354020010	
23	Wick	080240120000	
24	Connecting Rod :26	080230010000	
25	Lever :Presser Foot	080230140030	
26	Stepped Pin :No.4	503204030000	
27	Stopper Collar :8mm Dia.	502108050000	
28	Cam Follower :CFS4-15E02	634500020000	
29	Screw with Pin :No.4 :11/64E	080230150010	
30	Plain Washer :8*15*t0.5	519108050000	
31	Drive Lever Set	UN250C010000	
32	Connecting Rod	080230210000	
33	Stepped Pin :No.4[S]	503204030S00	
34	Stepped Pin :No.4[S]	503204040S00	
35			
36			
37			
38			
39			
40			
41			
42			
43			
44			
45			
46			
47			
48			
49			

Note: As for parts with marks # , * or @, please follow our instructions on Table of Contents in your parts order.

(IA01)

NEEDLE BAR CASE 1



NEEDLE BAR CASE 1

MG-7-1

Ref.No.	Description	Part No.	Remark
1	Needle Bar Case Set	UN260125####	
2	Needle Bar Case :1st Head :06-15-Needle	09012002@000	
3	Needle Bar	090410020010	
4	Compressed Spring :0.5mm Dia.	507605090020	
5	Felt Packing	090430040000	
6	Damper Ring	090430020010	
7	Stopper :Upper Dead Point	090420040010	
8	Flat Fillister Head Screw :9/64*12	SA41741201UN	
9	Needle Bar Connecting Stud	090420060010	
10	Compressed Spring :0.9mm Dia.	507609030000	
11	Presser Foot Connecting Stud	090420020010	
12	Presser Foot[A]	090460020A00	
13	Presser Foot	090460070000	
14	Split Collar :Presser Foot	090460040020	
15	Flat Fillister Head Screw :1/8*44	090470020000	
16	Damper Ring	090430070020	
17	Needle Clamp[S]	090420010S30	
18	Slotted Set Screw :11/64*6B	511754010000	
19	Needle :DB-K5Z1 #11	616500080000	DB K5Z1 #11
20	Split Collar :No.2 :8mm Dia.	502408020000	
20	Split Collar :No.2 :8mm Dia.	502408010000	For 15-Needle M/C
21	Straight Pin :No.1 :8mm Dia.	503101149000	For 6-Needle M/C
21	Straight Pin :No.1 :8mm Dia.	503101149000	For 9-Needle M/C
21	Straight Pin :No.1 :8mm Dia.	50310123Y000	For 12-Needle M/C
21	Straight Pin :No.1 :8mm Dia.	50310125X000	For 15-Needle M/C
22	Take-up Lever[A]	090310050A20	
23	Take-up Lever[S]	090310050S20	
24	Thread Guide Collar :1.8mm Dia.	516503010010	
25	Boss :Take-up Lever	090310040010	
26	Split Collar :No.1 :8mm Dia.	502308010000	
26	Split Collar :No.1 :8mm Dia.	502308020000	For 15-Needle M/C
27	Needle Bar Guide Rail :03-15-Needle	0904500@@000	
28	Rail Guide	08027006@000	
29	Rail :Case :Lower :03-15-Needle	09044001@010	
30	Parallel Pin :4*16-h7	611200050000	
31	Straight Pin :No.2*6P	503102109000	
32	Lever :Stopper	090320010000	
33	Torsion Spring :1mm Dia.	507310020000	
34			
34			
35			
36			
37			
38			
39			
40			
41			
42			
43			
44			

Note: As for parts with marks # , * or @, please follow our instructions on Table of Contents in your parts order.

(IA01)

NEEDLE BAR CASE 2

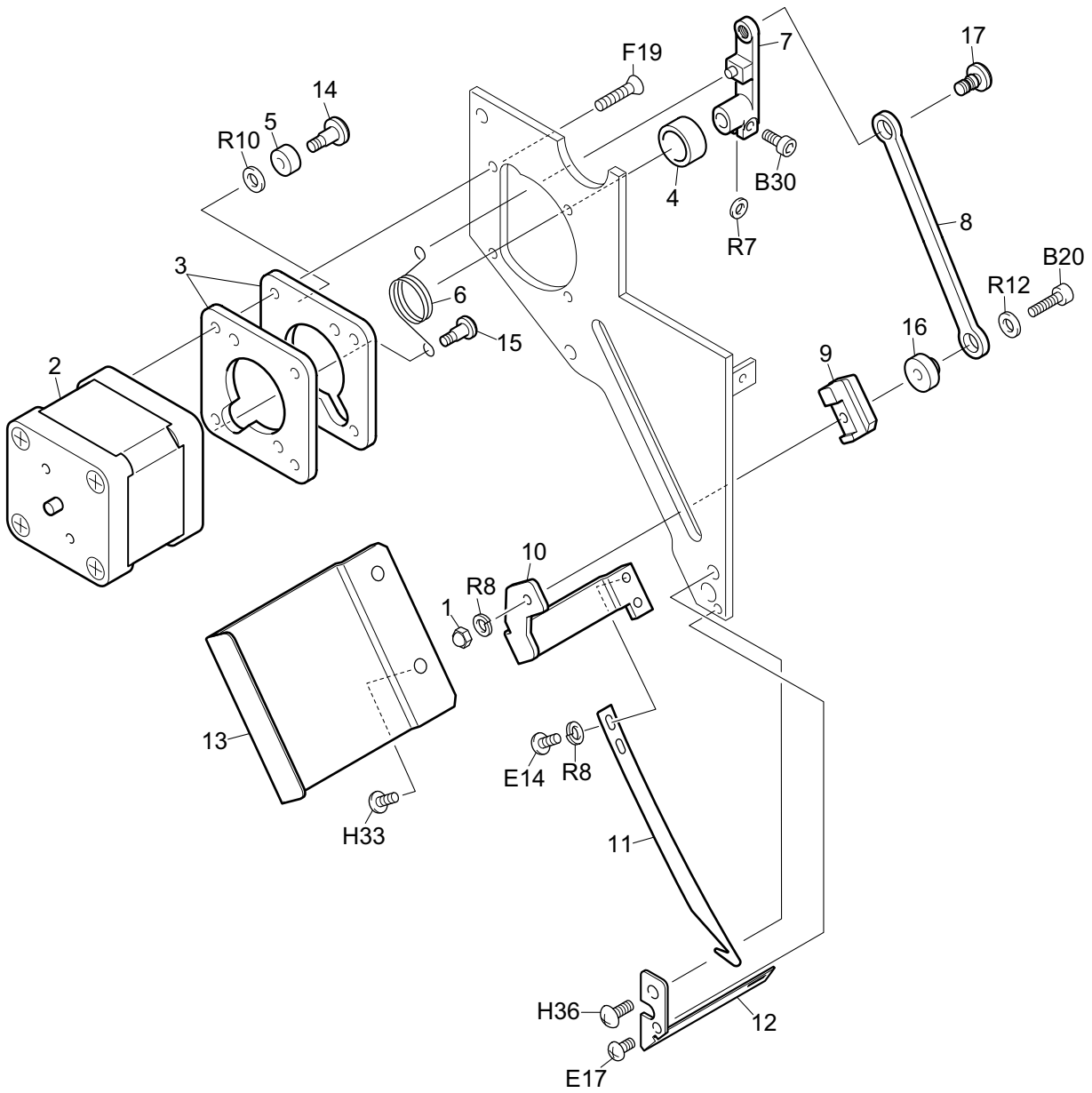
MG-7-2

Ref.No.	Description	Part No.	Remark
1	Take-up Lever Cover :06-15-Needle	09053002@000	
2	Pan Head Screw :9/64*25	511353010000	
3	Roller-type Middle Thread Guide :FN :03-15-Needle	U950@0000010	
4	Thread Take-up Spring Attaching Base	FN063102####	
5	Retracting Lever Set	FN0639000000	
6	Compressed Spring :0.6mm Dia.	507606030000	
7	Ratchet	090210050000	
8	Tension Collar	090210040000	
9	Thread Take-up Spring :No.2 :0.4mm	507204010000	
10	Stroke Adjuster :A	090210020000	
11	Shaft :5mm Dia. :06-15-Needle	09021001@010	
12	Bearing Case Bushing :No.2 :5mm Dia.	509605010000	
13	Roller-type Middle Thread Guide :3-15-needle	09021009@030	
14	Straight Pin :No.1 :3mm Dia.	503101150010	
15	Thread Guide Collar :1.8mm Dia.	516503010010	
16	Face Plate :Needle Bar Case :03-15-Needle	09051001@060	
17	Upper Thread Locking Device	UN260300####	
18	Base :Upper Thread Lock :03-15-Needle	08027005@000	
19	Lock Shaft[S]	080270030S00	
20	Compressed Spring :0.3mm Dia.	507603040010	
21	Thread Presser Base Set	UN680033####	
22	Bracket :Upper Thread Holder	0B0200010000	
23	Thread Suspender Disk	0B0200050000	
24	Compressed Spring :0.3mm Dia.	507603020000	
25	Presser :Thread Suspender Spring	0B0200060000	
26	Stepped Screw :No.1 :9/64*7.5	512153040000	
27	Thread Presser Base (with Tape)	UN680172####	
28	Base :Upper Thread Holder :06-15-Needle	0B020009@000	
29	Velcro :03-15-Needle	0B020007@000	
30	Thread Presser Lid (with Tape)	UN680182####	
31	Thread Presser Lid	AT032500####	
32	Collar :No.1 :3mm Dia.	502503070000	
33	E-ring :1.5mm Dia.	611100040000	
34	Base :Change Roller :06-15-Needle	0701100@@000	
35	Screw with Roller Pin :No.1 :M5[S]	514105030S00	
36	Spacer Block	070110330000	
37			
38			
39			
40			
41			
42			
43			
44			
45			
46			
47			
48			
49			
50			

Note: As for parts with marks # , * or @, please follow our instructions on Table of Contents in your parts order.

(IA01)

UPPER THREAD HOLDER SET



UPPER THREAD HOLDER SET

MG-8

Ref.No.	Description	Part No.	Remark
1	Hexagon Cap Nut	SSN603SD0000	M3 Type 1
2	Pulse Motor :42mm Square :Double-end	0J6105100010	
3	Base :Hook Motor	0B0110380000	
4	Collar :Spring Guide	502522010010	
5	Damper Ring :4mm Dia.	080320410000	
6	Torsion Spring: 0.8mm Dia.	507308190000	
7	Lever :Hook	0B0110090010	
8	Connecting Plate :Hook	0B0110080010	
9	Slide: Hook	0B0110070000	
10	Joint :Hook	0B0110050000	
11	Hook	0B0110040000	
12	Guide :Hook	0B0110060000	
13	Cover :Hook	0B0120010000	
14	Stepped Screw :No.1 :9/64*10	512153020000	
15	Stepped Screw :No.1 :9/64*7.5	512153040000	
16	Spacer :Slide Hook	0B0110370000	
17	Stepped Screw :No.1 :M4*6.7	512104100010	
18			
19			
20			
21			
22			
23			
24			
25			
26			
27			
28			
29			
30			
31			
32			
33			
34			
35			
36			
37			
38			
39			
40			
41			
42			
43			
44			
45			
46			
47			
48			
49			
50			

Note: As for parts with marks # , * or @, please follow our instructions on Table of Contents in your parts order.

X-AXIS DRIVE SYSTEM

MG-9

Ref.No.	Description	Part No.	Remark
1	Z-spec.Frame :0001/520S	0F4110042000	
2	Bracket :X Motor	0F4150160000	
3	Cover :X Motor[S]	0F415017S000	
4	Stay :X Motor Cover	0F4150180000	
5	Bearing Case No.4 :8mm Dia.[S]	0F4150190S00	
6	Pulse Motor :60mm Square :With Sensor[A]	0J6105400A00	
7	Frame Holder	0F4120030030	
8	Linear Way	660300070000	
9	Timing Belt :W15X1495	623200140000	
10	Belt Catcher :No.1 :X	0F4160480000	
11	Belt Catcher :No.2 :X	0F4160490000	
12	Sensor Plate :No.1	0F4140030000	
13	Bracket :Magnetic Sensor	0F4140020000	
14	Card :Magnet Sensor A	0J4200800000	
15	Timing Pulley :W15X16	501430140020	
16	Timing Pulley :W15X16	501430060010	
17	Holder :Timing Pulley	0F4160040000	
18	Tensioner	0F4160050010	
19	Flange Pin :No.3	503503030000	
20	Rulon Washer :TW-1020	638400090000	
21	E-ring :7mm Dia.	611100100000	
22	Bracket :Z-spec. Frame Drive Base :R	0G028012R010	
23	Bracket :Z-spec. Frame Drive Base :L	0G028012L010	
24	Felt :t1.9[S]	0G0140040S00	
25	Needle Bearing :HK-1010	634100060000	
26	Nylon Clamp	BPNK3N000000	
27	Seal Clamp	BPCKN0500000	
28	Nylon Washer	BPNN04090300	
29	Frame Holder :L[S]	0G314009LS00	
30	Hexagon Socket Head Flange Screw	BPM4X10L0000	
31	Frame Holder :R[S]	0G314009RS00	
32	Stopper :No.1	0G314001A010	
33	Stopper :No.2	0G314001B010	
34	Plate Spring :Holder Base :t1.5	507815060010	
35	Cover :Z-spec. Frame :0001/520S	0F4110130000	
36	Scale Sheet	0P1200200000	
37			
38			
39			
40			
41			
42			
43			
44			
45			
46			
47			
48			
49			
50			

Note: As for parts with marks # , * or @, please follow our instructions on Table of Contents in your parts order.

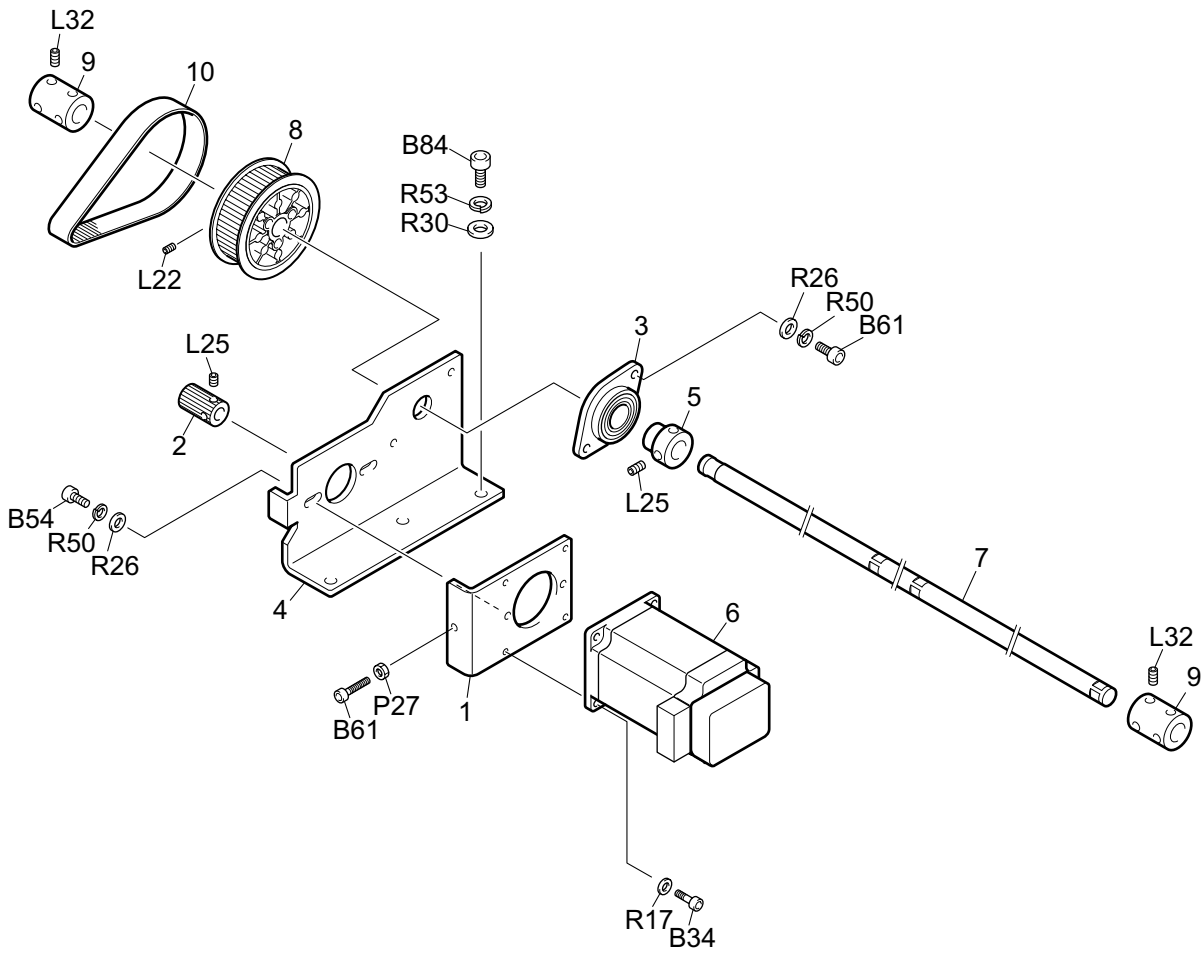
(IA01)

Y-AXIS DRIVE SYSTEM

MG-10-1

Ref.No.	Description	Part No.	Remark
1	Bracket :Y Drive Base	0F4220040000	
2	Sensor Plate :No.1[S]	0F4230370S00	
3	Z-spec. Frame Arm :L	0F423038L000	
4	Z-spec. Frame Arm :R	0F423038R000	
5	Y Drive Base :No.7 :L :Y450[S]	16071008LS00	
6	Y Drive Base :No.7 :R :Y450[S]	16071008RS00	
7	Bracket :Y Drive Base	030610020000	
8	Y Belt Catcher :No.1 :Y	0F4160070000	
9	Holder :Timing Pulley	0F4210010000	
10	Y Belt Catcher :No.2 :Y	0F4230160010	
11	Side Cover :Y Drive Base	0F4230220000	
12	Bracket :Origin Sensor	0F4230250000	
13	Table Holder :Front L	15212003L000	
14	Table Holder :Front R	15212003R000	
15	Timing Pulley :W15-16	501430020020	
16	Timing Pulley :W15-16	501430060010	
17	Bearing Collar :12mm Dia.	502712020000	
18	Straight Pin :No.4 :10mm Dia.	503104060000	
19	Y-axis Shaft	CX07C3000000	
20	E-ring :7mm Dia.	611100100000	
21	Timing Belt :W15*1305	623200120000	
22	Needle Bearing :HK-1010	634110100000	
23	Rulon Washer :TW-1020	638400090000	
24	Linear Way	660300050000	
25	Card :Magnetic Sensor A	0J4200800000	
26			
27			
28			
29			
30			
31			
32			
33			
34			
35			
36			
37			
38			
39			
40			
41			
42			
43			
44			
45			
46			
47			
48			
49			
50			

Note: As for parts with marks # , * or @, please follow our instructions on Table of Contents in your parts order.



Y-AXIS SPEED REDUCING SYSTEM

MG-10-2

Ref.No.	Description	Part No.	Remark
1	Base :Y Motor	0F4240010000	
2	Timing Pulley :W19-18	501F18010000	
3	Bearing Case :No.3 :15mm Dia.[S]	508315030S00	
4	Bracket :Y Motor	0F4240020000	
5	Bearing Collar :12mm Dia.	502712020000	
6	Pulse Motor :60mm Square :with Sensor[A]	0J6105400A00	
7	Y Shaft :12P*924	QS7103010000	
8	Timing Pulley :W20-63	501F17010000	
9	Stopper Joint :12mm Dia.	504112020000	
10	Timing Belt :W19*270	628300010000	
11			
12			
13			
14			
15			
16			
17			
18			
19			
20			
21			
22			
23			
24			
25			
26			
27			
28			
29			
30			
31			
32			
33			
34			
35			
36			
37			
38			
39			
40			
41			
42			
43			
44			
45			
46			
47			
48			
49			
50			

Note: As for parts with marks # , * or @, please follow our instructions on Table of Contents in your parts order.

(IA01)

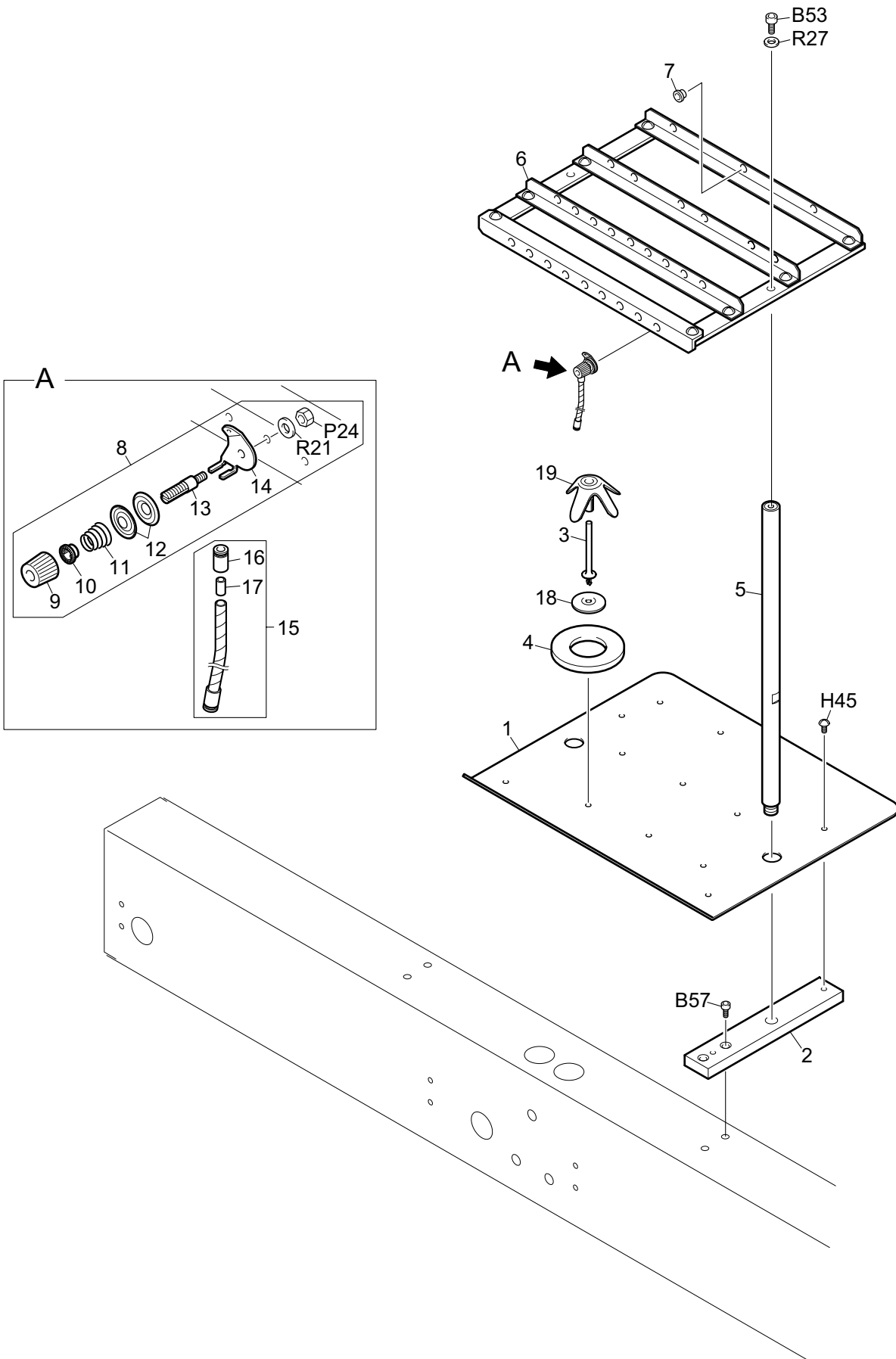
ROTARY-TYPE TENSION BASE

MG-11

Ref.No.	Description	Part No.	Remark
1	Rotary-type Tension Base Set	UN230122####	When ordering this part, please also specify for which head (odd-numbered or even-numbered) it is used.
2	Tension Base :Rotary :03-15-Needle[S]	0C012002@S30	
3	Rotary Tension Disk	0C0230120010	
4	Shaft :Rotary Tension Disk	0C0230130020	
5	Base :Rotary Tension Disk	0C0230190010	
6	Slit Plate :Rotary Disk :ME20-100	0J4201400000	
7	Flange Pin :No.1	503501030000	
8	Roller :Thread Guide Pin	0C0220220000	
9	Knob :Thread Tension :A	0C0220150000	
10	Spring Hook	0C0220080000	
11	Taper Spring :0.55mm Dia.	507725010010	
12	Tension Disk	0C0210020000	
13	Thread Tension Stud	0C0210010000	
14	Straight Pin :No.1 :3mm Dia.	503101100000	
15	Truss Tapping Screw :M3*6	S530030601SD	3P*6
16	Countersunk Tapping Screw :M3*10	S550031001SD	3P*10
17	Upper Thread Guide :Tension Base :06-15-Needle	0C022001@010	
18	Countersunk Tapping Screw	ZZ110308SD00	3P*8
19	Base :Thread Presser :03-15-Needle	0C022018@010	
20	Truss Head Screw :Stepped :M3*4*2	S132030401TD	
21	Taper Spring :0.2mm Dia.	507702010000	
22	Thread Presser	0C0220030010	
23	Lamp Cover :Tension Base	0C0250050000	
24	Card :Tension Base	0J2601900000	
25	Cover :Tension Base :03-15-Needle	0C015002@000	
26	Rail :Thread Breakage Sensor :03-15-Needle	0C023014@000	
27	Bracket :TC Sensor Card	0C0230150000	
28	Card :TC Sensor	0J2601100010	
29	Disk Guard :A :06-15-needle	0C023018@000	
30	Disk Guard :B :06-15-needle	0C023016@000	
31	Bracket: Tension Base: L[S]	0C024003LS00	
32	Bracket: Tension Base: R[S]	0C024003RS00	
33	Thread Guide Plate Set	UN230B00####	
34	Plate Spring :t0.3	507803050000	
35	Thread Course Guide :No.3	0C0220200000	
36			
37			
38			
39			
40			
41			
42			
43			
44			
45			
46			
47			
48			
49			
50			

Note: As for parts with marks # , * or @, please follow our instructions on Table of Contents in your parts order.

(IA01)



THREAD STAND

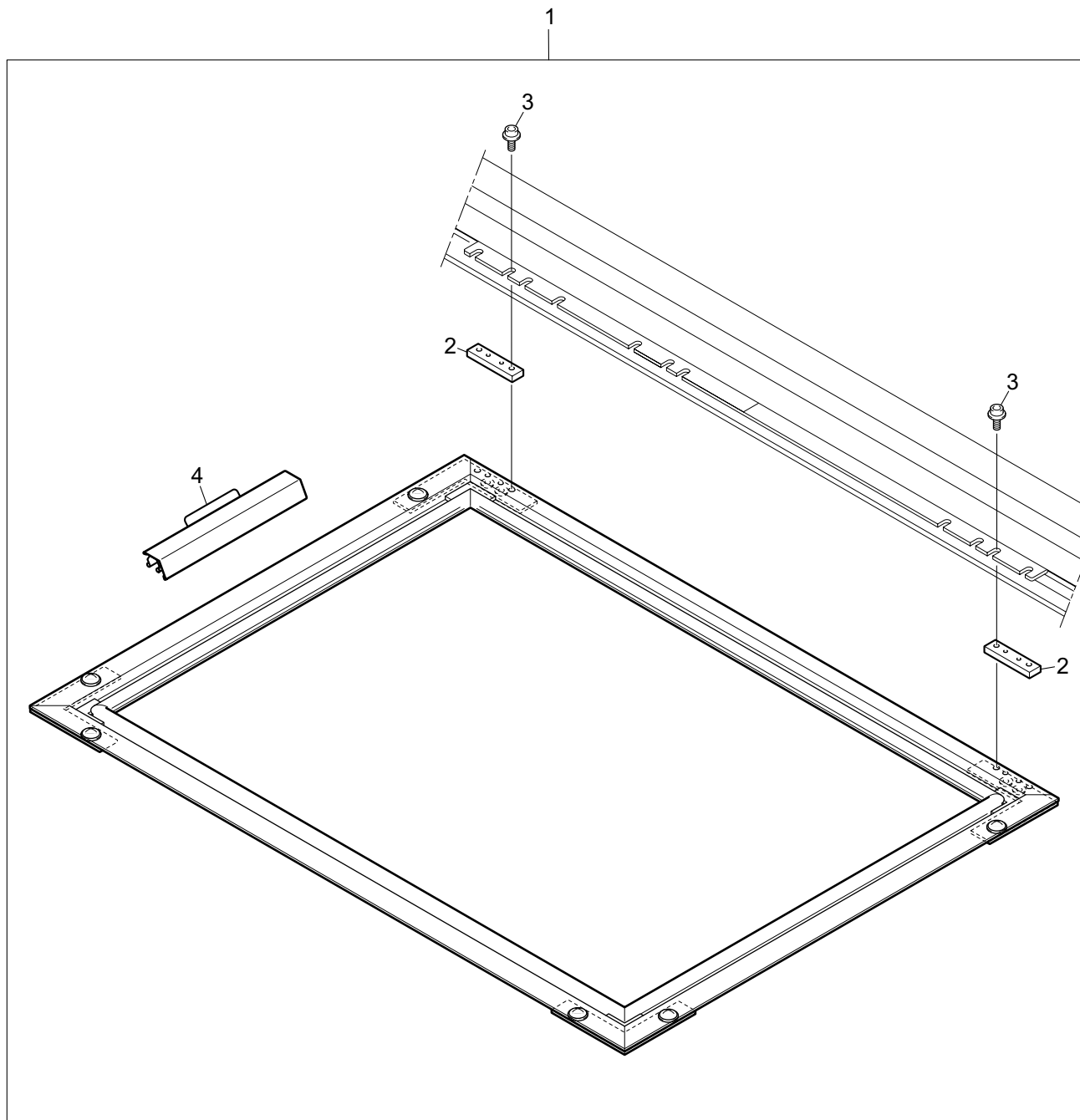
MG-12

Ref.No.	Description	Part No.	Remark
1	Thread Stand Plate :09-Needle	1D8100019000	
2	Base :Thread Stand Plate	0D0110340000	
3	Thread Stand Stud	0D0110350000	
4	Felt :Thread Stand Plate	0D0110020000	
5	Thread Course Support Bar	0D0210120000	
6	Thread Course :06-15-Needle[A]	1E810001@A00	
7	Thread Guide Collar :Black :4mm Dia.	516501030000	Black
7	Thread Guide Collar :Red :4mm Dia.	516501020000	Red
8	No.1 Tension Set	UN150501C000	
9	Knob :Thread Tension :A	0C0220150000	
10	Spring Hook	0C0220080000	
11	Taper Spring :0.55mm Dia.	507725010010	
12	Tension Disk	0C0220160010	
13	Thread Tension Stud	0C0210010000	
14	Thread Tension Guide :Tube	0D0210150020	
15	Spiral Tube :L230[A]	0D0210052A00	
16	Joint :Spiral Tube	0D0210130000	
17	Collar :No.1 :5mm Dia.	0D0210140000	
18	Base :Thread Stand Plate	0D0110360000	
19	Thread Stand Blade	0D0110010000	
20			
21			
22			
23			
24			
25			
26			
27			
28			
29			
30			
31			
32			
33			
34			
35			
36			
37			
38			
39			
40			
41			
42			
43			
44			
45			
46			
47			
48			
49			

Note: As for parts with marks # , * or @, please follow our instructions on Table of Contents in your parts order.

(IA01)

BORDER FRAME (OPTION)



BORDER FRAME (OPTION)

MG-13

Ref.No.	Description	Part No.	Remark
1	Border Frame :0001/450*520S[A]	309152010A00	
2	Spacer :Border Frame	0G0250040010	
3	Hexagon Socket Head Flange Screw	BPM4X06L0000	
4	Border Frame Clip	0G0520@@@010	
5			
6			
7			
8			
9			
10			
11			
12			
13			
14			
15			
16			
17			
18			
19			
20			
21			
22			
23			
24			
25			
26			
27			
28			
29			
30			
31			
32			
33			
34			
35			
36			
37			
38			
39			
40			
41			
42			
43			
44			
45			
46			
47			
48			
49			
50			

Note: As for parts with marks # , * or @, please follow our instructions on Table of Contents in your parts order.

(IA01)

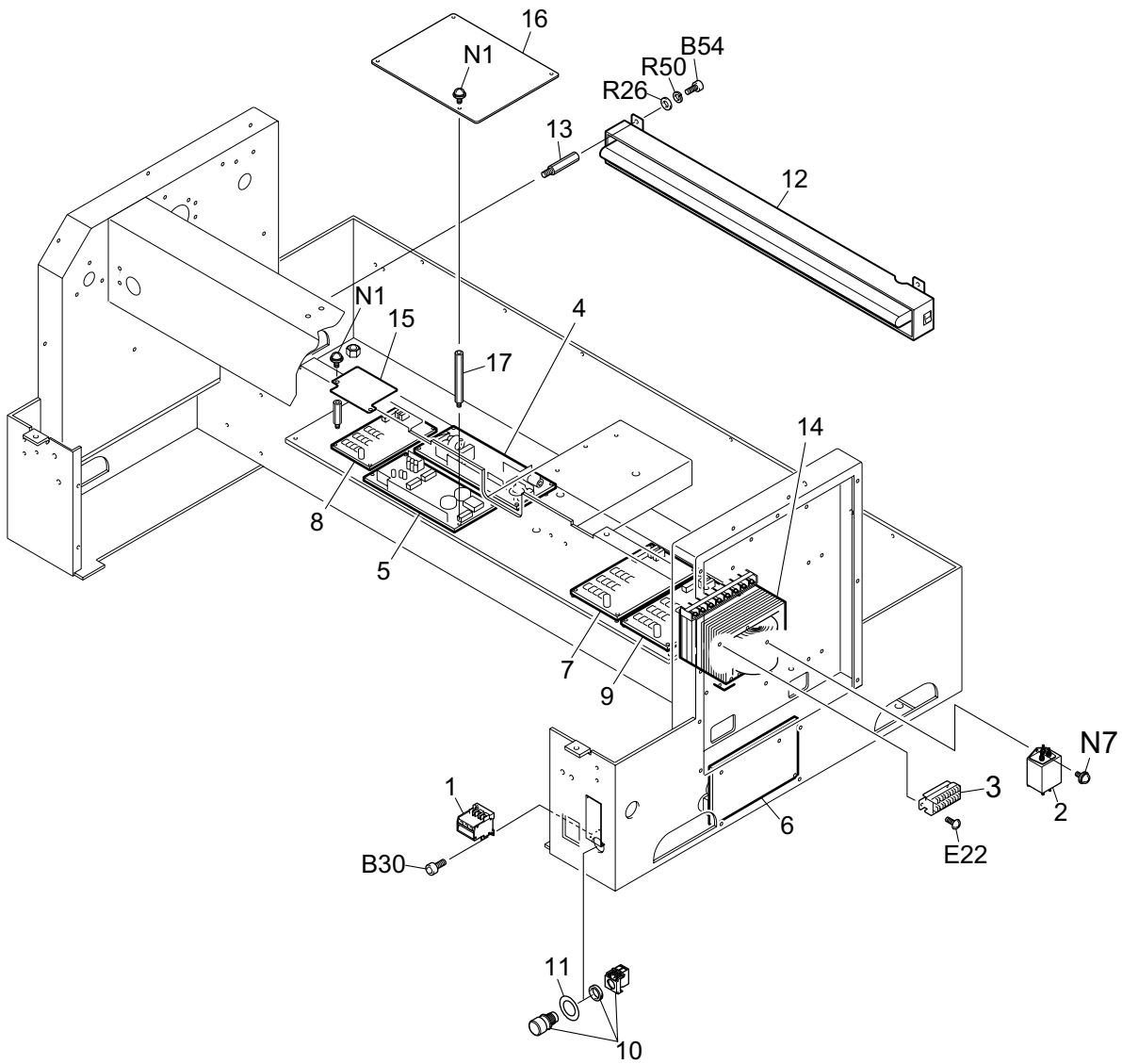
6.5-INCH OPERATION PANEL

MG-14

Ref.No.	Description	Part No.	Remark
1	Operation Panel :Front[S]	0J1404200S00	
2	Operation Panel :Rear	0J1404300000	
3	Shutter :FDD	0J1404400000	
4	Operation Button	0J1404500000	
5	Cover :LCD Panel	0J1404600000	
6	Cover :Lamp	0J1404700000	
7	Base :Card	0J1404800000	
8	Base :HUB	0J1404900000	
9	Base :Operation Panel[S]	0J1405000S00	
10	Cover :FDD	0J1405100000	
11	Bracket :FDD	0J1405200000	
12	Bracket :HUB	0J1405300000	
13	Card :CPU-A	0J2304200000	Japanese OS
13	Card :CPU-B	0J2304201000	English OS
14	Card :Switch	0J3502000000	
15	Card :I/F Connector	0J3200700000	
16	LCD :6.5-inch	641200070000	
17	Inverter :Backlight	645500100000	
18	FDD :YD-8U10	643300060000	
19	Hub :USB :1	647100010000	
20	Card :Capacitor	0J3502600000	
21	Spacer :Hexagon :SQ-6	644500300000	
22	Spacer :Hexagon :2.6SP-12	644500410000	
23	Spacer :Hexagon :SP-30	644500420000	
24	Nylon Washer :M2.6	644500430000	
25	Holder :Controller	030220580000	
26	Base :Controller	030220590000	
27	Spacer :HUB	0J1406200000	
28	Washer :Nylon :M2.6	644500510000	
29	Base :Start Switch/Stop Switch[S]	030230190S00	
30	Clamp :Controller Holder :A	03022064A000	
31	Pipe :Controller	030210300000	
32	Knobbed Screw :No.2 :M5*9[S]	511F05080S00	
33	Switch :Stop	0J0601900000	
34	Controller :X-14-A[A]	0J0203000A00	Japanese OS
34	Controller :X-14-B[A]	0J0203001A00	English OS
35	Switch :Start	0J0601800000	
36	Label :Start/Stop Switch	644500160000	
37	Cover :Controller	030210310000	
38	Washer :Retaining	0J0602000000	
39			
40			
41			
42			
43			
44			
45			
46			
47			
48			

Note: As for parts with marks # , * or @, please follow our instructions on Table of Contents in your parts order.

(IA01)



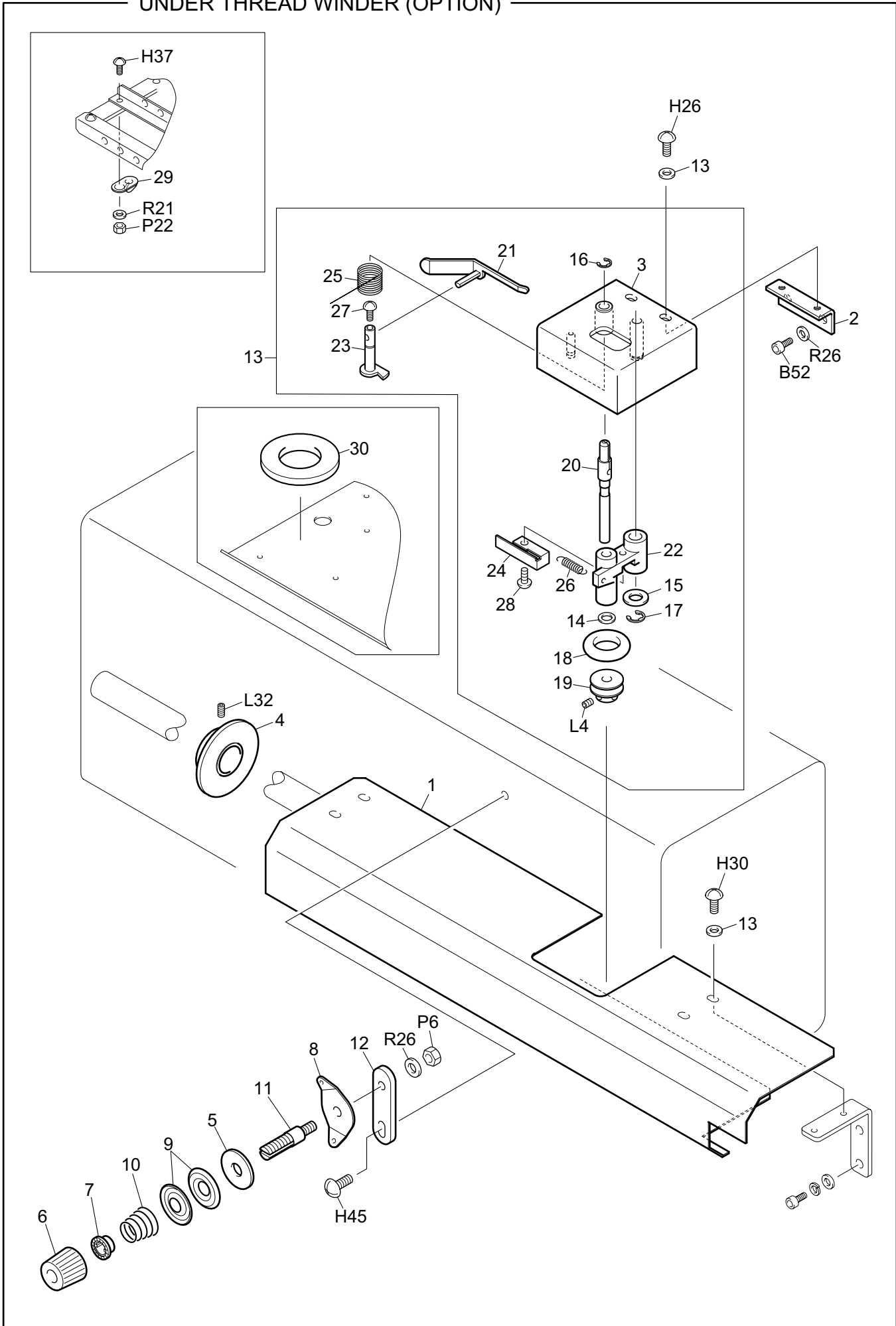
ELECTRICAL PARTS

MG-15

Ref.No.	Description	Part No.	Remark
1	Circuit Protector :Single-phase 10A	646100100000	
2	Noise Filter :Single-phase	641400040000	
3	Terminal Base :5P	643400050000	
4	DC Power Supply :24V	645300191000	
5	DC Power Supply :5V, 12V	645300030000	
6	Card :Power Supply :Single-head	0J2101602000	
7	Card :Machine	0J2502301000	
8	Driver :X12-A[A]	0J0301900A20	
9	Card :Head	0J2702301000	
10	Switch :Emergency Stop	0J0600900000	
11	Name Plate :Emergency Stop Switch	0J5100600000	
12	Fluorescent Lamp :1-lamp 18W :Direct Mount[A]	0J0710400A00	For Export (Excluding North America ETL Spec. and Taiwan)
12	Fluorescent Lamp :30W :Direct Mount[A]	0J0713600A00	Japanese Domestic Use
13	Stud :No.1 :M5-48	505105380000	
14	Transformer :X12	643100140000	ETL/EN/ENA/GES Spec.
15	Cover :Driver Card	0J5101000000	
16	Cover :DC Power Supply	0J5100900000	
17	Stud :No.1 :M3-70	505103050000	
18			
19			
20			
21			
22			
23			
24			
25			
26			
27			
28			
29			
30			
31			
32			
33			
34			
35			
36			
37			
38			
39			
40			
41			
42			
43			
44			
45			
46			
47			
48			
49			

Note: As for parts with marks # , * or @, please follow our instructions on Table of Contents in your parts order.

UNDER THREAD WINDER (OPTION)



UNDER THREAD WINDER (OPTION)

MG-16

Ref.No.	Description	Part No.	Remark
1	Shaft Cover	0L3140010000	
2	Bracket :Under Thread Winder	0L3140020000	
3	Base :Under Thread Winder[S]	0L3140030S00	
4	Pulley :Thread Winder[S]	0L3140070S00	
5	Felt Packing	0C0220040000	
6	Knob :B	0C0220070000	
7	Spring Hook	0C0220080000	
8	Thread Tension Guide	0C0220110000	
9	Tension Disk	0C0220120000	
10	Taper Spring :1.0mm Dia.	507710020000	
11	Thread Course Tension Stud	EF0914000000	
12	Thread Guide Stay	CX11010A0000	
13	Nylon Washer	BPNN04090300	
14	Spacer	BP10P65P05T0	
15	Spacer	BP16P85P08T0	
16	E-ring	BPE500N000000	
17	E-ring	BPE600N000000	
18	Rubber Ring	CX1115100000	
19	Thread Winder Wheel	CX1115200000	
20	Thread Winder Shaft	CX1115300000	
21	Bobbin Presser	CX1115400000	
22	Thread Winder Arm	CX1115500000	
23	Thread Winder Cam Shaft	CX1115600000	
24	Thread Winder Plate Spring	CX1115700000	
25	Thread Winder Cam Shaft Spring	CX1115800000	
26	Thread Winder Arm Spring	CX1115900000	
27	Pan Head Screw	SM86025555CN	SM9/64*40*5.5
28	Pan Head Screw	SM86025680CN	SM11/64*40*8
29	Thread Guide	LE0596000000	
30	Felt :Thread Stand Plate[S]	0D0110050000	
31			
32			
33			
34			
35			
36			
37			
38			
39			
40			
41			
42			
43			
44			
45			
46			
47			
48			
49			
50			

Note: As for parts with marks # , * or @, please follow our instructions on Table of Contents in your parts order.

(IA01)

No.	Part No.	Remark	No.	Part No.	Remark
A	Flat Fillister Head Screw		B20	SS6203180TN0	M3*18
A1	SM15015435CN	1/8*44*3.5	B21	SS6203200TD0	M3*20
A2	SM15015450CN	1/8*44*5	B22	SS6203200TN0	M3*20
A3	SM15015455CN	1/8*44*5.5	B23	SS6203250TN0	M3*25
A4	SM15015460CN	1/8*44*6	B24	SS6203300TN1	M3*30
A5	SM16515530CN	9/64*40*3	B25	SS6204050TD0	M4*5
A6	SM14020540CN	9/64*40*4	B26	SS6204050TN0	M4*5
A7	SM16516540SA	9/64*40*4	B27	SS6204050TD0	M4*6
A8	SM17010540CL	9/64*40*4	B28	SS6204060TN0	M4*6
A9	SM17010540CN	9/64*40*4	B29	SS6204080TD0	M4*8
A10	SM1E515550CN	9/64*40*5	B30	SS6204080TN0	M4*8
A11	SM14020560CN	9/64*40*6	B31	SS6204100TD0	M4*10
A12	SM15525560CN	9/64*40*6	B32	SS6204100TN0	M4*10
A13	SM15526570CN	9/64*40*7	B33	SS6204120TD0	M4*12
A14	SM15020580CN	9/64*40*8	B34	SS6204120TN0	M4*12
A15	SM15530580CN	9/64*40*8	B35	SS6204140TN0	M4*14
A16	SM16025580CN	9/64*40*8	B36	SS6204150TD0	M4*15
A17	SM150205A0CN	9/64*40*10	B37	SS6204150TN0	M4*15
A18	SM150205C0CN	9/64*40*12	B38	SS6204160TN0	M4*16
A19	SM150205F0CN	9/64*40*15	B39	SS6204180TN0	M4*18
A20	SM15422643TN	11/64*40*4.3	B40	SS6204200TD0	M4*20
A21	SM17017670CN	11/64*40*7	B41	SS6204200TN0	M4*20
A22	SM1C035675CN	11/64*40*7.5	B42	SS6204250TD0	M4*25
A23	SM10825690SH	11/64*40*9	B43	SS6204250TN0	M4*25
A24	SM146266B5CN	11/64*40*11.5	B44	SS6204250TN1	M4*25
A25	SM172316C0CN	11/64*40*12	B45	SS6204300TN0	M4*30
A26	SS6003080SC0	M3*8	B46	SS6204350TD0	M4*35
A27	SS6003080SD0	M3*8	B47	SS6204350TN0	M4*35
A28	SS6003100CC0	M3*10	B48	SS6204400TN0	M4*40
A29	SS6004100SC0	M4*10	B49	SS6204450TN0	M4*45
B	Hexagon Socket Head Cap Screw		B50	SS6205060TN0	M5*6
B1	SS6202080TD0	M2*8	B51	SS6205080TD0	M5*8
B2	SS6202100TD0	M2*10	B52	SS6205080TN0	M5*8
B3	SS6276050TN0	M2.6*5	B53	SS6205100TD0	M5*10
B4	SS6203030TN0	M3*3	B54	SS6205100TN0	M5*10
B5	SS6203040TN0	M3*4	B55	SS6205100TP0	M5*10
B6	SS6203050TD0	M3*5	B56	SS6205120TD0	M5*12
B7	SS6203050TN0	M3*5	B57	SS6205120TN0	M5*12
B8	SS6203060TD0	M3*6	B58	SS6205140TN0	M5*14
B9	SS6203060TN0	M3*6	B59	SS6205150MZ0	M5*15
B10	SS6203080MZ0	M3*8	B60	SS6205150TD0	M5*15
B11	SS6203080TD0	M3*8	B61	SS6205150TN0	M5*15
B12	SS6203080TN0	M3*8	B62	SS6205160TN0	M5*16
B13	SS6203100TD0	M3*10	B63	SS6205180TN0	M5*18
B14	SS6203100TN0	M3*10	B64	SS6205200TD0	M5*20
B15	SS6203120TD0	M3*12	B65	SS6205200TN0	M5*20
B16	SS6203120TN0	M3*12	B66	SS6205220TN0	M5*22
B17	SS6203150TD0	M3*15	B67	SS6205230TN0	M5*23
B18	SS6203150TN0	M3*15	B68	SS6205250TN0	M5*25
B19	SS6203160TN0	M3*16	B69	SS6205300TN0	M5*30

B.C.D

No.	Part No.	Remark	No.	Part No.	Remark
B	Hexagon Socket Head	Cap Screw	B119	SS6210300TN0	M10*30
B70	SS6205350TD0	M5*35	B120	SS6210350TN0	M10*35
B71	SS6205350TN0	M5*35	B121	SS6210400TN0	M10*40
B72	SS6205350TN1	M5*35	B122	SS6212300TN0	M12*30
B73	SS6205400TN0	M5*40	B123	SS6212350TN0	M12*35
B74	SS6205450TN0	M5*45	C	Hexagon Bolt	
B75	SS6205500TN0	M5*50	C1	SS9303060SD0	M3*6
B76	SS6205500TN1	M5*50	C2	SS9304080SD0	M4*8
B77	SS6205550TN0	M5*55	C3	SS9304250SD0	M4*25
B78	SS6205600TN0	M5*60	C4	SS9305100SD0	M5*10
B79	SS6205600TN1	M5*60	C5	SS9305150SC0	M5*15
B80	SS6206080TN0	M6*8	C6	SS9305150SD0	M5*15
B81	SS6206090TN0	M6*9	C7	SS9305200SD0	M5*20
B82	SS6206100TN0	M6*10	C8	SS9306150SC0	M6*15
B83	SS6206120TD0	M6*12	C9	SS9306450SD0	M6*45
B84	SS6206120TN0	M6*12	C10	SS9306500SC0	M6*50
B85	SS6206150TD0	M6*15	C11	SS9306500SD0	M6*50
B86	SS6206150TN0	M6*15	C12	SS9306550SD0	M6*55
B87	SS6206180TD0	M6*18	C13	SS9306650SD0	M6*65
B88	SS6206180TN0	M6*18	C14	SS9306750SC0	M6*75
B89	SS6206200TN0	M6*20	C15	SS9308150TN0	M8*15
B90	SS6206250TN0	M6*25	C16	SS9308180TN0	M8*18
B91	SS6206300TN0	M6*30	C17	SS9310300TN0	M10*30
B92	SS6206350TN0	M6*35	C18	SS9310350SC0	M10*35
B93	SS6206400TN0	M6*40	C19	SS9310350TN0	M10*35
B94	SS6206450TN0	M6*45	C20	SS9310400SC1	M10*40
B95	SS6206450TN1	M6*45	C21	SS9312500TN0	M12*50
B96	SS6206500TN1	M6*50	C22	SS9312B00TN0	M12*110
B97	SS6206650TN0	M6*65			
B98	SS6506750TN1	M6*75	D	Round Fillister Head Screw	
B99	SS6206800TN1	M6*80	D1	SM66514540CL	9/64*40*4
B100	SS6206A00TN0	M6*100	D2	SM66015550CL	9/64*40*5
B101	SS6208120TN0	M8*12	D3	SM66015550CN	9/64*40*5
B102	SS6208150TN0	M8*15	D4	SM67018550CN	9/64*40*5
B103	SS6208150TP0	M8*15	D5	SM67020550CN	9/64*40*5
B104	SS6208160TN0	M8*16	D6	SM66015560CL	9/64*40*6
B105	SS6208200TN0	M8*20	D7	SM66015560CN	9/64*40*6
B106	SS6208250TN0	M8*25	D8	SM67020560CL	9/64*40*6
B107	SS6208300TN0	M8*30	D9	SM67020560CN	9/64*40*6
B108	SS6208350TN0	M8*35	D10	SM65817568CN	9/64*40*6.8
B109	SS6208400TN0	M8*40	D11	SM67020580CL	9/64*40*8
B110	SS6208400TN1	M8*40	D12	SM67020580CN	9/64*40*8
B111	SS6208450TN0	M8*45	D13	SM660255A0CN	9/64*40*10
B112	SS6208450TN1	M8*45	D14	SM670205C0CN	9/64*40*12
B113	SS6208500TN0	M8*50	D15	SM67015660CN	11/64*40*6
B114	SS6208600TN0	M8*60	D16	SM67530665CN	11/64*40*6.5
B115	SS6208700TN0	M8*70	D17	SM675306A5CN	11/64*40*10.5
B116	SS6210200TD0	M10*20	D18	SM675306C0CN	11/64*40*12
B117	SS6210200TN0	M10*20	D19	SM675256F0CN	11/64*40*15
B118	SS6210250TN0	M10*25	D20	SM69065CQ5CN	9/32*28*24.5

No.	Part No.	Remark	No.	Part No.	Remark
E	Pan Head Screw		E45	SS4104080SD0	M4*8
D21	SS7003050SD0	M3*5	E46	SS4104100SD0	M4*10
			E47	SS4104120SD0	M4*12
			E48	SS4104150SD0	M4*15
			E49	SS4104180SD0	M4*18
E	Pan Head Screw		E50	SS4104300SD0	M4*30
E1	SS4164014MZ0	M1.4*1.4	E51	SS4104500SD0	M4*50
E2	SS4102020MZ0	M2*2	E52	SS4104600SD1	M4*60
E3	SS4102030MZ0	M2*3	E53	SS4105060SD0	M5*6
E4	SS4102040MZ0	M2*4	E54	SS4105070SD0	M5*7
E5	SS4102080MZ0	M2*8	E55	SS4105080SD0	M5*8
E6	SS4175030MZ0	M2.5*3	E56	SS4105100MZ0	M5*10
E7	SS4175040MZ0	M2.5*4	E57	SS4105100SD0	M5*10
E8	SS4175050MZ0	M2.5*5	E58	SS4105120SD0	M5*12
E9	SS4175080MZ0	M2.5*8	E59	SS4105300SD1	M5*12
E10	SS4175130MZ0	M2.5*13	E60	SS4105150SD0	M5*15
E11	SS4175130SD0	M2.5*13	E61	SS4105450SD1	M5*45
E12	SS4176060SD0	M2.6*6	E62	SS4105500SD1	M5*50
E13	SS4103030MZ0	M3*3	E63	SS4105600SD1	M5*60
E14	SS4103030SD0	M3*3	F	Countersunk Head Screw	
E15	SS4103040CD0	M3*4	F1	SMA55005A0CN	9/64*40*10
E16	SS4103040MZ0	M3*4	F2	SMB7000680CN	11/64*40*8
E17	SS4103040SD0	M3*4	F3	SS1102060SD0	M2*6
E18	SS4103050MZ0	M3*5	F4	SS1103040MZ0	M3*4
E19	SS4103050SD0	M3*5	F5	SS1103040SD0	M3*4
E20	SS4103060MZ0	M3*6	F6	SS1103050MZ0	M3*5
E21	SS4103060SA0	M3*6	F7	SS1103050SD0	M3*5
E22	SS4103060SD0	M3*6	F8	SS1003060SD0	M3*6
E23	SS4103080MZ0	M3*8	F9	SS1103060MZ0	M3*6
E24	SS4103080SA0	M3*8	F10	SS1103060SD0	M3*6
E25	SS4103080SD0	M3*8	F11	SS1103070SD0	M3*7
E26	SS4103100MZ0	M3*10	F12	SS1003080SD0	M3*8
E27	SS4103100SC1	M3*10	F13	SS1103080MZ0	M3*8
E28	SS4103100SD0	M3*10	F14	SS1103080SC0	M3*8
E29	SS4103110SC1	M3*11	F15	SS1103080SD0	M3*8
E30	SS4103120MZ0	M3*12	F16	SS1103080SN0	M3*8
E31	SS4103120SD0	M3*12	F17	SS1103100MZ0	M3*10
E32	SS4103140SA0	M3*14	F18	SS1103100SD0	M3*10
E33	SS4103140SD0	M3*14	F19	SS1103120MZ0	M3*12
E34	SS4103150SD0	M3*15	F20	SS1103120SD0	M3*12
E35	SS4103160SD0	M3*16	F21	SS1103150MZ0	M3*15
E36	SS4103180SD0	M3*18	F22	SS1103160SD0	M3*16
E37	SS4103200SD0	M3*20	F23	SS1104050SD0	M4*5
E38	SS4103300SD0	M3*30	F24	SS1104060MZ0	M4*6
E39	SS4103400SD1	M3*40	F25	SS1104060SD0	M4*6
E40	SS4103500SD1	M3*50	F26	SS1104080MZ0	M4*8
E41	SS4104040SD0	M4*4	F27	SS1104080SD0	M4*8
E42	SS4104050SD0	M4*5	F28	SS1104100MZ0	M4*10
E43	SS4104060MZ0	M4*6	F29	SS1104100SD0	M4*10
E44	SS4104060SD0	M4*6	F30	SS1104120SD0	M4*12

F.G.H.J

No.	Part No.	Remark	No.	Part No.	Remark
<i>F</i>	Countersunk Head Screw		<i>H16</i>	SS0103050SD0	M3*5
<i>F31</i>	SS1104140SD0	M4*14	<i>H17</i>	SS0103060MZ0	M3*6
<i>F32</i>	SS1104150SD0	M4*15	<i>H18</i>	SS0103060SD0	M3*6
<i>F33</i>	SS1104200SD0	M4*20	<i>H19</i>	SS0103060SA0	M3*6
<i>F34</i>	SS1104220SD0	M4*22	<i>H20</i>	SS0103080SD0	M3*8
<i>F35</i>	SS1104250SD0	M4*25	<i>H21</i>	SS0103080SA0	M3*8
<i>F36</i>	SS1105060SD0	M5*6	<i>H22</i>	SS0103100MZ0	M3*10
<i>F37</i>	SS1105080SD0	M5*8	<i>H23</i>	SS0103100SD0	M3*10
<i>F38</i>	SS1105100MZ0	M5*10	<i>H24</i>	SS0103200SD0	M3*20
<i>F39</i>	SS1105100SD0	M5*10	<i>H25</i>	SS0104040MZ0	M4*4
<i>F40</i>	SS1105120SD0	M5*12	<i>H26</i>	SS0104040SD0	M4*4
<i>F41</i>	SS1105150SD0	M5*15	<i>H27</i>	SS0104050MZ0	M4*5
<i>F42</i>	SS1105300SD0	M5*30	<i>H28</i>	SS0104050SD0	M4*5
<i>F43</i>	SS1105350SD0	M5*35	<i>H29</i>	SS0104060MZ0	M4*6
<i>F44</i>	SS1105400SD0	M5*40	<i>H30</i>	SS0104060SD0	M4*6
<i>F45</i>	SS1106150SC0	M6*15	<i>H31</i>	SS0104065SD0	M4*6.5
<i>F46</i>	SS1106150SD0	M6*15	<i>H32</i>	SS0104080MZ0	M4*8
<i>F47</i>	SS1106350SD0	M6*35	<i>H33</i>	SS0104080SD0	M4*8
<i>F48</i>	SS1108120SD0	M8*12	<i>H34</i>	SS0104080MZ2	M4*8
<i>F49</i>	SS1108700TN0	M8*70	<i>H35</i>	SS0104100MZ0	M4*10
			<i>H36</i>	SS0104100SD0	M4*10
			<i>H37</i>	SS0104120SD0	M4*12
<i>G</i>	Round Countersunk Head Screw		<i>H38</i>	SS0104150SD0	M4*15
<i>G1</i>	SMC5000460CL	1/8*44*6	<i>H39</i>	SS0104200SD0	M4*20
<i>G2</i>	SMC5000530CL	9/64*40*3	<i>H40</i>	SS0105050SD0	M5*5
<i>G3</i>	SMC5000535CL	9/64*40*3.5	<i>H41</i>	SS0105060SD0	M5*6
<i>G4</i>	SMC5000540CL	9/64*40*4	<i>H42</i>	SS0105065SD0	M5*6.5
<i>G5</i>	SMC5000560CL	9/64*40*6	<i>H43</i>	SS0105070SD0	M5*7
<i>G6</i>	SMC5000570CL	9/64*40*7	<i>H44</i>	SS0105080MZ0	M5*8
<i>G7</i>	SMC5000595CL	9/64*40*9.5	<i>H45</i>	SS0105080SD0	M5*8
<i>G8</i>	SMC50005C0CL	9/64*40*12	<i>H46</i>	SS0105100MZ0	M5*10
			<i>H47</i>	SS0105100SD0	M5*10
			<i>H48</i>	SS0105120MZ0	M5*12
			<i>H49</i>	SS0105120SD0	M5*12
<i>H</i>	Truss Head Screw		<i>H50</i>	SS0105150SD0	M5*15
<i>H1</i>	SMF6016470CL	1/8*44*7	<i>H51</i>	SS0105200SD0	M5*20
<i>H2</i>	SMF8020530CL	9/64*40*3.5	<i>H52</i>	SS0105250SD0	M5*25
<i>H3</i>	SMF8020540CL	9/64*40*4	<i>H53</i>	SS0105300SD0	M5*30
<i>H4</i>	SME9510540CM	9/64*40*4	<i>H54</i>	SS0105350SD0	M5*35
<i>H5</i>	SMF8020560CL	9/64*40*6	<i>H55</i>	SS0106080SD0	M6*8
<i>H6</i>	SMF8020580CL	9/64*40*8	<i>H56</i>	SS0106100SD0	M6*10
<i>H7</i>	SS0175030MZ0	M2.5*3	<i>H57</i>	SS0106220SD0	M6*22
<i>H8</i>	SS0175030SD0	M2.5*3	<i>H58</i>	SS0106250SD0	M6*25
<i>H9</i>	SS0175040MZ0	M2.5*4	<i>H59</i>	SS0106350SD0	M6*35
<i>H10</i>	SS0175040SA0	M2.5*4	<i>H60</i>	SS0106400SD0	M6*40
<i>H11</i>	SS0175040SD0	M2.5*4			
<i>H12</i>	SS0103030MZ0	M3*3			
<i>H13</i>	SS0103030SD0	M3*3	<i>J</i>	Round Head Screw	
<i>H14</i>	SS0103040SD0	M3*4	<i>J1</i>	SS3102030MZ0	M2*3
<i>H15</i>	SS0103050MZ0	M3*5	<i>J2</i>	SS3103080SD0	M3*8

No.	Part No.	Remark	No.	Part No.	Remark
J	Round Head Screw		L23	SS8204120TN0	M4*12
J3	SS3103080SE0	M3*8	L24	SS8205040TN0	M5*4
J4	SS3103100MZ0	M3*10	L25	SS8205050TN0	M5*5
			L26	SS8205060TN0	M5*6
			L27	SS8205080TN0	M5*8
			L28	SS8205100TN0	M5*10
K	Slotted Set Screw		L29	SS8205120TN0	M5*12
K1	SMK0000435CN	1/8*44*3.5	L30	SS8205150TN0	M5*15
K2	SMK0000560CN	9/64*40*6	L31	SS8206050TN0	M6*5
K3	SMK0000625CN	11/64*40*2.5	L32	SS8206060TN0	M6*6
K4	SMK0000635CN	11/64*40*3.5	L33	SS8206080TN0	M6*8
K5	SMK0000640CN	11/64*40*4	L34	SS8206100TN0	M6*10
K6	SMK0000650CN	11/64*40*5	L35	SS8206180TN0	M6*18
K7	SMK0000A50CN	15/64*28*5	L36	SS8208080TN0	M8*8
K8	SMK0000AA0CN	15/64*28*10	L37	SS8208100TN0	M8*10
K9	SMK0000AF0CN	15/64*28*15	L38	SS8208150TN0	M8*15
K10	SMK0000AH0CN	15/64*28*17			
K11	SMK0000B40CN	1/4*40*4			
K12	SMK0000B45CN	1/4*40*4.5			
K13	SMK0000B50CN	1/4*40*5	M	Hexagon Socket Head Button Screw	
K14	SMK0000B60CN	1/4*40*6	M1	SS3203040SC0	M3*4
K15	SMK0000B80CN	1/4*40*8	M2	SS3204060SC0	M4*6
K16	SMK0000CC0CN	9/32*28*12	M3	SS3204080SC0	M4*8
K17	SS8005060TN0	M5*6	M4	SS3204080SD0	M4*8
			M5	SS3205100SC0	M5*10
			M6	SS3205100SD0	M5*10
			M7	SS3205150SD0	M5*15
L	Hexagon Socket Head Set Screw		M8	SS3208120SC0	M8*12
L1	SMJ0000425CN	1/8*44*2.5	M9	SS3208120SD0	M8*12
L2	SMJ0000430CN	1/8*44*3	M10	SS3208150SD0	M8*15
L3	SMJ0000690CN	11/64*28*9	N	Screw with Washer	
L4	SMJ0000640CN	11/64*40*4	N1	SSA003060000	M3*6
L5	SMJ0000660CN	11/64*40*6	N2	SSA003080000	M3*8
L6	SMJ0000680CN	11/64*40*8	N3	SSA003100000	M3*10
L7	SMJ0000A40CN	15/64*28*4	N4	SSA003150000	M3*15
L8	SMJ0000A90CN	15/64*28*9	N5	SSA003160000	M3*16
L9	SS8275030TN0	M2.5*3	N6	SSA003180000	M3*18
L10	SS8203020TN0	M3*2	N7	SSA004060000	M4*6
L11	SS8203030TN0	M3*3	N8	SSA004080000	M4*8
L12	SS8203040TN0	M3*4	N9	SSA004100000	M4*10
L13	SS8203050TN0	M3*5	N10	SSA004120000	M4*12
L14	SS8203060TN0	M3*6	N11	SSA004550000	M4*55
L15	SS8203080TN0	M3*8	N12	SSA005100000	M5*10
L16	SS8204030TN0	M4*3	N13	SSA005120000	M5*12
L17	SS8204040TN0	M4*4	N14	SSA005140000	M5*14
L18	SS8204050TN0	M4*5	N15	SSA005180000	M5*18
L19	SS8204060TN0	M4*6			
L20	SS8204060TN1	M4*6			
L21	SS8204080TN0	M4*8			
L22	SS8204100TN0	M4*10			

P.R

No.	Part No.	Remark	No.	Part No.	Remark
P	Nut		R	Washer	
P1	SMN046030CNO	1/8*44*6*3	R1	WSP640303MZ0	Plain M1.4*3*0.3t
P2	SMN056020CLO	9/64*40*6*2	R2	WSP023505XZ0	Plain M2*3.5*0.5t
P3	SMN056030CNO	9/64*40*6*3	R3	WSP024303SD0	Plain M2*4.3*0.3t
P4	SMN066020CNO	11/64*40*6*2	R4	WSP765005XB0	Plain M2.6*5*0.5t
P5	SMN066030CNO	11/64*40*6*3	R5	WSP767505XB0	Plain M2.6*7.5*0.5t
P6	SMN067030CNO	11/64*40*7*3	R6	WSP036003XZ0	Plain M3*6*0.3t
P7	SMN167030CNO	11/64*40*7*3	R7	WSP036005SC0	Plain M3*6*0.5t
P8	SSN166XA0000	M1.6 Type 1	R8	WSP036005SD0	Plain M3*6*0.5t
P9	SSN002SD0000	M2 Type 1	R9	WSP037005SD0	Plain M3*7*0.5t
P10	SSN202SD0000	M2 Type 3	R10	WSP038003SD0	Plain M3*8*0.3t
P11	SSN073SD0000	M2.3 Type 1	R11	WSP038005MZ0	Plain M3*8*0.5t
P12	SSN075MZ0000	M2.5 Type 1	R12	WSP038005SC0	Plain M3*8*0.5t
P13	SSN276SD0000	M2.6 Type 3	R13	WSP038005SD0	Plain M3*8*0.5t
P14	SSN003MZ0000	M3 Type 1	R14	WSP038100SD0	Plain M3*8*1t
P15	SSN003SC0000	M3 Type 1	R15	WSP048005SC0	Plain M4*8*0.5t
P16	SSN003SD0000	M3 Type 1	R16	WSP048005SD0	Plain M4*8*0.5t
P17	SSN403SD0000	M3 Thumbscrew Type 2	R17	WSP048008SC0	Plain M4*8*0.8t
P18	SSN203SC0000	M3 Type 3	R18	WSP048008SD0	Plain M4*8*0.8t
P19	SSN203SD0000	M3 Type 3	R19	WSP04A008MZ0	Plain M4*10*0.8t
P20	SSN285SC0000	M3.5 Type 3	R20	WSP04A008SC0	Plain M4*10*0.8t
P21	SSN004SC0000	M4 Type 1	R21	WSP04A008SD0	Plain M4*10*0.8t
P22	SSN004SD0000	M4 Type 1	R22	WSP04C010SC0	Plain M4*12*1t
P23	SSN204SC0000	M4 Type 3	R23	WSP05A008SC0	Plain M5*10*0.8t
P24	SSN204SD0000	M4 Type 3	R24	WSP05A008SD0	Plain M5*10*0.8t
P25	SSN604SD0000	M4 Cap	R25	WSP05C008MZ0	Plain M5*12*0.8t
P26	SSN005SC0000	M5 Type 1	R26	WSP05C008SC0	Plain M5*12*0.8t
P27	SSN005SD0000	M5 Type 1	R27	WSP05C008SD0	Plain M5*12*0.8t
P28	SSN205SC0000	M5 Type 3	R28	WSP06B016SC0	Plain M6*11*1.6t
P29	SSN205SD0000	M5 Type 3	R29	WSP06B508SD0	Plain M6*11.5*0.8t
P30	SSN605SD0000	M5 Cap Screw	R30	WSP06D010SC0	Plain M6*13*1.0t
P31	SSN006SC0000	M6 Type 1	R31	WSP06D010SD0	Plain M6*13*1.0t
P32	SSN006SC1000	M6 Type 1(Left)	R32	WSP06G010SC0	Plain M6*16*1.0t
P33	SSN006SD0000	M6 Type 1	R33	WSP08G012SD0	Plain M8*16*1.2t
P34	SSN006SD1000	M6 Type 1(Left)	R34	WSP08J016SC0	Plain M8*18*1.6t
P35	SSN206SC0000	M6 Type 3	R35	WSP08J016SD0	Plain M8*18*1.6t
P36	SSN008SC0000	M8 Type 1	R36	WSP08J032SC0	Plain M8*18*3.2t
P37	SSN008SD0000	M8 Type 1	R37	WSP08N032SC0	Plain M8*22*3.2t
P38	SSN208SC0000	M8 Type 3	R38	WSP10N016SC0	Plain M10*22*1.6t
P39	SSN208SD0000	M8 Type 3	R39	WSP10S032SC0	Plain M10*26*3.2t
P40	SSN010SC0000	M10 Type 1	R40	WSP10S032SD0	Plain M10*26*3.2t
P41	SSN710CD0000	M10 with Flange	R41	WSP12L520SC0	Plain M12*20.5*2t
P42	SSN710SC0000	M10 with Flange	R42	WSP16Y025SD0	Plain M16*32*2.5t
P43	SSN012SC0000	M12 Type 1	R43	WSS020000KD0	Spring M2
P44	SSN212SC0000	M12 Type 3	R44	WSS760000KC0	Spring M2.6
P45	SSN212SD0000	M12 Type 3	R45	WSS030000KC0	Spring M3
P46	SSN016SD0000	M16 Type 1	R46	WSS030000KD0	Spring M3
P47	SSN216SC0000	M16 Type 3	R47	WSS850000KC0	Spring M3.5
P48	SSN216SD0000	M16 Type 3	R48	WSS040000KC0	Spring M4
P49	SSN020SC0000	M20 Type 1	R49	WSS040000KD0	Spring M4

1st Edition

January, 2005

■ **Manufactured by:**
Tokai Industrial Sewing Machine Co., Ltd.

NO.1800, Ushiyama-cho, Kasugai, Aichi-pre., 486-0901, Japan
Telephone:568-33-1161 Fax:568-33-1191

■ **Distributed by:**
Tajima Industries Ltd.

19-22, Shirakabe, 3-chome, Higashi-ku, Nagoya, 461-0011, Japan
Telephone:52-932-3444 Fax:52-932-2457

■ **Authorized Distributor:**

