

PARTS LIST

MDP-SC

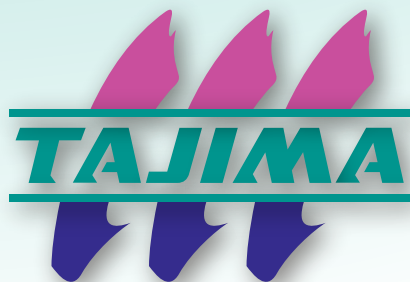


Table of Contents

| | |
|--------------------------------|--------|
| ● GENERAL VIEW | |
| ● FRAMING..... | F1-1 |
| ● MAIN SHAFT DRIVE SYSTEM..... | F1-2 |
| ● CYLINDER BED 1..... | F1-3-1 |
| ● CYLINDER BED 2..... | F1-3-2 |
| ● COLOR CHANGE SYSTEM..... | F1-4 |
| ● ARM 1..... | F1-5-1 |
| ● ARM 2..... | F1-5-2 |
| ● ARM 3..... | F1-5-3 |
| ● NEEDLE BAR CASE 1..... | F1-6-1 |
| ● NEEDLE BAR CASE 2..... | F1-6-2 |
| ● X-AXIS DRIVE SYSTEM..... | F1-7 |
| ● Y-AXIS DRIVE SYSTEM..... | F1-8 |
| ● TENSION BASE..... | F1-9 |
| ● THREAD STAND..... | F1-10 |
| ● TUBULAR GOODS FRAME..... | F1-11 |
| ● OPERATION PANEL..... | F1-12 |
| ● ELECTRICAL PARTS..... | F1-13 |

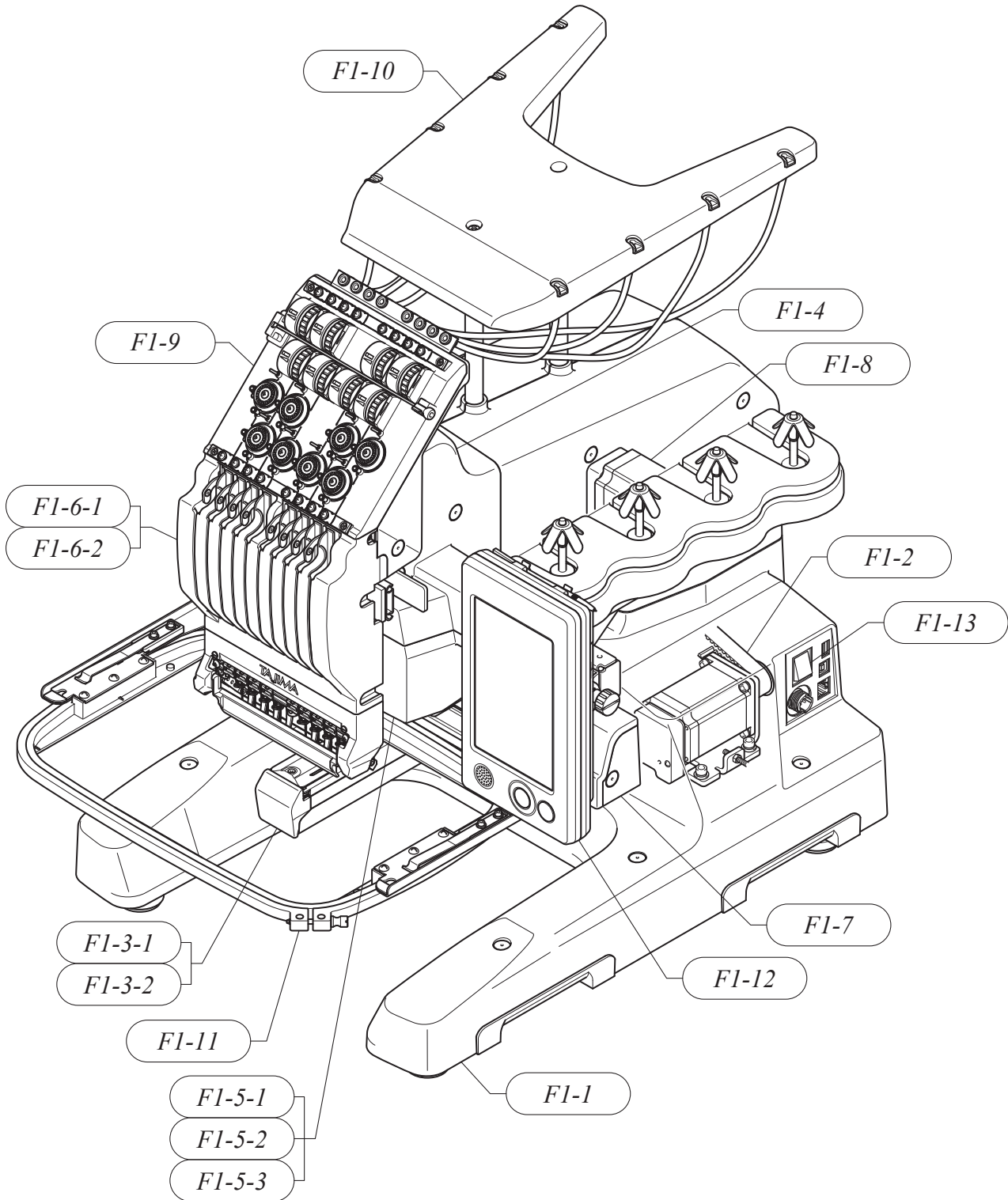
Part Nos. of screws, nuts, washers etc. are listed at the end of volume.

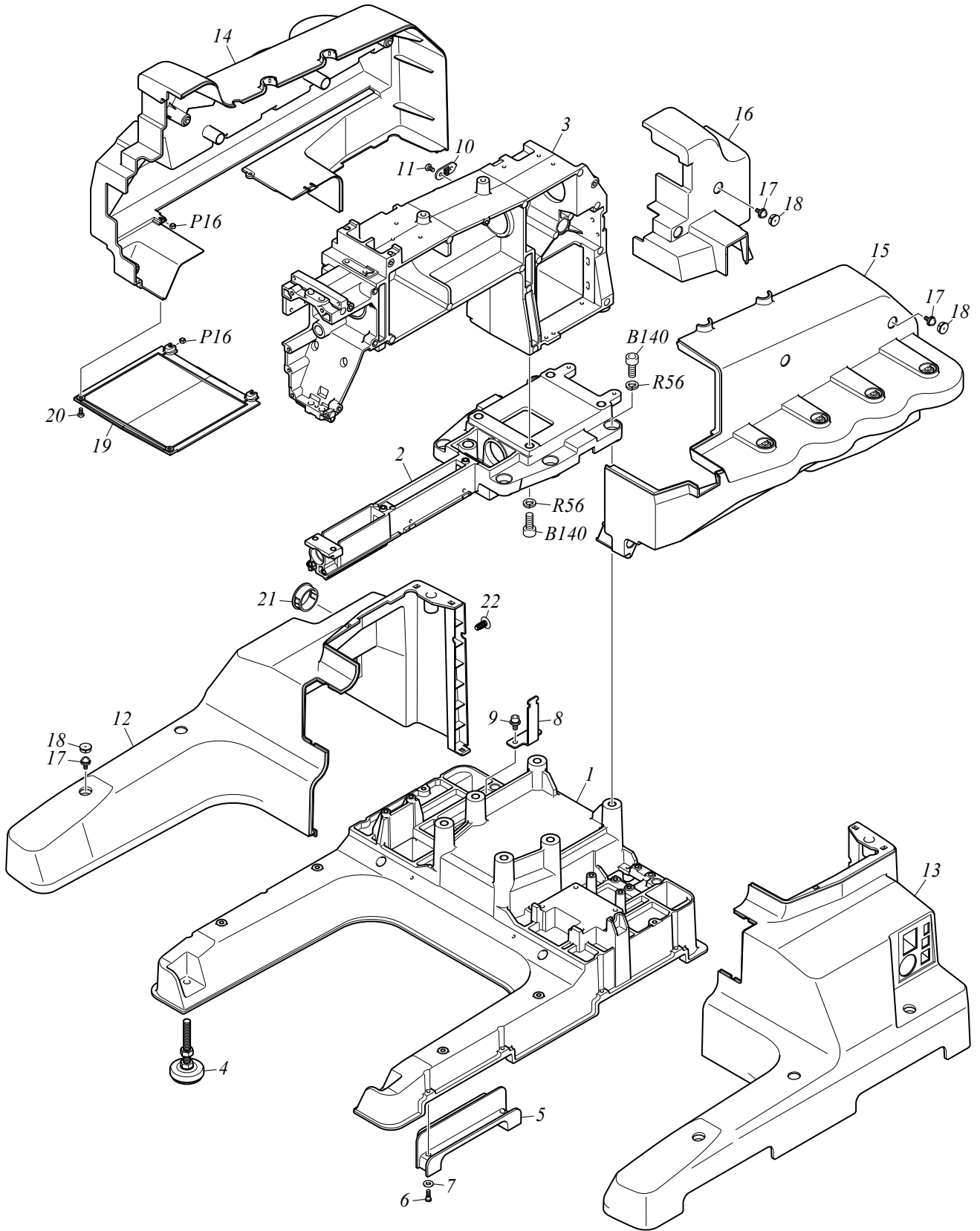
*Regarding the part number that contains description of @, the part differs depending on model, spec. etc.

*When you place an order of such a part, please also inform us of your model, embroidery space and manufacturing number of the machine.

| | | | |
|------------|------------|--------------|-------------|
| Ex. | MDP-S0801C | 200 x 300S | No.F1001234 |
| | [Model] | [Emb. Space] | [Mfg. No.] |

GENERAL VIEW





FRAMING

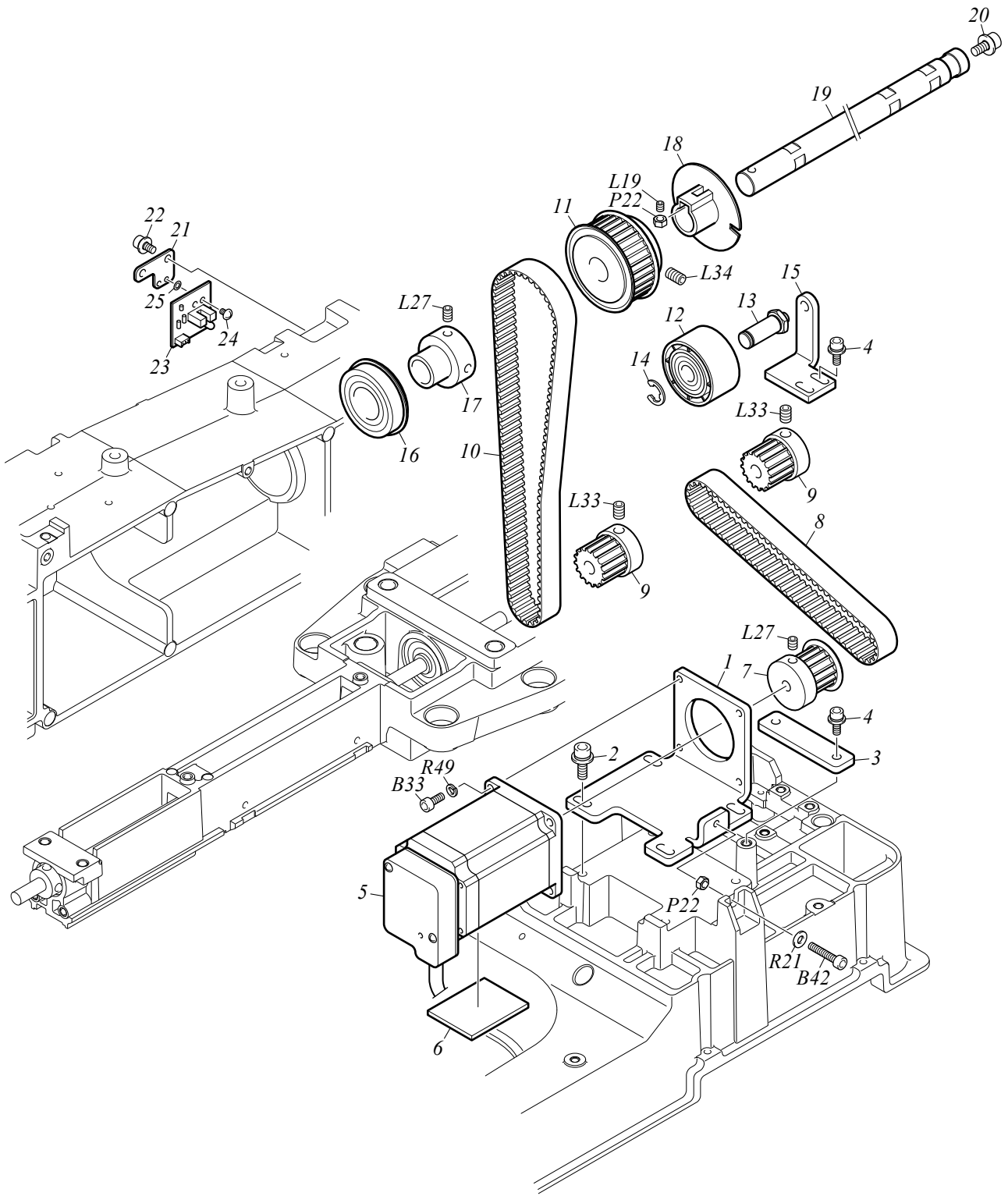
F1-1

| No. | Part Name | Part No. | Remark |
|-----|-----------------------------------|--------------|--------|
| 1 | BASE | 0N33M0010000 | |
| 2 | CYLINDER BED | 0N3350010000 | |
| 3 | ARM | 0N3370040010 | |
| 4 | ADJUSTER :55MM DIA. | 0N33M0060000 | |
| 5 | RUBBER :HANDLE | 0N33M0020000 | |
| 6 | STEPPED SCREW :NO.1 :M4*12 | 0N3380380000 | |
| 7 | PLAIN WASHER :M5*9.5*T0.4 | 0N33P0270000 | |
| 8 | STAY :X MOTOR HARNESS | 0N33E0310000 | |
| 9 | CAP SCREW WITH WASHER :M5*12 | 0N33P025C000 | |
| 10 | CORD CLAMP :B332-0014 | 0N33G1090000 | |
| 11 | BIND HEAD SCREW :M4*8 | 0N33P0158000 | |
| 12 | BOTTOM COVER :L | 0N339015L000 | |
| 13 | BOTTOM COVER :R | 0N339015R000 | |
| 14 | TOP COVER :L | 0N3390030000 | |
| 15 | TOP COVER :R | 0N3390040010 | |
| 16 | TOP SIDE COVER | 0N3390100010 | |
| 17 | PAN HEAD SCREW WITH WASHER :M4*12 | 0N33P026C000 | |
| 18 | CAP :COVER :COOL GRAY 2C | 0N3390130000 | |
| 19 | TOP COVER :BOTTOM | 0N3390140000 | |
| 20 | PAN HEAD SCREW :M3*8 (+-) | 0N33P0108000 | |
| 21 | BUSHING :HARNESS :SB-30 | 0N33G1070000 | |
| 22 | CAP :MAITENANCE HOLE | 0N3390160000 | |
| 23 | | | |
| 24 | | | |
| 25 | | | |
| 26 | | | |
| 27 | | | |
| 28 | | | |
| 29 | | | |
| 30 | | | |
| 31 | | | |
| 32 | | | |
| 33 | | | |
| 34 | | | |
| 35 | | | |
| 36 | | | |
| 37 | | | |
| 38 | | | |
| 39 | | | |
| 40 | | | |
| 41 | | | |
| 42 | | | |
| 43 | | | |
| 44 | | | |
| 45 | | | |
| 46 | | | |
| 47 | | | |
| 48 | | | |
| 49 | | | |
| 50 | | | |

Note: As for parts with mark @, please follow our instructions on Table of Contents in your parts order.

(WM05)

MAIN SHAFT DRIVE SYSTEM



MAIN SHAFT DRIVE SYSTEM

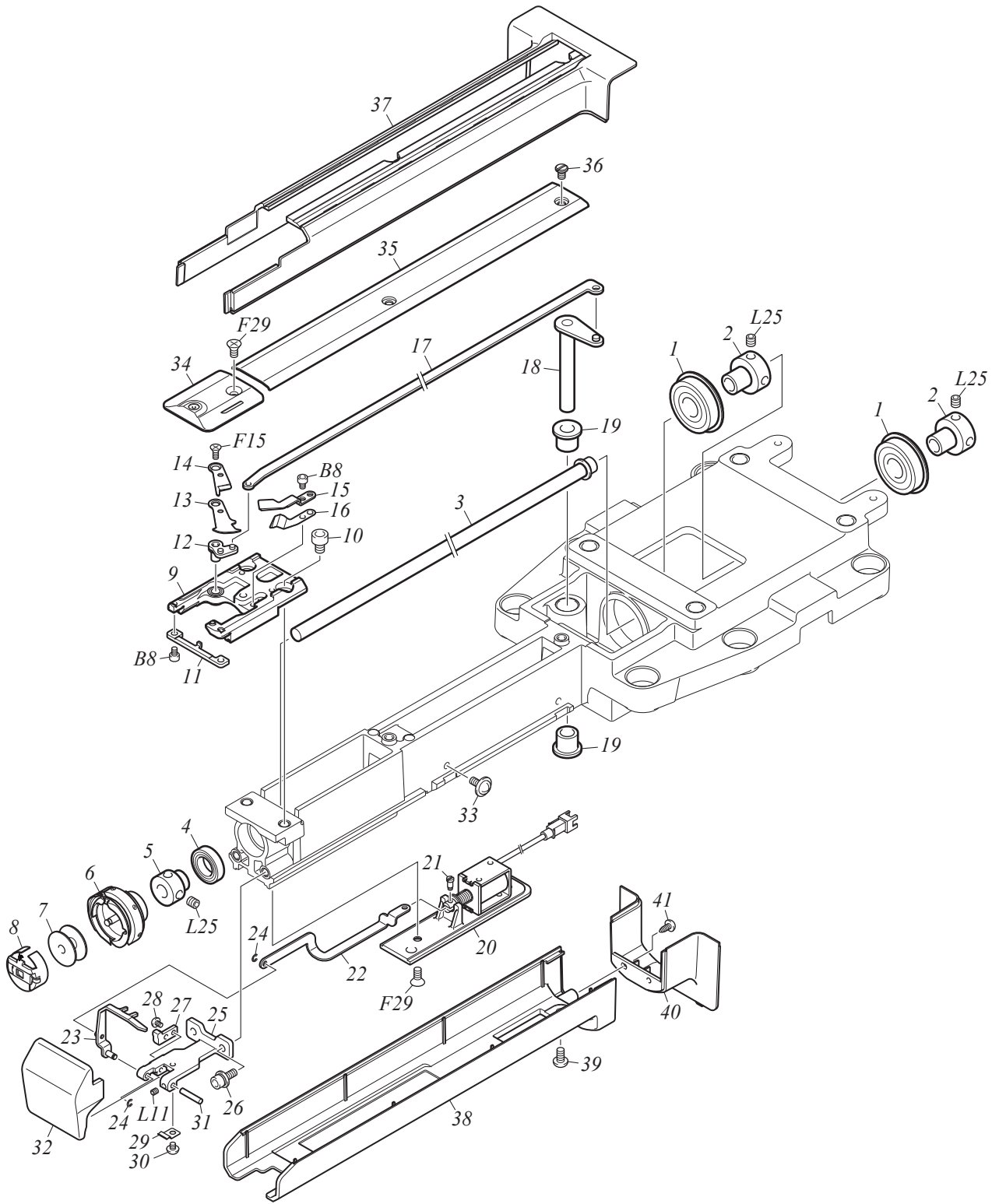
F1-2

| No. | Part Name | Part No. | Remark |
|-----|--|--------------|--------|
| 1 | BRACKET :MAIN SHAFT MOTOR | 0N3370070000 | |
| 2 | CAP SCREW WITH WASHER :M5*16 | 0N33P025G000 | |
| 3 | GUIDE :MAIN MOTOR BASE | 0N3370080000 | |
| 4 | CAP SCREW WITH WASHER :M4*12 | 0N33P023C000 | |
| 5 | PULSE MOTOR :56MM SQUARE 70L :WITH SENSOR[A] | 0N33G0050A00 | |
| 6 | HEAT DISSIPATION SHEET :35*45*T3 | 0N3370830000 | |
| 7 | TIMING PULLEY :W15-16[S] | 0N3370090S00 | |
| 8 | TIMING BELT :150 S5M 340 GB | 0N33Y0010000 | |
| 9 | TIMING PULLEY :W15-16[S] | 0N3350040S00 | |
| 10 | TIMING BELT :150 S5M 525 GB | 0N33Y0020000 | |
| 11 | TIMING PULLEY :W15-32[S] | 0N3370160S00 | |
| 12 | FLAT PULLEY :40MM DIA.[S] | 0N3370140S00 | |
| 13 | SCREW WITH ROLLER PIN :NO.3 :M6 | 0N3370150000 | |
| 14 | E-RING :7MM DIA. | 0N33Y0197000 | |
| 15 | TENSION BASE :MAIN SHAFT BELT | 0N3370130000 | |
| 16 | BEARING :6004ZZNR | 0N33Y0150000 | |
| 17 | BEARING COLLAR :14.72MM DIA. | 0N3370050000 | |
| 18 | SENSOR PLATE :NO.2 | 0N3370200000 | |
| 19 | UPPER SHAFT | 0N3370190000 | |
| 20 | CAP SCREW WITH WASHER :M5*12 | 0N33P025C000 | |
| 21 | BASE :CARD | 0N3370210000 | |
| 22 | CAP SCREW WITH WASHER :M4*10 | 0N33P023A000 | |
| 23 | CARD :PHOTO-INTERRUPTER | 0N33G1120000 | |
| 24 | PAN HEAD SCREW :M3*4 (+-) | 0N33P0104000 | |
| 25 | COLLAR :3.1*5.4*T0.13 | 0N3370860000 | |
| 26 | | | |
| 27 | | | |
| 28 | | | |
| 29 | | | |
| 30 | | | |
| 31 | | | |
| 32 | | | |
| 33 | | | |
| 34 | | | |
| 35 | | | |
| 36 | | | |
| 37 | | | |
| 38 | | | |
| 39 | | | |
| 40 | | | |
| 41 | | | |
| 42 | | | |
| 43 | | | |
| 44 | | | |
| 45 | | | |
| 46 | | | |
| 47 | | | |
| 48 | | | |
| 49 | | | |
| 50 | | | |

Note: As for parts with mark @, please follow our instructions on Table of Contents in your parts order.

(WM05)

CYLINDER BED 1



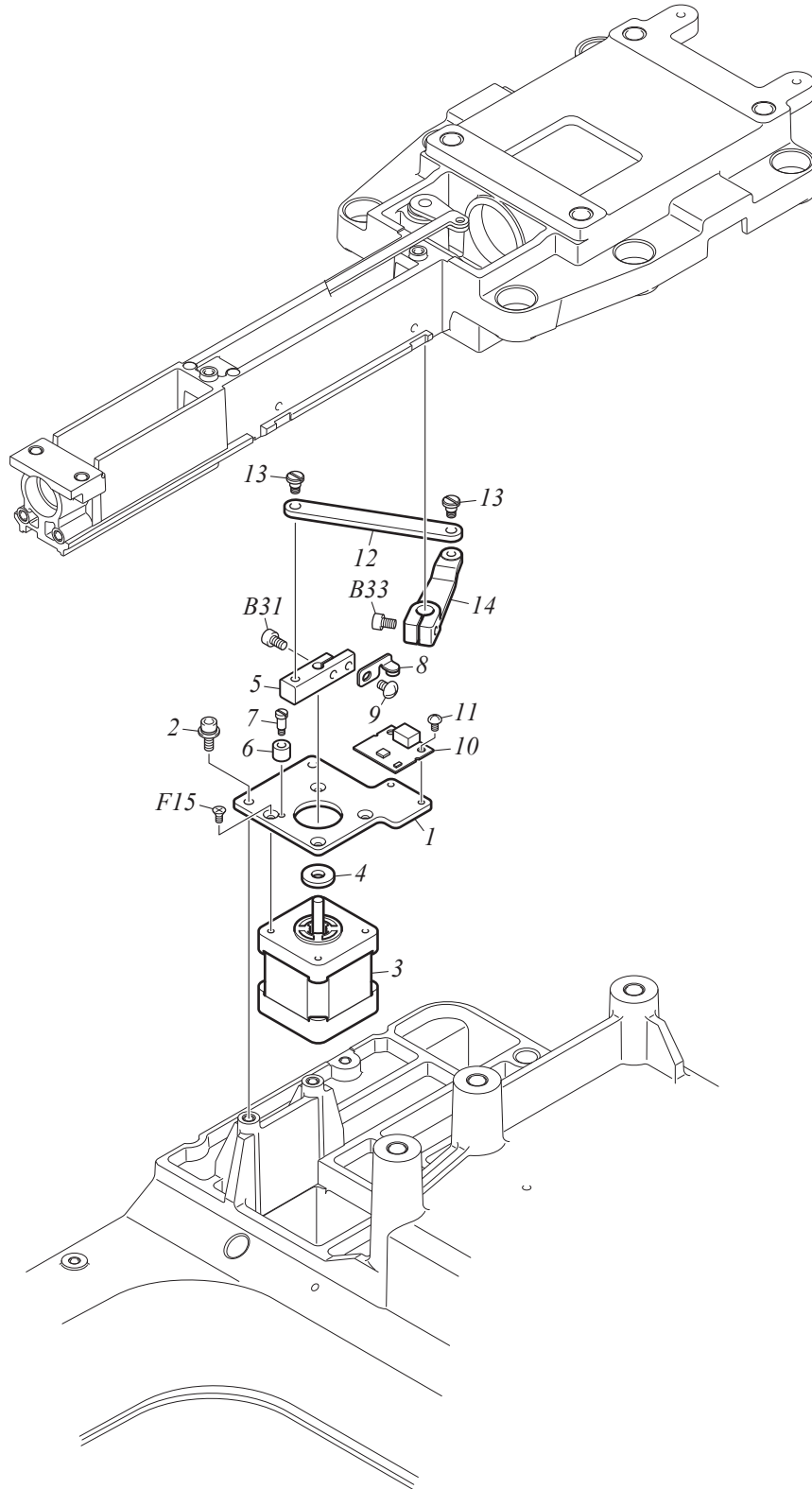
CYLINDER BED 1

F1-3-1

| No. | Part Name | Part No. | Remark |
|-----|--|--------------|--------|
| 1 | BEARING :6201ZZNR | 0N33Y0170000 | |
| 2 | BEARING COLLAR :7.94MM DIA. | 0N3350030000 | |
| 3 | HOOK :SHAFT[S] | 0N3350060S00 | |
| 4 | BEARING :6801ZZ | 0N33Y0160000 | |
| 5 | BEARING COLLAR :7.94MM DIA. | 0N3350020000 | |
| 6 | ROTARY HOOK :REGULAR ROTARY HOOK 13013-201 | 0N3350250000 | |
| 7 | BOBBIN :REGULAR ROTARY HOOK | 0N3350270000 | |
| 8 | BOBBIN CASE :REGULAR ROTARY HOOK :STANDARD | 0N3350260000 | |
| 9 | NEEDLE PLATE BRACKET[S] | 0N3350080S10 | |
| 10 | HEXAGON SOCKET HEAD CAP SCREW :M5*6 | 0N33P0056000 | |
| 11 | ROTARY HOOK SUPPORT | 0N3350240000 | |
| 12 | LEVER SHAFT :KNIFE[A] | 0N33D0120A00 | |
| 13 | THREAD SEPARATING :DIRECT MOVEMENT | 0N33D0180000 | |
| 14 | MOVABLE KNIFE :DIRECT MOVEMENT | 0N33D0170010 | |
| 15 | FIXED KNIFE :DIRECT MOVEMENT | 0N33D0200000 | |
| 16 | UNDER THREAD PRESSER | 0N33D0190000 | |
| 17 | CONNECTING PLATE :KNIFE | 0N33D0110000 | |
| 18 | LEVER :KNIFE CONNECTING PLATE[S] | 0N33D0070S00 | |
| 19 | OIL-BUSHING :NO.2 :8MM DIA. | 0N3370060000 | |
| 20 | SOLENOID :PICKER[A] | 0N3350280A00 | |
| 21 | STEPPED SCREW :NO.1 :M2.5*6 | 0N3350120000 | |
| 22 | CONNECTING PLATE :PICKER | 0N3350150000 | |
| 23 | PICKER[S] | 0N3350160S00 | |
| 24 | E-RING :2MM DIA. | 0N33Y0192000 | |
| 25 | HOLDER :PICKER | 0N3350230000 | |
| 26 | CAP SCREW WITH WASHER :M4*12 | 0N33P023C000 | |
| 27 | STOPPER :PICKER | 0N3350200000 | |
| 28 | PAN HEAD SCREW :M2.5*4 | 0N33P0084000 | |
| 29 | PLATE SPRING :ROTARY HOOK COVER :T0.3 | 0N3350210000 | |
| 30 | PAN HEAD SCREW :M3*3 (+-) | 0N33P0103000 | |
| 31 | STRAIGHT PIN :NO.1 :3MM DIA. | 0N3350220000 | |
| 32 | ROTARY HOOK COVER | 0N3390020000 | |
| 33 | PAN HEAD FLANGE SCREW :M4*10 | 0N33P013A000 | |
| 34 | NEEDLE PLATE :2MM DIA. | 0N3350070000 | |
| 35 | COVER :CYLINDER :FRONT | 0N3390010000 | |
| 36 | FLAT FILLISTER HEAD SCREW :M4*5.5 (6*1.5) | 0N3370880000 | |
| 37 | COVER :CYLINDER BED :TOP | 0N3390090000 | |
| 38 | COVER :CYLINDER BED :BOTTOM | 0N3390070000 | |
| 39 | BIND HEAD SCREW :M4*8 | 0N33P0158000 | |
| 40 | COVER :CYLINDER BED :BASE | 0N3390080000 | |
| 41 | TRUSS HEAD TAPPING SCREW :3P*10 | 0N33P016A000 | |
| 42 | | | |
| 43 | | | |
| 44 | | | |
| 45 | | | |
| 46 | | | |
| 47 | | | |
| 48 | | | |
| 49 | | | |
| 50 | | | |

Note: As for parts with mark @, please follow our instructions on Table of Contents in your parts order.

(WM05)



CYLINDER BED 2

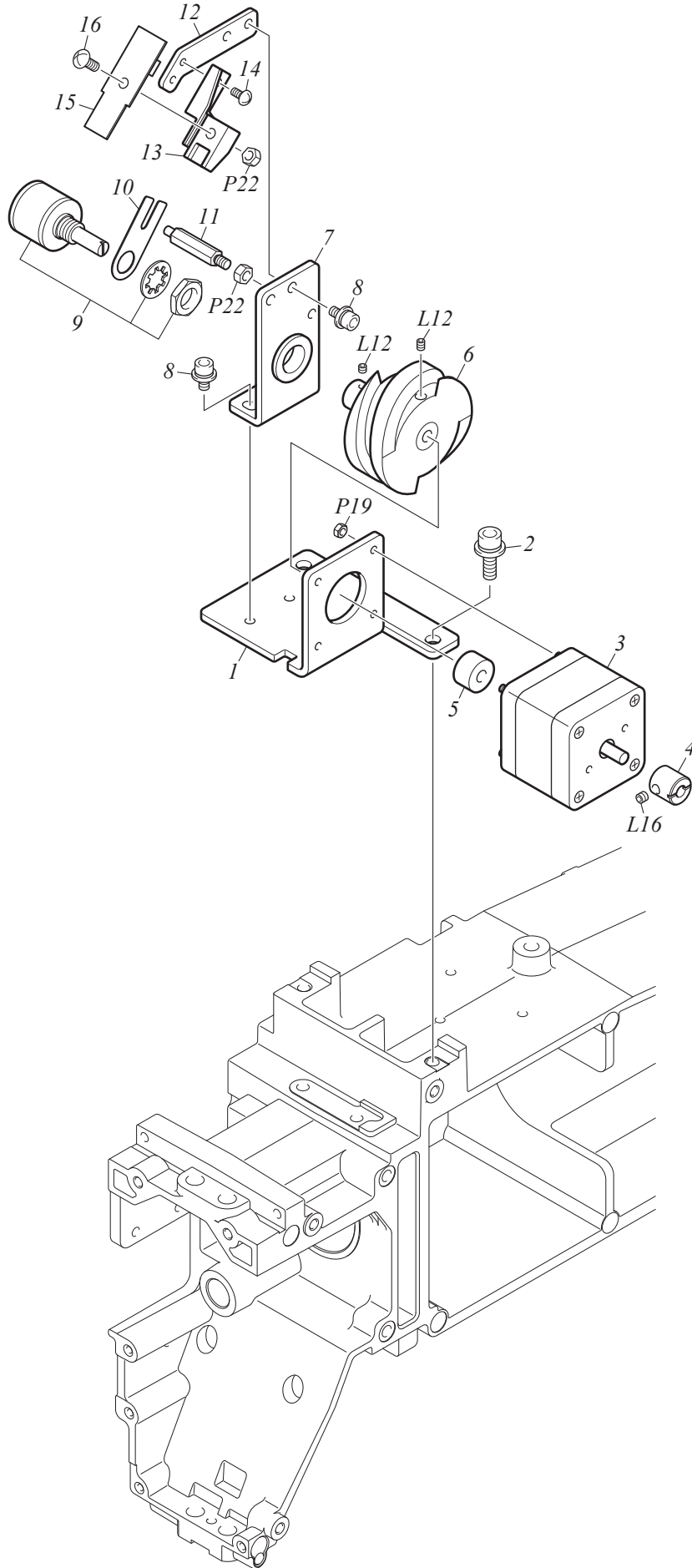
F1-3-2

| No. | Part Name | Part No. | Remark |
|-----|--------------------------------------|--------------|--------|
| 1 | BRACKET :ATH MOTOR | 0N33D0010000 | |
| 2 | CAP SCREW WITH WASHER :M4*12 | 0N33P023C000 | |
| 3 | PULSE MOTOR :42MM SQUARE :DOUBLE-END | 0N33G0020000 | |
| 4 | PLASTIC WASHER :6*15*T2.5 | 0N33D0020000 | |
| 5 | LEVER :ATH | 0N33D0030000 | |
| 6 | DAMPER RING :4MM DIA. | 0N33D0220000 | |
| 7 | STEPPED SCREW :NO.1 :M3*10 | 0N33D0230000 | |
| 8 | SENSOR PLATE :NO.1[S] | 0N33D0210S00 | |
| 9 | TRUSS HEAD SCREW :M4*6 (+-) | 0N33P0046000 | |
| 10 | CARD :MAGNETIC SENSOR A | 0N33G0460000 | |
| 11 | PAN HEAD SCREW :M3*4 (+-) | 0N33P0104000 | |
| 12 | CONNECTING PLATE :5MM DIA. P75 T3.2 | 0N33D0040000 | |
| 13 | STEPPED SCREW :NO.1 :M4*6.9 | 0N33D0050000 | |
| 14 | LEVER :KNIFE CONNECTING PLATE SHAFT | 0N33D0060000 | |
| 15 | | | |
| 16 | | | |
| 17 | | | |
| 18 | | | |
| 19 | | | |
| 20 | | | |
| 21 | | | |
| 22 | | | |
| 23 | | | |
| 24 | | | |
| 25 | | | |
| 26 | | | |
| 27 | | | |
| 28 | | | |
| 29 | | | |
| 30 | | | |
| 31 | | | |
| 32 | | | |
| 33 | | | |
| 34 | | | |
| 35 | | | |
| 36 | | | |
| 37 | | | |
| 38 | | | |
| 39 | | | |
| 40 | | | |
| 41 | | | |
| 42 | | | |
| 43 | | | |
| 44 | | | |
| 45 | | | |
| 46 | | | |
| 47 | | | |
| 48 | | | |
| 49 | | | |
| 50 | | | |

Note: As for parts with mark @, please follow our instructions on Table of Contents in your parts order.

(WM05)

COLOR CHANGE SYSTEM



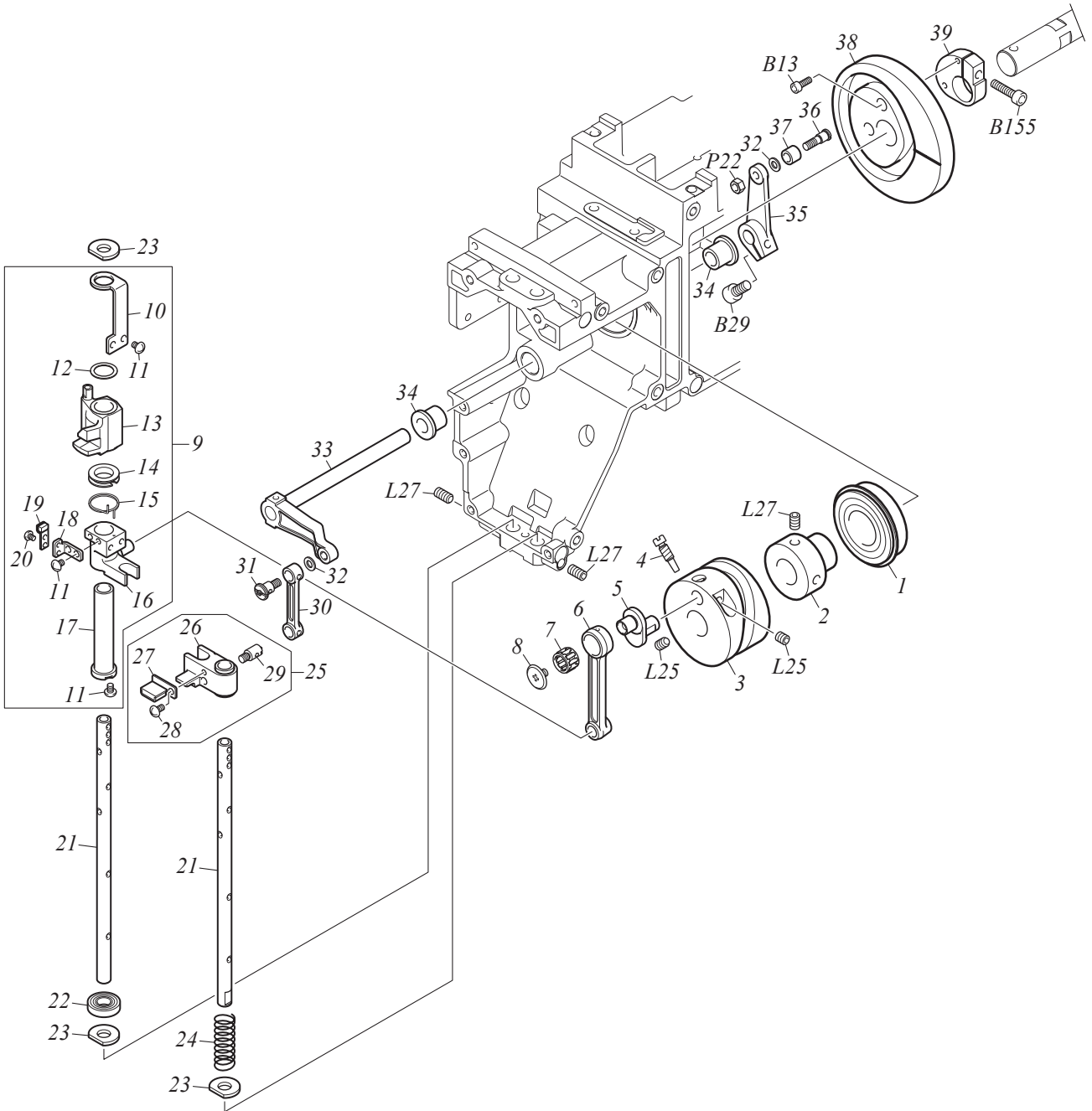
COLOR CHANGE SYSTEM

F1-4

| No. | Part Name | Part No. | Remark |
|-----|--|--------------|--------|
| 1 | BASE :CHANGE MOTOR | 0N3360020000 | |
| 2 | CAP SCREW WITH WASHER :M5*16 | 0N33P025G000 | |
| 3 | PULSE MOTOR :42MM SQUARE[T] | 0N33G0010T00 | |
| 4 | COLLAR :5MM DIA. | 0N3360110000 | |
| 5 | COLLAR :NO.1 :5.1MM DIA. | 0N3370680000 | |
| 6 | CAM :CHANGE[S] | 0N336007ZS00 | |
| 7 | BEARING CASE :CHANGE CAM[S] | 0N3360030S00 | |
| 8 | CAP SCREW WITH WASHER :M4*8 (W8P*T0.8) | 0N33P0240010 | |
| 9 | POTENTIOMETER | 0N33G0430000 | |
| 10 | BRACKET :POTENTIOMETER | 0N3360060000 | |
| 11 | STUD :NO.4 :M4-27.5 | 0N3360040000 | |
| 12 | SENSOR ARM | 0N3360090000 | |
| 13 | BASE :CARD | 0N3360100010 | |
| 14 | TRUSS HEAD SCREW :M3*6 | 0N33P0026000 | |
| 15 | CARD :TC SENSOR :MAGNETIC TYPE | 0N33G0410000 | |
| 16 | BIND HEAD SCREW :M4*8 | 0N33P0158000 | |
| 17 | | | |
| 18 | | | |
| 19 | | | |
| 20 | | | |
| 21 | | | |
| 22 | | | |
| 23 | | | |
| 24 | | | |
| 25 | | | |
| 26 | | | |
| 27 | | | |
| 28 | | | |
| 29 | | | |
| 30 | | | |
| 31 | | | |
| 32 | | | |
| 33 | | | |
| 34 | | | |
| 35 | | | |
| 36 | | | |
| 37 | | | |
| 38 | | | |
| 39 | | | |
| 40 | | | |
| 41 | | | |
| 42 | | | |
| 43 | | | |
| 44 | | | |
| 45 | | | |
| 46 | | | |
| 47 | | | |
| 48 | | | |
| 49 | | | |
| 50 | | | |

Note: As for parts with mark @, please follow our instructions on Table of Contents in your parts order.

(WM05)



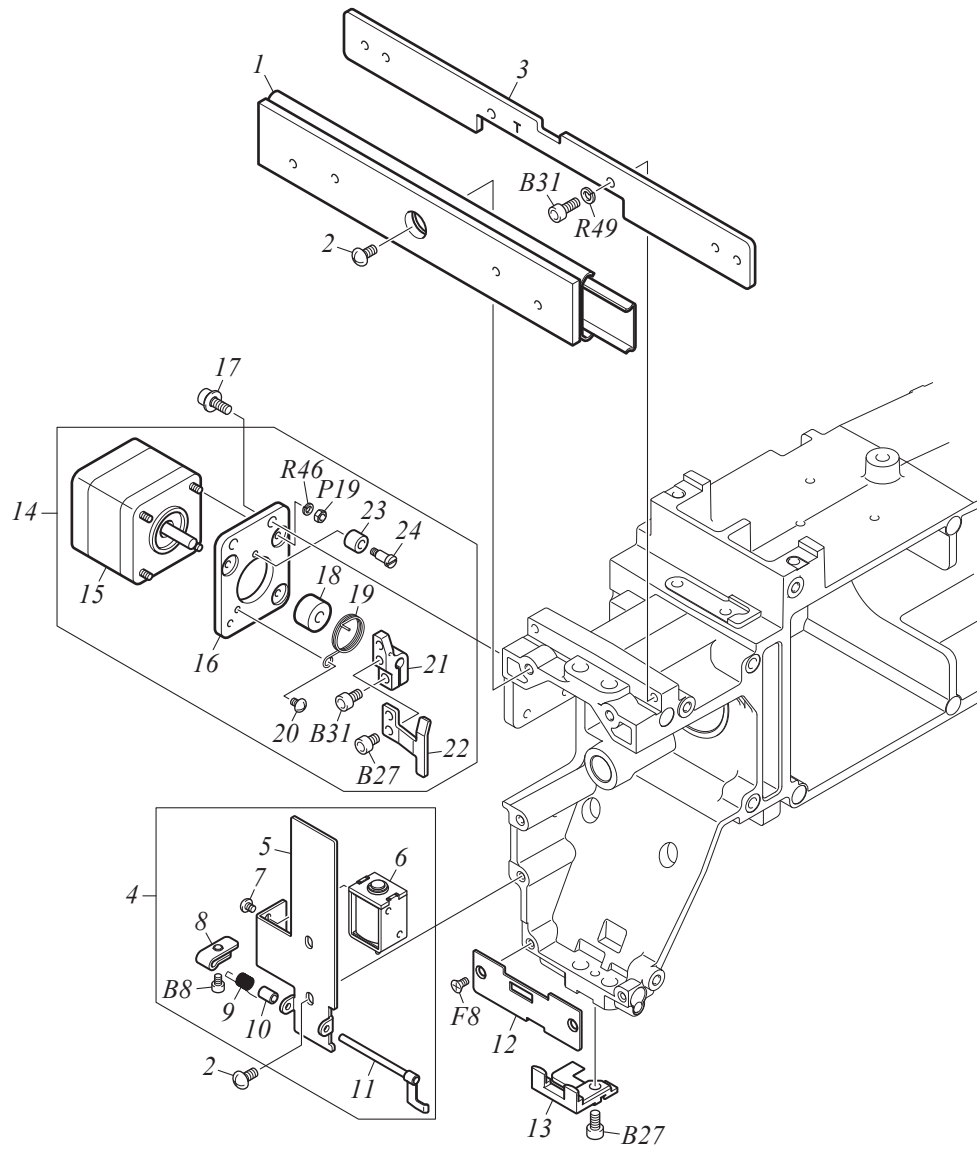
ARM 1

F1-5-1

| No. | Part Name | Part No. | Remark |
|-----|--|--------------|--------|
| 1 | BEARING :6004ZZNR | 0N33Y0150000 | |
| 2 | BEARING COLLAR :14.72MM DIA. | 0N3370050000 | |
| 3 | CAM :TAKE-UP LEVER | 0N3370240000 | |
| 4 | FLAT FILLISTER HEAD SCREW :CAM STOPPER | 0N3370250000 | |
| 5 | CRANK | 0N3370260000 | |
| 6 | CONNECTING ROD :TAKE-UP LEVER DRIVE CAM | 0N3370280000 | |
| 7 | NEEDLE CAGE :KT8128 | 0N33Y0030000 | |
| 8 | RIGHT-HAND COUNTERSUNK HEAD SCREW | 0N3370270000 | |
| 9 | NEEDLE BAR RECIPROCATOR[A] | 0N3370330A00 | |
| 10 | STOPPER :NEEDLE BAR RECIPROCATOR | 0N3370380000 | |
| 11 | PAN HEAD SCREW :M3*4 (+-) | 0N33P0104000 | |
| 12 | PLAIN WASHER :10.3*14*T0.5 | 0N3370400000 | |
| 13 | NEEDLE BAR RECIPROCATOR[S] | 0N3370330S00 | |
| 14 | HOLDER :JUMP SPRING | 0N3370320000 | |
| 15 | TORSION SPRING :0.8MM DIA. | 0N3370410000 | |
| 16 | RECIPROCATING SLIDE BLOCK | 0N3370370000 | |
| 17 | PLASTIC BUSHING :NO.2 :7.24MM DIA. | 0N3370020000 | |
| 18 | BASE :DAMPER BRACKET | 0N3370390000 | |
| 19 | DAMPER BRACKET :NEEDLE BAR RECIPROCATOR[S] | 0N3370360S00 | |
| 20 | PAN HEAD SCREW :M2.5*3 | 0N33P0083000 | |
| 21 | NEEDLE BAR DRIVE SHAFT[S] | 0N3370290S00 | |
| 22 | GUIDE :NEEDLE BAR CASE[S] | 0N3370010S00 | |
| 23 | FELT :NEEDLE BAR DRIVE SHAFT | 0N3370310000 | |
| 24 | COMPRESSION SPRING :0.7MM DIA. | 0N3370420000 | |
| 25 | PRESSER FOOT RECIPROCATOR[A] | 0N3370430A00 | |
| 26 | PRESSER FOOT RECIPROCATOR[S] | 0N3370430S00 | |
| 27 | DAMPER BRACKET :PRESSER FOOT RECIPROCATOR[S] | 0N3370460S00 | |
| 28 | PAN HEAD SCREW :M3*4 (+-) | 0N33P0104000 | |
| 29 | SCREW WITH PIN :NO.3 :M4-7.5[S] | 0N3370440S00 | |
| 30 | CONNECTING ROD :PRESSER FOOT | 0N3370470000 | |
| 31 | STEPPED SCREW :NO.2 :M4*12[S] | 0N3370480S00 | |
| 32 | PLAIN WASHER :4*7.5*T0.8 | 0N3370520000 | |
| 33 | LEVER :PRESSER FOOT[S] | 0N3370490S00 | |
| 34 | OIL-BUSHING :NO.2 :8MM DIA. | 0N3370060000 | |
| 35 | LEVER :PRESSER FOOT CAM | 0N3370650000 | |
| 36 | STEPPED SCREW :NO.1 :M4*10 | 0N3370630000 | |
| 37 | ROLLER :5*8*5 | 0N3370640000 | |
| 38 | CAM :PRESSER FOOT | 0N3370220000 | |
| 39 | BOSS :PRESSER FOOT CAM | 0N3370230000 | |
| 40 | | | |
| 41 | | | |
| 42 | | | |
| 43 | | | |
| 44 | | | |
| 45 | | | |
| 46 | | | |
| 47 | | | |
| 48 | | | |
| 49 | | | |
| 50 | | | |

Note: As for parts with mark @, please follow our instructions on Table of Contents in your parts order.

(WM05)



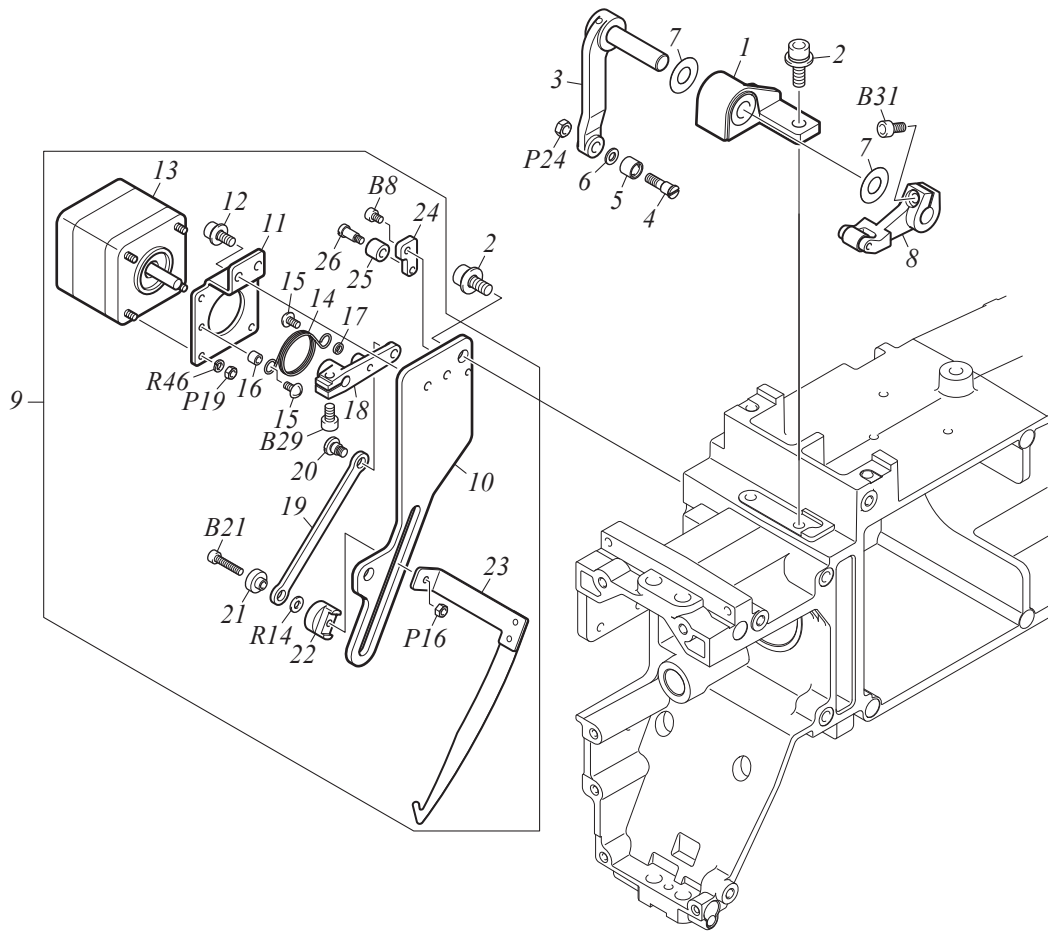
ARM 2

F1-5-2

| No. | Part Name | Part No. | Remark |
|-----|--------------------------------|--------------|--------|
| 1 | BASE :NEEDLE BAR CASE[A] | 0N3370810A00 | |
| 2 | BIND HEAD SCREW :M4*8 | 0N33P0158000 | |
| 3 | TAKE-UP LEVER GUIDE | 0N3370790010 | |
| 4 | HEAD FRONT COVER :L[A] | 0N3370720A00 | |
| 5 | HEAD FRONT COVER :L | 0N3370720000 | |
| 6 | SOLENOID :OPEN FRAME | 0N33G0040000 | |
| 7 | PAN HEAD SCREW :M3*3 (+-) | 0N33P0103000 | |
| 8 | LEVER :SOLENOID | 0N3370760000 | |
| 9 | TORSION SPRING :0.5MM DIA. | 0N3370780000 | |
| 10 | COLLAR :NO.1 :3.1MM DIA. | 0N3370770000 | |
| 11 | LEVER :DRIVE[S] | 0N3370730S00 | |
| 12 | GUIDE PLATE :NEEDLE BAR CASE | 0N3380390000 | |
| 13 | GUIDE BRACKET :NEEDLE BAR CASE | 0N3370800000 | |
| 14 | JUMP[A] | 0N3370670A00 | |
| 15 | PULSE MOTOR :42MM SQUARE[T] | 0N33G0010T00 | |
| 16 | BRACKET :JUMP MOTOR | 0N3370670000 | |
| 17 | CAP SCREW WITH WASHER :M4*12 | 0N33P023C000 | |
| 18 | COLLAR :NO.1 :5.1MM DIA. | 0N3370680000 | |
| 19 | TORSION SPRING :0.9MM DIA. | 0N3370710000 | |
| 20 | PAN HEAD SCREW :M3*4 (+-) | 0N33P0104000 | |
| 21 | CONNECTING STUD :JUMP LEVER | 0N3370690000 | |
| 22 | LEVER :JUMP | 0N3370700000 | |
| 23 | DAMPER RING :4MM DIA. | 0N33D0220000 | |
| 24 | STEPPED SCREW :NO.1 :M3*10 | 0N33D0230000 | |
| 25 | | | |
| 26 | | | |
| 27 | | | |
| 28 | | | |
| 29 | | | |
| 30 | | | |
| 31 | | | |
| 32 | | | |
| 33 | | | |
| 34 | | | |
| 35 | | | |
| 36 | | | |
| 37 | | | |
| 38 | | | |
| 39 | | | |
| 40 | | | |
| 41 | | | |
| 42 | | | |
| 43 | | | |
| 44 | | | |
| 45 | | | |
| 46 | | | |
| 47 | | | |
| 48 | | | |
| 49 | | | |
| 50 | | | |

Note: As for parts with mark @, please follow our instructions on Table of Contents in your parts order.

(WM05)



ARM 3

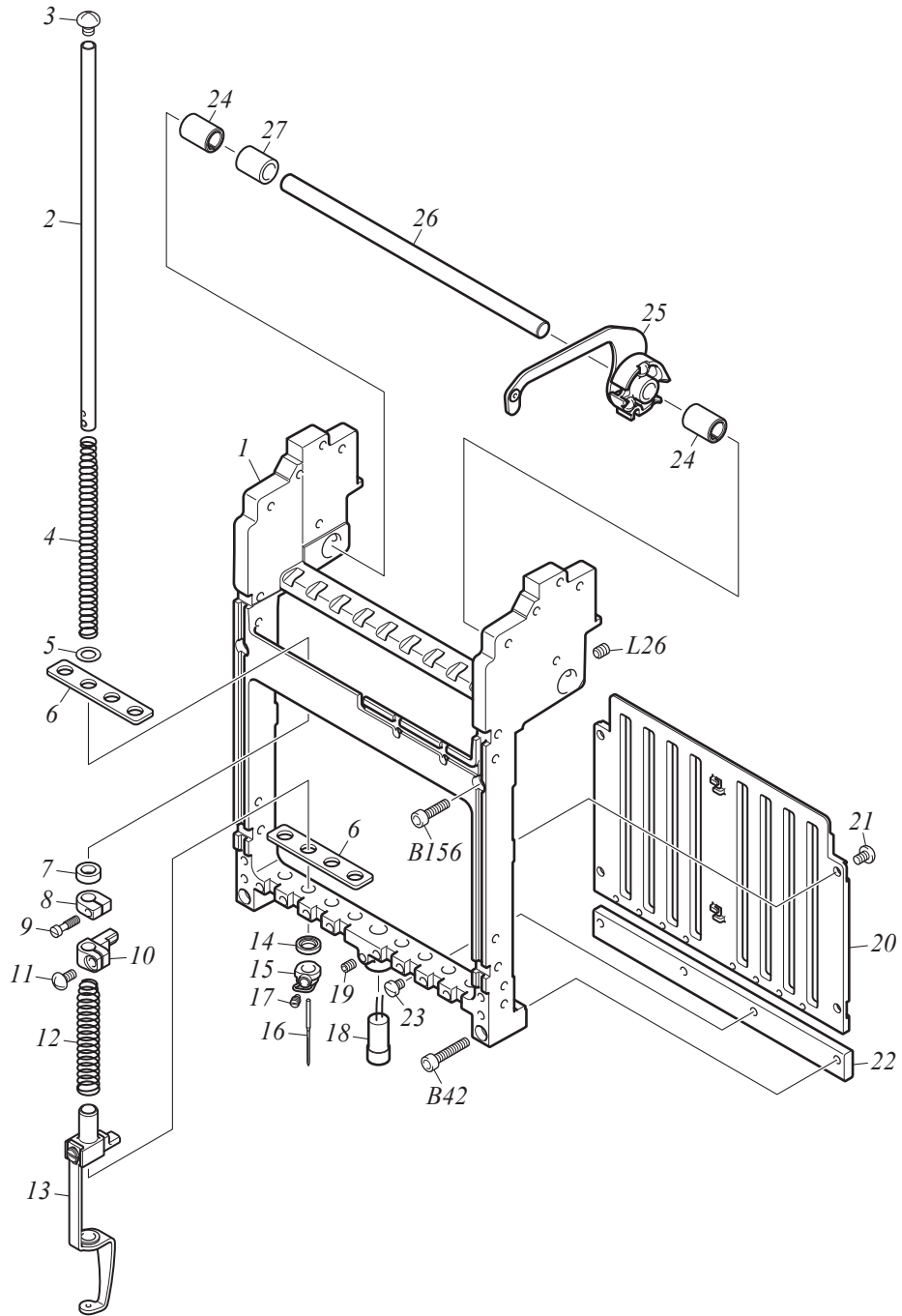
F1-5-3

| No. | Part Name | Part No. | Remark |
|-----|--|--------------|--------|
| 1 | BEARING CASE :TAKE-UP LEVER DRIVE LEVER[S] | 0N3370530S00 | |
| 2 | CAP SCREW WITH WASHER :M5*16 | 0N33P025G000 | |
| 3 | LEVER :TAKE-UP LEVER[S] | 0N3370550S00 | |
| 4 | STEPPED SCREW :NO.1 :M4*10 | 0N3370630000 | |
| 5 | ROLLER :5*7.94*5 | 0N3370840000 | |
| 6 | PLAIN WASHER :4*7.5*T0.8 | 0N3370520000 | |
| 7 | PLAIN WASHER :8*17*T0.2 | 0N3370660000 | |
| 8 | ARM :TAKE-UP LEVER[A] | 0N3370540A00 | |
| 9 | UPPER THREAD HOLDER[A] | 0N33A0010A00 | |
| 10 | BASE :HOOK | 0N33A0010000 | |
| 11 | BASE :HOOK MOTOR | 0N33A0020000 | |
| 12 | CAP SCREW WITH WASHER :M4*8 (W8P*T0.8) | 0N33P0240010 | |
| 13 | PULSE MOTOR :42MM SQUARE[T] | 0N33G0010T00 | |
| 14 | TORSION SPRING :0.9MM DIA. | 0N33A0120000 | |
| 15 | TRUSS HEAD SCREW :M3*6 | 0N33P0026000 | |
| 16 | COLLAR :NO.1 :3MM DIA. | 0N33A0140000 | |
| 17 | PLAIN WASHER :3*5*T1 | 0N33A0130000 | |
| 18 | LEVER :UPPER THREAD HOOK | 0N33A0030000 | |
| 19 | CONNECTING PLATE :HOOK | 0N33A0040000 | |
| 20 | STEPPED SCREW :NO.1 :M4*6.9 | 0N33D0050000 | |
| 21 | SPACER :SLIDE HOOK | 0N33A0110000 | |
| 22 | GUIDE COLLAR :UPPER THREAD HOOK | 0N33A0100000 | |
| 23 | HOOK[S] | 0N33A0070S00 | |
| 24 | STOPPER BASE :HOOK | 0N33A0060000 | |
| 25 | DAMPER RING :4MM DIA. | 0N33D0220000 | |
| 26 | STEPPED SCREW :NO.1 :M3*10 | 0N33D0230000 | |
| 27 | | | |
| 28 | | | |
| 29 | | | |
| 30 | | | |
| 31 | | | |
| 32 | | | |
| 33 | | | |
| 34 | | | |
| 35 | | | |
| 36 | | | |
| 37 | | | |
| 38 | | | |
| 39 | | | |
| 40 | | | |
| 41 | | | |
| 42 | | | |
| 43 | | | |
| 44 | | | |
| 45 | | | |
| 46 | | | |
| 47 | | | |
| 48 | | | |
| 49 | | | |
| 50 | | | |

Note: As for parts with mark @, please follow our instructions on Table of Contents in your parts order.

(WM05)

NEEDLE BAR CASE 1



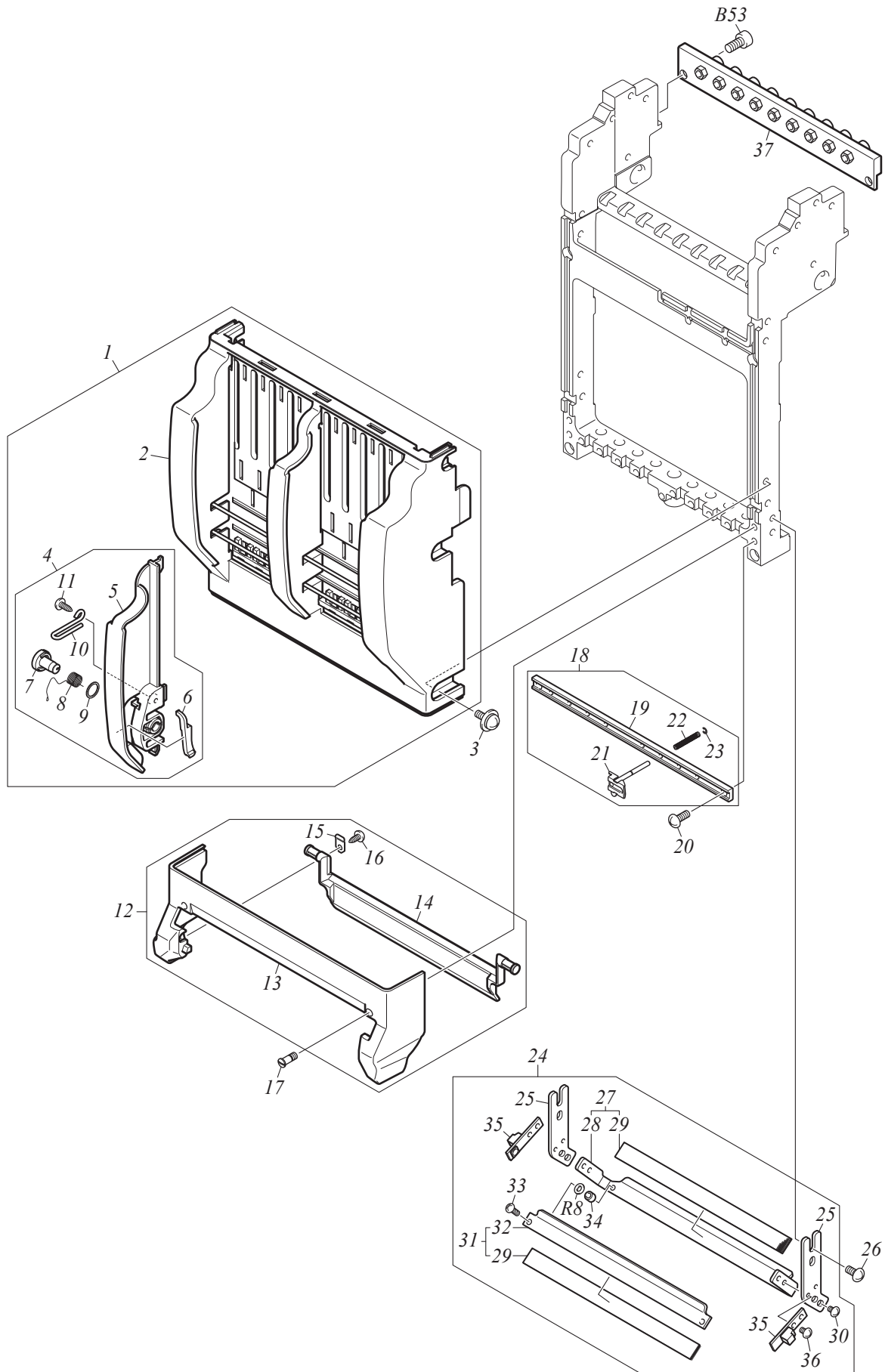
NEEDLE BAR CASE 1

F1-6-1

| No. | Part Name | Part No. | Remark |
|-----|--|--------------|--------|
| 1 | NEEDLE BAR CASE :08-NEEDLE | 0N3380010000 | |
| 2 | NEEDLE BAR | 0N3380100000 | |
| 3 | PAN HEAD SCREW :M5*6 (+-/d8) | 0N33P0126000 | |
| 4 | COMPRESSION SPRING :0.5MM DIA. | 0N3380230000 | |
| 5 | PLAIN WASHER :6.5*11*T0.4 | 0N33P0300000 | |
| 6 | FELT PACKING | 0N3380090000 | |
| 7 | DAMPER RING :F | 0N3380110000 | |
| 8 | STOPPER :UPPER DEAD POINT | 0N3380120000 | |
| 9 | FLAT FILLISTER HEAD SCREW :M3*12 (5*2.3) | 0N33P0060000 | |
| 10 | NEEDLE BAR CONNECTING STUD | 0N3380250000 | |
| 11 | PAN HEAD SCREW :M4*8 (+-) | 0N33P0118000 | |
| 12 | COMPRESSION SPRING :0.9MM DIA. | 0N3380220000 | |
| 13 | PRESSER FOOT CONNECTING STUD[A] | 0N3380130A00 | |
| 14 | DAMPER RING :A | 0N3380170000 | |
| 15 | NEEDLE CLAMP[S] | 0N3380180S00 | |
| 16 | NEEDLE :DB-K5Z1 #11 | 0N33Y0271000 | |
| 16 | NEEDLE :DB-K5Z1 #12 | 0N33Y0270000 | |
| 17 | SLOTTED HEAD SET SCREW :M4 | 0N3380210000 | |
| 18 | LINE MARKER | 0N33G0480010 | |
| 19 | HEXAGON SOCKET HEAD SET SCREW :FLAT TIP TYPE :M4*6 | S176040601TN | |
| 20 | NEEDLE BAR GUIDE :09-NEEDLE | 0N3380320000 | |
| 21 | PAN HEAD SCREW :M4*8 (+-) | 0N33P0118000 | |
| 22 | RAIL :CASE :LOWER :09-NEEDLE | 0N3380260000 | |
| 23 | FLAT FILLISTER HEAD SCREW :M4 | 0N3380240000 | |
| 24 | SPLIT COLLAR :NO.2 :8MM DIA. | 0N3380070000 | |
| 25 | TAKE-UP LEVER[A] | 0N3380020A10 | |
| 26 | GUIDE SHAFT :TAKE UP LEVER :09-NEEDLE | 0N3380080000 | |
| 27 | COLLAR :8MM DIA. | 0N3380060000 | |
| 28 | | | |
| 29 | | | |
| 30 | | | |
| 31 | | | |
| 32 | | | |
| 33 | | | |
| 34 | | | |
| 35 | | | |
| 36 | | | |
| 37 | | | |
| 38 | | | |
| 39 | | | |
| 40 | | | |
| 41 | | | |
| 42 | | | |
| 43 | | | |
| 44 | | | |
| 45 | | | |
| 46 | | | |
| 47 | | | |
| 48 | | | |
| 49 | | | |

Note: As for parts with mark @, please follow our instructions on Table of Contents in your parts order.

(XL10)



NEEDLE BAR CASE 2

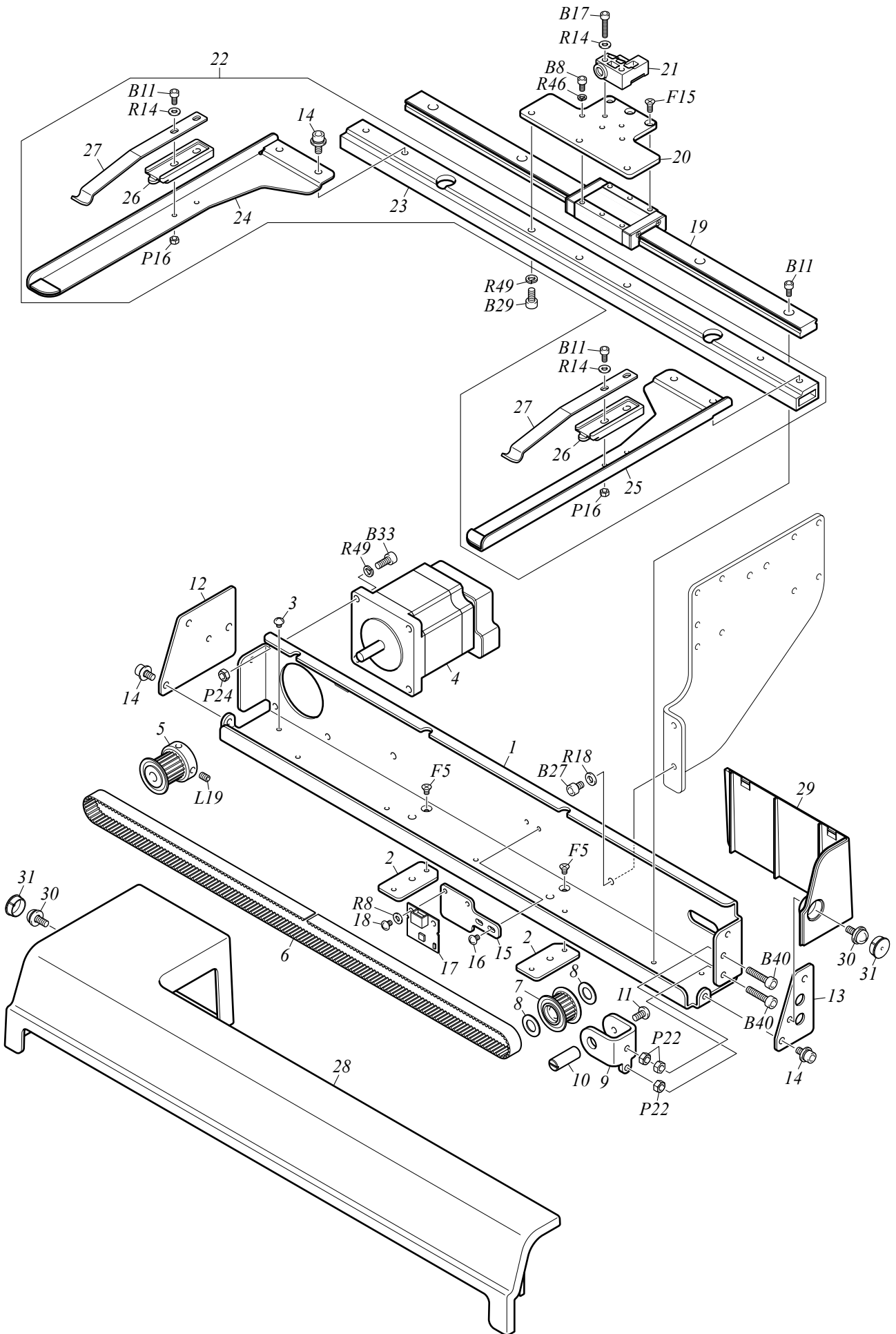
F1-6-2

| No. | Part Name | Part No. | Remark |
|-----|---|--------------|--------|
| 1 | TOP COVER[A] | 0N3390120A00 | |
| 2 | TOP COVER :1[A] | 0N3390121A00 | |
| 3 | PAN HEAD SCREW WITH WASHER :M4*12 | 0N33P026C000 | |
| 4 | MIDDLE THREAD GUIDE[A] | 0N3380400A00 | |
| 5 | MIDDLE THREAD GUIDE :SNAP FIT | 0N3380400000 | |
| 6 | SIDE WALL PLATE :MIDDLE THREAD GUIDE | 0N3380450000 | |
| 7 | SPRING SHAFT :THREAD TAKE-UP SPRING | 0N3380420000 | |
| 8 | THREAD TAKE-UP SPRING :NO.2 :0.4MM DIA. | 0N3380440000 | |
| 9 | PLAIN WASHER :8*10*T0.5 | 0N3380460000 | |
| 10 | LARGE THREAD HOLDER :A | 0N3380430000 | |
| 11 | TRUSS HEAD TAPPING SCREW :3P*10 | 0N33P016A000 | |
| 12 | NEEDLE BASE COVER[A] | 0N3380550A00 | |
| 13 | FACE COVER | 0N3390110010 | |
| 14 | NEEDLE BASE COVER | 0N3380550000 | |
| 15 | PLATE SPRING :NEEDLE BASE COVER | 0N3380560000 | |
| 16 | PAN HEAD TAPPING SCREW :3P*8 | 0N33P0198000 | |
| 17 | STEPPED SCREW :NO.1 :M4*10.3 | 0N3380470000 | |
| 18 | UPPER THREAD LOCK[A] | 0N3380510A00 | |
| 19 | BASE :UPPER THREAD LOCK :09-NEEDLE | 0N3380270000 | |
| 20 | BIND HEAD SCREW :M4*8 | 0N33P0158000 | |
| 21 | LOCK SHAFT[S] | 0N3380280S00 | |
| 22 | COMPRESSION SPRING :0.3MM DIA. | 0N3380310000 | |
| 23 | E-RING :1.5MM DIA. | 0N33Y0191000 | |
| 24 | UPPER THREAD HOLDER[A] | 0N3380520A00 | |
| 25 | BRACKET :UPPER THREAD HOLDER | 0N3380330000 | |
| 26 | BIND HEAD SCREW :M4*8 | 0N33P0158000 | |
| 27 | BASE :UPPER THREAD HOLDER :09-NEEDLE[S] | 0N3380340S00 | |
| 28 | BASE :UPPER THREAD HOLDER :09-NEEDLE | 0N3380340000 | |
| 29 | FASTENING TAPES :WDS4 | 0N3380360000 | |
| 30 | BIND HEAD SCREW :M3*4 | 0N33P0144000 | |
| 31 | UPPER THREAD HOLDER :09-NEEDLE[S] | 0N3380350S00 | |
| 32 | UPPER THREAD HOLDER :09-NEEDLE | 0N3380350000 | |
| 33 | PAN HEAD SCREW :M3*8 (+-) | 0N33P0108000 | |
| 34 | COLLAR :NO.1 :3MM DIA. | 0N33A0140000 | |
| 35 | CARD :LED NEEDLE BASE LIGHT | 0N33G0470000 | |
| 36 | PAN HEAD SCREW :M2.5*3 | 0N33P0083000 | |
| 37 | CHANGE ROLLER[A] | 0N3380530A00 | |
| 38 | | | |
| 39 | | | |
| 40 | | | |
| 41 | | | |
| 42 | | | |
| 43 | | | |
| 44 | | | |
| 45 | | | |
| 46 | | | |
| 47 | | | |
| 48 | | | |
| 49 | | | |
| 50 | | | |

Note: As for parts with mark @, please follow our instructions on Table of Contents in your parts order.

(WM05)

X-AXIS DRIVE SYSTEM



X-AXIS DRIVE SYSTEM

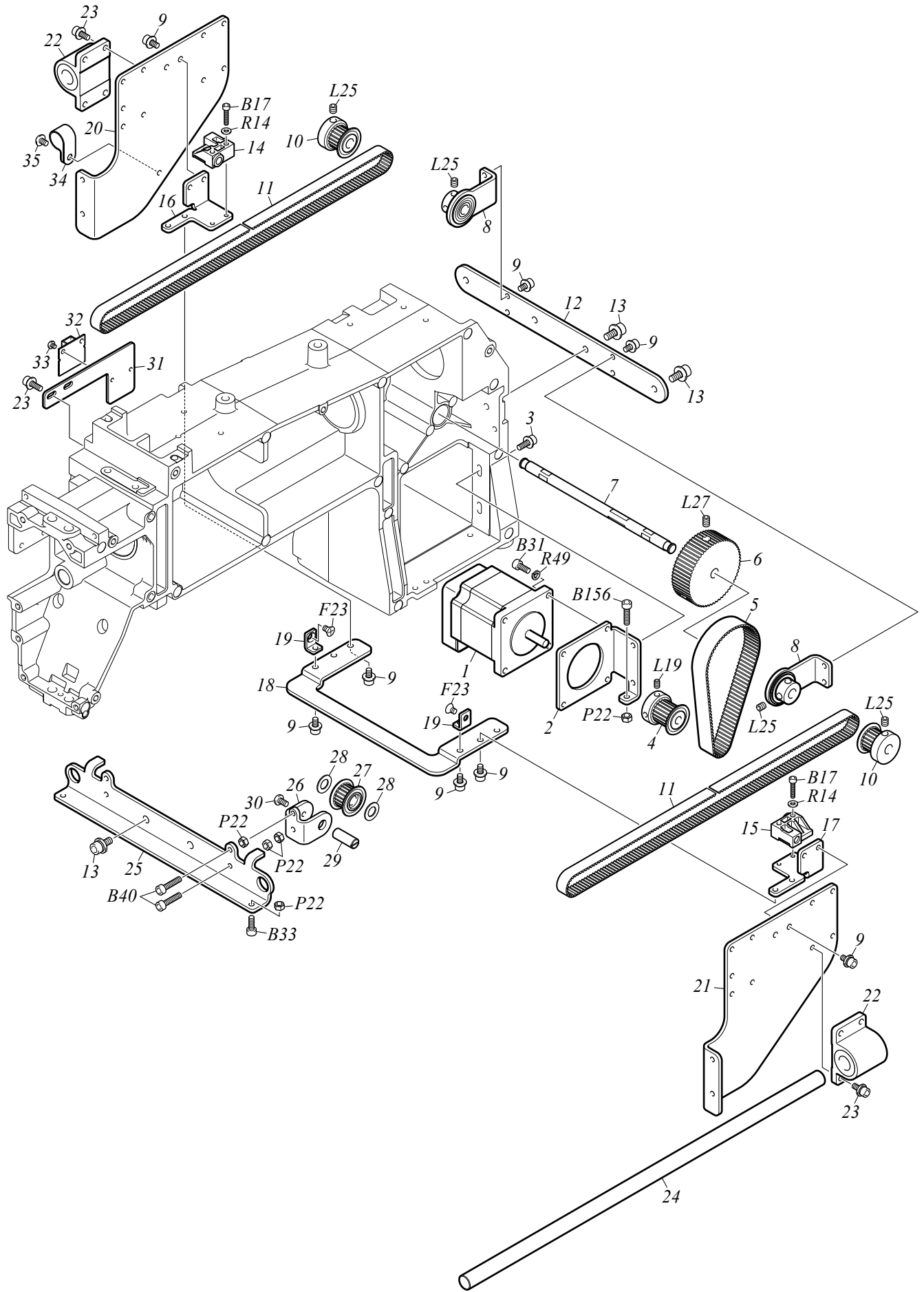
F1-7

| No. | Part Name | Part No. | Remark |
|-----|--|--------------|--------|
| 1 | Z-SPEC. FRAME SASH | 0N33E0010010 | |
| 2 | BASE :CAP FRAME | 0N33E0410000 | |
| 3 | PAN HEAD SCREW :M3*3 (+-) | 0N33P0103000 | |
| 4 | PULSE MOTOR :56MM SQUARE 54L :WITH SENSOR[A] | 0N33G0070A00 | |
| 5 | TIMING PULLEY :W15-20[S] | 0N33E0030S00 | |
| 6 | TIMING BELT :100 S3M 786 GB | 0N33Y0070000 | |
| 7 | TIMING PULLEY :W10-20[S] | 0N33E0090S00 | |
| 8 | RULON WASHER :TW-0815 | 0N33E0370000 | |
| 9 | BRACKET :PULLEY | 0N33E0070000 | |
| 10 | PIN :PULLEY | 0N33E0080000 | |
| 11 | BIND HEAD SCREW :M4*8 | 0N33P0158000 | |
| 12 | Z-SPEC. FRAME SASH :L | 0N33E0020000 | |
| 13 | Z-SPEC. FRAME SASH :R | 0N33E0390000 | |
| 14 | CAP SCREW WITH WASHER :M4*8 (W8P*T0.8) | 0N33P0240010 | |
| 15 | BASE :CARD :X DRIVE | 0N33E0320000 | |
| 16 | BIND HEAD SCREW :M3*4 | 0N33P0144000 | |
| 17 | CARD :MAGNETIC SENSOR A | 0N33G0460000 | |
| 18 | PAN HEAD SCREW :M3*3 (+-) | 0N33P0103000 | |
| 19 | LINEAR WAY :X DRIVE SYSTEM | 0N33Y0060000 | |
| 20 | FRAME HOLDER | 0N33E0110000 | |
| 21 | BELT CATCHER :B[S] | 0N33E012BS00 | |
| 22 | FRAME HOLDER [A] | 0N33E0340A00 | |
| 23 | SASH :FRAME HOLDER | 0N33E0340000 | |
| 24 | FRAME HOLDER :L[S] | 0N33E0130S00 | |
| 25 | FRAME HOLDER :R[S] | 0N33E0160S00 | |
| 26 | STOPPER :NO.2 | 0N33E0350000 | |
| 27 | PLATE SPRING :HOLDER BASE :T1.5 | 0N33E0360000 | |
| 28 | COVER :Z-SPEC. FRAME SASH :L | 0N33E0380010 | |
| 29 | COVER :Z-SPEC. FRAME SASH :R | 0N33E0400000 | |
| 30 | PAN HEAD SCREW WITH WASHER :M4*12 | 0N33P026C000 | |
| 31 | CAP :COVER :COOL GRAY 6C | 0N3390131000 | |
| 32 | | | |
| 33 | | | |
| 34 | | | |
| 35 | | | |
| 36 | | | |
| 37 | | | |
| 38 | | | |
| 39 | | | |
| 40 | | | |
| 41 | | | |
| 42 | | | |
| 43 | | | |
| 44 | | | |
| 45 | | | |
| 46 | | | |
| 47 | | | |
| 48 | | | |
| 49 | | | |
| 50 | | | |

Note: As for parts with mark @, please follow our instructions on Table of Contents in your parts order.

(WM05)

Y-AXIS DRIVE SYSTEM



Y-AXIS DRIVE SYSTEM

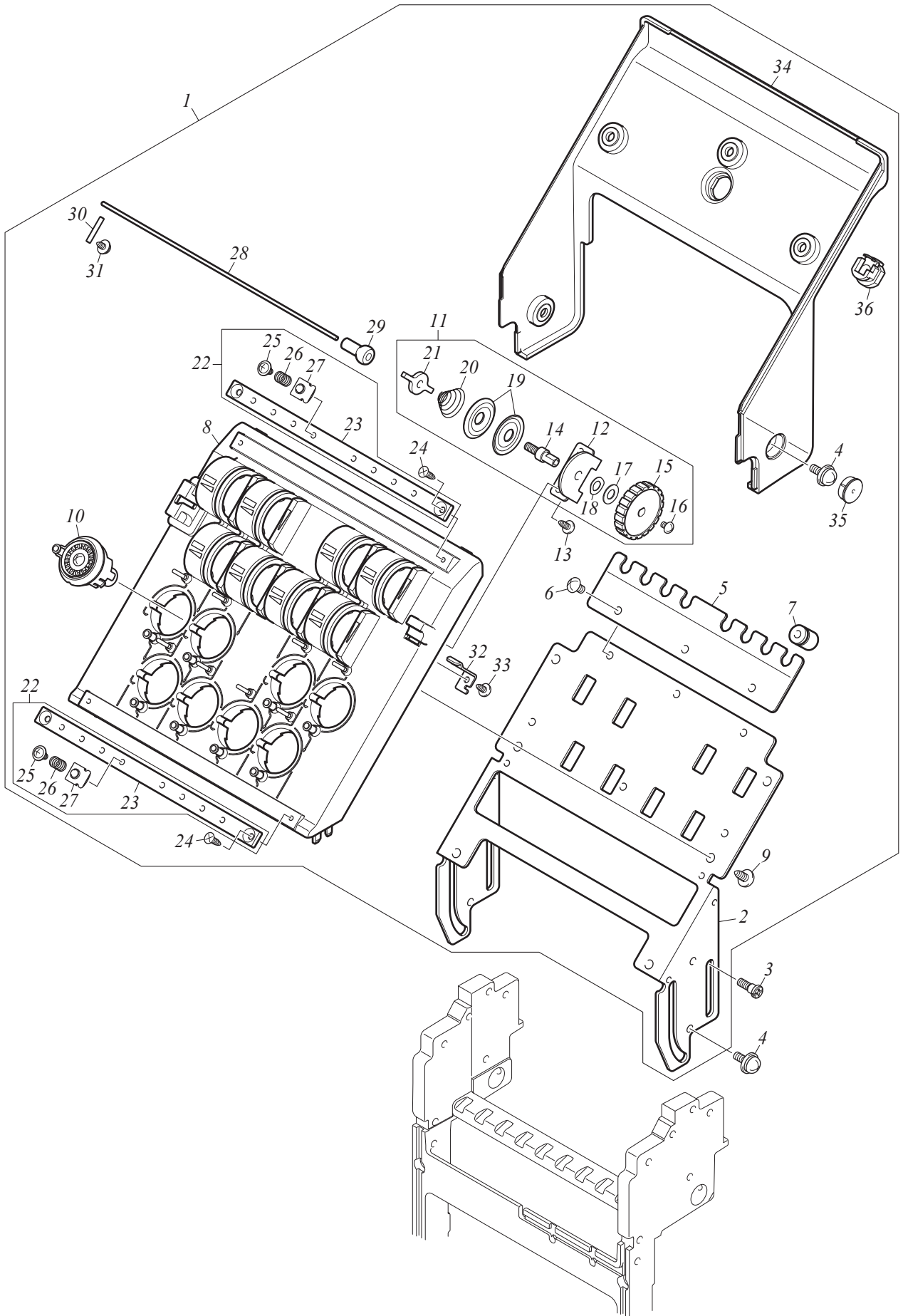
F1-8

| No. | Part Name | Part No. | Remark |
|-----|--|--------------|--------|
| 1 | PULSE MOTOR :56MM SQUARE 54L :WITH SENSOR[A] | 0N33G0070A00 | |
| 2 | BRACKET :Y DRIVE MOTOR | 0N33E0280000 | |
| 3 | CAP SCREW WITH WASHER :M4*12 | 0N33P023C000 | |
| 4 | TIMING PULLEY :W15-20[S] | 0N33E0030S00 | |
| 5 | TIMING BELT :150 S3M 264 GB | 0N33Y0110000 | |
| 6 | PULLEY :Y DRIVE SYSTEM | 0N33E0270000 | |
| 7 | Y-AXIS DRIVE SHAFT | 0N33E0300000 | |
| 8 | BEARING CASE :Y-AXIS DRIVE SHAFT[S] | 0N33E0240S00 | |
| 9 | CAP SCREW WITH WASHER :M4*8 (W8P*T0.8) | 0N33P0240010 | |
| 10 | DRIVE PULLEY :S3M W10-20[S] | 0N33E0250S00 | |
| 11 | TIMING BELT :100 S3M 648 GB | 0N33Y0100000 | |
| 12 | BRACKET :Y DRIVE SYSTEM | 0N33E0230000 | |
| 13 | CAP SCREW WITH WASHER :M5*12 | 0N33P025C000 | |
| 14 | BELT CATCHER :A[S] | 0N33E012AS00 | |
| 15 | BELT CATCHER | 0N33E0120000 | |
| 16 | BRACKET :BELT CATCHER :L | 0N33E021L000 | |
| 17 | BRACKET :BELT CATCHER :R | 0N33E021R000 | |
| 18 | BRACKET :Z-SPEC. FRAME ARM | 0N33E0190000 | |
| 19 | REINFORCING PLATE :Y DRIVE SYSTEM | 0N33E0430000 | |
| 20 | Z-SPEC. FRAME ARM :L | 0N33E018L000 | |
| 21 | Z-SPEC. FRAME ARM :R | 0N33E018R000 | |
| 22 | SLIDE BLOCK[S] | 0N33E0200S00 | |
| 23 | CAP SCREW WITH WASHER :M4*10 | 0N33P023A000 | |
| 24 | SHAFT :Y DRIVE SYSTEM | 0N33E0290000 | |
| 25 | BRACKET :Y DRIVE SYSTEM :FRONT | 0N33E0220000 | |
| 26 | BRACKET :PULLEY | 0N33E0070000 | |
| 27 | TIMING PULLEY :W10-20[S] | 0N33E0090S00 | |
| 28 | RULON WASHER :TW-0815 | 0N33E0370000 | |
| 29 | PIN :PULLEY | 0N33E0080000 | |
| 30 | BIND HEAD SCREW :M4*8 | 0N33P0158000 | |
| 31 | BASE :CARD :Y DRIVE | 0N33E0330000 | |
| 32 | CARD :MAGNETIC SENSOR A | 0N33G0460000 | |
| 33 | PAN HEAD SCREW :M3*3 (+-) | 0N33P0103000 | |
| 34 | CORD CLAMP :UC-3 | 0N33G0980000 | |
| 35 | TRUSS HEAD SCREW :M4*6 (+-) | 0N33P0046000 | |
| 36 | | | |
| 37 | | | |
| 38 | | | |
| 39 | | | |
| 40 | | | |
| 41 | | | |
| 42 | | | |
| 43 | | | |
| 44 | | | |
| 45 | | | |
| 46 | | | |
| 47 | | | |
| 48 | | | |
| 49 | | | |
| 50 | | | |

Note: As for parts with mark @, please follow our instructions on Table of Contents in your parts order.

(WM05)

TENSION BASE



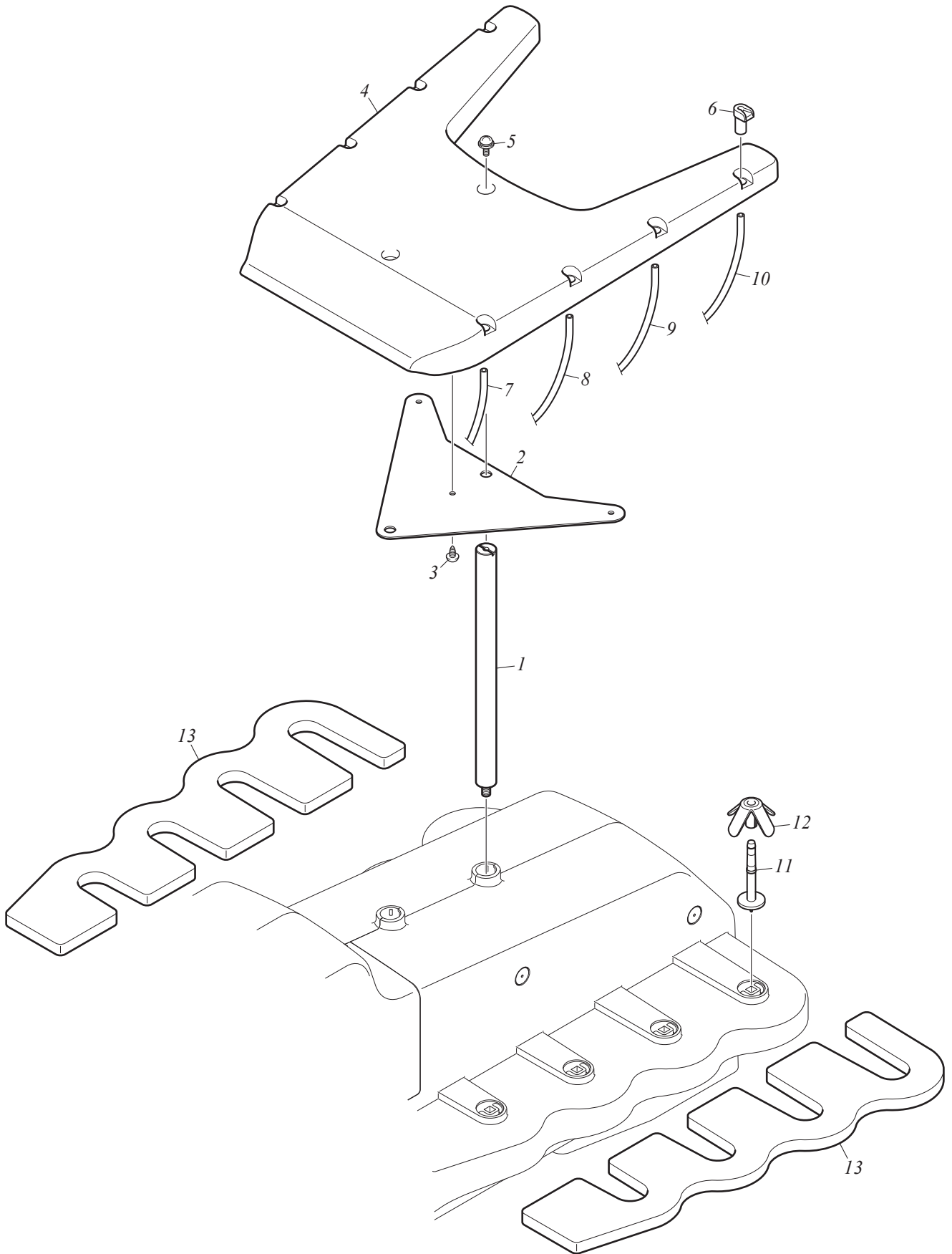
TENSION BASE

F1-9

| No. | Part Name | Part No. | Remark |
|-----|--|--------------|--------|
| 1 | TENSION BASE[A] | 0N33B0260A10 | |
| 2 | TENSION BASE ATTACHING BASE | 0N33B0100000 | |
| 3 | STEPPED SCREW :NO.1 :M4*12 | 0N3380380000 | |
| 4 | PAN HEAD SCREW WITH WASHER :M4*12 | 0N33P026C000 | |
| 5 | BASE :RUBBER TUBE | 0N33B0030000 | |
| 6 | PAN HEAD SCREW :M4*5 (+-) | 0N33P0115000 | |
| 7 | BUSHING :RUBBER TUBE :B | 0N33C0090010 | |
| 8 | TENSION BASE SUPPORT[S] | 0N33B0200S00 | |
| 9 | TRUSS HEAD TAPPING SCREW :4P*8 TYPE 2 | 0N33P0178000 | |
| 10 | ROTARY TENSION DISK[A] | 0N33B0090A00 | |
| 11 | TENSION[A] | 0N33B0040A00 | |
| 12 | TENSION BASE | 0N33B0040000 | |
| 13 | PAN HEAD TAPPING SCREW :3P*10 | 0N33P019A000 | |
| 14 | TENSION STUD | 0N33B0050000 | |
| 15 | TENSION KNOB | 0N33B0060000 | |
| 16 | BIND HEAD SCREW :M3*4 | 0N33P0144000 | |
| 17 | PLAIN WASHER :5.5*11*T0.5 | 0N33P0290000 | |
| 18 | WAVE WASHER :M5*9.6*T0.15 | 0N33P0310000 | |
| 19 | TENSION DISK | 0N33B0070000 | |
| 20 | TAPER SPRING :0.6MM DIA. | 0N33B0210000 | |
| 21 | TENSION ADJUSTING NUT | 0N33B0080000 | |
| 22 | THREAD PRESSER :09-NEEDLE[A] | 0N33B0140A00 | |
| 23 | BASE :THREAD PRESSER :09-NEEDLE | 0N33B0140000 | |
| 24 | COUNTERSUNK TAPPING SCREW :3P*8 | S550030801SD | |
| 25 | TRUSS HEAD SCREW :STEPPED :M3*4*2 | 0N33P001Z000 | |
| 26 | COMPRESSION SPRING :0.2MM DIA. | 0N33B0160000 | |
| 27 | THREAD PRESSER | 0N33B0150000 | |
| 28 | THREAD PRESSER :2MM DIA. | 0N33B0220000 | |
| 29 | CAP :THREAD PRESSER | 0N33B0230000 | |
| 30 | STRAIGHT PIN :NO.1 :3MM DIA. | 0N3350220000 | |
| 31 | PAN HEAD TAPPING FLANGE SCREW :3P*5 TYPE 2 | 0N33P0225000 | |
| 32 | PLATE SPRING :T1.2 | 0N33B0240000 | |
| 33 | TRUSS HEAD TAPPING SCREW :3P*6 | S530030601SD | |
| 34 | COVER :TENSION BASE | 0N33B0250000 | |
| 35 | CAP :COVER :COOL GRAY 6C | 0N3390131000 | |
| 36 | BUSHING :HARNES :SR-5R2 | 0N33G0930000 | |
| 37 | | | |
| 38 | | | |
| 39 | | | |
| 40 | | | |
| 41 | | | |
| 42 | | | |
| 43 | | | |
| 44 | | | |
| 45 | | | |
| 46 | | | |
| 47 | | | |
| 48 | | | |
| 49 | | | |
| 50 | | | |

Note: As for parts with mark @, please follow our instructions on Table of Contents in your parts order.

(WM05)



THREAD STAND

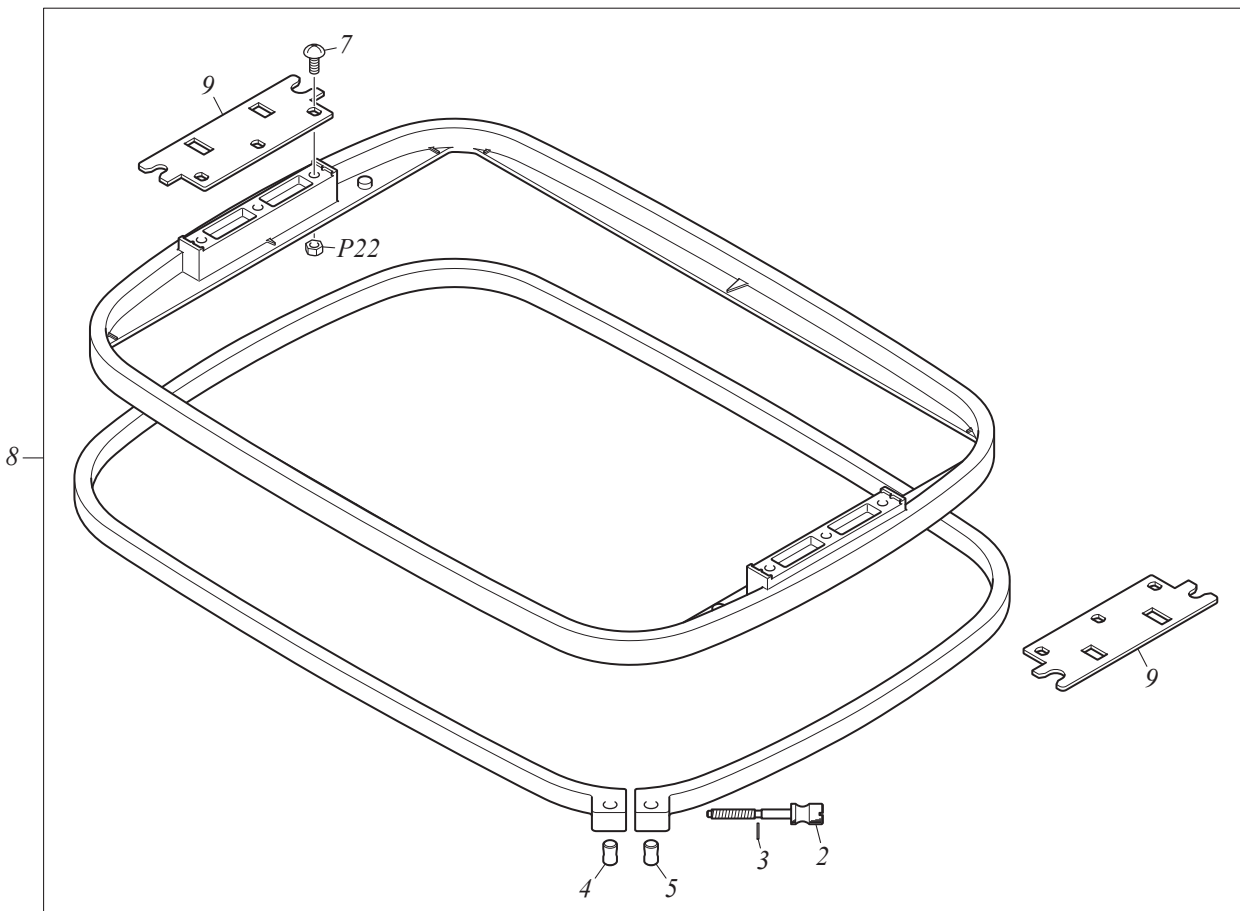
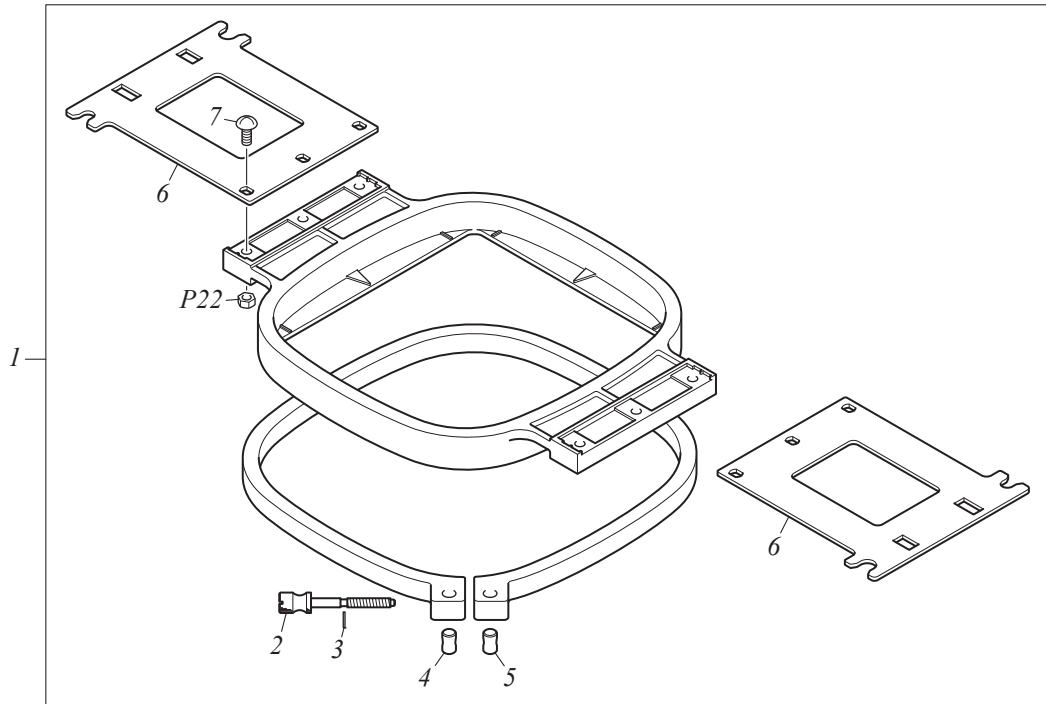
F1-10

| No. | Part Name | Part No. | Remark |
|-----|---------------------------------------|--------------|--------|
| 1 | THREAD COURSE SUPPORT BAR | 0N33C0050000 | |
| 2 | THREAD COURSE :REINFORCING PLATE | 0N33C0060000 | |
| 3 | TRUSS HEAD TAPPING SCREW :4P*8 TYPE 2 | 0N33P0178000 | |
| 4 | THREAD COURSE | 0N33C0070000 | |
| 5 | PAN HEAD SCREW WITH WASHER :M4*12 | 0N33P026C000 | |
| 6 | BUSHING :RUBBER TUBE :A | 0N33C0080000 | |
| 7 | RUBBER TUBE :L200 | 0N33C0010000 | |
| 8 | RUBBER TUBE :L280 | 0N33C0020000 | |
| 9 | RUBBER TUBE :L380 | 0N33C0030000 | |
| 10 | RUBBER TUBE :L480 | 0N33C0040000 | |
| 11 | THREAD STAND STUD | 0N33C0110000 | |
| 12 | THREAD STAND BLADE | 0N33C0120000 | |
| 13 | BASE :THREAD | 0N33C0100000 | |
| 14 | | | |
| 15 | | | |
| 16 | | | |
| 17 | | | |
| 18 | | | |
| 19 | | | |
| 20 | | | |
| 21 | | | |
| 22 | | | |
| 23 | | | |
| 24 | | | |
| 25 | | | |
| 26 | | | |
| 27 | | | |
| 28 | | | |
| 29 | | | |
| 30 | | | |
| 31 | | | |
| 32 | | | |
| 33 | | | |
| 34 | | | |
| 35 | | | |
| 36 | | | |
| 37 | | | |
| 38 | | | |
| 39 | | | |
| 40 | | | |
| 41 | | | |
| 42 | | | |
| 43 | | | |
| 44 | | | |
| 45 | | | |
| 46 | | | |
| 47 | | | |
| 48 | | | |
| 49 | | | |
| 50 | | | |

Note: As for parts with mark @, please follow our instructions on Table of Contents in your parts order.

(WM05)

TUBULAR GOODS FRAME



TUBULAR GOODS FRAME

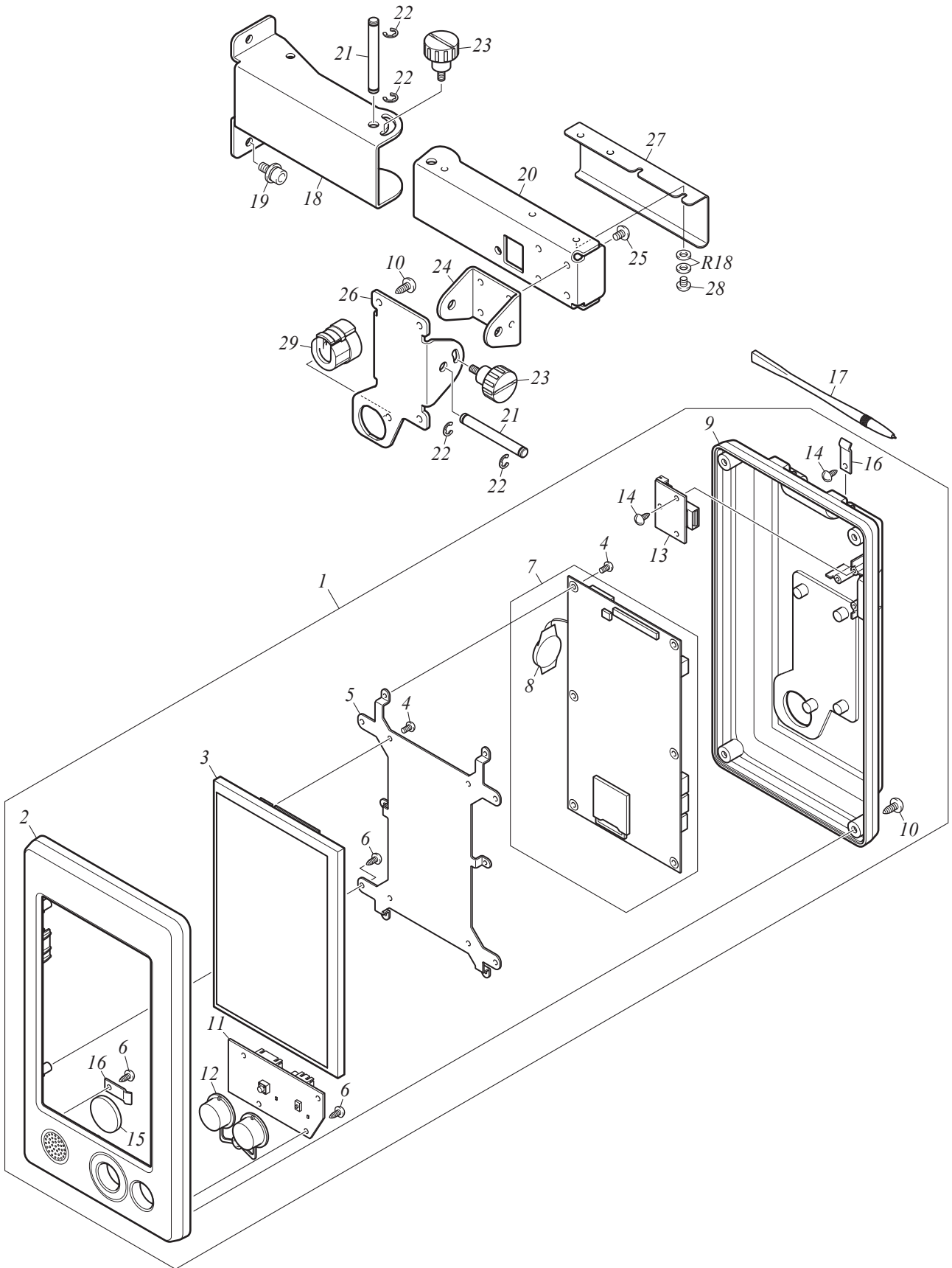
F1-11

| No. | Part Name | Part No. | Remark |
|-----|---|--------------|--------|
| 1 | TUBULAR GOODS FRAME :100*100[A] | 0N33F0010A00 | |
| 2 | KNURLED SCREW :M4*37 | 0N33F0060000 | |
| 3 | E-RING :3MM DIA. | 0N33Y0193000 | |
| 4 | FRAME ADJUSTING FITTING | 0N33F0040000 | |
| 5 | FRAME ADJUSTING NUT | 0N33F0050000 | |
| 6 | FRAME ARM :TUBULAR GOODS FRAME :100*100 | 0N33F0070000 | |
| 7 | TRUSS HEAD SCREW :M4*10 (+-) | 0N33P004A000 | |
| 8 | TUBULAR GOODS FRAME :200*300[A] | 0N33F0080A10 | |
| 9 | FRAME ARM :TUBULAR GOODS FRAME :200*300 | 0N33F0110000 | |
| 10 | | | |
| 11 | | | |
| 12 | | | |
| 13 | | | |
| 14 | | | |
| 15 | | | |
| 16 | | | |
| 17 | | | |
| 18 | | | |
| 19 | | | |
| 20 | | | |
| 21 | | | |
| 22 | | | |
| 23 | | | |
| 24 | | | |
| 25 | | | |
| 26 | | | |
| 27 | | | |
| 28 | | | |
| 29 | | | |
| 30 | | | |
| 31 | | | |
| 32 | | | |
| 33 | | | |
| 34 | | | |
| 35 | | | |
| 36 | | | |
| 37 | | | |
| 38 | | | |
| 39 | | | |
| 40 | | | |
| 41 | | | |
| 42 | | | |
| 43 | | | |
| 44 | | | |
| 45 | | | |
| 46 | | | |
| 47 | | | |
| 48 | | | |
| 49 | | | |
| 50 | | | |

Note: As for parts with mark @, please follow our instructions on Table of Contents in your parts order.

(WM05)

OPERATION PANEL



OPERATION PANEL

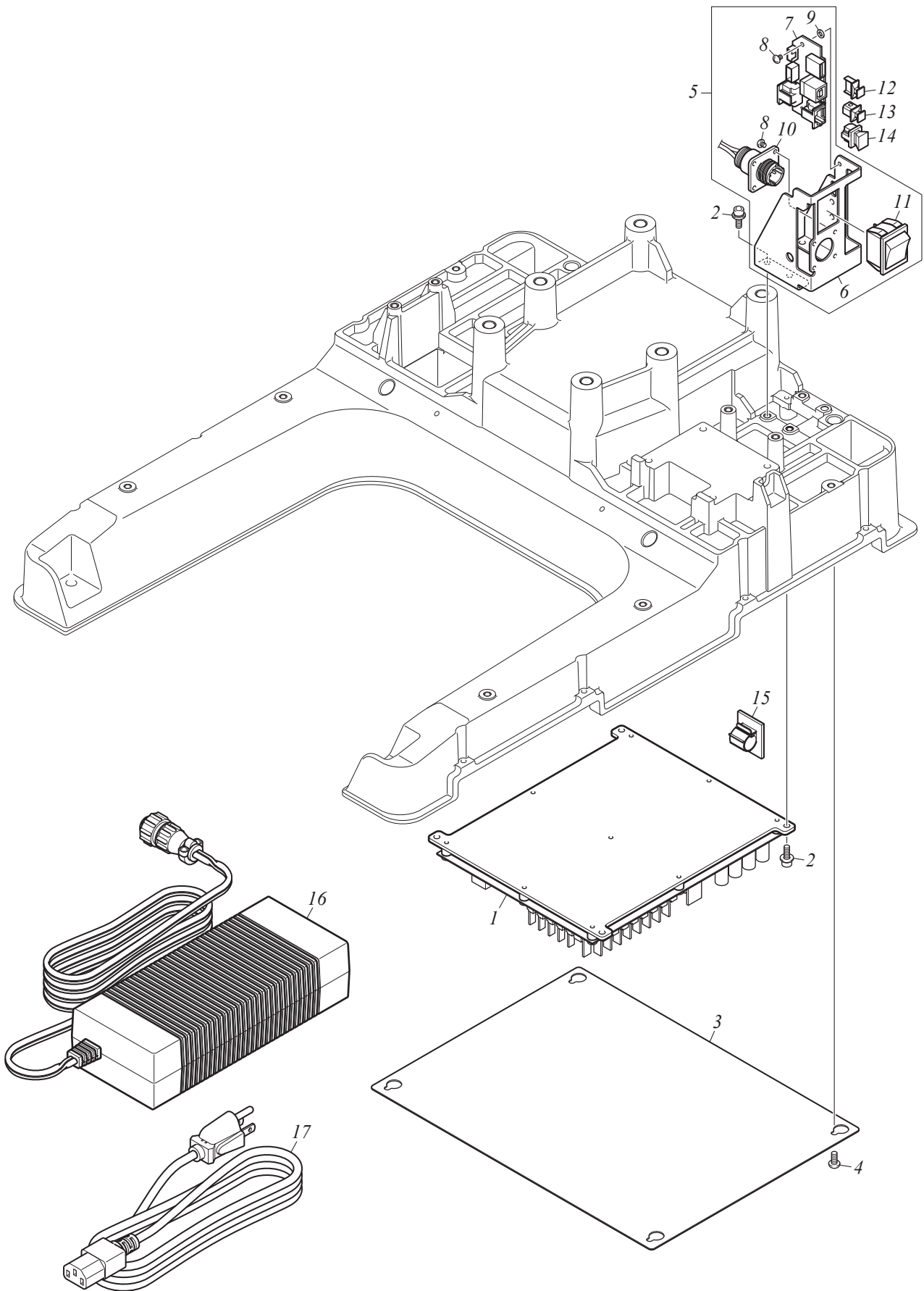
F1-12

| No. | Part Name | Part No. | Remark |
|-----|--------------------------------------|--------------|--------|
| 1 | OPERATION PANEL :MS1[A] | 0N33G0200A40 | |
| 2 | COVER :LCD PANEL :FRONT | 0N33G0960020 | |
| 3 | LCD :7 INCH WIDE | 0N33G0250010 | |
| 4 | PAN HEAD SCREW :M3*4 (+-) | 0N33P0104000 | |
| 5 | BASE :CPU CARD | 0N33J0060000 | |
| 6 | PAN HEAD TAPPING SCREW :3P*10 | 0N33P019A000 | |
| 7 | CARD :PANEL CPU[A] | 0N33G0210A20 | |
| 8 | LITHIUM BATTERY[A] | 0N33G0240A00 | |
| 9 | COVER :LCD PANEL :REAR | 0N33G0970000 | |
| 10 | PAN HEAD TAPPING SCREW :4P*10 TYPE 2 | 0N33P021A000 | |
| 11 | CARD :SWITCH | 0N33G0260010 | |
| 12 | OPERATION BUTTON | 0N33J0110000 | |
| 13 | CARD :USB CONNECTOR | 0N33G0270000 | |
| 14 | TRUSS HEAD TAPPING SCREW :3P*6 | S530030601SD | |
| 15 | SPEAKER | 0N33G0280000 | |
| 16 | PLATE SPRING :STYLUS | 0N33J0070000 | |
| 17 | STYLUS | 0N33J0100000 | |
| 18 | BRACKET :OPERATION PANEL :A | 0N33J0020000 | |
| 19 | CAP SCREW WITH WASHER :M5*12 | 0N33P025C000 | |
| 20 | BRACKET :OPERATION PANEL :B | 0N33J0030000 | |
| 21 | STRAIGHT PIN :6MM DIA. | 0N33J0010000 | |
| 22 | E-RING :5MM DIA. | 0N33Y0195000 | |
| 23 | KNOBBED SCREW[S] | 0N33J0080S00 | |
| 24 | BRACKET :OPERATION PANEL :C | 0N33J0040000 | |
| 25 | TRUSS HEAD SCREW :M4*6 (+-) | 0N33P0046000 | |
| 26 | BRACKET :OPERATION PANEL :D | 0N33J0050000 | |
| 27 | COVER :PANEL BRACKET | 0N33J0120010 | |
| 28 | PAN HEAD SCREW :M4*5 (+-) | 0N33P0115000 | |
| 29 | BUSHING :HARNES :8R3 | 0N33G0950000 | |
| 30 | | | |
| 31 | | | |
| 32 | | | |
| 33 | | | |
| 34 | | | |
| 35 | | | |
| 36 | | | |
| 37 | | | |
| 38 | | | |
| 39 | | | |
| 40 | | | |
| 41 | | | |
| 42 | | | |
| 43 | | | |
| 44 | | | |
| 45 | | | |
| 46 | | | |
| 47 | | | |
| 48 | | | |
| 49 | | | |
| 50 | | | |

Note: As for parts with mark @, please follow our instructions on Table of Contents in your parts order.

(WM05)

ELECTRICAL PARTS



ELECTRICAL PARTS

F1-13

| No. | Part Name | Part No. | Remark |
|-----|--------------------------------|--------------|--------|
| 1 | CARD :CONTROL[A] | 0N33G0290A00 | |
| 2 | CAP SCREW WITH WASHER :M4*12 | 0N33P023C000 | |
| 3 | COVER :CARD | 0N33M0040000 | |
| 4 | BIND HEAD SCREW :M4*8 | 0N33P0158000 | |
| 5 | MAIN SWITCH[A] | 0N33M0100A00 | |
| 6 | BRACKET :MAIN SWITCH | 0N33M0100000 | |
| 7 | CARD :LAN AND USB CONNECTOR :B | 0N33G1130000 | |
| 8 | PAN HEAD SCREW :M3*4 (+-) | 0N33P0104000 | |
| 9 | PLASTIC WASHER :5.1*8*T0.25 | 0N33P0320000 | |
| 10 | HARNESS :POWER CONNECTOR | 0N33N0270000 | |
| 11 | SWITCH :POWER SUPPLY | 0N33G0310000 | |
| 12 | DUST PLUG :USB | 0N33G1000000 | |
| 13 | DUST PLUG :USB :B | 0N33G100B000 | |
| 14 | DUST PLUG :LAN | 0N33G1010000 | |
| 15 | CORD CLAMP :TS-1214 | 0N33G0940000 | |
| 16 | AC ADAPTER[A] | 0N33G0320A20 | |
| 17 | AC POWER CORD :UL SPEC. | 0N33N0400000 | |
| 17 | AC POWER CORD :CE SPEC. | 0N33N0410000 | |
| 17 | AC POWER CORD :PSE SPEC. | 0N33N0420000 | |
| 18 | | | |
| 19 | | | |
| 20 | | | |
| 21 | | | |
| 22 | | | |
| 23 | | | |
| 24 | | | |
| 25 | | | |
| 26 | | | |
| 27 | | | |
| 28 | | | |
| 29 | | | |
| 30 | | | |
| 31 | | | |
| 32 | | | |
| 33 | | | |
| 34 | | | |
| 35 | | | |
| 36 | | | |
| 37 | | | |
| 38 | | | |
| 39 | | | |
| 40 | | | |
| 41 | | | |
| 42 | | | |
| 43 | | | |
| 44 | | | |
| 45 | | | |
| 46 | | | |
| 47 | | | |
| 48 | | | |

Note: As for parts with mark @, please follow our instructions on Table of Contents in your parts order.

(WM05)

A, B

| No. | Part No. | Remark | No. | Part No. | Remark |
|--|--------------|---------------|-----|--------------|--------------------|
| A Flat Fillister Head Screw | | | B18 | S120031501TN | M3*15 |
| A1 | SA41730351CN | 1/8*44*3.5 | B19 | S120031601TN | M3*16 |
| A2 | SA41730501CN | 1/8*44*5 | B20 | S120031801TN | M3*18 |
| A3 | SA41730551CN | 1/8*44*5.5 | B21 | S120032003TD | M3*20 |
| A4 | SA41730601CN | 1/8*44*6 | B22 | S120032001TN | M3*20 |
| A5 | SA41740301CN | 9/64*40*3 | B23 | S120032501TN | M3*25 |
| A6 | SA41740402CN | 9/64*40*4 | B24 | S120033001TN | M3*30 Half Threads |
| A7 | SA41740401SA | 9/64*40*4 | B25 | S120040501TD | M4*5 |
| A8 | SA41740403CL | 9/64*40*4 | B26 | S120040502TN | M4*5 |
| A9 | SA41740404CN | 9/64*40*4 | B27 | S120040602TD | M4*6 |
| A10 | SA41740501CN | 9/64*40*5 | B28 | S120040601TN | M4*6 |
| A11 | SA41740601CN | 9/64*40*6 | B29 | S120040801TD | M4*8 |
| A12 | SA41740602CN | 9/64*40*6 | B30 | S120040802TN | M4*8 |
| A13 | SA41740701CN | 9/64*40*7 | B31 | S120041001TD | M4*10 |
| A14 | SA41740801CN | 9/64*40*8 | B32 | S120041002TN | M4*10 |
| A15 | SA41740802CN | 9/64*40*8 | B33 | S120041201TD | M4*12 |
| A16 | SA41740803CN | 9/64*40*8 | B34 | S120041202TN | M4*12 |
| A17 | SA41741001CN | 9/64*40*10 | B35 | S120041401TN | M4*14 |
| A18 | SA41741202CN | 9/64*40*12 | B36 | S120041502TD | M4*15 |
| A19 | SA41741501CN | 9/64*40*15 | B37 | S120041501TN | M4*15 |
| A20 | SA41750431TN | 11/64*40*4.3 | B38 | S120041601TN | M4*16 |
| A21 | SA41750701CN | 11/64*40*7 | B39 | S120041801TN | M4*18 |
| A22 | SA41750751CN | 11/64*40*7.5 | B40 | S120042002TD | M4*20 |
| A23 | SA41750901SH | 11/64*40*9 | B41 | S120042001TN | M4*20 |
| A24 | SA41751151CN | 11/64*40*11.5 | B42 | S120042502TD | M4*25 |
| A25 | SA41751201CN | 11/64*40*12 | B43 | S120042501TN | M4*25 |
| A26 | S141030801SC | M3*8 | B44 | S120042504TN | M4*25 Half Threads |
| A27 | S141030802SD | M3*8 | B45 | S120043001TN | M4*30 |
| A28 | S141031001CC | M3*10 | B46 | S120043502TD | M4*35 |
| A29 | S141041001SC | M4*10 | B47 | S120043501TN | M4*35 |
| A30 | SA41740653TB | 9/64*40*6.5 | B48 | S120044001TN | M4*40 |
| | | | B49 | S120044501TN | M4*45 |
| B Hexagon Socket Head Cap Screw | | | B50 | S120050601TN | M5*6 |
| B1 | S120020801TD | M2*8 | B51 | S120050801TD | M5*8 |
| B2 | S120021001TD | M2*10 | B52 | S120050802TN | M5*8 |
| B3 | S120480501TN | M2.6*5 | B53 | S120051001TD | M5*10 |
| B4 | S120030301TN | M3*3 | B54 | S120051002TN | M5*10 |
| B5 | S120030401TN | M3*4 | B55 | S120051004TP | M5*10 |
| B6 | S120030502TD | M3*5 | B56 | S120051201TD | M5*12 |
| B7 | S120030501TN | M3*5 | B57 | S120051202TN | M5*12 |
| B8 | S120030601TD | M3*6 | B58 | S120051401TN | M5*14 |
| B9 | S120030602TN | M3*6 | B59 | S120051501MZ | M5*15 |
| B10 | S120030804MZ | M3*8 | B60 | S120051502TD | M5*15 |
| B11 | S120030801TD | M3*8 | B61 | S120051503TN | M5*15 |
| B12 | S120030802TN | M3*8 | B62 | S120051601TN | M5*16 |
| B13 | S120031001TD | M3*10 | B63 | S120051801TN | M5*18 |
| B14 | S120031002TN | M3*10 | B64 | S120052001TD | M5*20 |
| B15 | S120031203TD | M3*12 | B65 | S120052002TN | M5*20 |
| B16 | S120031201TN | M3*12 | B66 | S120052201TN | M5*22 |
| B17 | S120031502TD | M3*15 | B67 | S120052301TN | M5*23 |

B, C

| No. | Part No. | Remark | No. | Part No. | Remark |
|----------|--------------------------------------|--------------------|----------|---------------------|--------------------|
| B | Hexagon Socket Head Cap Screw | | B117 | S120102001TN | M10*20 |
| B68 | S120052501TN | M5*25 | B118 | S120102501TN | M10*25 |
| B69 | S120053001TN | M5*30 | B119 | S120103001TN | M10*30 |
| B70 | S120053503TD | M5*35 | B120 | S120103501TN | M10*35 |
| B71 | S120053501TN | M5*35 | B121 | S120104001TN | M10*40 |
| B72 | S120053502TN | M5*35 Half Threads | B122 | S120123001TN | M12*30 |
| B73 | S120054001TN | M5*40 | B123 | S120123501TN | M12*35 |
| B74 | S120054501TN | M5*45 | B124 | S120081801TN | M8*18 |
| B75 | S120055001TN | M5*50 | B125 | S120470501TN | M2.5*5 |
| B76 | S120055002TN | M5*50 Half Threads | B126 | S120052502TD | M5*25 |
| B77 | S120055501TN | M5*55 | B127 | S120030302TD | M3*3 |
| B78 | S120056001TN | M5*60 | B128 | S120051504TN | M5*15 Low Head |
| B79 | S120056003TN | M5*60 Half Threads | B129 | S120031801TD | M3*18 |
| B80 | S120060801TN | M6*8 | B130 | S120052801TN | M5*28 |
| B81 | S120060901TN | M6*9 | B131 | S120044502TN | M4*45 Half Threads |
| B82 | S120061001TN | M6*10 | B132 | S120081501TD | M8*15 |
| B83 | S120061202TD | M6*12 | B133 | S120051802TD | M5*18 |
| B84 | S120061201TN | M6*12 | B134 | S120470401TN | M2.5*4 |
| B85 | S120061501TD | M6*15 | B135 | S120033003SD | M3*30 |
| B86 | S120061502TN | M6*15 | B136 | S120030402TD | M3*4 |
| B87 | S120061801TD | M6*18 | B137 | S120033002TN | M3*30 |
| B88 | S120061802TN | M6*18 | B138 | S120067502TN | M6*75 |
| B89 | S120062001TN | M6*20 | B139 | S120050501TN | M5*5 |
| B90 | S120062501TN | M6*25 | B140 | S120082001TD | M8*20 |
| B91 | S120063001TN | M6*30 | B141 | S120086002TD | M8*60 |
| B92 | S120063501TN | M6*35 | B142 | S120062002TD | M6*20 |
| B93 | S120064001TN | M6*40 | B143 | S120043503TD | M4*35 Half Threads |
| B94 | S120064501TN | M6*45 | B144 | S120044003TN | M4*40 Half Threads |
| B95 | S120064502TN | M6*45 Half Threads | B145 | S120030605TD | M3*6 Low Head |
| B96 | S120065001TN | M6*50 Half Threads | B146 | S120042202TD | M4*22 |
| B97 | S120066501TN | M6*65 | B147 | S120062502TD | M6*25 |
| B98 | S120067501TN | M6*75 Half Threads | B148 | S120045501TN | M4*55 Half Threads |
| B99 | S120068001TN | M6*80 Half Threads | B149 | S120123001TD | M12*30 |
| B100 | S12006A001TN | M6*100 | B150 | S120034001TN | M3*40 |
| B101 | S120081201TN | M8*12 | B151 | S120035001TN | M3*50 |
| B102 | S120081502TN | M8*15 | B152 | S120470502TD | M2.5*5 |
| B103 | S120081503TP | M8*15 | B153 | S120081202TD | M8*12 |
| B104 | S120081601TN | M8*16 | B154 | S120042201TN | M4*22 |
| B105 | S120082001TN | M8*20 | B155 | S120041802TD | M4*18 |
| B106 | S120082502TN | M8*25 | B156 | S120041602TD | M4*16 |
| B107 | S120083001TN | M8*30 | B157 | S120081504TN | M8*15 With Washer |
| B108 | S120083501TN | M8*35 | B158 | S120050602TD | M5*6 |
| B109 | S120084001TN | M8*40 | B159 | S120045001TD | M4*50 |
| B110 | S120084002TN | M8*40 Half Threads | B160 | S120044002TD | M4*40 |
| B111 | S120084501TN | M8*45 | B161 | S120082501TD | M8*25 |
| B112 | S120084502TN | M8*45 Half Threads | | | |
| B113 | S120085001TN | M8*50 | C | Hexagon Bolt | |
| B114 | S120086001TN | M8*60 | C1 | S121030601SD | M3*6 |
| B115 | S120087001TN | M8*70 | C2 | S121040801SD | M4*8 |
| B116 | S120102002TD | M10*20 | C3 | S121042501SD | M4*25 |

C, D, E

| No. | Part No. | Remark | No. | Part No. | Remark |
|-------------------------------------|--------------|---------------|-------------------------|--------------|--------------------|
| C Hexagon Bolt | | | E Pan Head Screw | | |
| C4 | S121051001SD | M5*10 | E1 | S160410141MZ | M1.4*1.4 |
| C5 | S121051502SC | M5*15 | E2 | S160020202MZ | M2*2 |
| C6 | S121051501SD | M5*15 | E3 | S160020301MZ | M2*3 |
| C7 | S121052001SD | M5*20 | E4 | S160020401MZ | M2*4 |
| C8 | S121061501SC | M6*15 | E5 | S160020801MZ | M2*8 |
| C9 | S121062501TN | M6*25 | E6 | S160470301MZ | M2.5*3 |
| C10 | S121064501SD | M6*45 | E7 | S160470402MZ | M2.5*4 |
| C11 | S121065001SC | M6*50 | E8 | S160470501MZ | M2.5*5 |
| C12 | S121065002SD | M6*50 | E9 | S160470801MZ | M2.5*8 |
| C13 | S121065501SD | M6*55 | E10 | S160471301MZ | M2.5*13 |
| C14 | S121066501SD | M6*65 | E11 | S160471302SD | M2.5*13 |
| C15 | S121067501SC | M6*75 | E12 | S160480601SD | M2.6*6 |
| C16 | S121081501TN | M8*15 | E13 | S160030301MZ | M3*3 |
| C17 | S121081801TN | M8*18 | E14 | S160030302SD | M3*3 |
| C18 | S121103001TN | M10*30 | E15 | S160030403CD | M3*4 |
| C19 | S121103502SC | M10*35 | E16 | S160030401MZ | M3*4 |
| C20 | S121103501TN | M10*35 | E17 | S160030402SD | M3*4 |
| C21 | S121104001SC | M10*40 | E18 | S160030501MZ | M3*5 |
| C22 | S121125001TN | M12*50 | E19 | S160030502SD | M3*5 |
| C23 | S12112B001TN | M12*110 | E20 | S160030601MZ | M3*6 |
| C24 | S121082501TN | M8*25 | E21 | S160030603SA | M3*6 |
| C25 | S121102501TN | M10*25 | E22 | S160030602SD | M3*6 |
| C26 | S121082202TN | M8*22 | E23 | S160030801MZ | M3*8 |
| C27 | S121041001SD | M4*10 | E24 | S160030803SA | M3*8 |
| C28 | S121040601SD | M4*6 | E25 | S160030802SD | M3*8 |
| C29 | S121061503SD | M6*15 | E26 | S160031001MZ | M3*10 |
| | | | E27 | S160031003SC | M3*10 Half Threads |
| D Round Fillister Head Screw | | | E28 | S160031002SD | M3*10 |
| D1 | SA43740401CL | 9/64*40*4 | E29 | S160031101SC | M3*11 Half Threads |
| D2 | SA43740501CL | 9/64*40*5 | E30 | S160031201MZ | M3*12 |
| D3 | SA43740502CN | 9/64*40*5 | E31 | S160031202SD | M3*12 |
| D4 | SA43740503CN | 9/64*40*5 | E32 | S160031401SA | M3*14 |
| D5 | SA43740504CN | 9/64*40*5 | E33 | S160031402SD | M3*14 |
| D6 | SA43740601CL | 9/64*40*6 | E34 | S160031501SD | M3*15 |
| D7 | SA43740602CN | 9/64*40*6 | E35 | S160031601SD | M3*16 |
| D8 | SA43740603CL | 9/64*40*6 | E36 | S160031801SD | M3*18 |
| D9 | SA43740604CN | 9/64*40*6 | E37 | S160032001SD | M3*20 |
| D10 | SA43740682CN | 9/64*40*6.8 | E38 | S160033001SD | M3*30 |
| D11 | SA43740801CL | 9/64*40*8 | E39 | S160034002SD | M3*40 |
| D12 | SA43740802CN | 9/64*40*8 | E40 | S160035001SD | M3*50 Half Threads |
| D13 | SA43741001CN | 9/64*40*10 | E41 | S160040401SD | M4*4 |
| D14 | SA43741201CN | 9/64*40*12 | E42 | S160040501SD | M4*5 |
| D15 | SA43750601CN | 11/64*40*6 | E43 | S160040601MZ | M4*6 |
| D16 | SA43750652CN | 11/64*40*6.5 | E44 | S160040602SD | M4*6 |
| D17 | SA43751051CN | 11/64*40*10.5 | E45 | S160040801SD | M4*8 |
| D18 | SA43751201CN | 11/64*40*12 | E46 | S160041001SD | M4*10 |
| D19 | SA43751501CN | 11/64*40*15 | E47 | S160041201SD | M4*12 |
| D20 | SA43812451CN | 9/32*28*24.5 | E48 | S160041501SD | M4*15 |
| D21 | S143030501SD | M3*5 | E49 | S160041801SD | M4*18 |

E, F, G, H

| No. | Part No. | Remark | No. | Part No. | Remark |
|---------------------------------|--------------|-------------|---------------------------------------|--------------|-------------|
| E Pan Head Screw | | | F18 | S150031001SD | M3*10 |
| E50 | S160043001SD | M4*30 | F19 | S150031201MZ | M3*12 |
| E51 | S160045001SD | M4*50 | F20 | S150031202SD | M3*12 |
| E52 | S160046001SD | M4*60 | F21 | S150031501MZ | M3*15 |
| E53 | S160050601SD | M5*6 | F22 | S150031601SD | M3*16 |
| E54 | S160050701SD | M5*7 | F23 | S150040501SD | M4*5 |
| E55 | S160050801SD | M5*8 | F24 | S150040602MZ | M4*6 |
| E56 | S160051002MZ | M5*10 | F25 | S150040601SD | M4*6 |
| E57 | S160051001SD | M5*10 | F26 | S150040801MZ | M4*8 |
| E58 | S160051201SD | M5*12 | F27 | S150040802SD | M4*8 |
| E59 | S160053001SD | M5*12 | F28 | S150041001MZ | M4*10 |
| E60 | S160051501SD | M5*15 | F29 | S150041002SD | M4*10 |
| E61 | S160054501SD | M5*45 | F30 | S150041201SD | M4*12 |
| E62 | S160055001SD | M5*50 | F31 | S150041401SD | M4*14 |
| E63 | S160056001SD | M5*60 | F32 | S150041501SD | M4*15 |
| E64 | S160047001SD | M4*70 | F33 | S150042001SD | M4*20 |
| E65 | S160480801SD | M2.6*8 | F34 | S150042201SD | M4*22 |
| E66 | S160030504SC | M3*5 | F35 | S150042501SD | M4*25 |
| E67 | S160480602MZ | M2.6*6 | F36 | S150050601SD | M5*6 |
| E68 | S160031403MZ | M3*14 | F37 | S150050801SD | M5*8 |
| E69 | S160042001SD | M4*20 | F38 | S150051001MZ | M5*10 |
| E70 | S160044501SD | M4*45 | F39 | S150051002SD | M5*10 |
| E71 | S160020203SD | M2*2 | F40 | S150051201SD | M5*12 |
| E72 | S160470502SD | M2.5*5 | F41 | S150051501SD | M5*15 |
| E73 | SA60740551TN | 9/64*40*5.5 | F42 | S150053001SD | M5*30 |
| E74 | S160431001MZ | M1.7*10 | F43 | S150053501SD | M5*35 |
| E75 | S160043501SD | M4*35 | F44 | S150054001SD | M5*40 |
| E76 | S160020501SD | M2*5 | F45 | S150061502SC | M6*15 |
| E77 | S160052501SD | M5*25 | F46 | S150061503SD | M6*15 |
| E78 | S160044001SD | M4*40 | F47 | S150063501SD | M6*35 |
| E79 | S160470403SD | M2.5*4 | F48 | S150081201SD | M8*12 |
| | | | F49 | S150087001TN | M8*70 |
| F Countersunk Head Screw | | | F50 | S150061801SD | M6*18 |
| F1 | SA51741001CN | 9/64*40*10 | F51 | S150052501SD | M5*25 |
| F2 | SA50750801CN | 11/64*40*8 | F52 | S150040502MZ | M4*5 |
| F3 | S150020601SD | M2*6 | | | |
| F4 | S150030401MZ | M3*4 | G Round Countersunk Head Screw | | |
| F5 | S150030402SD | M3*4 | G1 | SA53730601CL | 1/8*44*6 |
| F6 | S150030501MZ | M3*5 | G2 | SA53740301CL | 9/64*40*3 |
| F7 | S150030502SD | M3*5 | G3 | SA53740351CL | 9/64*40*3.5 |
| F8 | S151030601SD | M3*6 | G4 | SA53740401CL | 9/64*40*4 |
| F9 | S150030601MZ | M3*6 | G5 | SA53740601CL | 9/64*40*6 |
| F10 | S150030602SD | M3*6 | G6 | SA53740701CL | 9/64*40*7 |
| F11 | S150030701SD | M3*7 | G7 | SA53740951CL | 9/64*40*9.5 |
| F12 | S151030801SD | M3*8 | G8 | SA53741201CL | 9/64*40*12 |
| F13 | S150030801MZ | M3*8 | G9 | SA53740681CL | 9/64*40*6.8 |
| F14 | S150030804SC | M3*8 | | | |
| F15 | S150030802SD | M3*8 | H Truss Head Screw | | |
| F16 | S150030803SN | M3*8 | H1 | SA30730701CL | 1/8*44*7 |
| F17 | S150031002MZ | M3*10 | H2 | SA30740301CL | 9/64*40*3.5 |

H, J, K

| No. | Part No. | Remark | No. | Part No. | Remark |
|----------|------------------|-----------|----------------------------|--------------|--------------|
| H | Truss Head Screw | | H52 | S130052001SD | M5*20 |
| H3 | SA30740401CL | 9/64*40*4 | H53 | S130052502SD | M5*25 |
| H4 | SA31740401CM | 9/64*40*4 | H54 | S130053001SD | M5*30 |
| H5 | SA30740601CL | 9/64*40*6 | H55 | S130053501SD | M5*35 |
| H6 | SA30740801CL | 9/64*40*8 | H56 | S130060801SD | M6*8 |
| H7 | S130470301MZ | M2.5*3 | H57 | S130061001SD | M6*10 |
| H8 | S130470302SD | M2.5*3 | H58 | S130062201SD | M6*22 |
| H9 | S130470401MZ | M2.5*4 | H59 | S130062501SD | M6*25 |
| H10 | S130470402SA | M2.5*4 | H60 | S130063501SD | M6*35 |
| H11 | S130470403SD | M2.5*4 | H61 | S130064001SD | M6*40 |
| H12 | S130030301MZ | M3*3 | H62 | S130031501SD | M3*15 |
| H13 | S130030302SD | M3*3 | H63 | S130043501SD | M4*35 |
| H14 | S130030402SD | M3*4 | H64 | S130020201SD | M2*2 |
| H15 | S130030501MZ | M3*5 | H65 | S130470501SD | M2.5*5 |
| H16 | S130030502SD | M3*5 | H66 | S130052002MZ | M5*20 |
| H17 | S130030601MZ | M3*6 | H67 | S130054501SE | M5*45 |
| H18 | S130030602SD | M3*6 | H68 | S130050502MZ | M5*5 |
| H19 | S130030603SA | M3*6 | H69 | S130054001SD | M5*40 |
| H20 | S130030802SD | M3*8 | H70 | S130055001SD | M5*50 |
| H21 | S130030803SA | M3*8 | H71 | S130030801MZ | M3*8 |
| H22 | S130031001MZ | M3*10 | H72 | S130052201SD | M5*22 |
| H23 | S130031002SD | M3*10 | H73 | S130041802MZ | M4*18 |
| H24 | S130032001SD | M3*20 | H74 | S130055501SD | M5*55 |
| H25 | S130040401MZ | M4*4 | H75 | S130041202SD | M4*12 JIS |
| H26 | S130040401SD | M4*4 | H76 | SA30740501CL | 9/64*40*5 |
| H27 | S130040501MZ | M4*5 | H77 | SA30741001CL | 9/64*40*10 |
| H28 | S130040502SD | M4*5 | | | |
| H29 | S130040601MZ | M4*6 | J Round Head Screw | | |
| H30 | S130040602SD | M4*6 | J1 | S162020301MZ | M2*3 |
| H31 | S130040651SD | M4*6.5 | J2 | S162030801SD | M3*8 |
| H32 | S130040801MZ | M4*8 | J3 | S162030802SE | M3*8 |
| H33 | S130040802SD | M4*8 | J4 | S162031001MZ | M3*10 |
| H34 | S130040803MZ | M4*8 JIS | | | |
| H35 | S130041002MZ | M4*10 | K Slotted Set Screw | | |
| H36 | S130041001SD | M4*10 | K1 | SA71730351CN | 1/8*44*3.5 |
| H37 | S130041201SD | M4*12 | K2 | SA71740601CN | 9/64*40*6 |
| H38 | S130041502SD | M4*15 | K3 | SA71750251CN | 11/64*40*2.5 |
| H39 | S130042001SD | M4*20 | K4 | SA71750351CN | 11/64*40*3.5 |
| H40 | S130050501SD | M5*5 | K5 | SA71750401CN | 11/64*40*4 |
| H41 | S130050602MZ | M5*6 | K6 | SA71750501CN | 11/64*40*5 |
| H42 | S130050601SD | M5*6 | K7 | SA71790501CN | 15/64*28*5 |
| H43 | S130050651SD | M5*6.5 | K8 | SA71791001CN | 15/64*28*10 |
| H44 | S130050701SD | M5*7 | K9 | SA71791501CN | 15/64*28*15 |
| H45 | S130050801MZ | M5*8 | K10 | SA71791701CN | 15/64*28*17 |
| H46 | S130050802SD | M5*8 | K11 | SA71800401CN | 1/4*40*4 |
| H47 | S130051002MZ | M5*10 | K12 | SA71800451CN | 1/4*40*4.5 |
| H48 | S130051001SD | M5*10 | K13 | SA71800501CN | 1/4*40*5 |
| H49 | S130051201MZ | M5*12 | K14 | SA71800601CN | 1/4*40*6 |
| H50 | S130051202SD | M5*12 | K15 | SA71800801CN | 1/4*40*8 |
| H51 | S130051501SD | M5*15 | K16 | SA71811201CN | 9/32*28*12 |

K, L, M, N

| No. | Part No. | Remark | No. | Part No. | Remark |
|----------|-------------------------------|----------------------|----------|----------------------------------|-------------|
| K | Slotted Set Screw | | L46 | S170031501TN | M3*15 |
| K17 | S171050601TN | M5*6 | | | |
| K18 | S171030601SD | M3*6 | M | Hexagon Socket Head Button Screw | |
| | | | M1 | S124030401SC | M3*4 |
| L | Hexagon Socket Head Set Screw | | M2 | S124040601SC | M4*6 |
| L1 | SA70730251CN | 1/8*44*2.5 | M3 | S124040802SC | M4*8 |
| L2 | SA70730301CN | 1/8*44*3 | M4 | S124040803SD | M4*8 |
| L3 | SA70750901CN | 11/64*28*9 | M5 | S124051001SC | M5*10 |
| L4 | SA70750401CN | 11/64*40*4 | M6 | S124051002SD | M5*10 |
| L5 | SA70750601CN | 11/64*40*6 | M7 | S124051501SD | M5*15 |
| L6 | SA70750801CN | 11/64*40*8 | M8 | S124081201SC | M8*12 |
| L7 | SA70790401CN | 15/64*28*4 | M9 | S124081202SD | M8*12 |
| L8 | SA70790901CN | 15/64*28*9 | M10 | S124081501SD | M8*15 |
| L9 | S170470301TN | M2.5*3 | M11 | S124030501SC | M3*5 |
| L10 | S170030201TN | M3*2 | M12 | S124030801SC | M3*8 |
| L11 | S170030301TN | M3*3 | M13 | S124030502TC | M3*5 |
| L12 | S170030401TN | M3*4 | M14 | S124030402SD | M3*4 |
| L13 | S170030501TN | M3*5 | M15 | S124030601SD | M3*6 |
| L14 | S170030601TN | M3*6 | M16 | S124040401SD | M4*4 |
| L15 | S170030801TN | M3*8 | M17 | S124030602SC | M3*6 |
| L16 | S170040301TN | M4*3 | M18 | S124030503SD | M3*5 |
| L17 | S170040401TN | M4*4 | M19 | S124031002SD | M3*10 |
| L18 | S170040501TN | M4*5 | M20 | S124041001SD | M4*10 |
| L19 | S170040601TN | M4*6 | M21 | S124051201SD | M5*12 |
| L20 | S170040602TN | M4*6 Half Threads | | | |
| L21 | S170040801TN | M4*8 | N | Screw with Washer | |
| L22 | S170041001TN | M4*10 | N1 | S660480601SE | M2.6*6 |
| L23 | S170041201TN | M4*12 | N2 | S660030601SE | M3*6 |
| L24 | S170050401TN | M5*4 | N3 | S660030801SE | M3*8 |
| L25 | S170050501TN | M5*5 | N4 | S660031001SE | M3*10 |
| L26 | S170050601TN | M5*6 | N5 | S660031501SE | M3*15 |
| L27 | S170050801TN | M5*8 | N6 | S660031601SE | M3*16 |
| L28 | S170051001TN | M5*10 | N7 | S660031801SE | M3*18 |
| L29 | S170051201TN | M5*12 | N8 | S660040601SE | M4*6 |
| L30 | S170051501TN | M5*15 | N9 | S660040801SE | M4*8 |
| L31 | S170060501TN | M6*5 | N10 | S660041001SE | M4*10 |
| L32 | S170060601TN | M6*6 | N11 | S660041201SE | M4*12 |
| L33 | S170060801TN | M6*8 | N12 | S660045501SE | M4*55 |
| L34 | S170061001TN | M6*10 | N13 | S660051001SE | M5*10 |
| L35 | S170061801TN | M6*18 | N14 | S660051201SE | M5*12 |
| L36 | S170080801TN | M8*8 | N15 | S660051401SE | M5*14 |
| L37 | S170081001TN | M8*10 | N16 | S660051801SE | M5*18 |
| L38 | S170081501TN | M8*15 | N17 | S660030801MZ | M3*8 |
| L39 | S170031001TN | M3*10 | N18 | S660030502MZ | M3*5 |
| L40 | S170031201TN | M3*12 | N19 | S660031502MZ | M3*15 |
| L41 | S170053001TN | M5*30 | N20 | S660030603S1 | M3*6 (P-4) |
| L42 | S170061201TN | M6*12 | N21 | S660030802S1 | M3*8 (P-3) |
| L43 | S174060601TN | M6*6B | N22 | S660030604S1 | M3*6 (P-3) |
| L44 | S170050802TN | M5*8 Narrow Treading | N23 | S660031802S1 | M3*18 (P-3) |
| L45 | S170050602TN | M5*6 Narrow Treading | N24 | S660040602S1 | M4*6 (P-3) |

N, P, R

| No. | Part No. | Remark | No. | Part No. | Remark |
|----------------------------|--------------|---------------------------|-----------------|--------------|----------------------|
| N Screw with Washer | | | P29 | S212050002SD | M5 Type 3 |
| N25 | S660040802S1 | M4*8 (P-3) | P30 | S217050001SD | M5 Cap |
| N26 | S660041002S1 | M4*10 (P-3) | P31 | S210060001SC | M6 Type 1 |
| N27 | S660043001S1 | M4*30 (P-3) | P32 | S210060002SC | M6 Type 1 (Left) |
| N28 | S660051002S1 | M5*10 (P-3) | P33 | S210060003SD | M6 Type 1 |
| N29 | S660031803S1 | M3*18 (P-4) | P34 | S210060004SD | M6 Type 1 (Left) |
| N30 | S660030505S1 | M3*5 (P-4) | P35 | S212060001SC | M6 Type 3 |
| N31 | S660031504S1 | M3*15 (P-4) | P36 | S210080001SC | M8 Type 1 |
| N32 | S660031002S1 | M3*10 (P-4) | P37 | S210080002SD | M8 Type 1 |
| N33 | S660040803S1 | M4*8 (P-4) | P38 | S212080001SC | M8 Type 3 |
| N34 | S660030504S1 | M3*5 (P-3) | P39 | S212080002SD | M8 Type 3 |
| N35 | S660020401S1 | M2*4 (P-4) | P40 | S210100001SC | M10 Type 1 |
| N36 | S660031505S1 | M3*15 (P-3) | P41 | S213100002SD | M10 With Flange |
| N37 | S660041202S1 | M4*12 (P-3) | P42 | S213100003SD | M10 With Disk Spring |
| N38 | S660480401S1 | M2.6*4 (P-4) | P43 | S210120001SC | M12 Type 1 |
| N39 | S660031003S1 | M3*10 (P-3) | P44 | S212120001SC | M12 Type 3 |
| N40 | S660031602S1 | M3*16 (P-3) | P45 | S212120002SD | M12 Type 3 |
| N41 | S660030605S1 | M3*6 (P-3) FOR THIN PLATE | P46 | S210160001SD | M16 Type 1 |
| N42 | S660030803S1 | M3*8 (P-4) | P47 | S212160002SC | M16 Type 1 |
| N43 | S660031201S1 | M3*12 (P-3) | P48 | S212160001SD | M16 Type 3 |
| | | | P49 | S210200001SC | M20 Type 1 |
| P Nut | | | P50 | S212470001SC | M2.5 Type 3 |
| P1 | SB10730601CN | 1/8*44*6*3 | P51 | SB12750701SC | 11/64*7*2.2 Type 3 |
| P2 | SB10740601CL | 9/64*40*6*2 | P52 | S211040001SD | M4 Type 2 |
| P3 | SB10740602CN | 9/64*40*6*3 | P53 | SB12740601MZ | 9/64*6*2 Type 3 |
| P4 | SB10750602CN | 11/64*40*6*2 | P54 | SB10750601CN | 11/64*6*2.2 |
| P5 | SB10750603CN | 11/64*40*6*3 | P55 | S212030003SD | M3 Type 3 |
| P6 | SB10750701CN | 11/64*40*7*3 | P56 | S217060001SD | M6 Cap |
| P7 | SB11750701CN | 11/64*40*7*3 | P57 | S217030001SD | M3 Cap |
| P8 | S210420001XA | M1.6 Type 1 | P58 | S212200001SC | M20 Type 3 |
| P9 | S210020001SD | M2 Type 1 | P59 | S212160002SC | M16 Type 3 |
| P10 | S212020002SD | M2 Type 3 | P60 | SB10750702CN | 11/64*7*2.2 |
| P11 | S210460002SD | M2.3 Type 1 | P61 | SB10740605CN | 9/64*40*6*1.5 |
| P12 | S210470001MZ | M2.5 Type 1 | P62 | S213080002SD | M8 With Flange |
| P13 | S212480001SD | M2.6 Type 3 | P63 | S213080001SD | M8 With Disk Spring |
| P14 | S210030001MZ | M3 Type 1 | | | |
| P15 | S210030002SC | M3 Type 1 | R Washer | | |
| P16 | S210030003SD | M3 Type 1 | R1 | S301410301MZ | Plain M1.4*3*t0.3 |
| P17 | S215030001SD | M3 Thumbscrew Type 2 | R2 | S301020351XZ | Plain M2*3.5*t0.5 |
| P18 | S212030001SC | M3 Type 3 | R3 | S301020431SD | Plain M2*4.3*t0.3 |
| P19 | S212030002SD | M3 Type 3 | R4 | S301480501XB | Plain M2.6*5*t0.5 |
| P20 | S212530001SC | M3.5 Type 3 | R5 | S301480751XB | Plain M2.6*7.5*t0.5 |
| P21 | S210040001SC | M4 Type 1 | R6 | S301030602XZ | Plain M3*6*t0.3 |
| P22 | S210040002SD | M4 Type 1 | R7 | S301030603SC | Plain M3*6*t0.5 |
| P23 | S212040001SC | M4 Type 3 | R8 | S301030601SD | Plain M3*6*t0.5 |
| P24 | S212040002SD | M4 Type 3 | R9 | S301030701SD | Plain M3*7*t0.5 |
| P25 | S217040001SD | M4 Cap | R10 | S301030804SD | Plain M3*8*t0.3 |
| P26 | S210050001SC | M5 Type 1 | R11 | S301030805MZ | Plain M3*8*t0.5 |
| P27 | S210050002SD | M5 Type 1 | R12 | S301030801SC | Plain M3*8*t0.5 |
| P28 | S212050001SC | M5 Type 3 | R13 | S301030802SD | Plain M3*8*t0.5 |

R

| No. | Part No. | Remark | No. | Part No. | Remark |
|----------|---------------|--------------------|-----|--------------|-----------------------|
| R | Washer | | R63 | S304040851TP | With teeth M4 |
| R14 | S301030803SD | Plain M3*8*t1 | R64 | S304051001TP | With teeth M5 |
| R15 | S301040805SC | Plain M4*8*t0.5 | R65 | S306080001SC | Slant M8 |
| R16 | S301040802SD | Plain M4*8*t0.5 | R66 | S303040801SC | Disk Spring M4 |
| R17 | S301040804SC | Plain M4*8*t0.8 | R67 | S301041005EZ | Plain M4*10*t0.8 |
| R18 | S301040803SD | Plain M4*8*t0.8 | R68 | S301470252MZ | Plain M2.5*5*t0.5 |
| R19 | S301041004MZ | Plain M4*10*t0.8 | R69 | S301030605SD | Plain M3*6*t1.0 |
| R20 | S301041002SC | Plain M4*10*t0.8 | R70 | S301030604MZ | Plain M3*6*T0.5 |
| R21 | S301041003SD | Plain M4*10*t0.8 | R71 | S305051101TN | Wave M5 |
| R22 | S301041201SC | Plain M4*12*t1 | R72 | S301470253SD | Plain M2.5*5*t0.5 |
| R23 | S301051002SC | Plain M5*10*t0.8 | R73 | S301470251SC | Plain M2.5*5*t0.5 |
| R24 | S301051003SD | Plain M5*10*t0.8 | R74 | S305101451TN | Wave M10 |
| R25 | S301051204MZ | Plain M5*12*t0.8 | R75 | S304080001TP | With teeth M8 |
| R26 | S301051202SC | Plain M5*12*t0.8 | R76 | S301061152SD | Plain M6*11.5*t0.8 |
| R27 | S301051203SD | Plain M5*12*t0.8 | R77 | S301122601SC | Plain M12*26*t2.3 |
| R28 | S301061102SC | Plain M6*11*t1.6 | R78 | S304060002SD | With teeth M6 |
| R29 | S301061151SC | Plain M6*11.5*t0.8 | R79 | S304040852TP | With teeth M4 Outward |
| R30 | S301061301SC | Plain M6*13*t1.0 | R80 | S301041202SD | Plain M4*12*t1.0 |
| R31 | S301061302SD | Plain M6*13*t1.0 | R81 | S301040901EZ | Plain M4*9*t0.3 |
| R32 | S301061601SC | Plain M6*16*t1.0 | R82 | S301051207EZ | Plain M5*12*t1.0 |
| R33 | S301081601SD | Plain M8*16*t1.2 | R83 | S301122601SD | Plain M12*26*t2.3 |
| R34 | S301081801SC | Plain M8*18*t1.6 | R84 | S402120002KD | Spring M12 |
| R35 | S301081802SD | Plain M8*18*t1.6 | | | |
| R36 | S301081803SC | Plain M8*18*t3.2 | | | |
| R37 | S301082201SC | Plain M8*22*t3.2 | | | |
| R38 | S301102201SC | Plain M10*22*t1.6 | | | |
| R39 | S301102601SC | Plain M10*26*t3.2 | | | |
| R40 | S301102602SD | Plain M10*26*t3.2 | | | |
| R41 | S301122051SC | Plain M12*20.5*t2 | | | |
| R42 | S301163201SD | Plain M16*32*t2.5 | | | |
| R43 | S402020001KD | Spring M2 | | | |
| R44 | S402480001KC | Spring M2.6 | | | |
| R45 | S402030001KC | Spring M3 | | | |
| R46 | S402030002KD | Spring M3 | | | |
| R47 | S402530001KC | Spring M3.5 | | | |
| R48 | S402040001KC | Spring M4 | | | |
| R49 | S402040002KD | Spring M4 | | | |
| R50 | S402050001KC | Spring M5 | | | |
| R51 | S402050002KD | Spring M5 | | | |
| R52 | S402050003MZ | Spring M5 | | | |
| R53 | S402060001KC | Spring M6 | | | |
| R54 | S402060002KD | Spring M6 | | | |
| R55 | S402080001KC | Spring M8 | | | |
| R56 | S402080002KD | Spring M8 | | | |
| R57 | S402100001KC | Spring M10 | | | |
| R58 | S402100002KD | Spring M10 | | | |
| R59 | S402120001KC | Spring M12 | | | |
| R60 | S305041101TP | Wave M4 | | | |
| R61 | S305051001TN | Wave M5 | | | |
| R62 | S305061051TN | Wave M6 | | | |

1st Edition July, 2017

5th Edition May, 2019

■ **Manufactured by:**
TISM Co.,Ltd.

NO.1800, Ushiyama-cho, Kasugai, Aichi-pref., 486-0901, Japan
Telephone:81-568-33-1161 Fax:81-568-33-1191

■ **Distributed by:**
Tajima Industries Ltd.

19-22, Shirakabe, 3-chome, Higashi-ku, Nagoya, 461-0011, Japan
Telephone:81-52-932-3444 Fax:81-52-932-2457

●Copy, reprint, or reform of a part or whole of this manual without permission is prohibited.

THE TAJIMA GROUP

<http://www.tajima.com>

Tajima Industries Ltd.

19-22, Shirakabe, 3-chome, Higashi-ku, Nagoya, 461-0011, JAPAN
TEL.81-52-932-3444 FAX.81-52-932-2457

TISM Co.,Ltd.

NO.1800, Ushiyama-cho, Kasugai, Aichi-pref., 486-0901, JAPAN
TEL.81-568-33-1161 FAX.81-568-33-1191