

PARTS LIST

TWMX-C

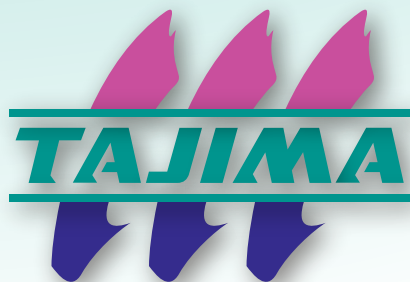


Table of Contents

● GENERAL VIEW	
● FRAMING.....	MW-1
● MAIN SHAFT DRIVE SYSTEM.....	MW-2
● CYLINDER BED 1.....	MW-3-1
● CYLINDER BED 2.....	MW-3-2
● COLOR CHANGE SYSTEM.....	MW-4
● ARM 1.....	MW-5-1
● ARM 2.....	MW-5-2
● ARM 3.....	MW-5-3
● NEEDLE BAR CASE 1.....	MW-6-1
● NEEDLE BAR CASE 2.....	MW-6-2
● X-AXIS DRIVE SYSTEM.....	MW-7
● Y-AXIS DRIVE SYSTEM.....	MW-8
● TENSION BASE.....	MW-9
● THREAD STAND.....	MW-10
● OPERATION PANEL.....	MW-11
● ELECTRICAL PARTS.....	MW-12
● SIGNAL TOWER (OPTION).....	MW-13
● BORDER FRAME, STAND (OPTION).....	MW-14
● X-EXTENSION UNIT 1 (OPTION).....	MW-15-1
● X-EXTENSION UNIT 2 (OPTION).....	MW-15-2

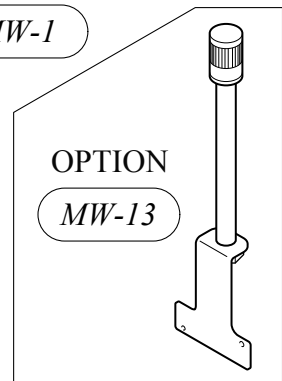
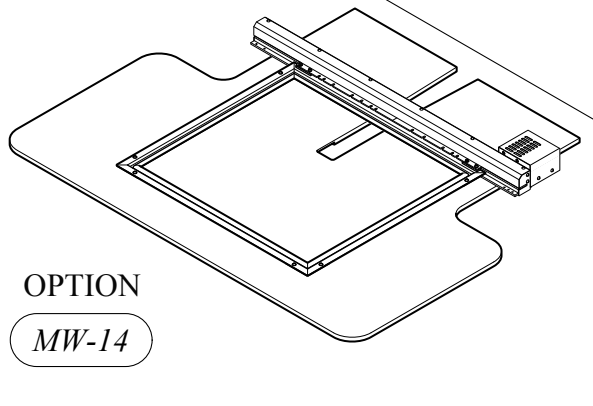
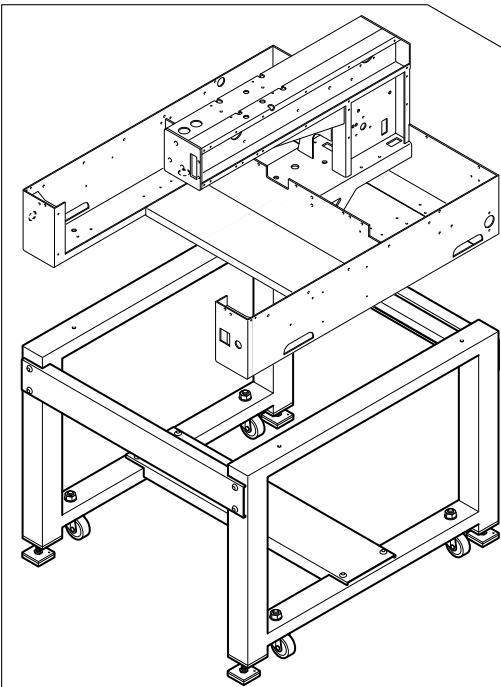
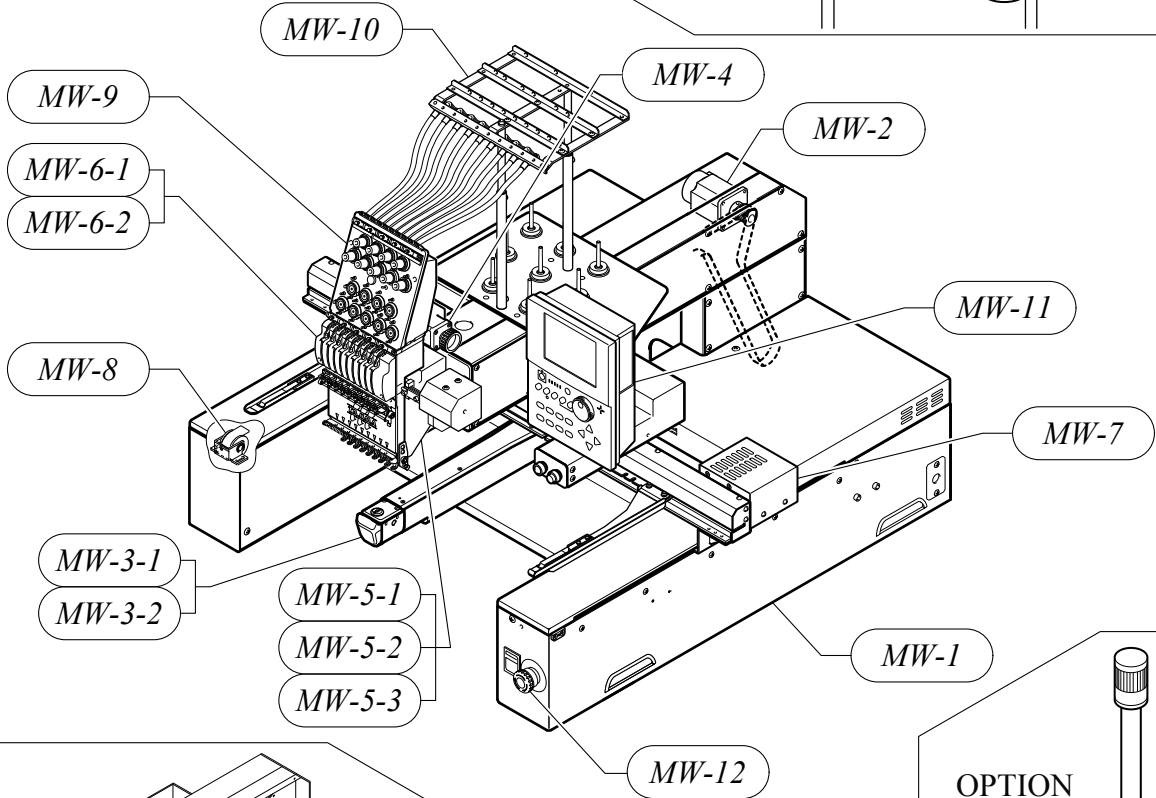
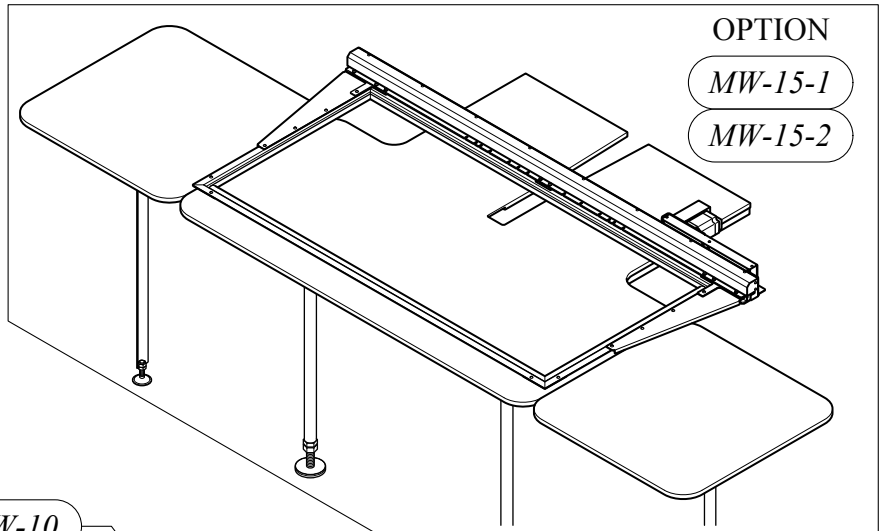
Part Nos. of screws, nuts, washers etc. are listed at the end of volume.

*Regarding the part number that contains description of @, the part differs depending on model, spec. etc.

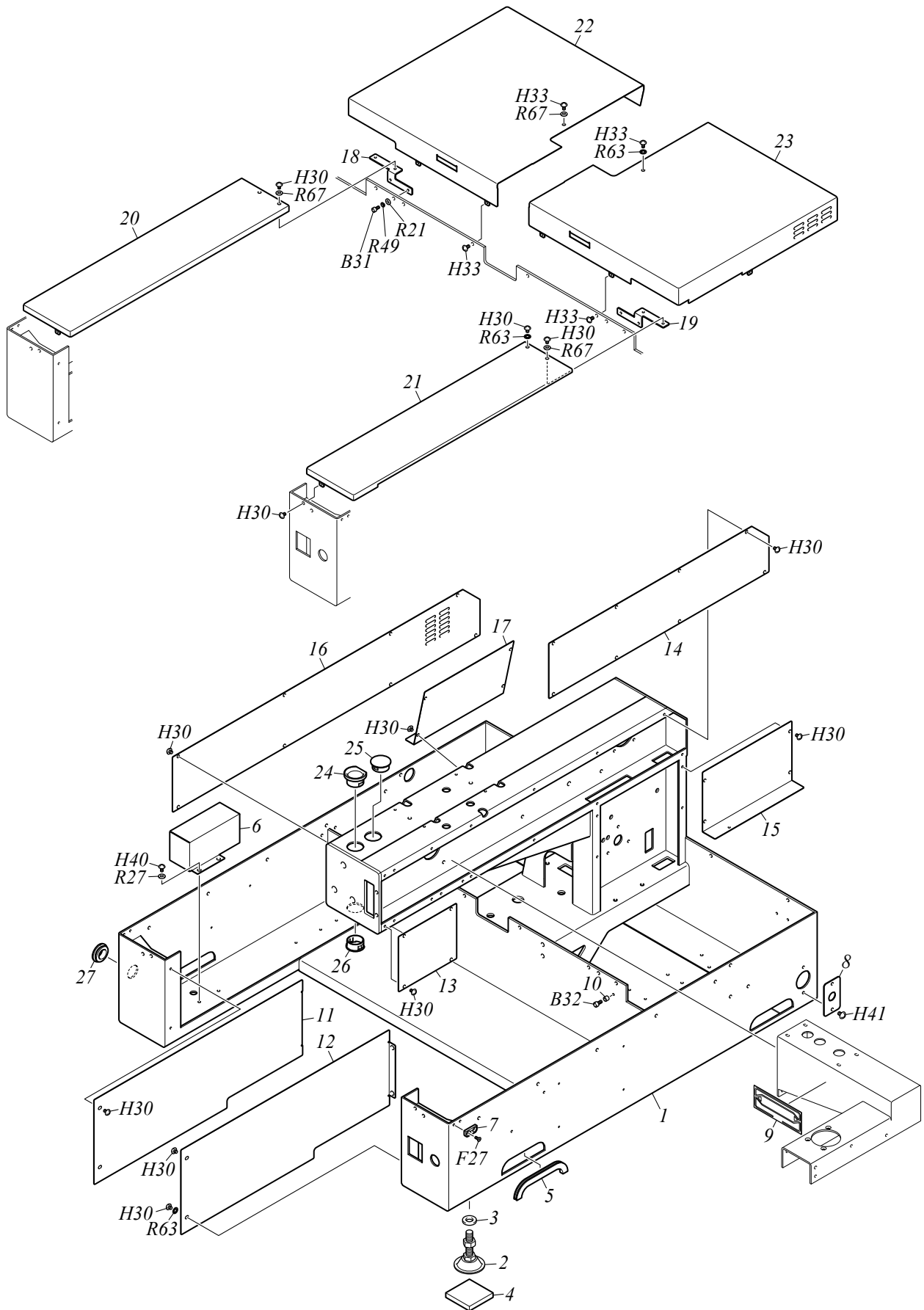
*When you place an order of such a part, please also inform us of your model, embroidery space and manufacturing number of the machine.

Ex.	TWMX-C1201	550 x 600S	No.MWY01234
	[Model]	[Emb. Space]	[Mfg. No.]

GENERAL VIEW



FRAMING



FRAMING

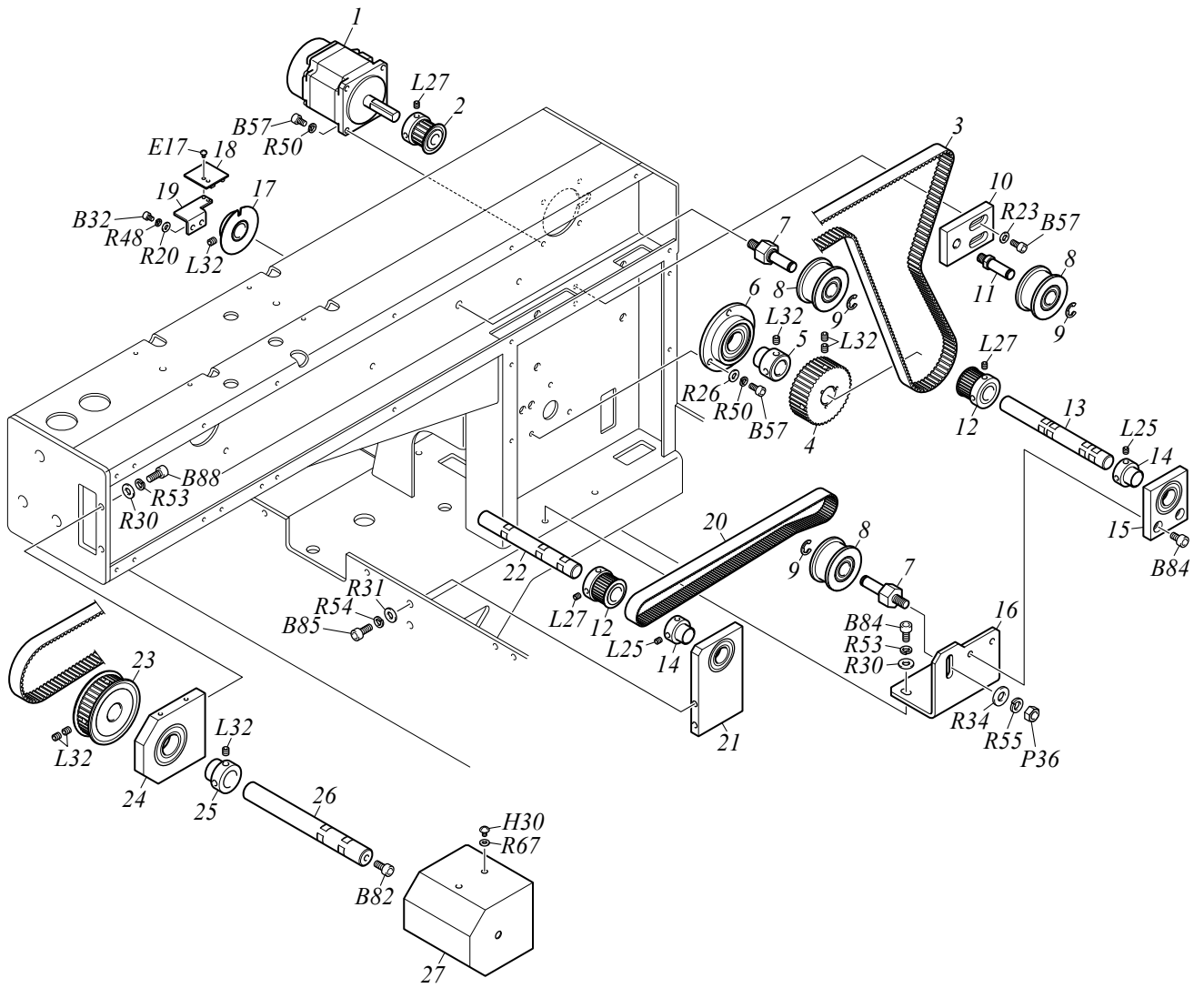
MW-1

No.	Part Name	Part No.	Remark
1	STAND :0001/055*600S	NS416001@000	
2	ADJUSTER :55MM DIA.	614300280000	
3	PLAIN WASHER :M14*30*T2.6	S301143001SC	
4	VIBRATION-PREVENTIVE RUBBER	030520020000	
5	REGULAR TRIM :125MM	617300040000	
6	COVER :HANDLE :FRONT	030440100010	
7	BASE :TABLE BRACKET	030610140000	
8	HOLDER :HARNESS :C	03014003C000	
9	MAIN NAME PLATE :TWMX-C	14S4100@0010	
10	DAMPER RING :4MM DIA.	080320410000	
11	COVER :STAND :L	03044046@000	
12	COVER :STAND :R	03044047@000	
13	COVER :RIGHT-SIDE BOX :A :UPPER	03044050@000	
14	COVER :RIGHT-SIDE BOX :B :UPPER	03044051@000	
15	COVER :RIGHT-SIDE BOX :LOWER	03044052@000	
16	COVER :LEFT-SIDE BOX :UPPER	03044053@000	
17	COVER :LEFT-SIDE BOX :LOWER	03044054@000	
18	BRACKET :COVER :FRONT L	03046020L000	
19	BRACKET :COVER :FRONT R	03046020R000	
20	COVER :STAND :FRONT L	03044048L000	
21	COVER :STAND :FRONT R	03044048R000	
22	COVER :STAND :REAR L	03044049L000	
23	COVER :STAND :REAR R	03044049R000	
24	BUSHING :SEQUIN :TWIN TYPE	030750020010	
25	CAP :HARNESS :30MM DIA.	0J1502100010	
26	BUSHING :HARNESS	0J1501100020	
27	GROMMET WITH FILM :26A	644500210000	
28			
29			
30			
31			
32			
33			
34			
35			
36			
37			
38			
39			
40			
41			
42			
43			
44			
45			
46			
47			
48			
49			
50			

Note: As for parts with mark @, please follow our instructions on Table of Contents in your parts order.

(XL03)

MAIN SHAFT DRIVE SYSTEM



MAIN SHAFT DRIVE SYSTEM

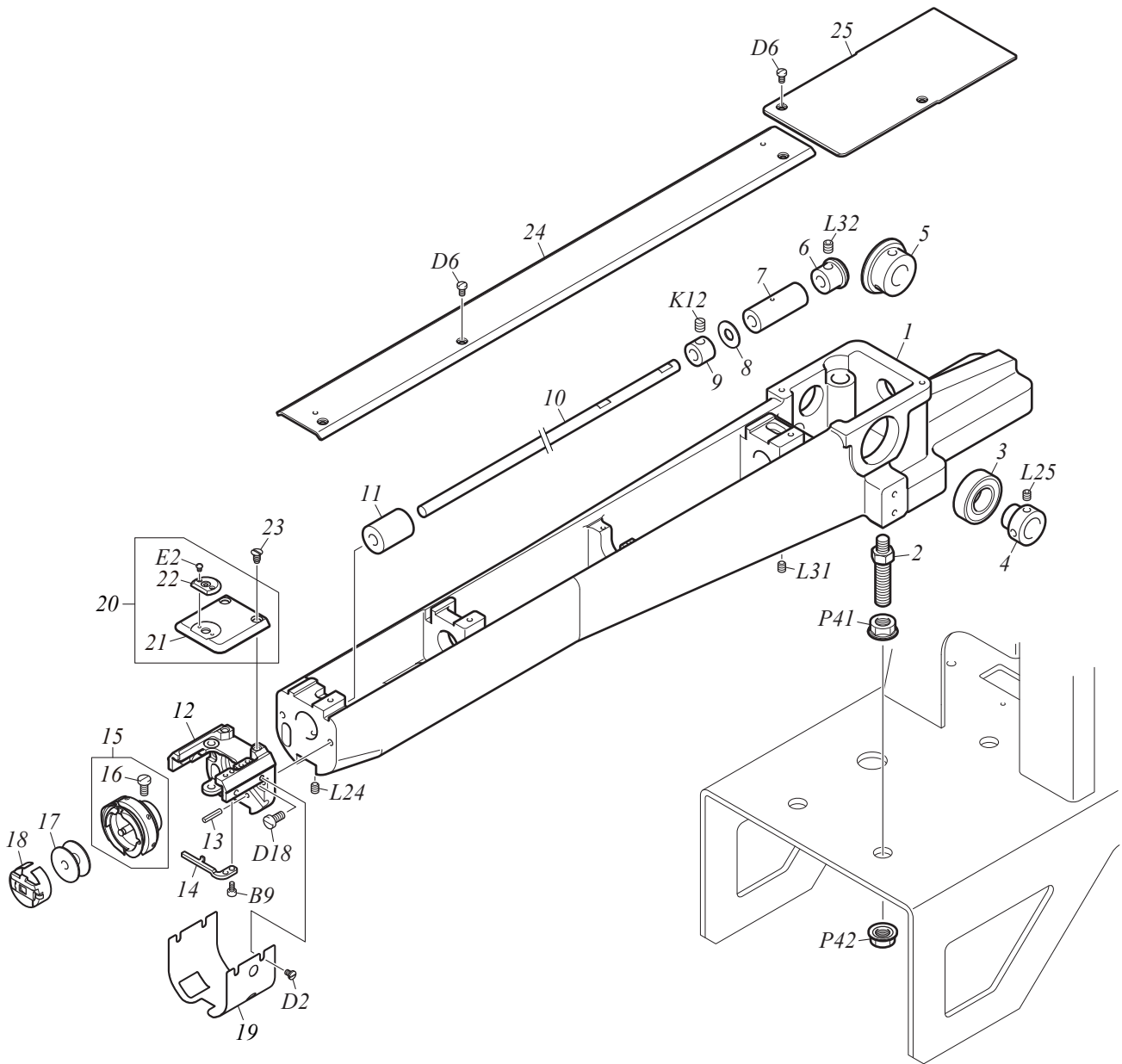
MW-2

No.	Part Name	Part No.	Remark
1	SERVO MOTOR :200W	0J6300800000	
2	TIMING PULLEY :MAIN SHAFT :W15-16[S]	501430150S00	
3	TIMING BELT :SPTG :W15-S5M2000/G	623200380000	
4	TIMING PULLEY :B :W15-40	50143303B000	
5	BEARING COLLAR :15MM DIA.	502715040010	
6	BEARING CASE :NO.2 :20MM DIA.[S]	508220060S00	
7	SCREW WITH ROLLER PIN :NO.3 :M8	514308050000	
8	FLAT PULLEY :40MM DIA.[S]	501901010S30	
9	E-RING :7MM DIA.	611100100000	
10	BASE :IDLER	040150010000	
11	SCREW WITH ROLLER PIN :NO.3 :M8	514308110000	
12	TIMING PULLEY :W15-30[S]	501237010S00	
13	R. H. BASE CONNECTING SHAFT :15P*141.5	QS4102020000	
14	BEARING COLLAR :15MM DIA.	502715080000	
15	ROTARY HOOK SHAFT CONNECTING BEARING CASE :B[S]	040170030S00	
16	BRACKET :ROTARY HOOK SHAFT CONNECTION	040170010000	
17	ROTATING DETECTING PLATE[S]	040360090S10	
18	CARD :PHOTO-INTERRUPTER	0J4204500000	
19	BRACKET :SENSOR	040360120010	
20	TIMING BELT :SPTG :W15-S3M0582/G	621300040000	
21	ROTARY HOOK SHAFT CONNECTING BEARING CASE :A[S]	040170020S00	
22	ROTARY HOOK SHAFT :15P*128	QS4102010000	
23	TIMING PULLEY :W15-40[S]	501433060S00	
24	MAIN SHAFT CONNECTING BEARING CASE[S]	040150020S00	
25	BEARING COLLAR :18MM DIA.	502718010010	
26	MAIN SHAFT :18P*160	QS4101010000	
27	HEAD R COVER	040170040000	
28			
29			
30			
31			
32			
33			
34			
35			
36			
37			
38			
39			
40			
41			
42			
43			
44			
45			
46			
47			
48			
49			
50			

Note: As for parts with mark @, please follow our instructions on Table of Contents in your parts order.

(XL03)

CYLINDER BED 1



CYLINDER BED 1

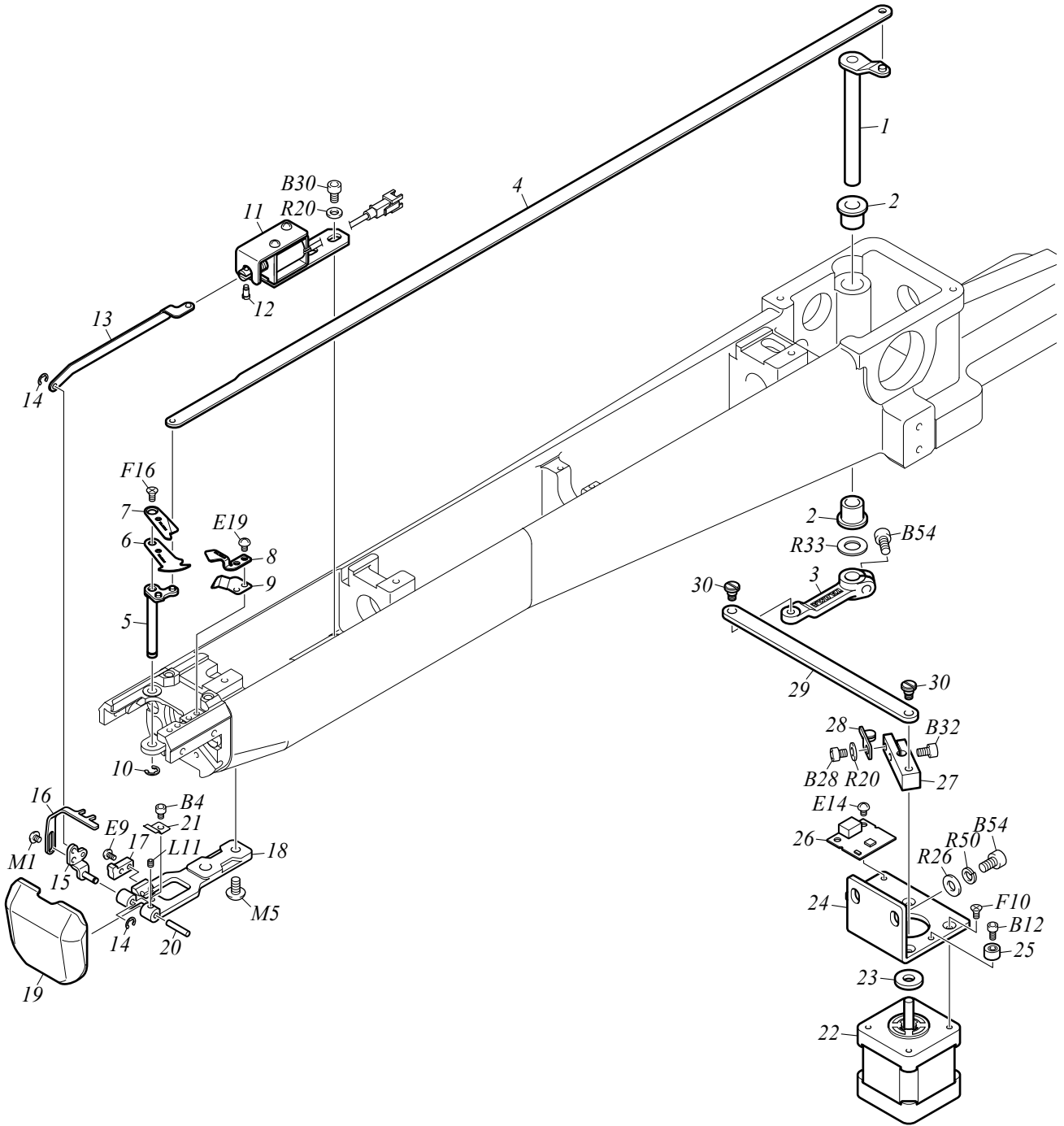
MW-3-1

No.	Part Name	Part No.	Remark
1	LONG CYLINDER BED :REGULAR ROTARY HOOK	050170010030	
2	ROTARY HOOK BASE STUD	050330330000	
3	BEARING :6003ZZ	630200080000	
4	BEARING COLLAR :15MM DIA.	502715080000	
5	SPIRAL BEVEL GEAR :NO.1 :28T	506528030000	
6	SPIRAL BEVEL GEAR :NO.1 :14T	506514030000	
7	OIL-BUSHING :NO.1 :7.94MM DIA.	509179090010	
8	PLAIN WASHER :7.94*19*T0.8	519108030000	
9	STOPPER COLLAR :7.94MM DIA.	502107020000	
10	SHAFT :ROTARY HOOK :7.94MM DIA.	050330550000	
11	OIL-BUSHING :NO.1 :7.94MM DIA.	509179010000	
12	NEEDLE PLATE BRACKET	050330580000	
13	SPRING PIN :3*12	611400080000	
14	ROTARY HOOK SUPPORT	050330600000	
15	ROTARY HOOK :KHS12-RYPTFS2OE	050230090020	
16	ROTARY HOOK SET SCREW :11/64*7.2	050290020000	
17	BOBBIN :REGULAR ROTARY HOOK	050260010020	
18	BOBBIN CASE :REGULAR ROTARY HOOK :STANDARD	050240150010	
19	COVER :NEEDLE PLATE BRACKET	050330590000	
20	NEEDLE PLATE :CAP/NORMAL/TUBULAR[A]	05034050@A10	
21	NEEDLE PLATE :COMMON USE	050340500000	
22	BOSS :COMMON USE NEEDLE PLATE	05034051@010	
23	ROUND COUNTERSUNK HEAD SCREW :11/64*8.4B	511554010000	
24	COVER :CYLINDER BED :FRONT	050330630000	
25	COVER :CYLINDER BED :REAR	050330570000	
26			
27			
28			
29			
30			
31			
32			
33			
34			
35			
36			
37			
38			
39			
40			
41			
42			
43			
44			
45			
46			
47			
48			
49			
50			

Note: As for parts with mark @, please follow our instructions on Table of Contents in your parts order.

(YK06)

CYLINDER BED 2



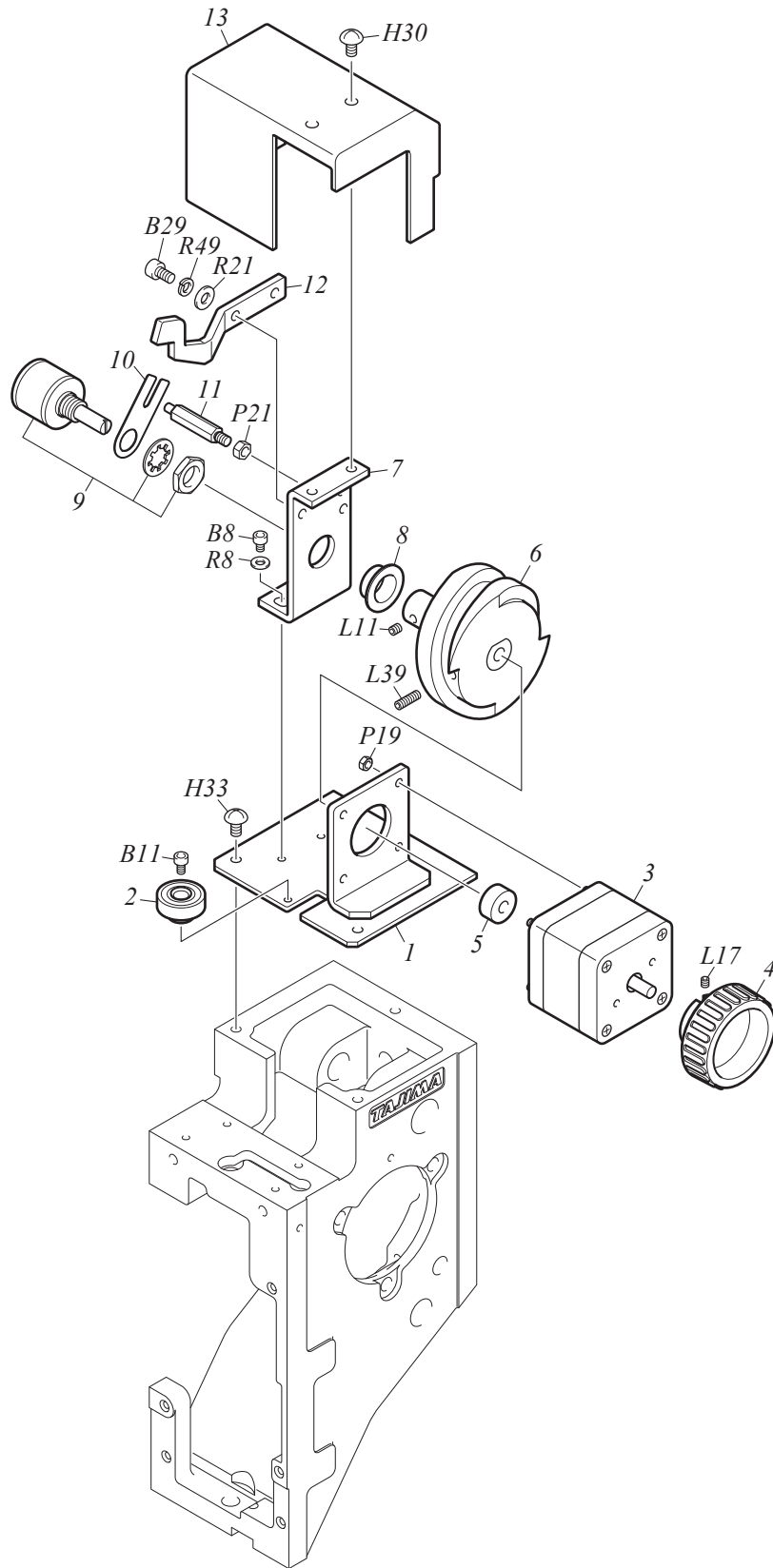
CYLINDER BED 2

MW-3-2

No.	Part Name	Part No.	Remark
1	LEVER SHAFT :KNIFE CONNECTING PLATE[S]	050320850S20	
2	OIL-BUSHING :NO.2 :8MM DIA.	509208020000	
3	LEVER :KNIFE CONNECTING PLATE SHAFT	050321000000	
4	CONNECTING PLATE :KNIFE	050321410000	
5	LEVER SHAFT :KNIFE[S]	050320040S30	
6	THREAD SEPARATING PLATE :DIRECT MOVEMENT 2-BLADE TYPE	050320930010	
7	MOVABLE KNIFE :DIRECT MOVEMENT 2-BLADE TYPE	050320920010	
8	FIXED KNIFE :DIRECT MOVEMENT 2-BLADE TYPE	050320940010	
9	UNDER THREAD PRESSER	050320740000	
10	E-RING :4MM DIA.	611100070000	
11	SOLENOID :OPEN FRAME[A]	0J6600100A10	
12	STEPPED SCREW :NO.1 :M2.5*6	512130010010	
13	CONNECTING PLATE :PICKER	050320570010	
14	E-RING :2MM DIA.	611100050000	
15	SHAFT :PICKER	050320750050	
16	PICKER	050320760020	
17	STOPPER :PICKER	050320700000	
18	HOLDER :PICKER SHAFT	050320840010	
19	ROTARY HOOK COVER[S]	050330610S00	
20	STRAIGHT PIN :NO.1 :3MM DIA.	503101100000	
21	PLATE SPRING :ROTARY HOOK COVER :T0.2	507802050000	
22	PULSE MOTOR :42MM SQUARE :DOUBLE-END	0J6106202000	
23	PLASTIC WASHER :6*15*T2.5	519206020000	
24	BASE :ATH MOTOR	050321020000	
25	DAMPER RING :3MM DIA. E	050320470010	
26	CARD :MAGNETIC SENSOR A	0J4204400000	
27	LEVER :ATH	050320100000	
28	SENSOR PLATE :NO.1	050320110000	
29	CONNECTING PLATE :ATH DRIVE ARM	050320430000	
30	STEPPED SCREW :NO.1 :M4*6.7	512104100040	
31			
32			
33			
34			
35			
36			
37			
38			
39			
40			
41			
42			
43			
44			
45			
46			
47			
48			
49			
50			

Note: As for parts with mark @, please follow our instructions on Table of Contents in your parts order.

(XL03)



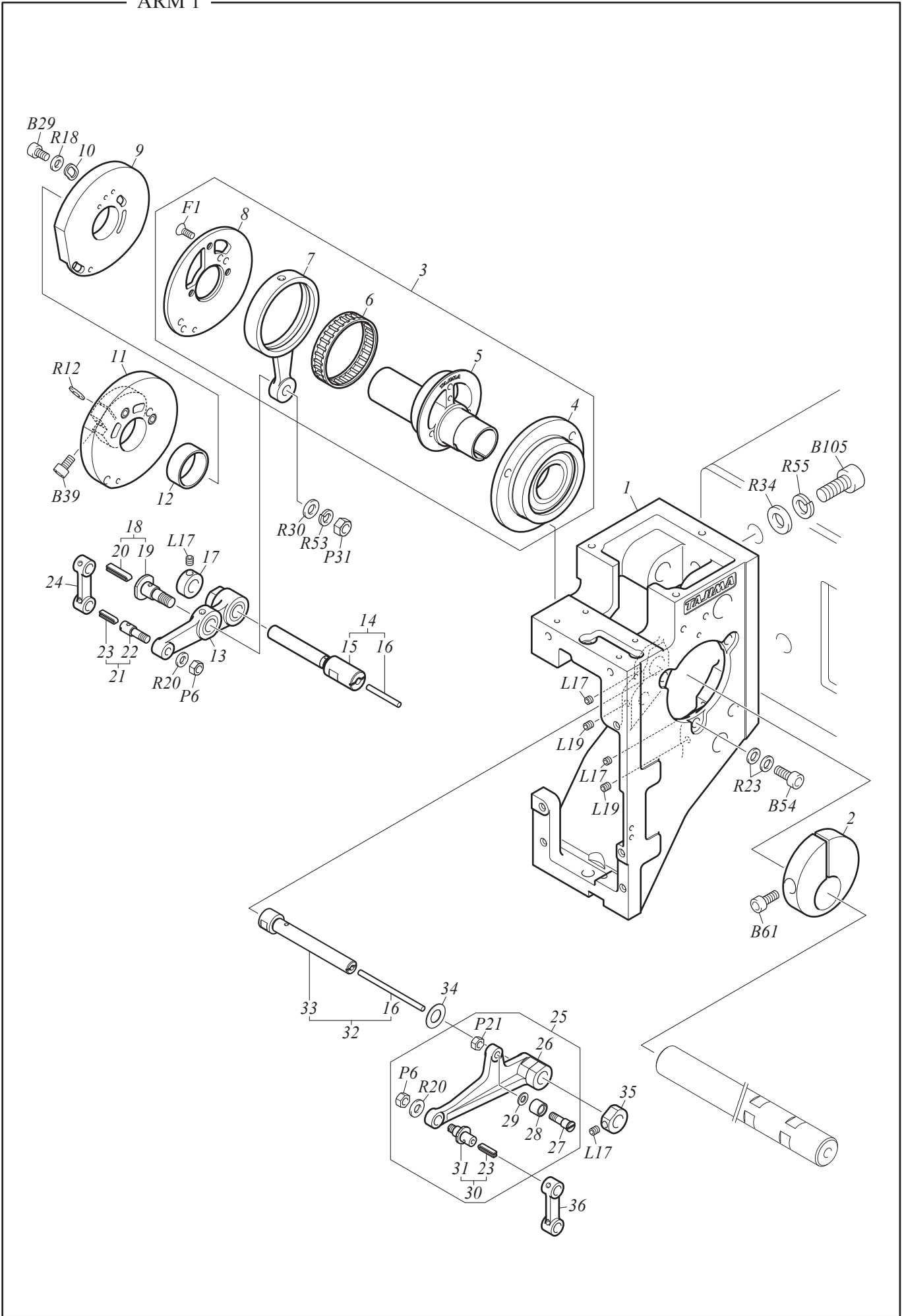
COLOR CHANGE SYSTEM

MW-4

No.	Part Name	Part No.	Remark
1	BASE :CHANGE MOTOR	070110340020	
2	ROLLER PIN[S]	080290040S10	
3	PULSE MOTOR :42MM SQUARE :DOUBLE-END[T]	0J6110700T10	
4	KNOB :B	08052001B010	
5	COLLAR :NO.1 :5.1MM DIA.	502551010010	
6	CAM :CHANGE[S]	070110480S00	
7	BEARING CASE :CHANGE CAM	070110370010	
8	OIL-BUSHING :NO.2 :MB0206-20FDU	638100240000	
9	POTENTIOMETER	640900010001	
10	BRACKET :POTENTIOMETER	0C0420020010	
11	STUD :NO.4 :M4-27.5	505404030020	
12	SENSOR ARM	0C0230210000	
13	COVER :CHANGE	070110050010	
14			
15			
16			
17			
18			
19			
20			
21			
22			
23			
24			
25			
26			
27			
28			
29			
30			
31			
32			
33			
34			
35			
36			
37			
38			
39			
40			
41			
42			
43			
44			
45			
46			
47			
48			
49			
50			

Note: As for parts with mark @, please follow our instructions on Table of Contents in your parts order.

(XL03)



ARM 1

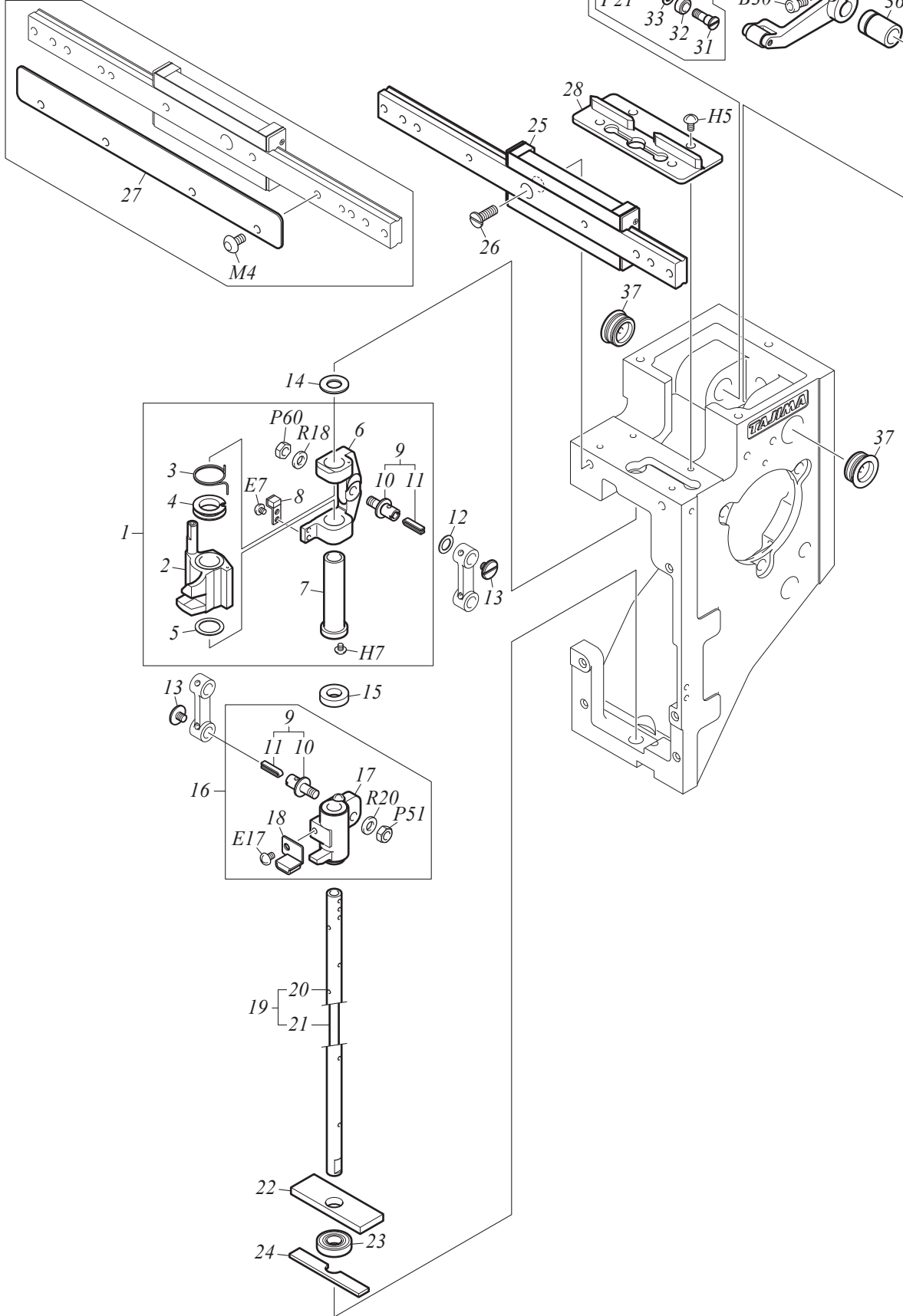
MW-5-1

No.	Part Name	Part No.	Remark
1	HEAD	080120070010	
2	TIGHTENING COLLAR :21MM DIA.	502221030000	
3	CAM :NEEDLE BAR[A]	080220010A00	
4	BEARING CASE :NO.2 :22MM DIA.[S]	508222010S00	
5	CAM :NEEDLE BAR	080220010000	
6	NEEDLE CAGE :KT404310NE01B2	634400070001	
7	CONNECTING ROD :51.7	080220040000	
8	BASE :TAKE-UP LEVER CAM	080220400000	
9	CAM :TAKE-UP LEVER :REGULAR ROTARY HOOK	080220060010	
9	CAM :TAKE-UP LEVER :JUMBO ROTARY HOOK	080220070010	
10	WASHER :CAM	080220180000	
11	CAM :PRESSER FOOT[A]	080220021A20	
12	COLLAR :NO.1 :21MM DIA.	502521010000	
13	LEVER :NEEDLE BAR[S]	080230050S10	
14	STEPPED PIN :NO.4[S]	503204070S10	
15	STEPPED PIN :NO.4	503204070010	
16	WICK :3P*61	080240230000	
17	STOPPER COLLAR :8MM DIA.	502108020010	
18	STEPPED SCREW :NO.2 :M6*13[S]	512206010S10	
19	STEPPED SCREW :NO.2 :M6*13	512206010010	
20	WICK :3.5*1*34	080240140000	
21	SCREW WITH PIN :NO.3 :11/64-7.7[A]	513354020A10	
22	SCREW WITH PIN :NO.3 :11/64-7.7	513354020010	
23	WICK :2.5*1*22	080240120010	
24	CONNECTING ROD	080230210000	
25	LEVER :DRIVE :PRESSER FOOT :45	U8K000000100	
26	LEVER :PRESSER FOOT[S]	080230140S50	
27	STEPPED SCREW :NO.1 :M4*5.3	512104160020	
28	ROLLER :5*8*5	515105020010	
29	PLAIN WASHER :4*7.5*T0.8	519104060000	
30	SCREW WITH ROLLER PIN :NO.4 :11/64E[S]	514454020S00	
31	SCREW WITH ROLLER PIN :NO.4 :11/64E	514454020000	
32	STEPPED PIN :NO.4[S]	503204030S00	
33	STEPPED PIN :NO.4	503204030020	
34	PLAIN WASHER :8*15*T0.5	519108050000	
35	STOPPER COLLAR :8MM DIA.	502108050010	
36	CONNECTING ROD :26	080230010000	
37			
38			
39			
40			
41			
42			
43			
44			
45			
46			
47			
48			
49			

Note: As for parts with mark @, please follow our instructions on Table of Contents in your parts order.

(XL03)

12, 15-Needle



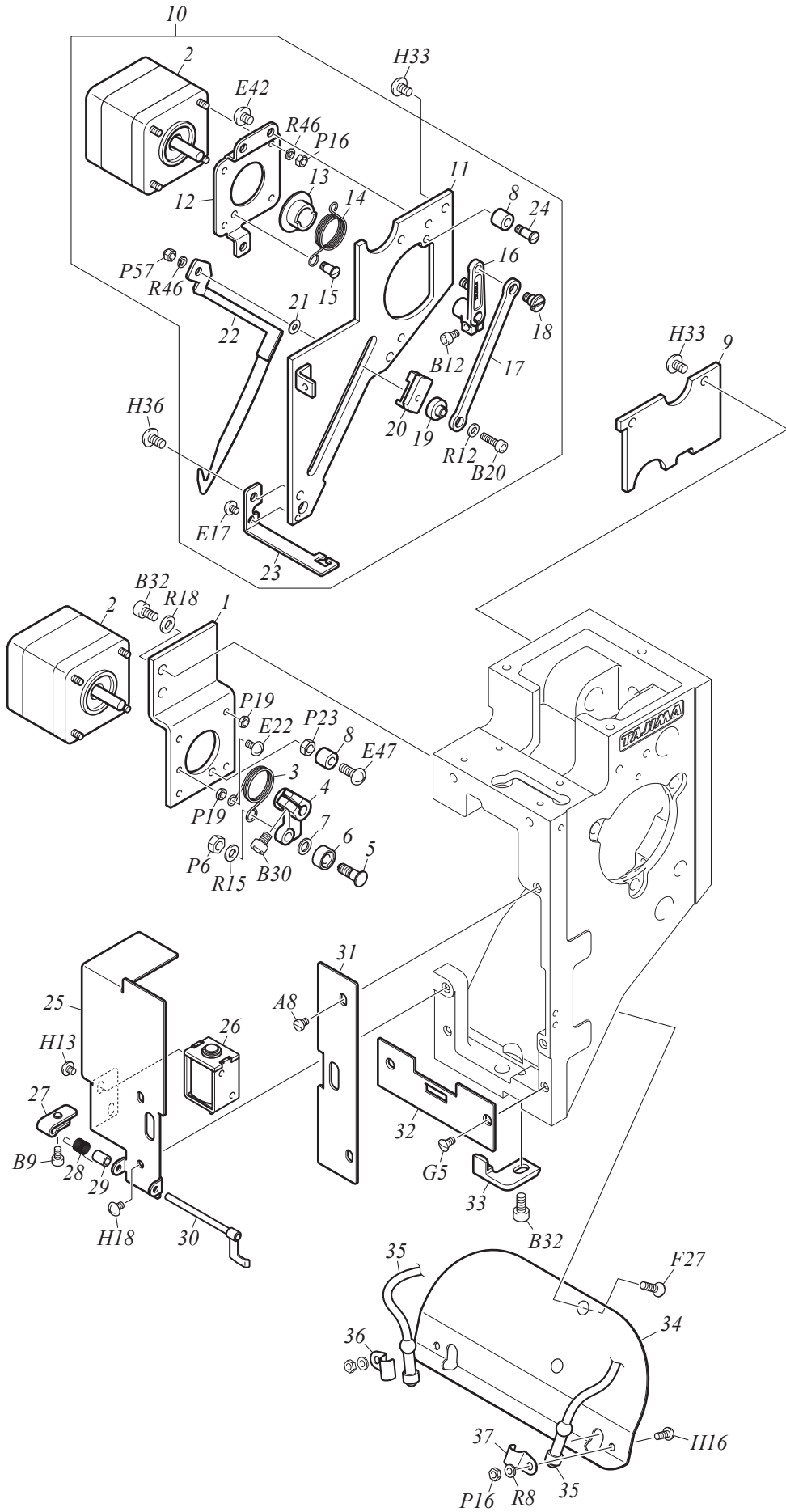
ARM 2

MW-5-2

No.	Part Name	Part No.	Remark
1	NEEDLE BAR RECIPROCATOR :GN[A]	080210360A70	
2	NEEDLE BAR RECIPROCATOR[S]	080210270S40	
3	TORSION SPRING :0.7MM DIA.	507307010010	
4	HOLDER :JUMP SPRING	080210110010	
5	PLAIN WASHER :10.3*14*T0.5	519112010000	
6	RECIPROCATING SLIDE BLOCK	080210410050	
7	PLASTIC BUSHING :NO.2 :7.24MM DIA.	509472050010	
8	DAMPER BRACKET :NEEDLE BAR RECIPROCATOR	080210090000	
9	SCREW WITH PIN :NO.3 :11/64-7.9[A]	513354060A20	
10	SCREW WITH PIN :NO.3 :11/64-7.9	513354060020	
11	WICK :2.5*1*22	080240120010	
12	PLAIN WASHER :6*9.5*T0.05-0.5	51910604@020	
13	FLAT FILLISTER HEAD SCREW :9/64*4	511153010010	
14	FELT :14MM DIA.	080240060000	t1
15	FELT :14MM DIA.	080240220000	t3
16	PRESSER FOOT RECIPROCATOR :47MM ST[A]	080210420A20	
17	PRESSER FOOT RECIPROCATOR :47MM ST[S]	080210420S10	
18	DAMPER BRACKET :PRESSER FOOT RECIPROCATOR[S]	080210180S20	
19	NEEDLE BAR DRIVE SHAFT :AUTOMATIC LUBRICATION[S]	0L0210030S10	
20	NEEDLE BAR DRIVE SHAFT :AUTOMATIC LUBRICATION	0L0210030000	
21	WICK :3.5P*158	080240020020	
22	FELT :NEEDLE BAR DRIVE SHAFT :B	080240070000	
23	GUIDE :NEEDLE BAR CASE[S]	080250170S20	
24	FELT :NEEDLE BAR DRIVE SHAFT :D	080240170000	
25	LINEAR WAY :NEEDLE BAR CASE	08025004@000	
26	COUNTERSUNK HEAD SCREW :11/64*40*13	511454010000	
27	REINFORCING PLATE	08025005@000	
28	TAKE-UP LEVER GUIDE	080280070010	
29	LEVER :TAKE-UP LEVER[S]	080230020S00	
30	LEVER :TAKE-UP LEVER	080230020000	
31	STEPPED SCREW :NO.1 :M4*12.2	512104180000	
32	ROLLER :4.7*7.94*4	515121050020	
33	PLAIN WASHER :4*7.5*T0.8	519104060000	
34	STRAIGHT PIN :NO.1 :8MM DIA.	503101130000	
35	ARM :TAKE-UP LEVER[S]	080230060S00	
36	BEARING BUSHING :NO.1 :8MM DIA.	509508080000	
37	LID :TAKE-UP LEVER SHAFT HOLDER :15.3MM DIA.	080290270000	
38			
39			
40			
41			
42			
43			
44			
45			
46			
47			
48			
49			
50			

Note: As for parts with mark @, please follow our instructions on Table of Contents in your parts order.

(YK05)



ARM 3

MW-5-3

No.	Part Name	Part No.	Remark
1	BRACKET :JUMP MOTOR	080320490000	
2	PULSE MOTOR :42MM SQUARE :DOUBLE-END[T]	0J6110700T10	
3	TORSION SPRING :0.9MM DIA.	507309040020	
4	LEVER :JUMP	080320420010	
5	STEPPED SCREW :NO.1 :11/64*14.7	512154010020	
6	ROLLER :4.7MM DIA.	515110010010	
7	WASHER :4.8*8*T0.8	S301040801KC	
8	DAMPER RING :4MM DIA.	080320410000	
9	SIDE COVER :HEAD :UPPER	080430010000	
10	UPPER THREAD HOLDER[A]	0B0110740A00	
11	SIDE COVER :HEAD :LOWER	080430220000	
12	BASE :HOOK MOTOR	0B0110420000	
13	COLLAR :SPRING GUIDE	502522010010	
14	TORSION SPRING :0.8MM DIA.	507308190010	
15	STEPPED SCREW :NO.1 :9/64*7.5	512153040000	
16	LEVER :HOOK	0B0110470000	
17	CONNECTING PLATE :HOOK	0B0110080010	
18	STEPPED SCREW :NO.1 :M4*6.7	512104100040	
19	SPACER :SLIDE HOOK	0B0110370010	
20	SLIDE :HOOK	0B0110510000	
21	WASHER :2.6*7*T0.5	519204010000	
22	HOOK[S]	0B0110650S10	
23	GUIDE :HOOK	0B0110520020	
24	STEPPED SCREW :NO.1 :9/64*10	512153020000	
25	HEAD FRONT COVER :L	08042002L020	
26	SOLENOID :OPEN FRAME	640600121001	
27	LEVER :SOLENOID	080270010010	
28	TORSION SPRING :0.5MM DIA.	507305020020	
29	COLLAR :NO.1 :3.1MM DIA.	502505010000	
30	LEVER :DRIVE[S]	080270040S20	
31	HEAD FRONT COVER :R	08042002R000	
32	GUIDE PLATE :NEEDLE BAR CASE	080250190020	
33	GUIDE BRACKET :NEEDLE BAR CASE	080250200000	
34	BRACKET :LED LAMP	0L2310020000	
35	LAMP :NEEDLE BASE LED LIGHT[A]	0J7101700A00	
36	CLAMP :LED LAMP :L	0L231003L000	
37	CLAMP :LED LAMP :R	0L231003R000	
38			
39			
40			
41			
42			
43			
44			
45			
46			
47			
48			
49			
50			

Note: As for parts with mark @, please follow our instructions on Table of Contents in your parts order.

(XL03)

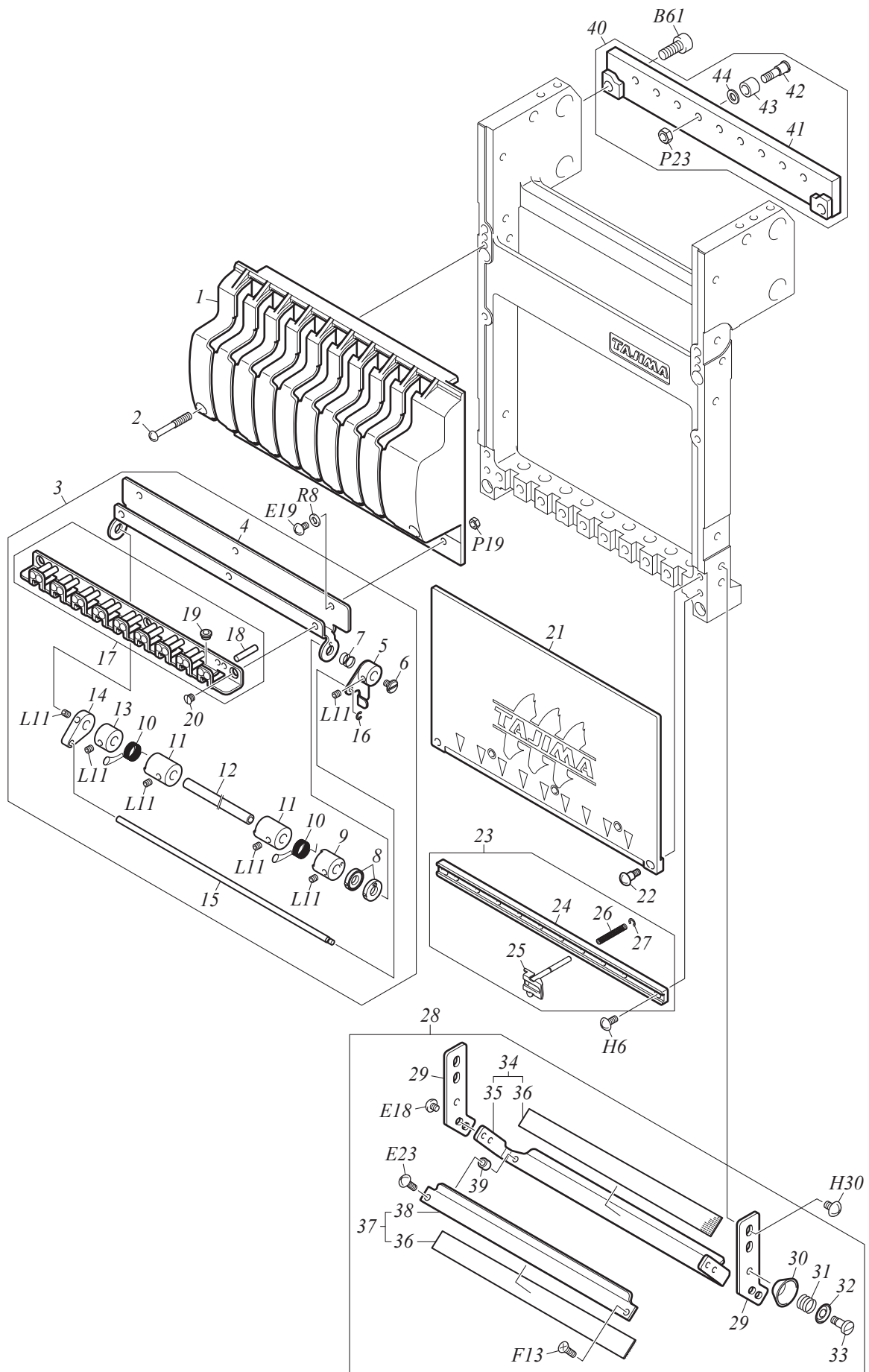
NEEDLE BAR CASE 1

MW-6-1

No.	Part Name	Part No.	Remark
1	NEEDLE BAR CASE	09012001@030	
2	NEEDLE BAR	090410020010	
3	COMPRESSION SPRING :0.5MM DIA.	507605030040	
4	FELT PACKING	090430040000	
5	DAMPER RING :F	090430020010	
6	STOPPER :UPPER DEAD POINT	090420090000	
7	FLAT FILLISTER HEAD SCREW :9/64*10.5	511153030000	
8	NEEDLE BAR CONNECTING STUD[A]	090420060A10	
9	COMPRESSION SPRING :0.9MM DIA.	507609060000	
10	PRESSER FOOT :A[A]	09046023AA00	2mm Dia.
10	PRESSER FOOT :A[A]	09046007AA00	3mm Dia. (Thick Thread)
11	PRESSER FOOT CONNECTING STUD	090420020020	
12	PRESSER FOOT[A]	090460230A00	2mm Dia.
12	PRESSER FOOT[A]	090460070A00	3mm Dia. (Thick Thread)
13	PRESSER FOOT	090460230000	2mm Dia.
13	PRESSER FOOT	090460070000	3mm Dia. (Thick Thread)
14	SPLIT COLLAR :PRESSER FOOT	090460040030	
15	FLAT FILLISTER HEAD SCREW :1/8*44	090470020010	
16	DAMPER RING :A	090430070040	
17	NEEDLE CLAMP[S]	090420010S70	
18	SLOTTED HEAD SET SCREW :11/64*6B	511754010010	
19	NEEDLE :DB-K5Z1 #11	616500080000	
20	NEEDLE BAR GUIDE	0904500@@010	
21	RAIL GUIDE	08027006@020	
22	RAIL :CASE :LOWER	09044005@000	
23	PARALLEL PIN :4*16-H7	611200050000	
24	SPLIT COLLAR :NO.1 :8MM DIA.	502308010010	
24	SPLIT COLLAR :NO.1 :8MM DIA.	502308020010	15-Needle
25	SPLIT COLLAR :NO.2 :8MM DIA.	502408020010	
25	SPLIT COLLAR :NO.2 :8MM DIA.	502408010020	15-Needle
26	GUIDE SHAFT :TAKE UP LEVER	09033001@000	
27	TAKE-UP LEVER[A]	090310050A40	
28	TAKE-UP LEVER[S]	090310050S40	
29	THREAD GUIDE COLLAR :2MM DIA.	516503020010	
30	BOSS :TAKE-UP LEVER	090310040010	
31	LEVER :STOPPER	090320010000	
32	TORSION SPRING :1MM DIA.	507310040010	
33	SPRING HOOK BAR	09033002@000	
34	STOPPER :LINEAR WAY :26	080260220000	
35	FLAT FILLISTER HEAD SCREW :M4*10	511104010010	
36			
37			
38			
39			
40			
41			
42			
43			
44			
45			

Note: As for parts with mark @, please follow our instructions on Table of Contents in your parts order.

(YK03)



NEEDLE BAR CASE 2

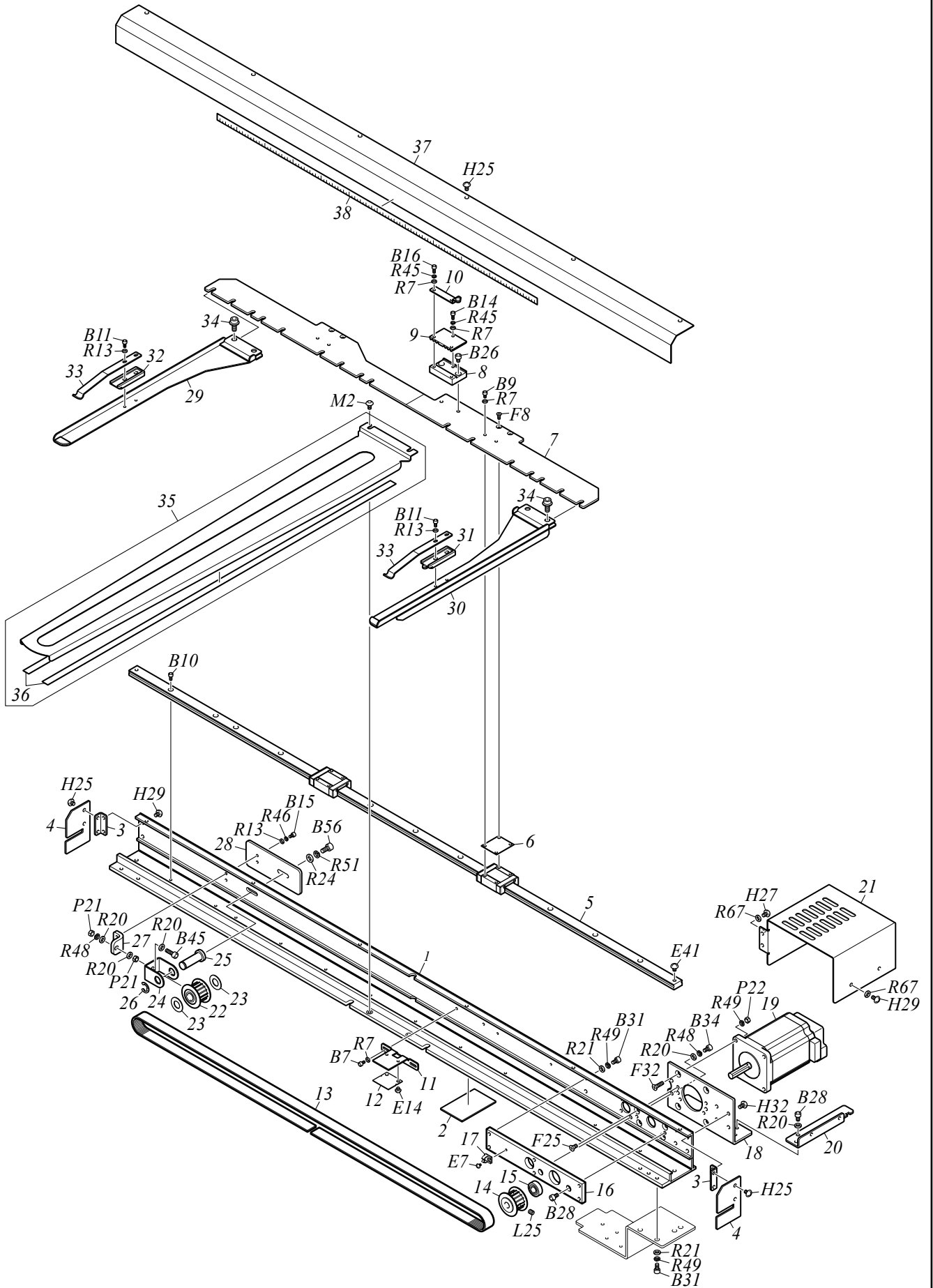
MW-6-2

No.	Part Name	Part No.	Remark
1	TAKE-UP LEVER COVER	09053002@000	
2	PAN HEAD SCREW :9/64*25	511353010000	
3	ROLLER-TYPE MIDDLE THREAD GUIDE[A]	09021025@A00	
4	BASE :ROLLER-TYPE MIDDLE THREAD GUIDE	09021025@000	
5	ADJUSTING LEVER[S]	090210140S10	
6	FLAT FILLISTER HEAD SCREW :M3*4.3	511103010000	
7	COMPRESSION SPRING :0.7MM DIA.	507607160000	
8	RATCHET	090210050020	
9	TENSION COLLAR :NO.1	090210160010	
10	THREAD TAKE-UP SPRING :NO.2 :0.4MM DIA.	507204010010	
11	TENSION COLLAR :NO.2	090210170010	
12	STRAIGHT PIN :5MM DIA.	09021023@000	
13	STOPPER COLLAR :5MM DIA.	090210180010	
14	HOLDER :STRAIGHT PIN	090210190010	
15	STRAIGHT PIN :3MM DIA.	09021022@000	
16	E-RING :2MM DIA.	611100050000	
17	ROLLER-TYPE MIDDLE THREAD GUIDE[S]	09021009@S30	
18	STRAIGHT PIN :NO.1 :3MM DIA.	503101150020	
19	THREAD GUIDE COLLAR :1.8MM DIA.	516503010010	
20	ROUND COUNTERSUNK HEAD SCREW :9/64*3.5	511553010010	
21	FACE COVER :NEEDLE BAR CASE	09051001@090	
22	STEPPED SCREW :NO.1 :9/64*8.8	512153150000	
23	UPPER THREAD LOCK[A]	08027005@A10	
24	BASE :UPPER THREAD LOCK	08027005@000	
25	LOCK SHAFT[S]	080270030S10	
26	COMPRESSION SPRING :0.3MM DIA.	507603040030	
27	E-RING :1.5MM DIA.	611100040000	
28	UPPER THREAD HOLDER[A]	0B020036@A00	
28	UPPER THREAD HOLDER :15-NEEDLE[A]	0B020033XA00	
29	BRACKET :UPPER THREAD HOLDER	0B0200010000	
30	THREAD SUSPENDER DISK	0B0200050000	
31	COMPRESSION SPRING :0.3MM DIA.	507603020010	
32	PRESSER :THREAD SUSPENDER SPRING	0B0200060000	
33	STEPPED SCREW :NO.1 :9/64*7.5	512153040000	
34	BASE :UPPER THREAD HOLDER[S]	0B020009@S00	
34	BASE :UPPER THREAD HOLDER :15-NEEDLE[S]	0B020034XS00	
35	BASE :UPPER THREAD HOLDER	0B020009@000	
35	BASE :UPPER THREAD HOLDER :15-NEEDLE	0B020034X000	
36	VELCRO	0B020007@000	
36	VELCRO :15-NEEDLE	0B020035X000	
37	UPPER THREAD HOLDER[S]	0B020036@S00	
37	UPPER THREAD HOLDER :15-NEEDLE[S]	0B020033XS00	
38	UPPER THREAD HOLDER	0B020036@000	
38	UPPER THREAD HOLDER :15-NEEDLE	0B020033X000	
39	COLLAR :NO.1 :3MM DIA.	502503070010	
40	BASE :CHANGE ROLLER :06-15-NEEDLE[A]	0701105@@A00	
41	BASE :CHANGE ROLLER :06-15-NEEDLE[S]	0701105@@S00	
42	STEPPED SCREW :NO.1 :M4*5.3	512104160020	
43	ROLLER :5*8*5	515105020010	
44	PLAIN WASHER :4*7.5*T0.8	519104060000	

Note: As for parts with mark @, please follow our instructions on Table of Contents in your parts order.

(XL03)

X-AXIS DRIVE SYSTEM



X-AXIS DRIVE SYSTEM

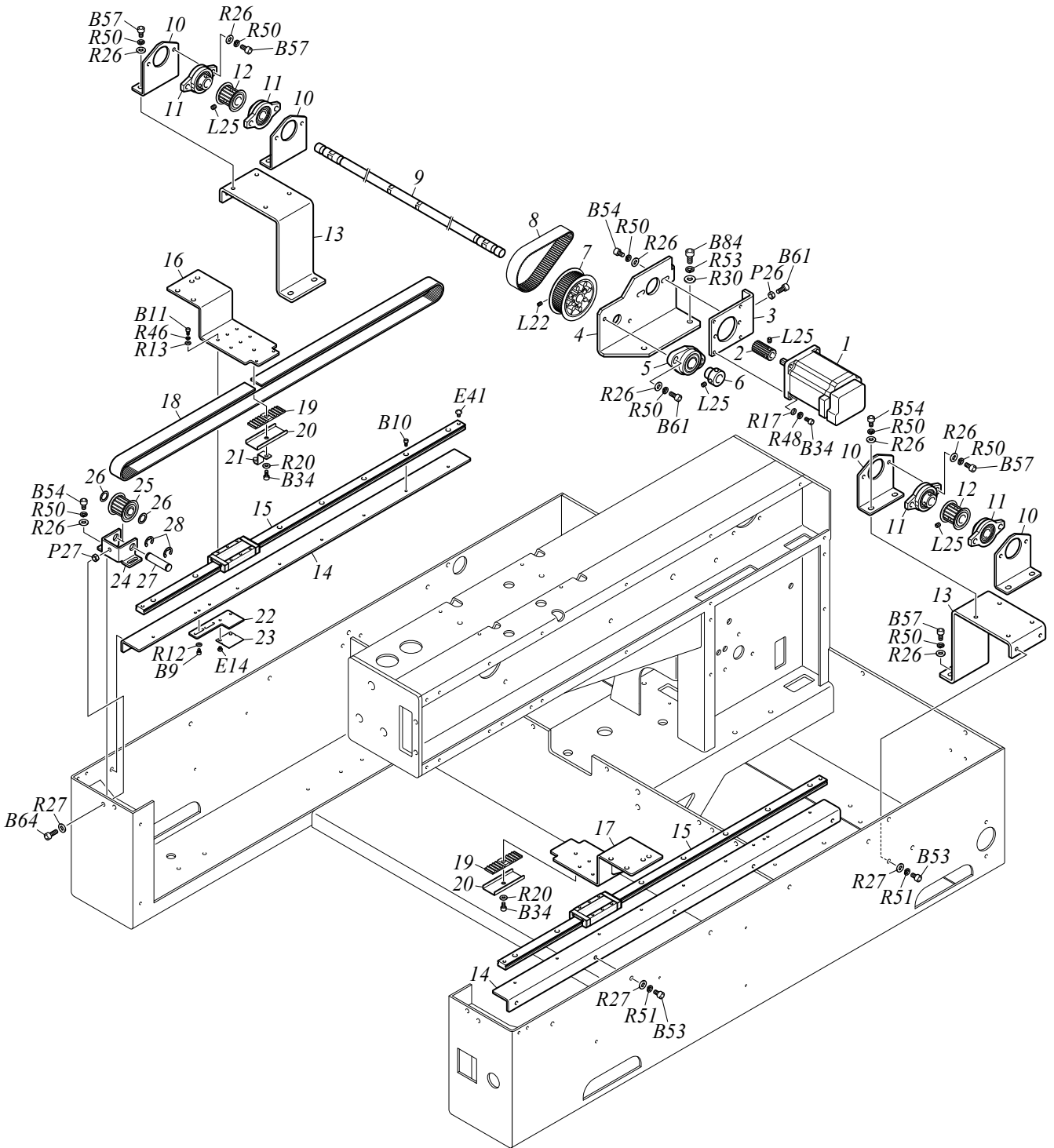
MW-7

No.	Part Name	Part No.	Remark
1	Z-SPEC. FRAME :0001/600S[S]	0F4110390S00	
2	FELT :T1.9[S]	0G0140040S00	
3	BRACKET :Z-SPEC. FRAME SASH COVER	0F5300350000	
4	COVER :Z-SPEC. FRAME SASH	0F5300360000	
5	LINEAR WAY :LWL-15C2R970	660300070000	
6	SPACER :NO.2 :T0.3	510200300000	
7	FRAME HOLDER :0001/600S[S]	0F4120210S10	
8	BELT CATCHER :NO.1 :X	0F4160480000	
9	BELT CATCHER :NO.2 :X	0F4160490000	
10	SENSOR PLATE :NO.1	0F4140030000	
11	BRACKET :MAGNETIC SENSOR	0F4140020000	
12	CARD :MAGNETIC SENSOR A	0J4204400000	
13	TIMING BELT :MA5 :W15-299E/LY	623A00020000	
14	TIMING PULLEY :W15-16	501430140020	
15	BEARING :698ZZ	631200190000	
16	BEARING CASE :NO.4 :8MM DIA.	0F5300330000	
17	MINI CLAMP :MB-2	644100080000	
18	BRACKET :X MOTOR	0F5300370000	
19	PULSE MOTOR :60MM SQUARE :WITH SENSOR[A]	0J6105400A10	
20	STAY :X MOTOR COVER	0F4150180000	
21	COVER :X MOTOR[S]	0F4150200S00	
22	TIMING PULLEY :W15-16[S]	501430060S10	
23	PLASTIC WASHER :10.2*15*T0.5	519212030000	
24	HOLDER :TIMING PULLEY	0F4160040000	
25	FLANGE PIN :NO.3	503503030000	
26	E-RING :7MM DIA.	611100100000	
27	TENSIONER :X DRIVE BELT	0F4160520000	
28	REINFORCING PLATE :Z-SPEC. FRAME	0F4160530000	
29	FRAME HOLDER :L[S]	0G314009LS30	
30	FRAME HOLDER :R[S]	0G314009RS30	
31	STOPPER :NO.1	0G314001A020	
32	STOPPER :NO.2	0G314002B020	
33	PLATE SPRING :HOLDER BASE :T1.5	507815060010	
34	HEXAGON SOCKET HEAD FLANGE SCREW :M5*10	S123051001MZ	
35	HOLDER :TUBULAR GOODS FRAME :EY550[S]	0F4160540S00	Tubular Goods Frame (610*625)
36	RESIN TAPE :W10*L620	520101050000	
37	COVER :Z-SPEC. FRAME :0001/600S	0F4110400000	
38	TRAVERSE SCALE	0P1200020000	
39			
40			
41			
42			
43			
44			
45			
46			
47			
48			
49			
50			

Note: As for parts with mark @, please follow our instructions on Table of Contents in your parts order.

(XL03)

Y-AXIS DRIVE SYSTEM



Y-AXIS DRIVE SYSTEM

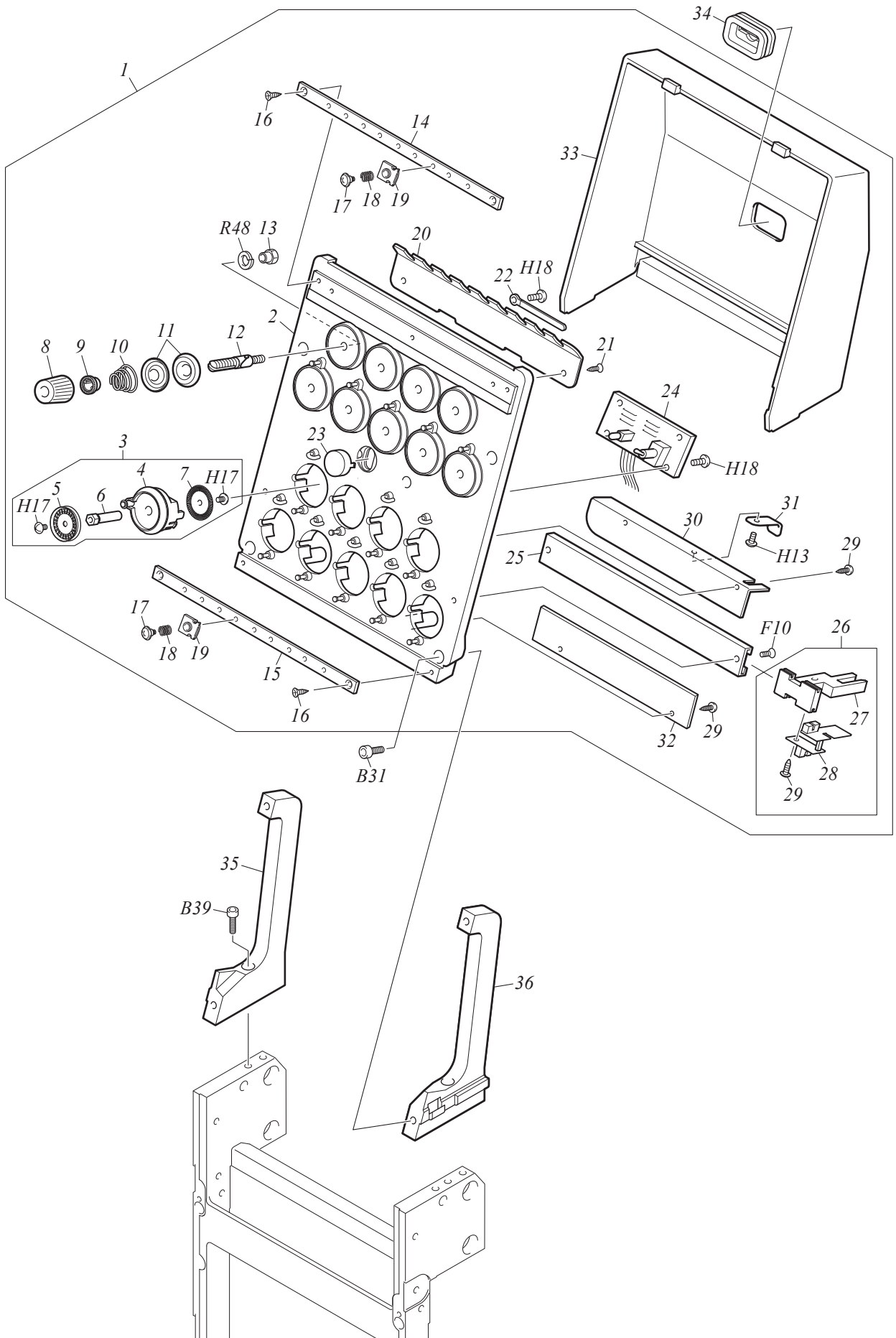
MW-8

No.	Part Name	Part No.	Remark
1	PULSE MOTOR :60MM SQUARE :WITH SENSOR[A]	0J6105400A10	
2	TIMING PULLEY :W19-18	501F18020000	
3	BASE :Y MOTOR	0F4240010000	
4	BRACKET :Y MOTOR	0F4240060000	
5	BEARING CASE :NO.3 :15MM DIA.[S]	508315030S00	
6	BEARING COLLAR :12MM DIA.	502712020000	
7	TIMING PULLEY :W20-63	501F17010000	
8	TIMING BELT :3GT :19*270/E	628300010001	
9	Y SHAFT :12P*770	QS4103010000	
10	BASE :BEARING UNIT	0F4230480000	
11	BEARING UNIT :UFL001	636100090000	
12	TIMING PULLEY :W20-16[S]	501440080S00	
13	BRACKET :BEARING UNIT	0F4230530000	
14	BASE :LINEAR WAY	0F4230540000	
15	LINEAR WAY :L650	660400020001	
16	Z-SPEC. FRAME ARM :L	0F423056L000	
17	Z-SPEC. FRAME ARM :R	0F423056R000	
18	TIMING BELT :MA5 :W20-0294E/LY	623F00010000	
19	BELT CATCHER :NO.2	0F4230430000	
20	REINFORCING PLATE :BELT CATCHER	0F4230550000	
21	SENSOR PLATE :NO.1[S]	0F4230450S00	
22	BRACKET :ORIGIN SENSOR	0F4230250010	
23	CARD :MAGNETIC SENSOR A	0J4204400000	
24	HOLDER :TENSION PULLEY	0F4210050000	
25	TIMING PULLEY :W20-16[S]	501440070S00	
26	PLASTIC WASHER :10.2*15*T0.5	519212030000	
27	STRAIGHT PIN :NO.4 :10MM DIA.	503104270000	
28	E-RING :7MM DIA.	611100100000	
29			
30			
31			
32			
33			
34			
35			
36			
37			
38			
39			
40			
41			
42			
43			
44			
45			
46			
47			
48			
49			
50			

Note: As for parts with mark @, please follow our instructions on Table of Contents in your parts order.

(XL03)

TENSION BASE



TENSION BASE

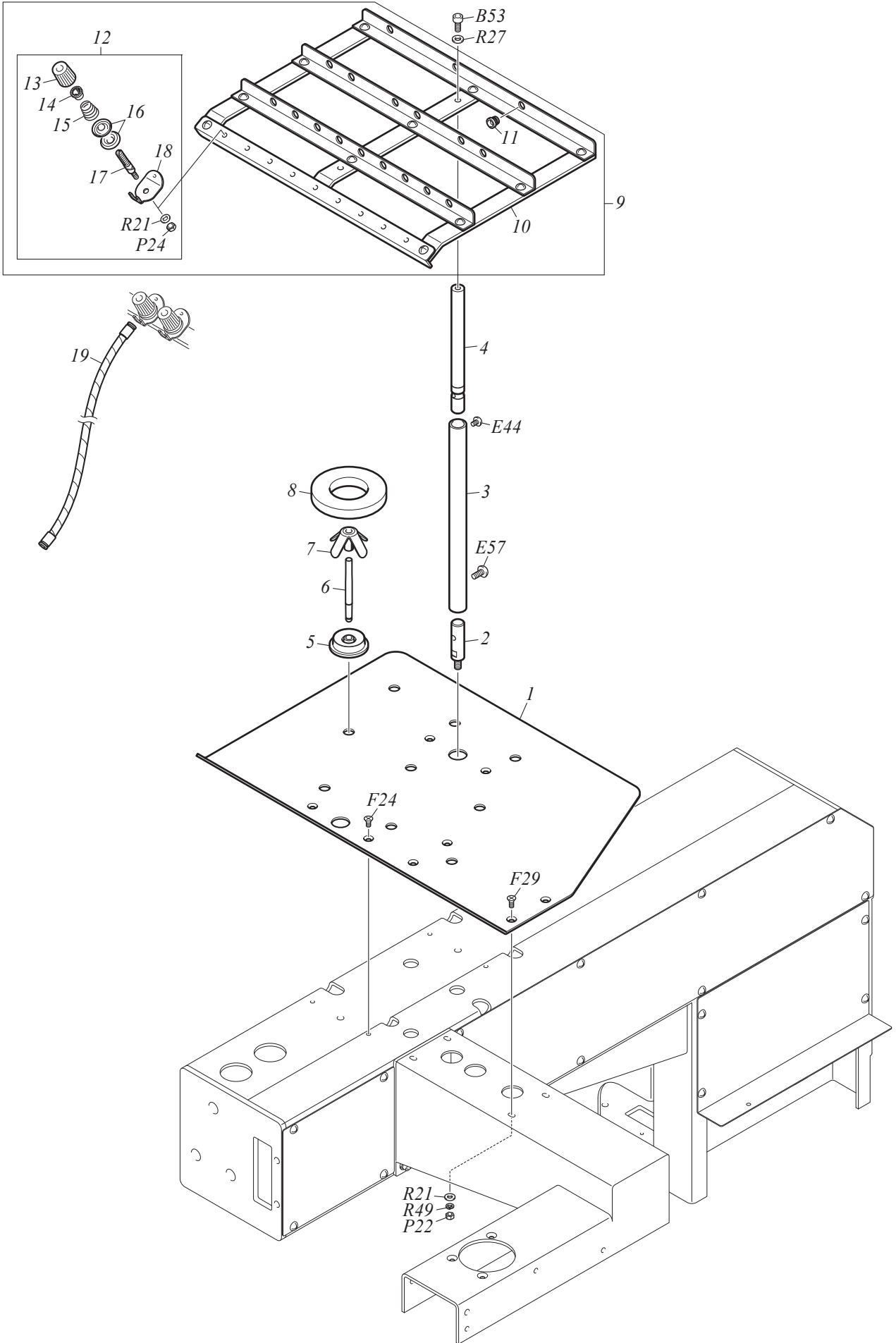
MW-9

No.	Part Name	Part No.	Remark
1	TENSION BASE :ROTARY :TEMX SINGLE HEAD	UC2F@0000020	
2	TENSION BASE :ROTARY[S]	0C012002@S60	
3	ROTARY TENSION DISK[A]	0C0230190A00	
4	BASE :ROTARY TENSION DISK[S]	0C0230190S20	
5	ROTARY TENSION DISK	0C0230120010	
6	SHAFT :ROTARY TENSION DISK	0C0230130030	
7	SLIT PLATE :ROTARY DISK :50	0J4203800000	
8	KNOB :THREAD TENSION :A	0C0220150000	
9	SPRING HOOK	0C0220080000	
10	TAPER SPRING :0.6MM DIA.	507706010000	
11	TENSION DISK	0C0210060000	
12	THREAD TENSION STUD :WITH GROOVE	0C0210040000	
13	SCREW BUSHING :NO.2 :M4	509804050000	
14	BASE :THREAD PRESSER :U :09-NEEDLE	0C0220339000	
14	BASE :THREAD PRESSER :U :12-NEEDLE	0C022035Y000	
14	BASE :THREAD PRESSER :U :15-NEEDLE	0C022037X000	
15	BASE :THREAD PRESSER :D :09-NEEDLE	0C0220349000	
15	BASE :THREAD PRESSER :D :12-NEEDLE	0C022036Y000	
15	BASE :THREAD PRESSER :D :15-NEEDLE	0C022038X000	
16	COUNTERSUNK TAPPING SCREW :3P*10	S550031001SD	
17	TRUSS HEAD SCREW :STEPPED :M3*4*2	S132030401TD	
18	COMPRESSION SPRING :0.2MM DIA.	507602010000	
19	THREAD PRESSER	0C0220400000	
20	UPPER THREAD GUIDE :TENSION BASE	0C022001@010	
21	COUNTERSUNK TAPPING SCREW :3P*8	S550030801SD	
22	COATED CLIP :5	644500150000	
23	LAMP COVER :TENSION BASE	0C0250050000	
24	CARD :TENSION BASE	0J2601900030	
25	RAIL :THREAD BREAKAGE SENSOR	0C023014@000	
26	TC SENSOR[A]	0J2602300A20	
27	BRACKET :TC SENSOR CARD	0C0230220010	
28	CARD :TC SENSOR	0J2602100010	
29	TRUSS HEAD TAPPING SCREW :3P*6	S530030601SD	
30	DISK GUARD :A	0C023020@010	
31	PLATE SPRING :T0.3	507803050000	
32	DISK GUARD :B	0C023016@000	
33	COVER :TENSION BASE	0C015002@000	
34	GROMMET	0C0250090010	
35	BRACKET :TENSION BASE :L[S]	0C024003LS00	
36	BRACKET :TENSION BASE :R[S]	0C024003RS00	
37			
38			
39			
40			
41			
42			
43			
44			
45			
46			

Note: As for parts with mark @, please follow our instructions on Table of Contents in your parts order.

(XL03)

THREAD STAND



THREAD STAND

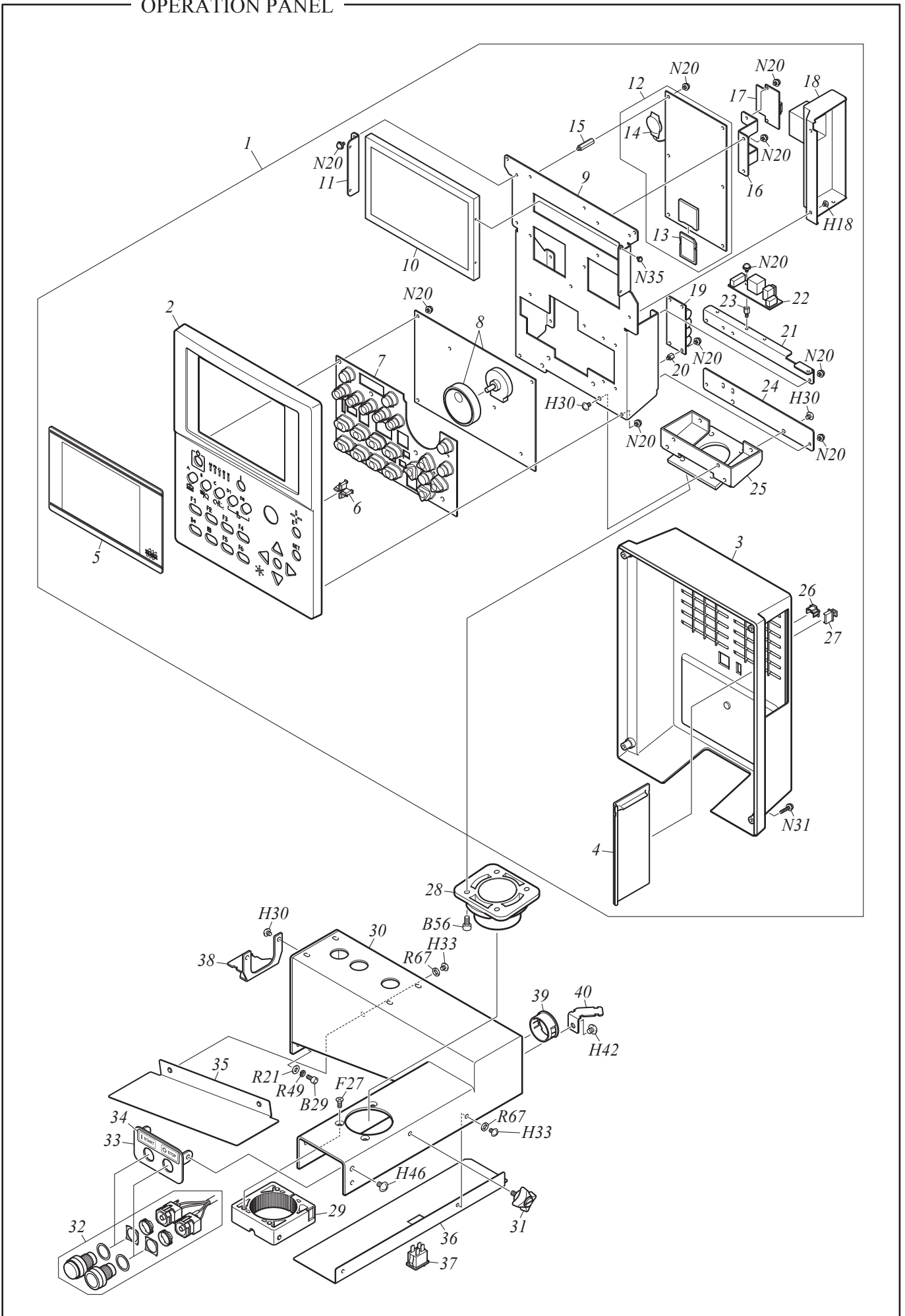
MW-10

No.	Part Name	Part No.	Remark
1	THREAD STAND PLATE	1DK10001@020	9, 12-Needle
1	THREAD STAND PLATE :15-NEEDLE	1DC15001X020	
2	SUPPORT BOLT	0D0110510000	
3	THREAD COURSE SUPPORT BAR :A	0D0210440000	
4	THREAD COURSE SUPPORT BAR :B	0D0210450000	
5	BASE :THREAD STAND STUD	0D0110420000	
6	THREAD STAND STUD	0D0110410000	
7	THREAD STAND BLADE	0D0110010010	
8	THREAD STAND RING :T10	0D0110022010	
9	THREAD COURSE[A]	1ED10001@A10	
10	THREAD COURSE	1ED10001@000	
11	THREAD GUIDE COLLAR :BLACK :4.5MM DIA.	516501012010	
11	THREAD GUIDE COLLAR :RED :4.5MM DIA.	516501011010	
12	THREAD TENSION :TUBE :B	UD1100000200	
13	KNOB :THREAD TENSION :A	0C0220150000	
14	SPRING HOOK	0C0220080000	
15	TAPER SPRING :0.6MM DIA.	507706010000	
16	TENSION DISK	0C0220160010	
17	THREAD TENSION STUD :WITH GROOVE	0C0210040000	
18	THREAD TENSION GUIDE :TUBE	0D0210150030	
19	SPIRAL TUBE[A]	0D021005@A00	
20			
21			
22			
23			
24			
25			
26			
27			
28			
29			
30			
31			
32			
33			
34			
35			
36			
37			
38			
39			
40			
41			
42			
43			
44			
45			
46			
47			
48			

Note: As for parts with mark @, please follow our instructions on Table of Contents in your parts order.

(XL03)

OPERATION PANEL



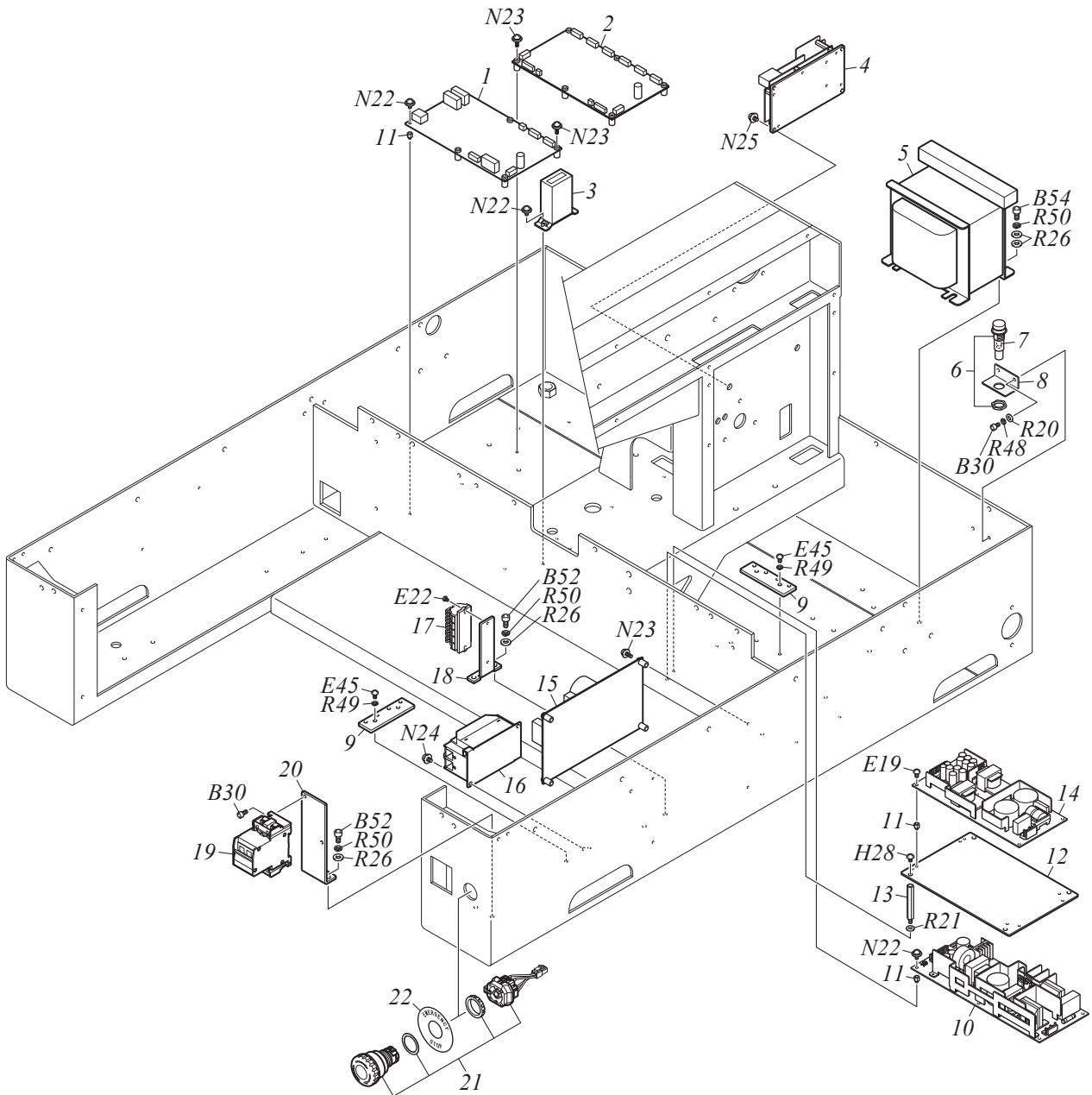
OPERATION PANEL

MW-11

No.	Part Name	Part No.	Remark
1	CONTROLLER :X21[A]	0J0205100A00	
2	OPERATION PANEL :FRONT[S]	0J1404200S20	
3	OPERATION PANEL :REAR	0J1404300010	
4	SHUTTER :FDD	0J1404400010	
5	COVER :LCD PANEL	0J1414900000	
6	COVER :LAMP	0J1404700000	
7	OPERATION BUTTON	0J1404500000	
8	CARD :SWITCH :4	0J3505400000	
9	BASE :PANEL CARD	0J1415300000	
10	LCD :7 INCH WIDE	641200250000	
11	BRACKET :LCD	0J1415100000	
12	CARD :CPU :X21[A]	0J2306600A00	
13	SD CARD :X21	0J2403100000	
14	LITHIUM BATTERY :XC[A]	645300490A01	
15	SPACER :HEXAGON :L20 :M3 :UNDER HEAD 3MM	644501750000	
16	BRACKET :USB CONNECTOR CARD	0J1415400000	
17	CARD :USB CONNECTOR	0J3200800000	
18	COVER :USB	0J1408500000	
19	CARD :CAPACITOR	0J3502600010	
20	SPACER :HEXAGON	644500880000	
21	SUPPORT :CARD BASE	0J1406500020	
22	CARD :I/F CONNECTOR	0J3200700010	
23	SPACER :HEXAGON	644500300000	
24	SUPPORT :PANEL BASE	0J1406600020	
25	BASE :OPERATION PANEL[S]	0J1405000S00	
26	DUST CAP :LAN	644501460000	
27	DUST CAP :USB	644500490000	
28	HOLDER :OPERATION PANEL	030221040000	
29	CLAMP :CONTROLLER HOLDER[S]	030220870S00	
30	BASE :OPERATION PANEL	030210460000	
31	KNOBBED SCREW :NO.2 :M5*9[S]	511F05120S00	
32	SWITCH :CYLINDER HEAD[A]	0J0603300A30	
33	BASE :START SWITCH/STOP SWITCH[S]	030230190S10	
34	IO LABEL :START/STOP	0P0600030000	
35	COVER :BASE :A	030210470000	
36	COVER :BASE :B	030210480010	
37	SWITCH :SEESAW	642300300000	
38	GUIDE :HARNESS	030750030000	
39	BUSHING :HARNESS	0J1501100020	
40	STAY :WIRING	030140040000	
41			
42			
43			
44			
45			
46			
47			
48			
49			
50			

Note: As for parts with mark @, please follow our instructions on Table of Contents in your parts order.

(YK05)



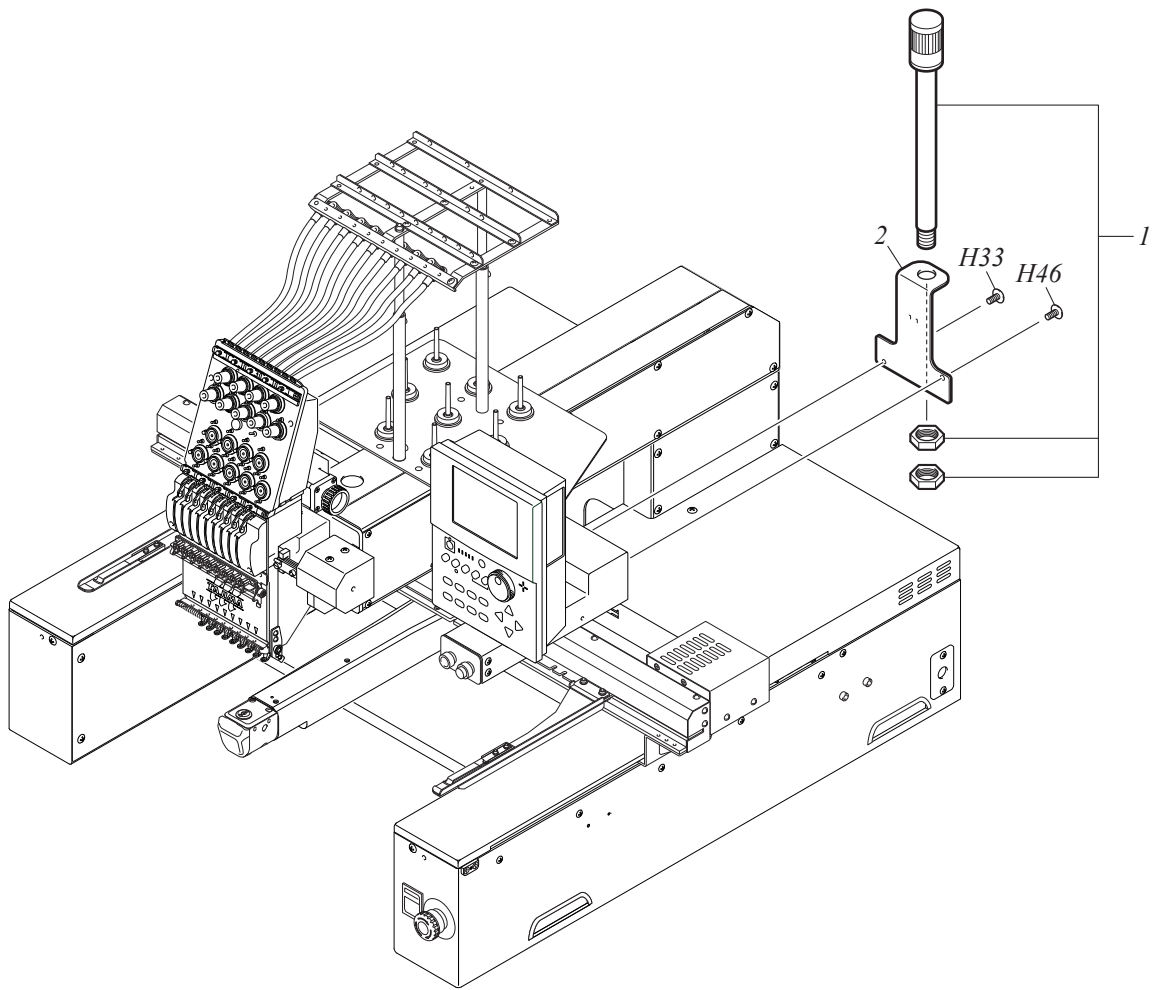
ELECTRICAL PARTS

MW-12

No.	Part Name	Part No.	Remark
1	CARD :MACHINE	0J2502301090	
2	CARD :HEAD	0J27023010B0	
3	COUNTER :ELECTRO-MAGNETIC	0J4500200010	
4	MAIN SHAFT DRIVER :X13-A :200[A]	0J0303300A10	
5	TRANSFORMER :X12	643100140011	
6	FUSE HOLDER	645400050000	
7	FUSE :250V 10A	642700230000	
8	HOLDER :FUSE	0L2240100000	
9	PLATE :GROUNDING	030190430000	
10	DC POWER SUPPLY :24V	645300191011	
11	SPACER :HEXAGON	644500880000	
12	BASE :CARD	030190400000	
13	SPACER :HEXAGON :BSF-448E	644501410000	
14	DC POWER SUPPLY :5V +/-12V	645300030000	
15	CARD :POWER SUPPLY :SINGLE HEAD	0J2101602030	
16	NOISE FILTER :SINGLE-PHASE	641400140000	
17	TERMINAL BASE :5P	643400050000	
18	HOLDER :TERMINAL BASE	030190410000	
19	CIRCUIT PROTECTOR :SINGLE PHASE 10A	646100100010	
20	BRACKET :BREAKER	030130220000	
21	SWITCH :EMERGENCY STOP[A]	0J0603000A10	
22	NAME PLATE :EMERGENCY STOP SWITCH	0J5108800000	
23			
24			
25			
26			
27			
28			
29			
30			
31			
32			
33			
34			
35			
36			
37			
38			
39			
40			
41			
42			
43			
44			
45			
46			
47			
48			
49			
50			

Note: As for parts with mark @, please follow our instructions on Table of Contents in your parts order.

(XL03)



SIGNAL TOWER (OPTION)

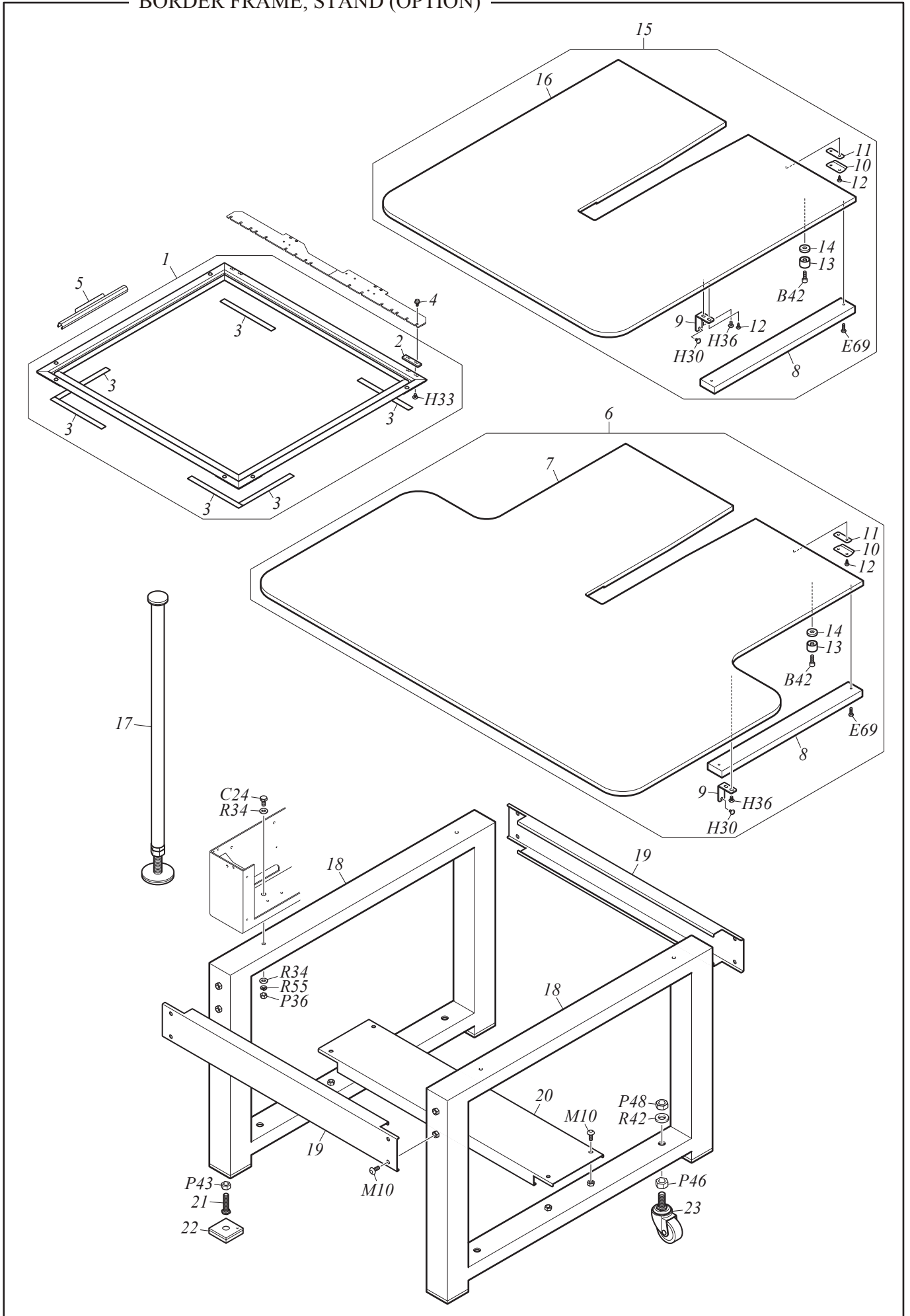
MW-13

No.	Part Name	Part No.	Remark
1	LAMP :SIGNAL TOWER :LED ROTATING LIGHT	0J710200000	
2	BRACKET :SIGNAL TOWER	0L319006000	
3			
4			
5			
6			
7			
8			
9			
10			
11			
12			
13			
14			
15			
16			
17			
18			
19			
20			
21			
22			
23			
24			
25			
26			
27			
28			
29			
30			
31			
32			
33			
34			
35			
36			
37			
38			
39			
40			
41			
42			
43			
44			
45			
46			
47			
48			
49			
50			

Note: As for parts with mark @, please follow our instructions on Table of Contents in your parts order.

(XL03)

BORDER FRAME, STAND (OPTION)



BORDER FRAME, STAND (OPTION)

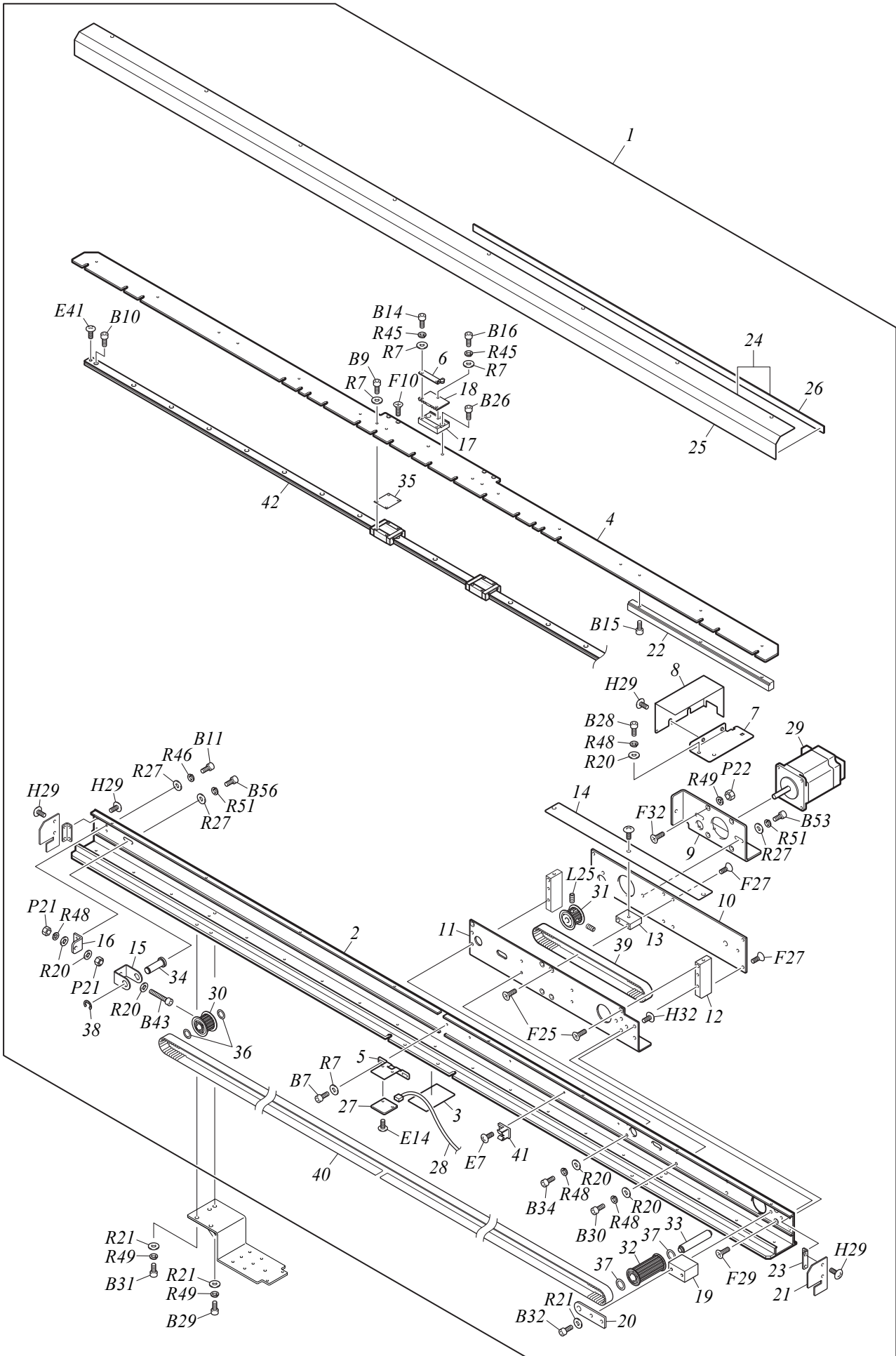
MW-14

No.	Part Name	Part No.	Remark
1	BORDER FRAME :0001/055*600S[A]	30F160010A10	
2	SPACER :BORDER FRAME	0G0250150010	
3	FELT :15*2*180[S]	0G0240310S00	
4	HEXAGON SOCKET HEAD FLANGE SCREW :M5*8	S123050801MZ	
5	BORDER FRAME CLIP :BFF8 :L100-300[S]	0G052021@S00	
6	TABLE :BORDER FRAME[A]	0L3120070A10	
7	TABLE :BORDER FRAME	0L3120070010	
8	STAY :TABLE	030610220010	
9	BRACKET :TABLE	030610230000	
10	TABLE HOLDER :A	030610110000	
11	SPACER :TABLE HOLDER	030610240000	
12	TRUSS HEAD TAPPING SCREW :4P*10	S530041001SD	
13	COLLAR :TABLE	030610130000	
14	SPACER :TABLE COLLAR	030610250000	
15	TABLE[A]	0L3120080A10	Tubular Goods Frame
16	TABLE	0L3120080010	Tubular Goods Frame
17	TABLE SUPPORT[A]	03054015@A10	
18	BASE :STAND	0L311011@000	
19	JOINT :STAND BASE	0L311012@000	
20	JOINT :STAND BASE :B	0L311013@000	
21	LEVELING BOLT :M12*50	030530040000	
22	VIBRATION-PREVENTIVE BASE[S]	03052004@S00	
23	CASTER :ST-65RH M16*40	614300210000	
24			
25			
26			
27			
28			
29			
30			
31			
32			
33			
34			
35			
36			
37			
38			
39			
40			
41			
42			
43			
44			
45			
46			
47			
48			
49			
50			

Note: As for parts with mark @, please follow our instructions on Table of Contents in your parts order.

(XL03)

X-EXTENSION UNIT 1 (OPTION)



X-EXTENSION UNIT 1 (OPTION)

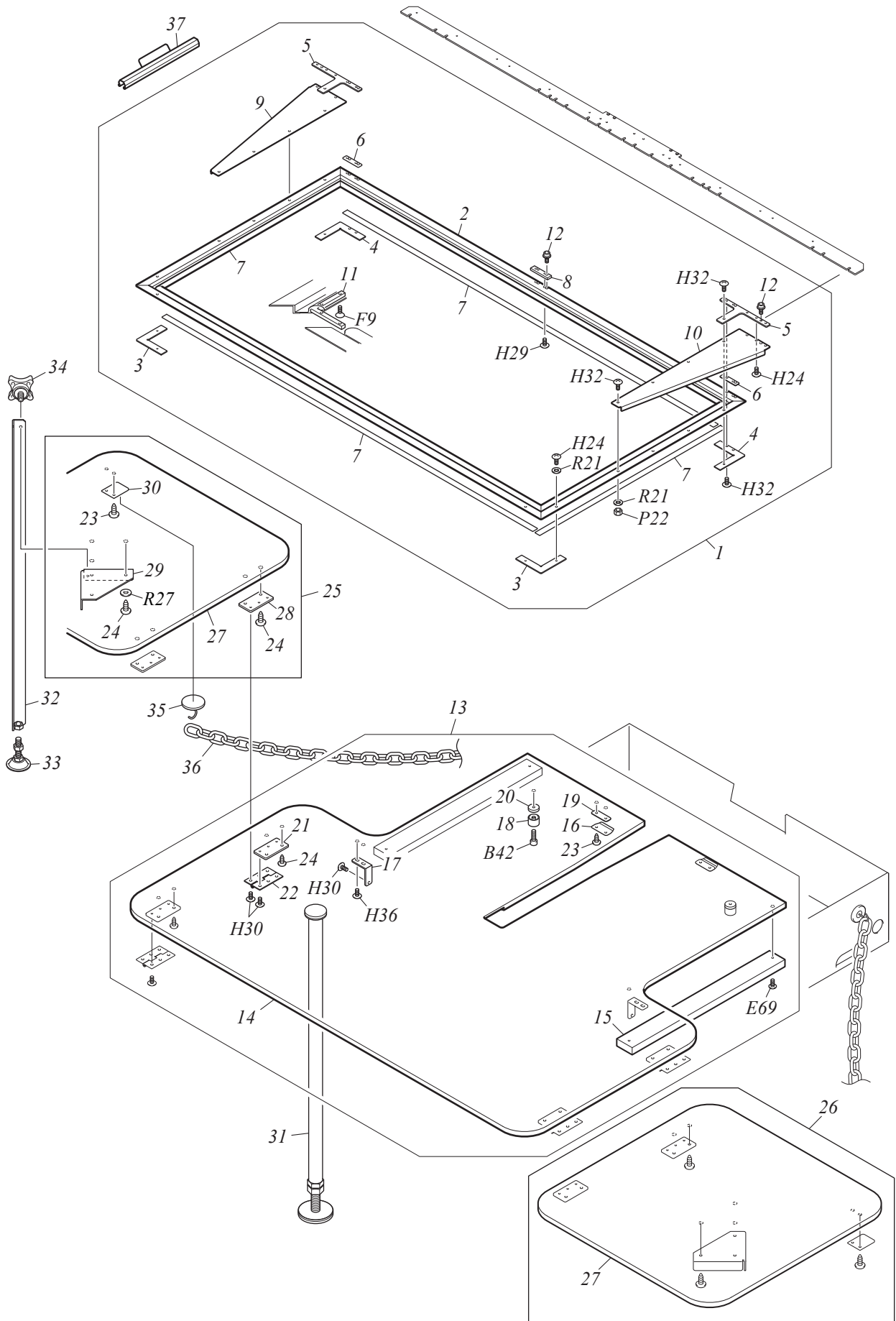
MW-15-1

No.	Part Name	Part No.	Remark
1	Z-SPEC. FRAME :0001/1200S[A]	0F4110520A20	
2	Z-SPEC. FRAME :0001/1200S[S]	0F4110520S10	
3	FELT :T1.9[S]	0G0140040S00	
4	FRAME HOLDER :1200S	0F4120240010	
5	BRACKET :MAGNETIC SENSOR	0F4140020000	
6	SENSOR PLATE :NO.1	0F4140030000	
7	STAY :HARNESS COVER	0F4150300000	
8	COVER :X MOTOR HARNESS	0F4150310000	
9	BASE :X MOTOR	0F4150360000	
10	PLATE :X MOTOR	0F4150370000	
11	BRACKET :X MOTOR	0F4150380000	
12	JOINT :PLATE :SIDE	0F4150390000	
13	JOINT :PLATE :CENTER	0F4150400000	
14	COVER :BELT	0F4150410000	
15	HOLDER :TIMING PULLEY	0F4160040000	
16	TENSIONER :X DRIVE BELT	0F4160050010	
17	BELT CATCHER :NO.1 :X	0F4160480000	
18	BELT CATCHER :NO.2 :X	0F4160490000	
19	BASE :SHAFT HOLDER PLATE	0F4160670000	
20	SHAFT HOLDER PLATE	0F4160680000	
21	COVER :Z-SPEC. FRAME SASH	0F4160690000	
22	LIFT-PREVENTIVE BLOCK :FRAME HOLDER	0F4160700000	
23	BRACKET :Z-SPEC. FRAME SASH COVER	0F5300350000	
24	COVER :Z-SPEC. FRAME :1200S[S]	0F5300440S00	
25	COVER :Z-SPEC. FRAME :1200S	0F5300440000	
26	FELT :12*2*45	0F4110020010	
27	CARD :MAGNETIC SENSOR A	0J4204400000	
28	HARNESS :X-AXIS FRAME ORIGIN SENSOR	H0Q400304000	
29	PULSE MOTOR :60MM SQUARE :WITH SENSOR[A]	0J6105400A10	
30	TIMING PULLEY :W15-16[S]	501430060S10	
31	TIMING PULLEY :W15-16	501430140020	
32	TIMING PULLEY :W50-16[S]	501490030S10	
33	STEPPED PIN :NO.1	503201210000	
34	FLANGE PIN :NO.3	503503030000	
35	SPACER :NO.2 :T0.3	510200300000	
36	PLASTIC WASHER :10.2*15*T0.5	519212030000	
37	PLASTIC WASHER :12.2*18*T0.5	519214010000	
38	E-RING :7MM DIA.	611100100000	
39	TIMING BELT :SPTG :W15-S5M0520/G	623200510000	
40	TIMING BELT :MA5 :W15-550E/LY	623A00030000	
41	MINI CLAMP :MB-2	644100080000	
42	LINEAR WAY :LWL-15C3R1470	660300100000	
43			
44			
45			
46			
47			
48			
49			
50			

Note: As for parts with mark @, please follow our instructions on Table of Contents in your parts order.

(XL03)

X-EXTENSION UNIT 2 (OPTION)



X-EXTENSION UNIT 2 (OPTION)

MW-15-2

No.	Part Name	Part No.	Remark
1	BORDER FRAME :0001/055*1200S[A]	30F103010A20	
2	BORDER FRAME :0001/055*1200S	30F103010010	
3	CORNER :BORDER FRAME :REAR	0G0220240020	
4	CORNER :BORDER FRAME :FRONT	0G0220530000	
5	CORNER :BORDER FRAME :UPPER	0G0220540000	
6	SPACER :CORNER	0G0220550000	
7	FELT :15*2*1000[S]	0G0240300S00	
8	SPACER :BORDER FRAME	0G0250150010	
9	SUPPORT :BORDER FRAME :L	0G028029L010	
10	SUPPORT :BORDER FRAME :R	0G028029R010	
11	CORNER :SQUARE FRAME :C	0G5400140000	
12	HEXAGON SOCKET HEAD FLANGE SCREW :M5*8	S123050801MZ	
13	TABLE :BORDER FRAME :X-EXTENSION[A]	0L3120170A00	
14	TABLE :BORDER FRAME	0L3120070010	
15	STAY :TABLE	030610220010	
16	TABLE HOLDER :A	030610110000	
17	BRACKET :TABLE	030610230000	
18	COLLAR :TABLE	030610130000	
19	SPACER :TABLE HOLDER	030610240000	
20	SPACER :TABLE COLLAR	030610250000	
21	BRACKET :HINGE	0L3120150000	
22	HINGE :FLAT TYPE	615300020000	
23	TRUSS HEAD TAPPING SCREW :4P*10	S530041001SD	
24	TRUSS HEAD TAPPING SCREW :5P*16	S530051601SD	
25	TABLE :X-EXTENSION UNIT :L[A]	0L312013LA00	
26	TABLE :X-EXTENSION UNIT :R[A]	0L312013RA00	
27	TABLE :X-EXTENSION UNIT	0L3120130000	
28	BRACKET :HINGE	0L3120150000	
29	BRACKET :TABLE SUPPORT	0L3120160000	
30	TABLE HOLDER	030610010010	
31	TABLE SUPPORT[A]	030540150A10	
32	TABLE SUPPORT :X-EXTENSION UNIT	0L312013C300	
33	ADJUSTER :55MM DIA.	614300280000	
34	KNOBBED SCREW :NO.2 :M5*6[S]	511F05110S00	
35	MAGNET HANGER :CR-MG101	615800120000	
36	PC CHAIN :YELLOW/BLACK :6MM DIA.	613300110000	
37	BORDER FRAME CLIP :BFF8 :L100-300[S]	0G052021@S00	
38			
39			
40			
41			
42			
43			
44			
45			
46			
47			
48			
49			
50			

Note: As for parts with mark @, please follow our instructions on Table of Contents in your parts order.

(XL03)

A, B

No.	Part No.	Remark	No.	Part No.	Remark
A Flat Fillister Head Screw			B17	S120031502TD	M3*15
A1	SA41730351CN	1/8*44*3.5	B18	S120031501TN	M3*15
A2	SA41730501CN	1/8*44*5	B19	S120031601TN	M3*16
A3	SA41730551CN	1/8*44*5.5	B20	S120031801TN	M3*18
A4	SA41730601CN	1/8*44*6	B21	S120032003TD	M3*20
A5	SA41740301CN	9/64*40*3	B22	S120032001TN	M3*20
A6	SA41740402CN	9/64*40*4	B23	S120032501TN	M3*25
A7	SA41740401SA	9/64*40*4	B24	S120033001TN	M3*30 Half Threads
A8	SA41740403CL	9/64*40*4	B25	S120040501TD	M4*5
A9	SA41740404CN	9/64*40*4	B26	S120040502TN	M4*5
A10	SA41740501CN	9/64*40*5	B27	S120040602TD	M4*6
A11	SA41740601CN	9/64*40*6	B28	S120040601TN	M4*6
A12	SA41740602CN	9/64*40*6	B29	S120040801TD	M4*8
A13	SA41740701CN	9/64*40*7	B30	S120040802TN	M4*8
A14	SA41740801CN	9/64*40*8	B31	S120041001TD	M4*10
A15	SA41740802CN	9/64*40*8	B32	S120041002TN	M4*10
A16	SA41740803CN	9/64*40*8	B33	S120041201TD	M4*12
A17	SA41741001CN	9/64*40*10	B34	S120041202TN	M4*12
A18	SA41741202CN	9/64*40*12	B35	S120041401TN	M4*14
A19	SA41741501CN	9/64*40*15	B36	S120041502TD	M4*15
A20	SA41750431TN	11/64*40*4.3	B37	S120041501TN	M4*15
A21	SA41750701CN	11/64*40*7	B38	S120041601TN	M4*16
A22	SA41750751CN	11/64*40*7.5	B39	S120041801TN	M4*18
A23	SA41750901SH	11/64*40*9	B40	S120042002TD	M4*20
A24	SA41751151CN	11/64*40*11.5	B41	S120042001TN	M4*20
A25	SA41751201CN	11/64*40*12	B42	S120042502TD	M4*25
A26	S141030801SC	M3*8	B43	S120042501TN	M4*25
A27	S141030802SD	M3*8	B44	S120042504TN	M4*25 Half Threads
A28	S141031001CC	M3*10	B45	S120043001TN	M4*30
A29	S141041001SC	M4*10	B46	S120043502TD	M4*35
A30	SA41740653TB	9/64*40*6.5	B47	S120043501TN	M4*35
A31	SA41741401CN	9/64*40*14	B48	S120044001TN	M4*40
			B49	S120044501TN	M4*45
B Hexagon Socket Head Cap Screw			B50	S120050601TN	M5*6
B1	S120020801TD	M2*8	B51	S120050801TD	M5*8
B2	S120021001TD	M2*10	B52	S120050802TN	M5*8
B3	S120480501TN	M2.6*5	B53	S120051001TD	M5*10
B4	S120030301TN	M3*3	B54	S120051002TN	M5*10
B5	S120030401TN	M3*4	B55	S120051004TP	M5*10
B6	S120030502TD	M3*5	B56	S120051201TD	M5*12
B7	S120030501TN	M3*5	B57	S120051202TN	M5*12
B8	S120030601TD	M3*6	B58	S120051401TN	M5*14
B9	S120030602TN	M3*6	B59	S120051501MZ	M5*15
B10	S120030804MZ	M3*8	B60	S120051502TD	M5*15
B11	S120030801TD	M3*8	B61	S120051503TN	M5*15
B12	S120030802TN	M3*8	B62	S120051601TN	M5*16
B13	S120031001TD	M3*10	B63	S120051801TN	M5*18
B14	S120031002TN	M3*10	B64	S120052001TD	M5*20
B15	S120031203TD	M3*12	B65	S120052002TN	M5*20
B16	S120031201TN	M3*12	B66	S120052201TN	M5*22

B

No.	Part No.	Remark	No.	Part No.	Remark
B	Hexagon Socket Head Cap Screw		B116	S120102002TD	M10*20
B67	S120052301TN	M5*23	B117	S120102001TN	M10*20
B68	S120052501TN	M5*25	B118	S120102501TN	M10*25
B69	S120053001TN	M5*30	B119	S120103001TN	M10*30
B70	S120053503TD	M5*35	B120	S120103501TN	M10*35
B71	S120053501TN	M5*35	B121	S120104001TN	M10*40
B72	S120053502TN	M5*35 Half Threads	B122	S120123001TN	M12*30
B73	S120054001TN	M5*40	B123	S120123501TN	M12*35
B74	S120054501TN	M5*45	B124	S120081801TN	M8*18
B75	S120055001TN	M5*50	B125	S120470501TN	M2.5*5
B76	S120055002TN	M5*50 Half Threads	B126	S120052502TD	M5*25
B77	S120055501TN	M5*55	B127	S120030302TD	M3*3
B78	S120056001TN	M5*60	B128	S120051504TN	M5*15 Low Head
B79	S120056003TN	M5*60 Half Threads	B129	S120031801TD	M3*18
B80	S120060801TN	M6*8	B130	S120052801TN	M5*28
B81	S120060901TN	M6*9	B131	S120044502TN	M4*45 Half Threads
B82	S120061001TN	M6*10	B132	S120081501TD	M8*15
B83	S120061202TD	M6*12	B133	S120051802TD	M5*18
B84	S120061201TN	M6*12	B134	S120470401TN	M2.5*4
B85	S120061501TD	M6*15	B135	S120033003SD	M3*30
B86	S120061502TN	M6*15	B136	S120030402TD	M3*4
B87	S120061801TD	M6*18	B137	S120033002TN	M3*30
B88	S120061802TN	M6*18	B138	S120067502TN	M6*75
B89	S120062001TN	M6*20	B139	S120050501TN	M5*5
B90	S120062501TN	M6*25	B140	S120082001TD	M8*20
B91	S120063001TN	M6*30	B141	S120086002TD	M8*60
B92	S120063501TN	M6*35	B142	S120062002TD	M6*20
B93	S120064001TN	M6*40	B143	S120043503TD	M4*35 Half Threads
B94	S120064501TN	M6*45	B144	S120044003TN	M4*40 Half Threads
B95	S120064502TN	M6*45 Half Threads	B145	S120030605TD	M3*6 Low Head
B96	S120065001TN	M6*50 Half Threads	B146	S120042202TD	M4*22
B97	S120066501TN	M6*65	B147	S120062502TD	M6*25
B98	S120067501TN	M6*75 Half Threads	B148	S120045501TN	M4*55 Half Threads
B99	S120068001TN	M6*80 Half Threads	B149	S120123001TD	M12*30
B100	S12006A001TN	M6*100	B150	S120034001TN	M3*40
B101	S120081201TN	M8*12	B151	S120035001TN	M3*50
B102	S120081502TN	M8*15	B152	S120470502TD	M2.5*5
B103	S120081503TP	M8*15	B153	S120081202TD	M8*12
B104	S120081601TN	M8*16	B154	S120042201TN	M4*22
B105	S120082001TN	M8*20	B155	S120041802TD	M4*18
B106	S120082502TN	M8*25	B156	S120041602TD	M4*16
B107	S120083001TN	M8*30	B157	S120081504TN	M8*15 With Washer
B108	S120083501TN	M8*35	B158	S120050602TD	M5*6
B109	S120084001TN	M8*40	B159	S120045001TD	M4*50
B110	S120084002TN	M8*40 Half Threads	B160	S120044002TD	M4*40
B111	S120084501TN	M8*45	B161	S120082501TD	M8*25
B112	S120084502TN	M8*45 Half Threads	B162	S120040603SC	M4*6 Extra Low Head
B113	S120085001TN	M8*50	B163	S120470301TN	M2.5*3
B114	S120086001TN	M8*60	B164	S120031401TN	M3*14
B115	S120087001TN	M8*70			

C, D, E

No.	Part No.	Remark	No.	Part No.	Remark
C Hexagon Bolt			D19	SA43751501CN	11/64*40*15
C1	S121030601SD	M3*6	D20	SA43812451CN	9/32*28*24.5
C2	S121040801SD	M4*8	D21	S143030501SD	M3*5
C3	S121042501SD	M4*25			
C4	S121051001SD	M5*10	E Pan Head Screw		
C5	S121051502SC	M5*15	E1	S160410141MZ	M1.4*1.4
C6	S121051501SD	M5*15	E2	S160020202MZ	M2*2
C7	S121052001SD	M5*20	E3	S160020301MZ	M2*3
C8	S121061501SC	M6*15	E4	S160020401MZ	M2*4
C9	S121062501TN	M6*25	E5	S160020801MZ	M2*8
C10	S121064501SD	M6*45	E6	S160470301MZ	M2.5*3
C11	S121065001SC	M6*50	E7	S160470402MZ	M2.5*4
C12	S121065002SD	M6*50	E8	S160470501MZ	M2.5*5
C13	S121065501SD	M6*55	E9	S160470801MZ	M2.5*8
C14	S121066501SD	M6*65	E10	S160471301MZ	M2.5*13
C15	S121067501SC	M6*75	E11	S160471302SD	M2.5*13
C16	S121081501TN	M8*15	E12	S160480601SD	M2.6*6
C17	S121081801TN	M8*18	E13	S160030301MZ	M3*3
C18	S121103001TN	M10*30	E14	S160030302SD	M3*3
C19	S121103502SC	M10*35	E15	S160030403CD	M3*4
C20	S121103501TN	M10*35	E16	S160030401MZ	M3*4
C21	S121104001SC	M10*40	E17	S160030402SD	M3*4
C22	S121125001TN	M12*50	E18	S160030501MZ	M3*5
C23	S12112B001TN	M12*110	E19	S160030502SD	M3*5
C24	S121082501TN	M8*25	E20	S160030601MZ	M3*6
C25	S121102501TN	M10*25	E21	S160030603SA	M3*6
C26	S121082202TN	M8*22	E22	S160030602SD	M3*6
C27	S121041001SD	M4*10	E23	S160030801MZ	M3*8
C28	S121040601SD	M4*6	E24	S160030803SA	M3*8
C29	S121061503SD	M6*15	E25	S160030802SD	M3*8
			E26	S160031001MZ	M3*10
D Round Fillister Head Screw			E27	S160031003SC	M3*10 Half Threads
D1	SA43740401CL	9/64*40*4	E28	S160031002SD	M3*10
D2	SA43740501CL	9/64*40*5	E29	S160031101SC	M3*11 Half Threads
D3	SA43740502CN	9/64*40*5	E30	S160031201MZ	M3*12
D4	SA43740503CN	9/64*40*5	E31	S160031202SD	M3*12
D5	SA43740504CN	9/64*40*5	E32	S160031401SA	M3*14
D6	SA43740601CL	9/64*40*6	E33	S160031402SD	M3*14
D7	SA43740602CN	9/64*40*6	E34	S160031501SD	M3*15
D8	SA43740603CL	9/64*40*6	E35	S160031601SD	M3*16
D9	SA43740604CN	9/64*40*6	E36	S160031801SD	M3*18
D10	SA43740682CN	9/64*40*6.8	E37	S160032001SD	M3*20
D11	SA43740801CL	9/64*40*8	E38	S160033001SD	M3*30
D12	SA43740802CN	9/64*40*8	E39	S160034002SD	M3*40
D13	SA43741001CN	9/64*40*10	E40	S160035001SD	M3*50 Half Threads
D14	SA43741201CN	9/64*40*12	E41	S160040401SD	M4*4
D15	SA43750601CN	11/64*40*6	E42	S160040501SD	M4*5
D16	SA43750652CN	11/64*40*6.5	E43	S160040601MZ	M4*6
D17	SA43751051CN	11/64*40*10.5	E44	S160040602SD	M4*6
D18	SA43751201CN	11/64*40*12	E45	S160040801SD	M4*8

E, F, G

No.	Part No.	Remark	No.	Part No.	Remark
E Pan Head Screw			F13	S150030801MZ	M3*8
E46	S160041001SD	M4*10	F14	S150030804SC	M3*8
E47	S160041201SD	M4*12	F15	S150030802SD	M3*8
E48	S160041501SD	M4*15	F16	S150030803SN	M3*8
E49	S160041801SD	M4*18	F17	S150031002MZ	M3*10
E50	S160043001SD	M4*30	F18	S150031001SD	M3*10
E51	S160045001SD	M4*50	F19	S150031201MZ	M3*12
E52	S160046001SD	M4*60	F20	S150031202SD	M3*12
E53	S160050601SD	M5*6	F21	S150031501MZ	M3*15
E54	S160050701SD	M5*7	F22	S150031601SD	M3*16
E55	S160050801SD	M5*8	F23	S150040501SD	M4*5
E56	S160051002MZ	M5*10	F24	S150040602MZ	M4*6
E57	S160051001SD	M5*10	F25	S150040601SD	M4*6
E58	S160051201SD	M5*12	F26	S150040801MZ	M4*8
E59	S160053001SD	M5*12	F27	S150040802SD	M4*8
E60	S160051501SD	M5*15	F28	S150041001MZ	M4*10
E61	S160054501SD	M5*45	F29	S150041002SD	M4*10
E62	S160055001SD	M5*50	F30	S150041201SD	M4*12
E63	S160056001SD	M5*60	F31	S150041401SD	M4*14
E64	S160047001SD	M4*70	F32	S150041501SD	M4*15
E65	S160480801SD	M2.6*8	F33	S150042001SD	M4*20
E66	S160030504SC	M3*5	F34	S150042201SD	M4*22
E67	S160480602MZ	M2.6*6	F35	S150042501SD	M4*25
E68	S160031403MZ	M3*14	F36	S150050601SD	M5*6
E69	S160042001SD	M4*20	F37	S150050801SD	M5*8
E70	S160044501SD	M4*45	F38	S150051001MZ	M5*10
E71	S160020203SD	M2*2	F39	S150051002SD	M5*10
E72	S160470502SD	M2.5*5	F40	S150051201SD	M5*12
E73	SA60740551TN	9/64*40*5.5	F41	S150051501SD	M5*15
E74	S160431001MZ	M1.7*10	F42	S150053001SD	M5*30
E75	S160043501SD	M4*35	F43	S150053501SD	M5*35
E76	S160020501SD	M2*5	F44	S150054001SD	M5*40
E77	S160052501SD	M5*25	F45	S150061502SC	M6*15
E78	S160044001SD	M4*40	F46	S150061503SD	M6*15
E79	S160470403SD	M2.5*4	F47	S150063501SD	M6*35
E80	S160021201SD	M2*12	F48	S150081201SD	M8*12
			F49	S150087001TN	M8*70
F Countersunk Head Screw			F50	S150061801SD	M6*18
F1	SA51741001CN	9/64*40*10	F51	S150052501SD	M5*25
F2	SA50750801CN	11/64*40*8	F52	S150040502MZ	M4*5
F3	S150020601SD	M2*6	F53	S150020301MZ	M2*3
F4	S150030401MZ	M3*4	F54	S150020401MZ	M2*4
F5	S150030402SD	M3*4	F55	S150480401MZ	M2.6*4
F6	S150030501MZ	M3*5	F56	S150031401SD	M3*14
F7	S150030502SD	M3*5	F57	S150020302MZ	M2*3 0-TYPE 1
F8	S151030601SD	M3*6			
F9	S150030601MZ	M3*6	G Round Countersunk Head Screw		
F10	S150030602SD	M3*6	G1	SA53730601CL	1/8*44*6
F11	S150030701SD	M3*7	G2	SA53740301CL	9/64*40*3
F12	S151030801SD	M3*8	G3	SA53740351CL	9/64*40*3.5

G, H, J, K

No.	Part No.	Remark	No.	Part No.	Remark
G Round Countersunk Head Screw			H42	S130050601SD	M5*6
G4	SA53740401CL	9/64*40*4	H43	S130050651SD	M5*6.5
G5	SA53740601CL	9/64*40*6	H44	S130050701SD	M5*7
G6	SA53740701CL	9/64*40*7	H45	S130050801MZ	M5*8
G7	SA53740951CL	9/64*40*9.5	H46	S130050802SD	M5*8
G8	SA53741201CL	9/64*40*12	H47	S130051002MZ	M5*10
G9	SA53740681CL	9/64*40*6.8	H48	S130051001SD	M5*10
			H49	S130051201MZ	M5*12
H Truss Head Screw			H50	S130051202SD	M5*12
H1	SA30730701CL	1/8*44*7	H51	S130051501SD	M5*15
H2	SA30740301CL	9/64*40*3.5	H52	S130052001SD	M5*20
H3	SA30740401CL	9/64*40*4	H53	S130052502SD	M5*25
H4	SA31740401CM	9/64*40*4	H54	S130053001SD	M5*30
H5	SA30740601CL	9/64*40*6	H55	S130053501SD	M5*35
H6	SA30740801CL	9/64*40*8	H56	S130060801SD	M6*8
H7	S130470301MZ	M2.5*3	H57	S130061001SD	M6*10
H8	S130470302SD	M2.5*3	H58	S130062201SD	M6*22
H9	S130470401MZ	M2.5*4	H59	S130062501SD	M6*25
H10	S130470402SA	M2.5*4	H60	S130063501SD	M6*35
H11	S130470403SD	M2.5*4	H61	S130064001SD	M6*40
H12	S130030301MZ	M3*3	H62	S130031501SD	M3*15
H13	S130030302SD	M3*3	H63	S130043501SD	M4*35
H14	S130030402SD	M3*4	H64	S130020201SD	M2*2
H15	S130030501MZ	M3*5	H65	S130470501SD	M2.5*5
H16	S130030502SD	M3*5	H66	S130052002MZ	M5*20
H17	S130030601MZ	M3*6	H67	S130054501SE	M5*45
H18	S130030602SD	M3*6	H68	S130050502MZ	M5*5
H19	S130030603SA	M3*6	H69	S130054001SD	M5*40
H20	S130030802SD	M3*8	H70	S130055001SD	M5*50
H21	S130030803SA	M3*8	H71	S130030801MZ	M3*8
H22	S130031001MZ	M3*10	H72	S130052201SD	M5*22
H23	S130031002SD	M3*10	H73	S130041802MZ	M4*18
H24	S130032001SD	M3*20	H74	S130055501SD	M5*55
H25	S130040401MZ	M4*4	H75	S130041202SD	M4*12 JIS
H26	S130040401SD	M4*4	H76	SA30740501CL	9/64*40*5
H27	S130040501MZ	M4*5	H77	SA30741001CL	9/64*40*10
H28	S130040502SD	M4*5			
H29	S130040601MZ	M4*6	J Round Head Screw		
H30	S130040602SD	M4*6	J1	S162020301MZ	M2*3
H31	S130040651SD	M4*6.5	J2	S162030801SD	M3*8
H32	S130040801MZ	M4*8	J3	S162030802SE	M3*8
H33	S130040802SD	M4*8	J4	S162031001MZ	M3*10
H34	S130040803MZ	M4*8 JIS			
H35	S130041002MZ	M4*10	K Slotted Set Screw		
H36	S130041001SD	M4*10	K1	SA71730351CN	1/8*44*3.5
H37	S130041201SD	M4*12	K2	SA71740601CN	9/64*40*6
H38	S130041502SD	M4*15	K3	SA71750251CN	11/64*40*2.5
H39	S130042001SD	M4*20	K4	SA71750351CN	11/64*40*3.5
H40	S130050501SD	M5*5	K5	SA71750401CN	11/64*40*4
H41	S130050602MZ	M5*6	K6	SA71750501CN	11/64*40*5

K, L, M, N

No.	Part No.	Remark	No.	Part No.	Remark
K	Slotted Set Screw		L36	S170080801TN	M8*8
K7	SA71790501CN	15/64*28*5	L37	S170081001TN	M8*10
K8	SA71791001CN	15/64*28*10	L38	S170081501TN	M8*15
K9	SA71791501CN	15/64*28*15	L39	S170031001TN	M3*10
K10	SA71791701CN	15/64*28*17	L40	S170031201TN	M3*12
K11	SA71800401CN	1/4*40*4	L41	S170053001TN	M5*30
K12	SA71800451CN	1/4*40*4.5	L42	S170061201TN	M6*12
K13	SA71800501CN	1/4*40*5	L43	S174060601TN	M6*6B
K14	SA71800601CN	1/4*40*6	L44	S170050802TN	M5*8 Narrow Treading
K15	SA71800801CN	1/4*40*8	L45	S170050602TN	M5*6 Narrow Treading
K16	SA71811201CN	9/32*28*12	L46	S170031501TN	M3*15
K17	S171050601TN	M5*6	L47	S170061501TN	M6*15
K18	S171030601SD	M3*6			
			M	Hexagon Socket Head Button Screw	
L	Hexagon Socket Head Set Screw		M1	S124030401SC	M3*4
L1	SA70730251CN	1/8*44*2.5	M2	S124040601SC	M4*6
L2	SA70730301CN	1/8*44*3	M3	S124040802SC	M4*8
L3	SA70750901CN	11/64*28*9	M4	S124040803SD	M4*8
L4	SA70750401CN	11/64*40*4	M5	S124051001SC	M5*10
L5	SA70750601CN	11/64*40*6	M6	S124051002SD	M5*10
L6	SA70750801CN	11/64*40*8	M7	S124051501SD	M5*15
L7	SA70790401CN	15/64*28*4	M8	S124081201SC	M8*12
L8	SA70790901CN	15/64*28*9	M9	S124081202SD	M8*12
L9	S170470301TN	M2.5*3	M10	S124081501SD	M8*15
L10	S170030201TN	M3*2	M11	S124030501SC	M3*5
L11	S170030301TN	M3*3	M12	S124030801SC	M3*8
L12	S170030401TN	M3*4	M13	S124030502TC	M3*5
L13	S170030501TN	M3*5	M14	S124030402SD	M3*4
L14	S170030601TN	M3*6	M15	S124030601SD	M3*6
L15	S170030801TN	M3*8	M16	S124040401SD	M4*4
L16	S170040301TN	M4*3	M17	S124030602SC	M3*6
L17	S170040401TN	M4*4	M18	S124030503SD	M3*5
L18	S170040501TN	M4*5	M19	S124031002SD	M3*10
L19	S170040601TN	M4*6	M20	S124041001SD	M4*10
L20	S170040602TN	M4*6 Half Threads	M21	S124051201SD	M5*12
L21	S170040801TN	M4*8			
L22	S170041001TN	M4*10	N	Screw with Washer	
L23	S170041201TN	M4*12	N1	S660480601SE	M2.6*6
L24	S170050401TN	M5*4	N2	S660030601SE	M3*6
L25	S170050501TN	M5*5	N3	S660030801SE	M3*8
L26	S170050601TN	M5*6	N4	S660031001SE	M3*10
L27	S170050801TN	M5*8	N5	S660031501SE	M3*15
L28	S170051001TN	M5*10	N6	S660031601SE	M3*16
L29	S170051201TN	M5*12	N7	S660031801SE	M3*18
L30	S170051501TN	M5*15	N8	S660040601SE	M4*6
L31	S170060501TN	M6*5	N9	S660040801SE	M4*8
L32	S170060601TN	M6*6	N10	S660041001SE	M4*10
L33	S170060801TN	M6*8	N11	S660041201SE	M4*12
L34	S170061001TN	M6*10	N12	S660045501SE	M4*55
L35	S170061801TN	M6*18	N13	S660051001SE	M5*10

N, P, R

No.	Part No.	Remark	No.	Part No.	Remark
N	Screw with Washer		P18	S212030001SC	M3 Type 3
N14	S660051201SE	M5*12	P19	S212030002SD	M3 Type 3
N15	S660051401SE	M5*14	P20	S212530001SC	M3.5 Type 3
N16	S660051801SE	M5*18	P21	S210040001SC	M4 Type 1
N17	S660030801MZ	M3*8	P22	S210040002SD	M4 Type 1
N18	S660030502MZ	M3*5	P23	S212040001SC	M4 Type 3
N19	S660031502MZ	M3*15	P24	S212040002SD	M4 Type 3
N20	S660030603S1	M3*6 (P-4)	P25	S217040001SD	M4 Cap
N21	S660030802S1	M3*8 (P-3)	P26	S210050001SC	M5 Type 1
N22	S660030604S1	M3*6 (P-3)	P27	S210050002SD	M5 Type 1
N23	S660031802S1	M3*18 (P-3)	P28	S212050001SC	M5 Type 3
N24	S660040602S1	M4*6 (P-3)	P29	S212050002SD	M5 Type 3
N25	S660040802S1	M4*8 (P-3)	P30	S217050001SD	M5 Cap
N26	S660041002S1	M4*10 (P-3)	P31	S210060001SC	M6 Type 1
N27	S660043001S1	M4*30 (P-3)	P32	S210060002SC	M6 Type 1 (Left)
N28	S660051002S1	M5*10 (P-3)	P33	S210060003SD	M6 Type 1
N29	S660031803S1	M3*18 (P-4)	P34	S210060004SD	M6 Type 1 (Left)
N30	S660030505S1	M3*5 (P-4)	P35	S212060001SC	M6 Type 3
N31	S660031504S1	M3*15 (P-4)	P36	S210080001SC	M8 Type 1
N32	S660031002S1	M3*10 (P-4)	P37	S210080002SD	M8 Type 1
N33	S660040803S1	M4*8 (P-4)	P38	S212080001SC	M8 Type 3
N34	S660030504S1	M3*5 (P-3)	P39	S212080002SD	M8 Type 3
N35	S660020401S1	M2*4 (P-4)	P40	S210100001SC	M10 Type 1
N36	S660031505S1	M3*15 (P-3)	P41	S213100002SD	M10 With Flange
N37	S660041202S1	M4*12 (P-3)	P42	S213100003SD	M10 With Disk Spring
N38	S660480401S1	M2.6*4 (P-4)	P43	S210120001SC	M12 Type 1
N39	S660031003S1	M3*10 (P-3)	P44	S212120001SC	M12 Type 3
N40	S660031602S1	M3*16 (P-3)	P45	S212120002SD	M12 Type 3
N41	S660030605S1	M3*6 (P-3) FOR THIN PLATE	P46	S210160001SD	M16 Type 1
N42	S660030803S1	M3*8 (P-4)	P47	S212160002SC	M16 Type 1
N43	S660031201S1	M3*12 (P-3)	P48	S212160001SD	M16 Type 3
			P49	S210200001SC	M20 Type 1
P	Nut		P50	S212470001SC	M2.5 Type 3
P1	SB10730601CN	1/8*44*6*3	P51	SB12750701SC	11/64*7*2.2 Type 3
P2	SB10740601CL	9/64*40*6*2	P52	S211040001SD	M4 Type 2
P3	SB10740602CN	9/64*40*6*3	P53	SB12740601MZ	9/64*6*2 Type 3
P4	SB10750602CN	11/64*40*6*2	P54	SB10750601CN	11/64*6*2.2
P5	SB10750603CN	11/64*40*6*3	P55	S212030003SD	M3 Type 3
P6	SB10750701CN	11/64*40*7*3	P56	S217060001SD	M6 Cap
P7	SB11750701CN	11/64*40*7*3	P57	S217030001SD	M3 Cap
P8	S210420001XA	M1.6 Type 1	P58	S212200001SC	M20 Type 3
P9	S210020001SD	M2 Type 1	P59	S212160002SC	M16 Type 3
P10	S212020002SD	M2 Type 3	P60	SB10750702CN	11/64*7*2.2
P11	S210460002SD	M2.3 Type 1	P61	SB10740605CN	9/64*40*6*1.5
P12	S210470001MZ	M2.5 Type 1	P62	S213080002SD	M8 With Flange
P13	S212480001SD	M2.6 Type 3	P63	S213080001SD	M8 With Disk Spring
P14	S210030001MZ	M3 Type 1	P64	S212100001SC	M10 Type 3
P15	S210030002SC	M3 Type 1			
P16	S210030003SD	M3 Type 1	R	Washer	
P17	S215030001SD	M3 Thumbscrew Type 2	R1	S301410301MZ	Plain M1.4*3*t0.3

R

No.	Part No.	Remark	No.	Part No.	Remark
R	Washer		R51	S402050002KD	Spring M5
R2	S301020351XZ	Plain M2*3.5*t0.5	R52	S402050003MZ	Spring M5
R3	S301020431SD	Plain M2*4.3*t0.3	R53	S402060001KC	Spring M6
R4	S301480501XB	Plain M2.6*5*t0.5	R54	S402060002KD	Spring M6
R5	S301480751XB	Plain M2.6*7.5*t0.5	R55	S402080001KC	Spring M8
R6	S301030602XZ	Plain M3*6*t0.3	R56	S402080002KD	Spring M8
R7	S301030603SC	Plain M3*6*t0.5	R57	S402100001KC	Spring M10
R8	S301030601SD	Plain M3*6*t0.5	R58	S402100002KD	Spring M10
R9	S301030701SD	Plain M3*7*t0.5	R59	S402120001KC	Spring M12
R10	S301030804SD	Plain M3*8*t0.3	R60	S305041101TP	Wave M4
R11	S301030805MZ	Plain M3*8*t0.5	R61	S305051001TN	Wave M5
R12	S301030801SC	Plain M3*8*t0.5	R62	S305061051TN	Wave M6
R13	S301030802SD	Plain M3*8*t0.5	R63	S304040851TP	With teeth M4
R14	S301030803SD	Plain M3*8*t1	R64	S304051001TP	With teeth M5
R15	S301040805SC	Plain M4*8*t0.5	R65	S306080001SC	Slant M8
R16	S301040802SD	Plain M4*8*t0.5	R66	S303040801SC	Disk Spring M4
R17	S301040804SC	Plain M4*8*t0.8	R67	S301041005EZ	Plain M4*10*t0.8
R18	S301040803SD	Plain M4*8*t0.8	R68	S301470252MZ	Plain M2.5*5*t0.5
R19	S301041004MZ	Plain M4*10*t0.8	R69	S301030605SD	Plain M3*6*t1.0
R20	S301041002SC	Plain M4*10*t0.8	R70	S301030604MZ	Plain M3*6*t0.5
R21	S301041003SD	Plain M4*10*t0.8	R71	S305051101TN	Wave M5
R22	S301041201SC	Plain M4*12*t1	R72	S301470253SD	Plain M2.5*5*t0.5
R23	S301051002SC	Plain M5*10*t0.8	R73	S301470251SC	Plain M2.5*5*t0.5
R24	S301051003SD	Plain M5*10*t0.8	R74	S305101451TN	Wave M10
R25	S301051204MZ	Plain M5*12*t0.8	R75	S304080001TP	With teeth M8
R26	S301051202SC	Plain M5*12*t0.8	R76	S301061152SD	Plain M6*11.5*t0.8
R27	S301051203SD	Plain M5*12*t0.8	R77	S301122601SC	Plain M12*26*t2.3
R28	S301061102SC	Plain M6*11*t1.6	R78	S304060002SD	With teeth M6
R29	S301061151SC	Plain M6*11.5*t0.8	R79	S304040852TP	With teeth M4 Outward
R30	S301061301SC	Plain M6*13*t1.0	R80	S301041202SD	Plain M4*12*t1.0
R31	S301061302SD	Plain M6*13*t1.0	R81	S301040901EZ	Plain M4*9*t0.3
R32	S301061601SC	Plain M6*16*t1.0	R82	S301051207EZ	Plain M5*12*t1.0
R33	S301081601SD	Plain M8*16*t1.2	R83	S301122601SD	Plain M12*26*t2.3
R34	S301081801SC	Plain M8*18*t1.6	R84	S402120002KD	Spring M12
R35	S301081802SD	Plain M8*18*t1.6	R85	S402480002KD	Spring M2.6
R36	S301081803SC	Plain M8*18*t3.2	R86	S301480752SD	Plain M2.6*7.5*t0.5
R37	S301082201SC	Plain M8*22*t3.2			
R38	S301102201SC	Plain M10*22*t1.6			
R39	S301102601SC	Plain M10*26*t3.2			
R40	S301102602SD	Plain M10*26*t3.2			
R41	S301122051SC	Plain M12*20.5*t2			
R42	S301163201SD	Plain M16*32*t2.5			
R43	S402020001KD	Spring M2			
R44	S402480001KC	Spring M2.6			
R45	S402030001KC	Spring M3			
R46	S402030002KD	Spring M3			
R47	S402530001KC	Spring M3.5			
R48	S402040001KC	Spring M4			
R49	S402040002KD	Spring M4			
R50	S402050001KC	Spring M5			

1st Edition March, 2012
10th Edition March, 2020

■ **Manufactured by:**
TISM Co.,Ltd.

NO.1800, Ushiyama-cho, Kasugai, Aichi-pref., 486-0901, Japan
Telephone:81-568-33-1161 Fax:81-568-33-1191

■ **Distributed by:**
Tajima Industries Ltd.

19-22, Shirakabe, 3-chome, Higashi-ku, Nagoya, 461-0011, Japan
Telephone:81-52-932-3444 Fax:81-52-932-2457

●Copy, reprint, or reform of a part or whole of this manual without permission is prohibited.

THE TAJIMA GROUP

<http://www.tajima.com>

Tajima Industries Ltd.

19-22, Shirakabe, 3-chome, Higashi-ku, Nagoya, 461-0011, JAPAN
TEL.81-52-932-3444 FAX.81-52-932-2457

TISM Co.,Ltd.

NO.1800, Ushiyama-cho, Kasugai, Aichi-pref., 486-0901, JAPAN
TEL.81-568-33-1161 FAX.81-568-33-1191