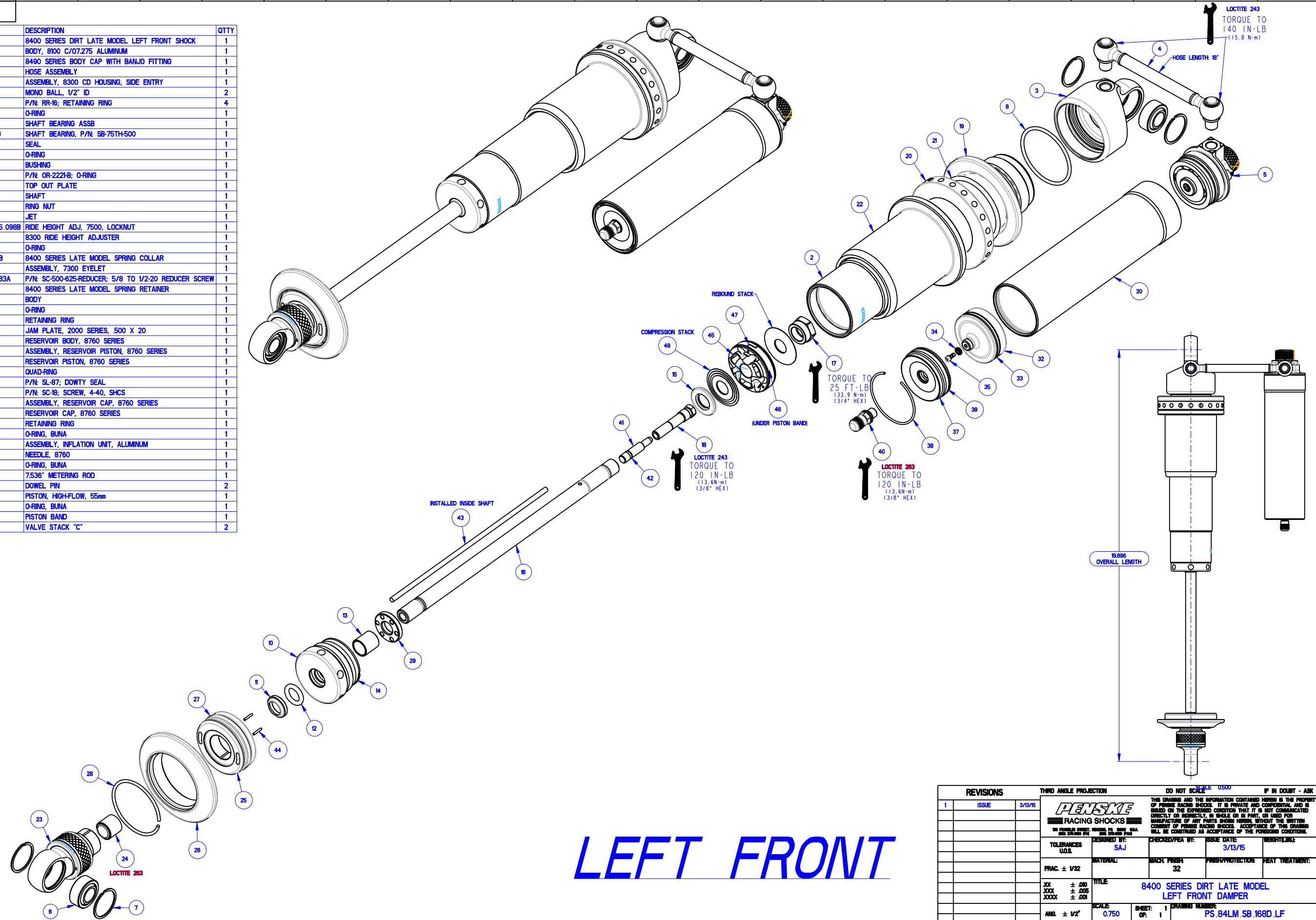


NO.	DRAWING	DESCRIPTION	QTY
1	PS.84LM.SB.168D.LF	8400 SERIES DIRT LATE MODEL LEFT FRONT SHOCK	1
2	BD.54893CO.AL	BODY, 8100 C/07.275 ALUMINUM	1
3	BC.8490.BANJO	8490 SERIES BODY CAP WITH BANJO FITTING	1
4	HO.83XX.SW.003A	HOSE ASSEMBLY	1
5	AS.83SIDE	ASSEMBLY, 8300 CD HOUSING, SIDE ENTRY	1
6	MO.8T	MONO BALL, 1/2" ID	2
7	RR.16	P/N: RR-16; RETAINING RING	4
8	OR.2135.B	O-RING	1
9	AS.75TH.500.SB	SHAFT BEARING ASSB	1
10	SB.75TH.500.060B	SHAFT BEARING, P/N: SB-75TH-500	1
11	SL.06	SEAL	1
12	OR.2206.V	O-RING	1
13	BU.08DUJO	BUSHING	1
14	OR.2221.B	P/N: OR-2221-B; O-RING	1
15	VW.7600	TOP OUT PLATE	1
16	SH.76A7	SHAFT	1
17	NT.02R	RING NUT	1
18	JT.76RD	JET	1
19	RH.84LM.LOCKNUT.55.098B	RIDE HEIGHT ADJ., 7500, LOCKNUT	1
20	RH.84LM.250.099B	8300 RIDE HEIGHT ADJUSTER	1
21	OR.2227.B	O-RING	1
22	CO.84LM.250.SP.241B	8400 SERIES LATE MODEL SPRING COLLAR	1
23	AS.7338EYELET	ASSEMBLY, 7300 EYELET	1
24	SC.500.625.INSERT.183A	P/N: SC-500-625-REDUCER; 5/8 TO 1/2-20 REDUCER SCREW	1
25	SR.84LM.325B	8400 SERIES LATE MODEL SPRING RETAINER	1
26	SR.52250.WR.138B	BODY	1
27	OR.2224.B	O-RING	1
28	RR.5206	RETAINING RING	1
29	NT.2000J	JAM PLATE, 2000 SERIES, 500 X 20	1
30	RB.767	RESERVOIR BODY, 8760 SERIES	1
31	AS.76RESPISTON	ASSEMBLY, RESERVOIR PISTON, 8760 SERIES	1
32	PI.76	RESERVOIR PISTON, 8760 SERIES	1
33	OR.4222.B	QUAD-RING	1
34	SL.87	P/N: SL-87; DOWTY SEAL	1
35	SC.18	P/N: SC-18; SCREW, 4-40, SHCS	1
36	AS.76RESCAP	ASSEMBLY, RESERVOIR CAP, 8760 SERIES	1
37	CP.76	RESERVOIR CAP, 8760 SERIES	1
38	RR.06	RETAINING RING	1
39	OR.2222.B	O-RING, BUNA	1
40	IU.20.A	ASSEMBLY, INFLATION UNIT, ALUMINUM	1
41	NE.76	NEEDLE, 8760	1
42	OR.2007.B	O-RING, BUNA	1
43	MR.767536	7.536" METERING ROD	1
44	DO.06	DOWEL PIN	2
45	PI.HFX005	PISTON, HIGH-FLOW, 55mm	1
46	OR.2028.B	O-RING, BUNA	1
47	PB.55T	PISTON BAND	1
48	VS.C	VALVE STACK "C"	2



**LEFT FRONT**

REVISIONS		THIRD ANGLE PROJECTION	DO NOT SCALE	IF IN DOUBT - ASK
1	ISSUE	3/13/15	SCALE: US00	
		<small>THIS DRAWING AND THE INFORMATION CONTAINED HEREIN IS THE PROPERTY OF PENSKE RACING SHOCKS. IT IS PRIVATE AND CONFIDENTIAL AND IS ISSUED ON THE EXPRESSED CONDITION THAT IT IS NOT COMMUNICATED DIRECTLY OR INDIRECTLY, IN WHOLE OR IN PART, OR USED FOR MANUFACTURE OF ANY PARTS THEREOF, WITHOUT THE WRITTEN CONSENT OF PENSKE RACING SHOCKS. ACCEPTANCE OF THIS DRAWING WILL BE CONSTRUED AS ACCEPTANCE OF THE FOREGOING CONDITIONS.</small>		
DESIGNED BY: SAJ		CHECKED/PEA BY:	ISSUE DATE: 3/13/15	WEIGHT/LBS:
TOLERANCES U.O.S.		MATERIAL:	MACH. FINISH: 32	FINISH/PROTECTION: PEAT TREATMENT:
FRAC. ± 1/32		TITLE: 8400 SERIES DIRT LATE MODEL LEFT FRONT DAMPER		
JXX ± .010	JXXX ± .005	SCALE: 0.750		
JXXXX ± .001	SHEET: 1			DRAWING NUMBER: PS.84LM.SB.168D.LF
ANG. ± 1/2°		SHEET: 1		