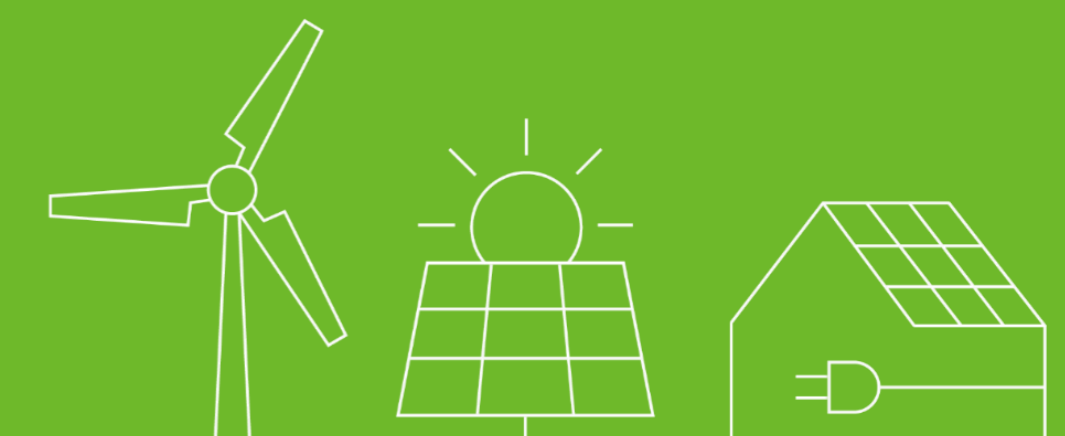




Dry Contact Work Mode



SHENZHEN GROWATT NEW ENERGY
TECHNOLOGY CO.,LTD

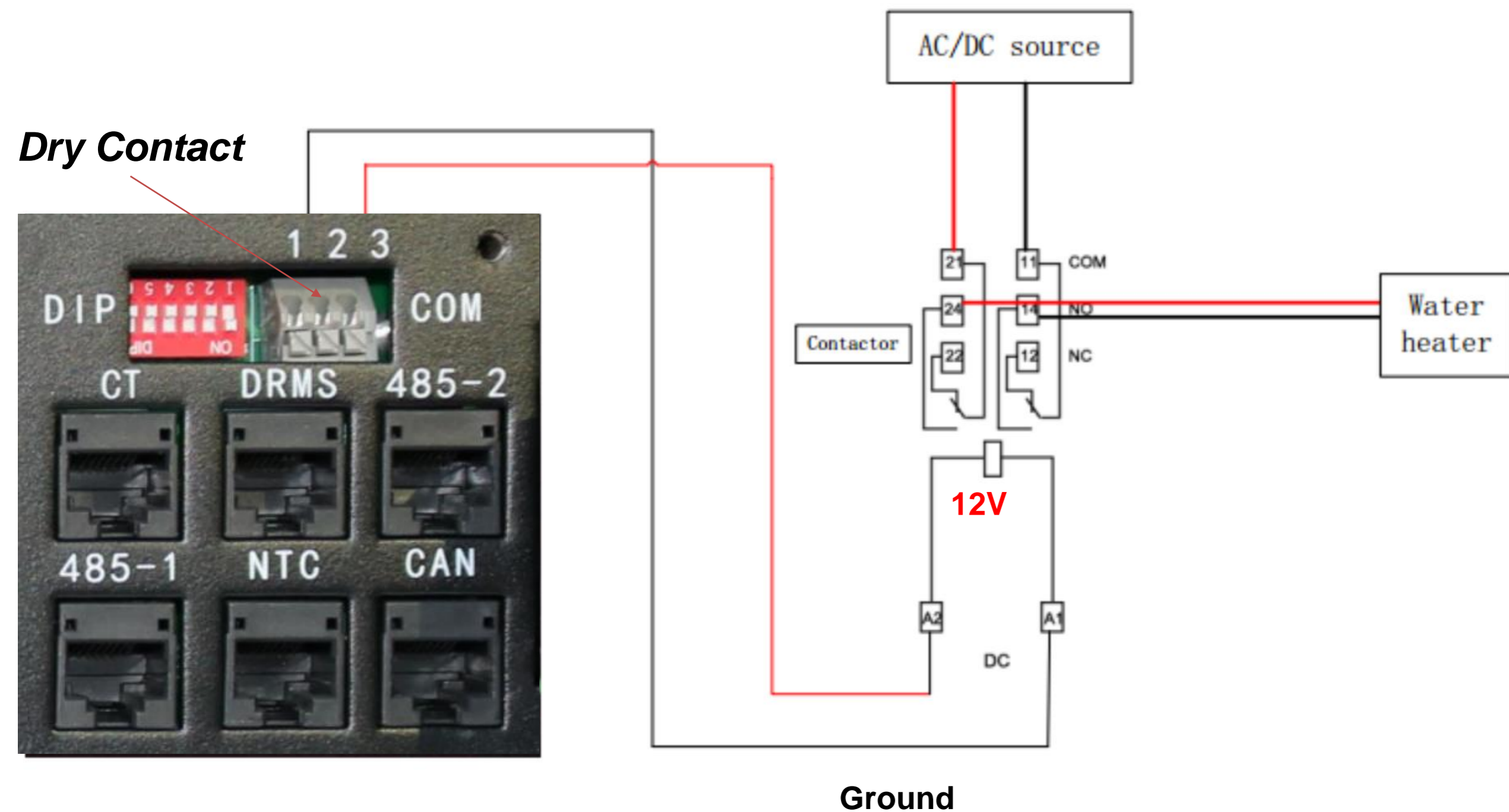
GROWATT



Dedicated to Becoming

The World's Largest Supplier of Smart Energy Solutions

Wiring Connection of Dry Contact

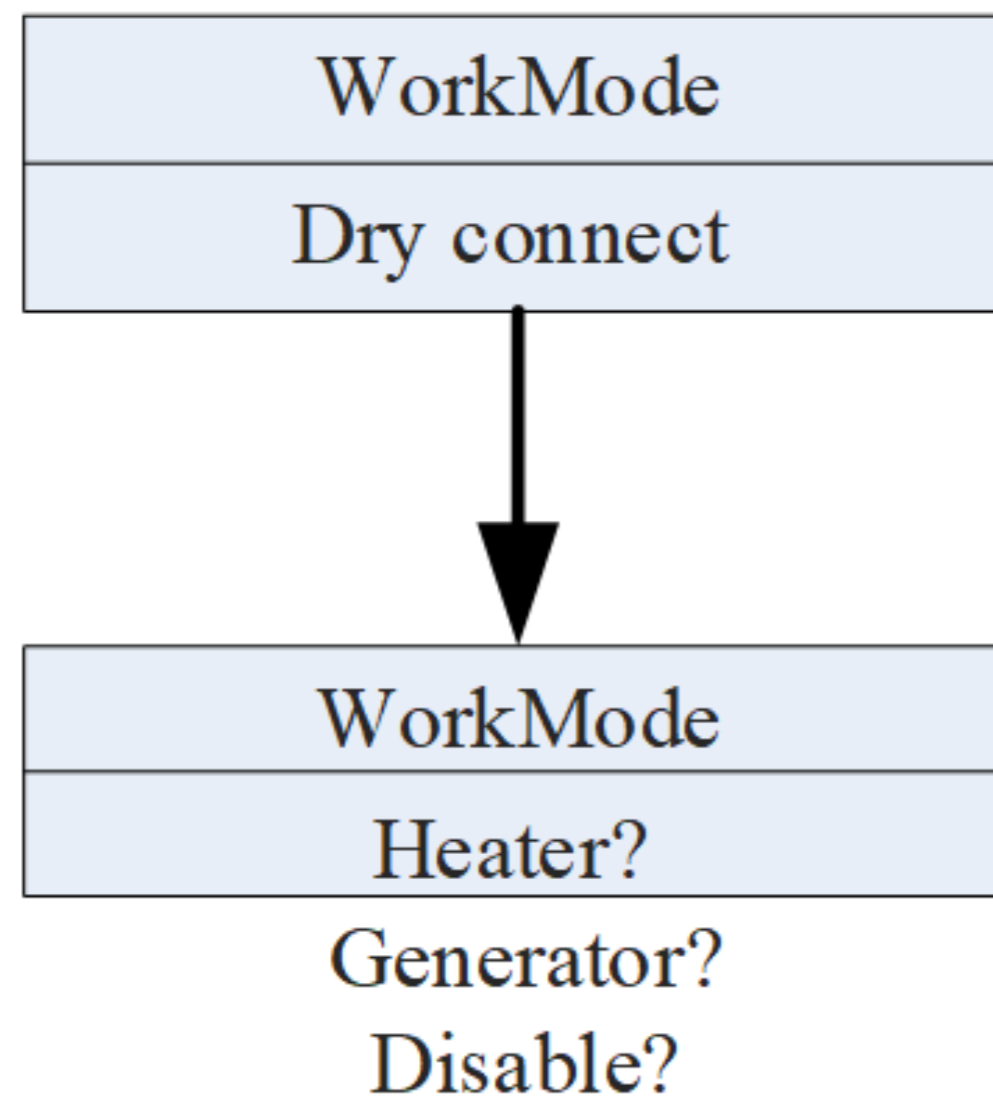


The contactor here uses **Finder Type 48.12** as an example, and the contactor model can be selected according to the actual needs of customers, the power consumption of the contactor control coil is required to be within **2W**

The control voltage between Port 1 - Port 3 of dry contact is **12V**

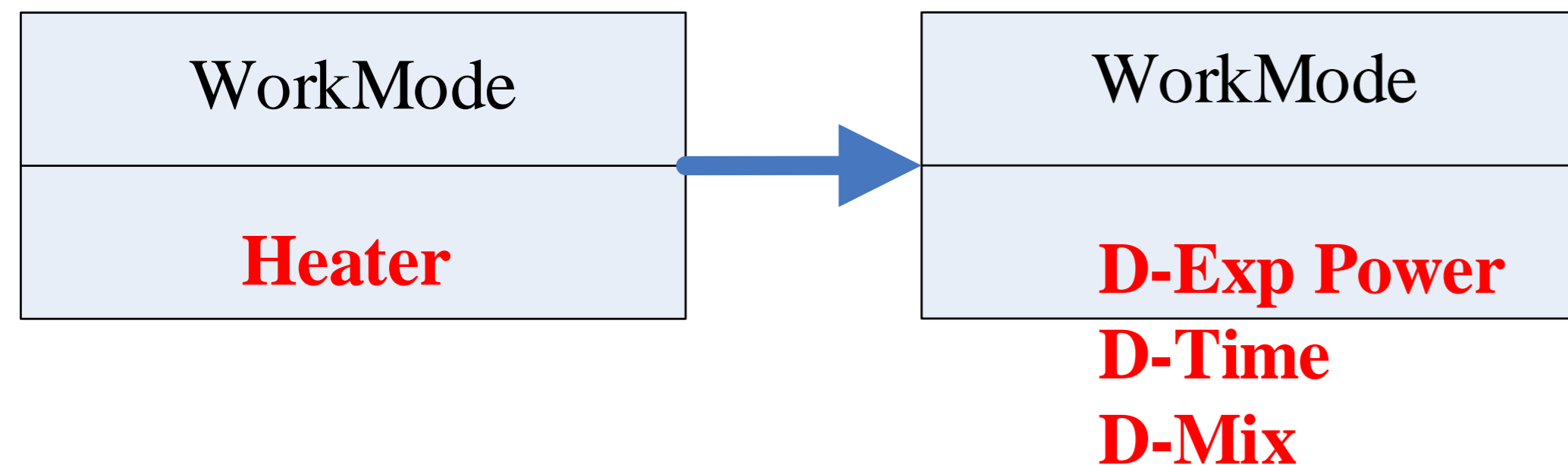
Only be available in SPH 3000-6000

Multiple Work Modes



The dry contact supports Heater and Generator work modes, which could be set through the LCD of SPH 3000-6000

Heater Modes



For **Heater mode**, it supports three different control logic

➤ D-Export power

When the surplus solar power exceeds the set value, the dry contact will offer the 12V power source to the relay then activate the heater, and stop offering the 12V power source when the surplus solar power is lower than the other set value

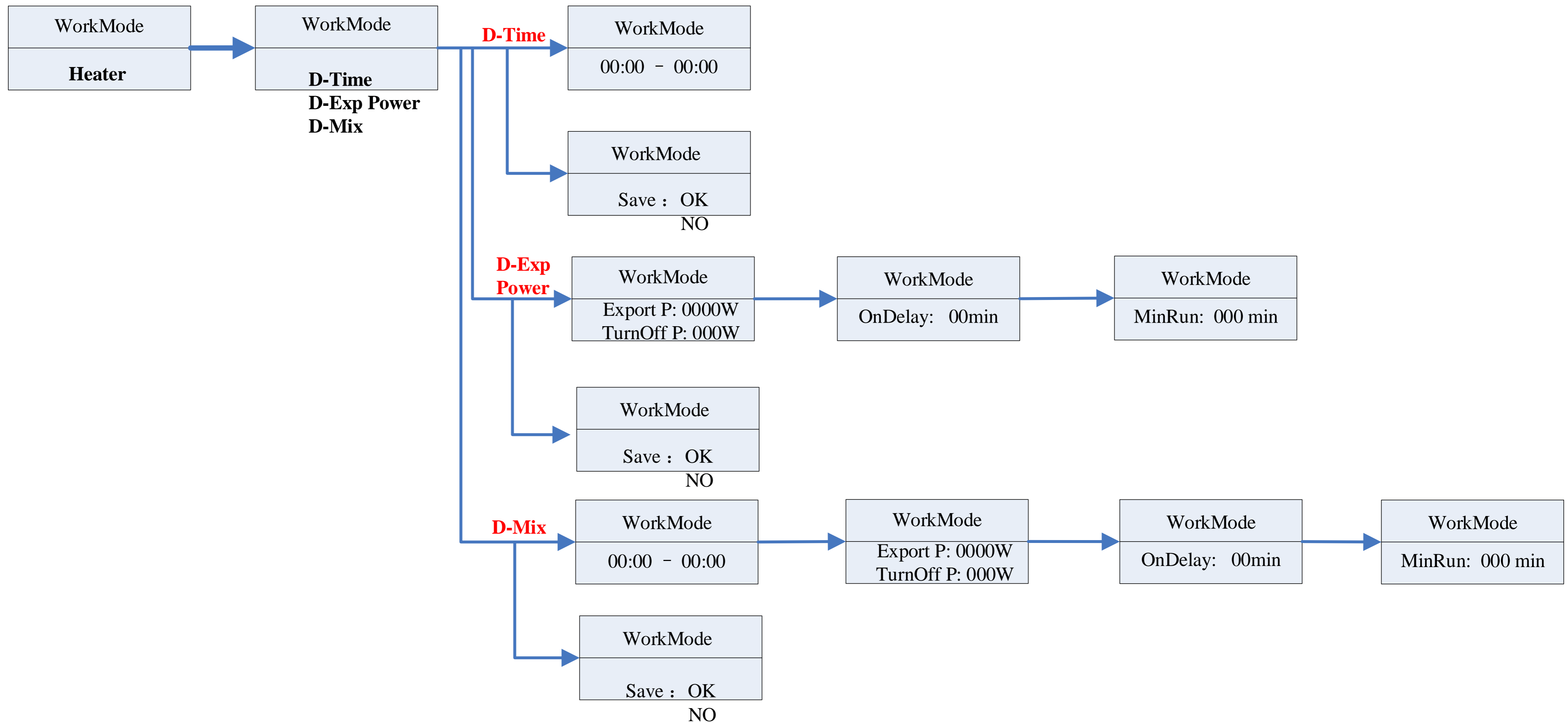
➤ D-Time

Controlling the 12V power source to ensure the heater work during the time period you set.

➤ D-Mix

This mode mixes D-Export power and D-time modes, during the time period you set, when the surplus solar power exceeds the set value, the dry contact will offer the 12V power source to the relay then activate the heater, and stop offering the 12V power source when the surplus solar power is lower than the other set value

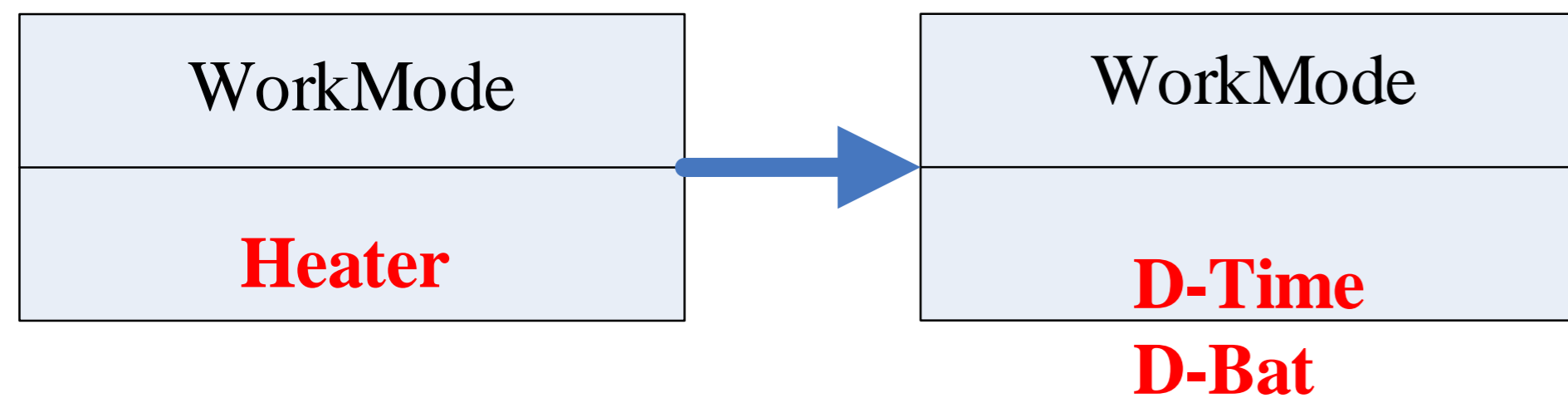
Heater Modes – Setting Route



*On Delay: The system will offer 12V power source after the delay time while the setting conditions are met

*Min Run: Ensure the system be working for a minimum time for one time while the setting conditions are met, avoiding the heater switch on/off frequently

Generator Modes



For **Generator mode**, it supports two different control logic

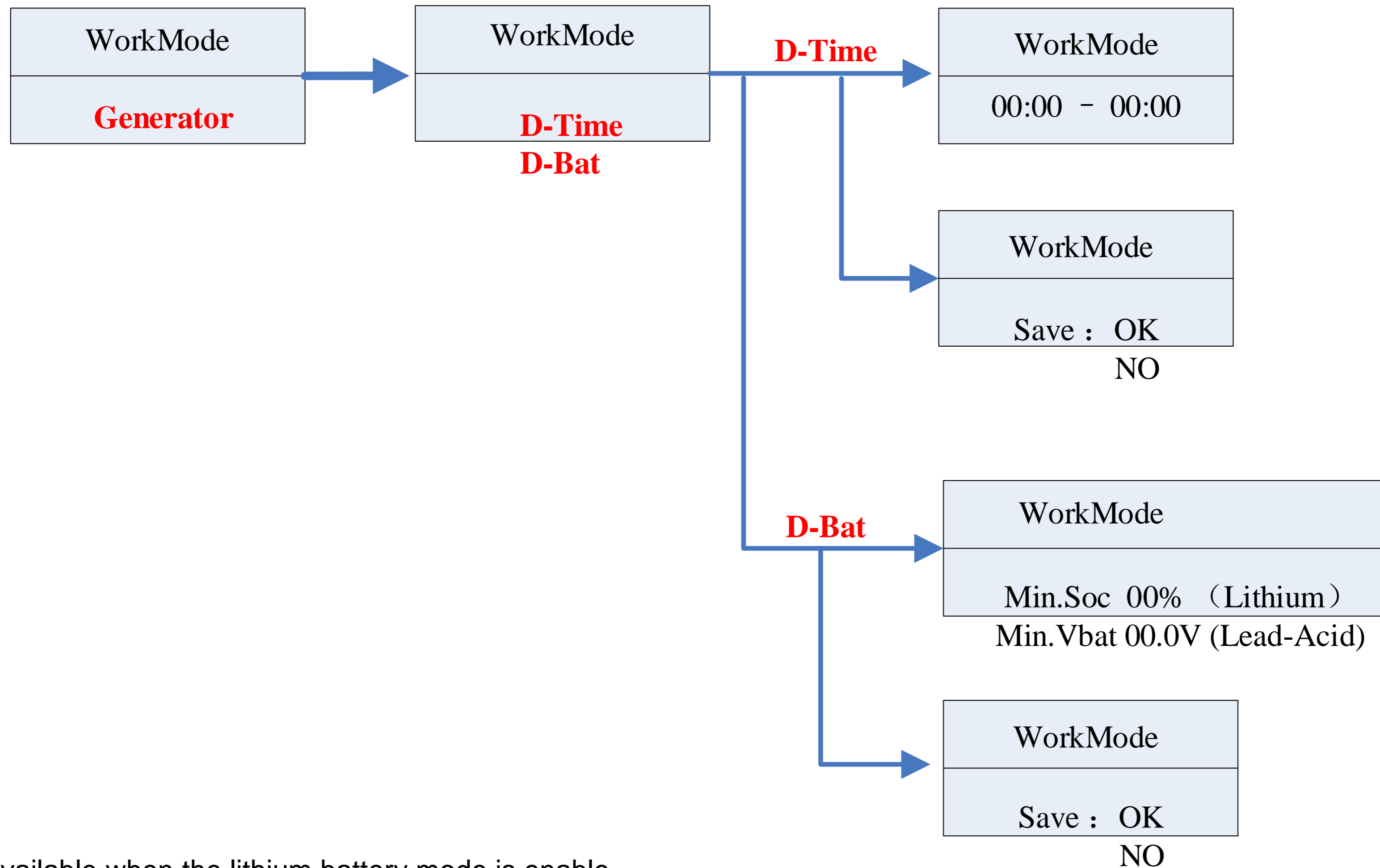
➤ D-Time

Controlling the 12V power source to ensure the generator work during the time period you set.

➤ D-Bat

When the SOC of the lithium battery or voltage of the lead-acid battery is lower than the set value, the dry contact will offer 12V power source to the relay then activates the generator

Generator Modes - Setting Route



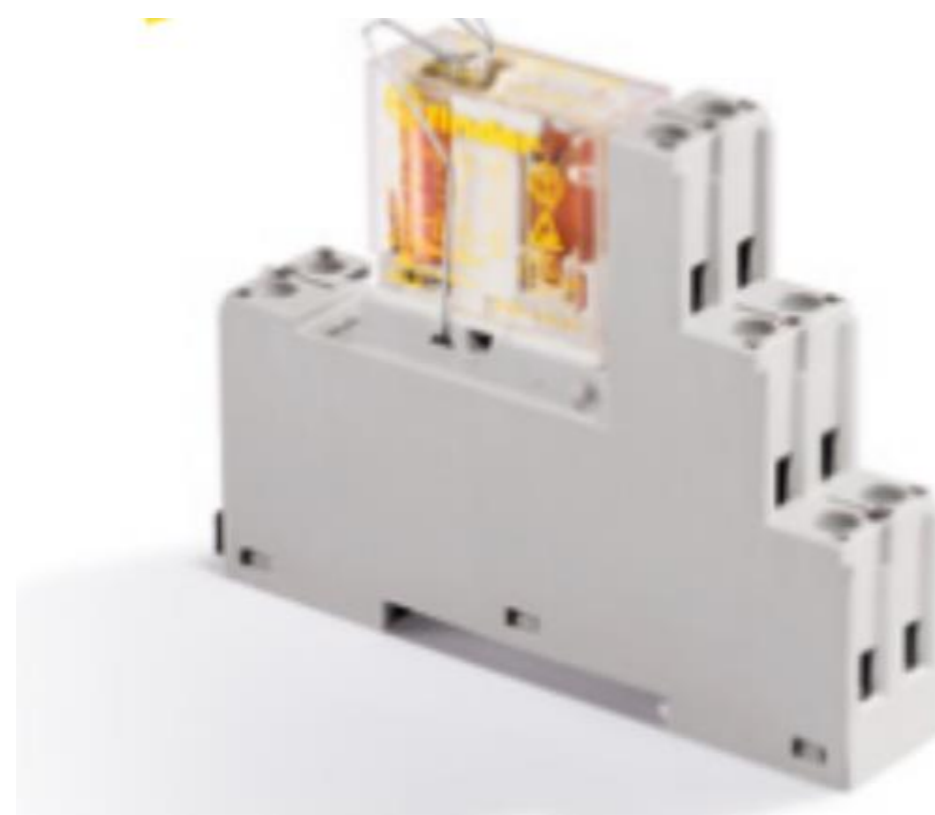
*Min Soc 00%: Only be available when the lithium battery mode is enable

*Min Vbat 00.0V: Only be available when the lead-acid battery mode is enbale

Compatible Relay



Weidmuller Relay Termseries 12V DC 6 Amp 1CO



Finder Relay series 48 – 8A/10A, 12VDC+

Thanks!



www.ginverter.com



Copyright© 2020 Growatt New Energy Technology CO., LTD

All Rights Reserved. The information contained in this document is only for reference purpose and subject to change by company officials.

