



# Wall Mount Swing-Out Cabinet 12U x 18.5" Usable Depth - Black

RM-551-12U - Specifications

## Description

This 12U wall mount swing-out cabinet comes with a lockable front door, lockable swing out back and removable/lockable side panels. The swing-out back door allows for easy access during installation. It is typically used for housing network and DVR equipment used in small offices and homes. (Fans sold separately)

## Physical Characteristics

Color	Black - Powder Coated
Material	SPCC Cold Rolled Steel
Material Thickness	Rails:1.35mm, Others:1.0 mm
Front Doors	Removable Front Door, Opening Angle is Over 180 Degrees, Lockable
Swing Out Back	Opening Angle is Over 90 Degrees, Lockable - Requires Two Keys to Open
Lockable Side Panels	Yes
Removable Side Panels	Yes
Adjustable Mounting Profile Installation	Yes
Assembly Required	No
Loading Capacity	Maximum 110 lbs [50 kg]
Cable Entries	Cable Entry on Top and Bottom Panels
Width	19 inches
Capacity	12U
Product Dimensions	24.8 H, 23.6 W, 21.6 D inches [63 H, 60 W, 55 D cm]
Mounting Rails	2 pairs of square hole rails Adjustable depth 75mm, 85mm, 95mm 105mm, 115mm (Measured from the Glass to the Rail)
Usable Mounting Dimensions	12U Height x 19" Wide x 18.5" Deep
Cooling Fans	Not Included, Sold Separately (RM-615)
Grounding Stud	Yes



## Compatible Products

Products RM-500-BRUSH, RM-615

## Approvals/Environmental

ANSI/EIA, RS-310-D, IEC60297-2,	Yes
DIN41494 PART1, PART7	Yes
RoHS, Reach	Yes

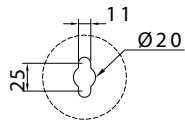
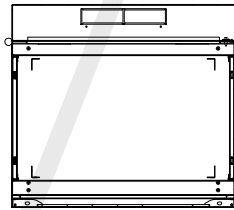
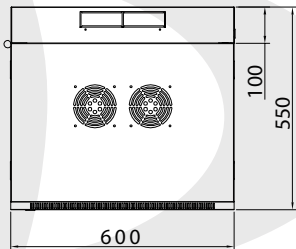
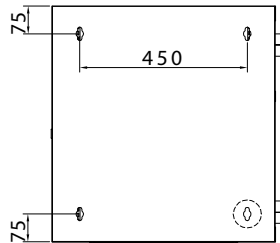
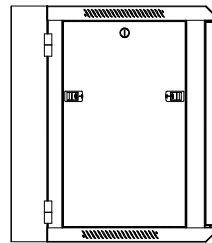
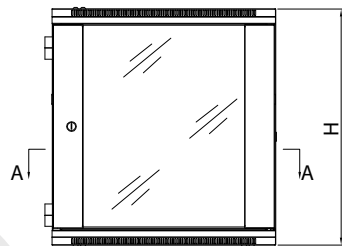
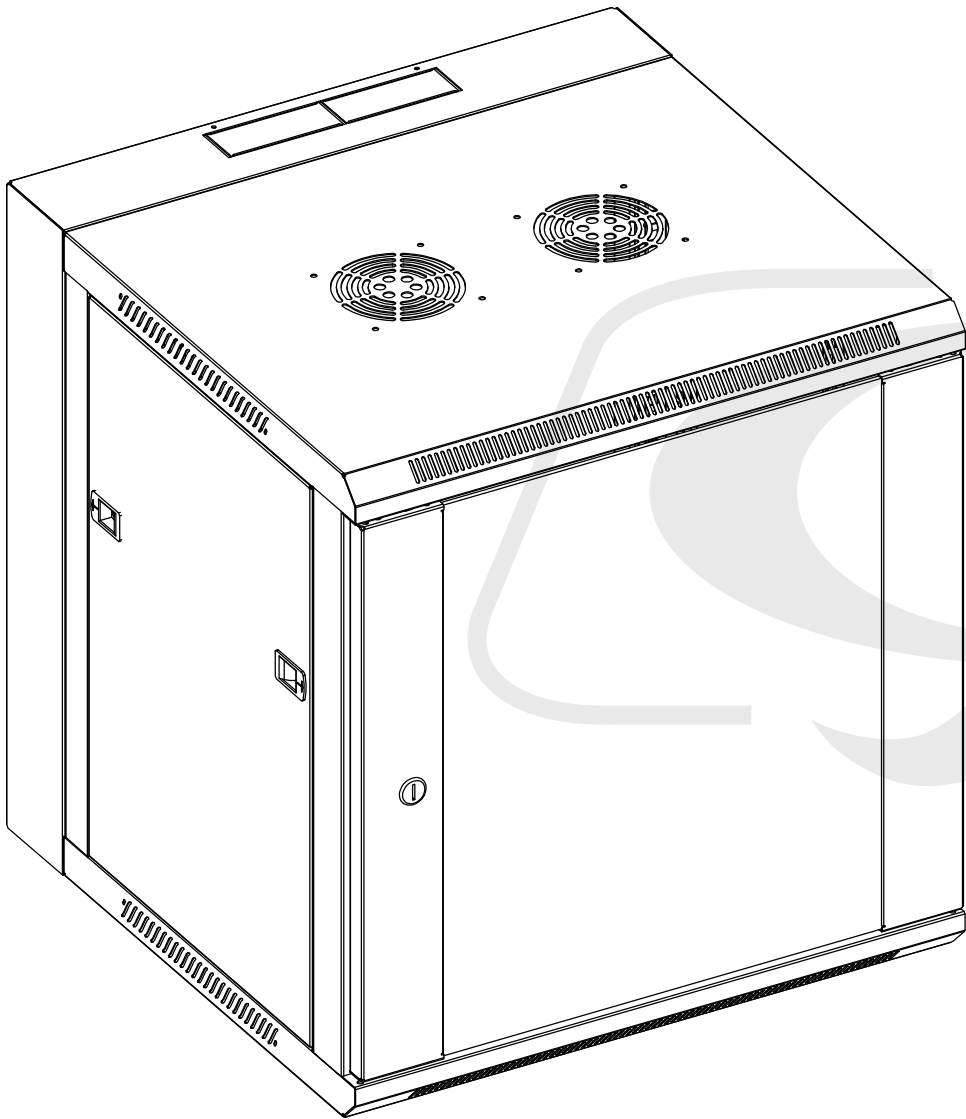
## Packaging Information

Package Quantity	1 - Wall Mount Swing-Out Cabinet 12U (Assembled)
Mounting Hardware	10 Sets – M6 Screws and Cage Nuts
Product Weight	66 lbs



# Wall Mount Swing-Out Cabinet 12U x 18.5" Usable Depth - Black

RM-551-12U - Line Drawing



A-A Section

