



19 inch Front Mount Vented Shelf (16 inch Depth) - 3U

RM-302V-3U - Specifications

Description

This front mount vented shelf is 3U in height and mounts on any standard 19" rack or cabinet. It is used to shelve non-rackmount equipment on a relay rack or cabinet.

Physical Characteristics

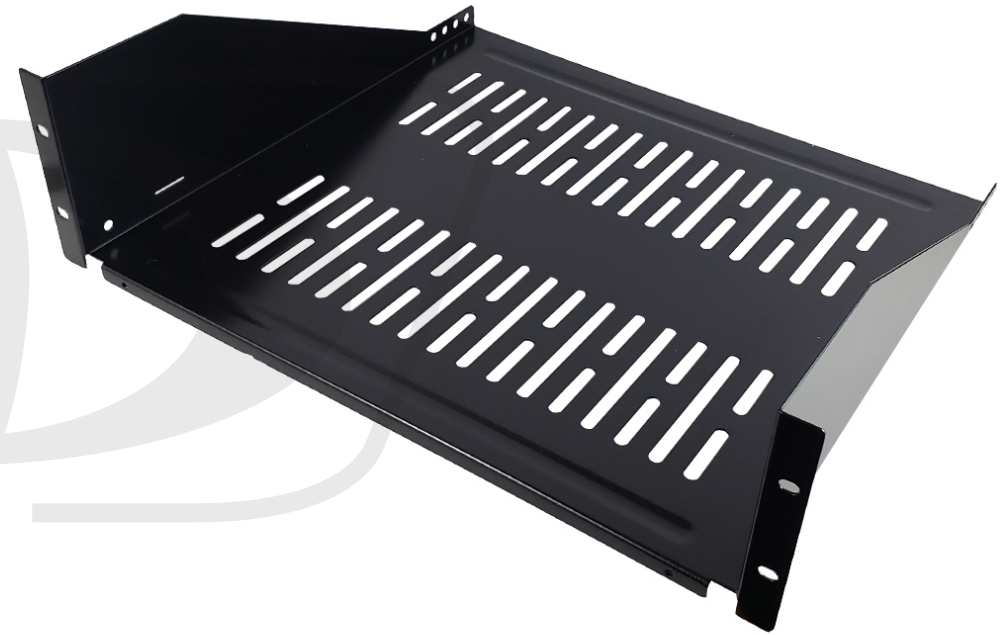
Color	Black
Mounting Style	Front Mount Vented Shelf Powder
Finish	Coated
Material	1.5mm Thick Steel
Height in Units	3U
Height in Inches	5.25 inches [13.4cm]
Depth in Inches	16 inches [40.6cm]
Number of Mounting Holes	4
Weight Capacity	80 lbs [36.3kg]
Mounting Hardware	Included

Approvals

RoHS, Reach	Yes
-------------	-----

Packaging Information

Package Quantity	1
Mounting Hardware	4 Sets - M5 Screws and Cage Nuts
Product Weight	5.3 lbs [2.4kg]





19 inch Front Mount Vented Shelf (16 inch Depth) - 3U

RM-302V-3U - Line Drawing

