



19 Inch Front Mount Vented Shelf (12 Inch Depth) - 2U

RM-300V-2U - Specifications

Description

This front mount vented shelf is 2U in height and mounts on any standard 19" rack or cabinet. It is used to shelve non-rackmount equipment on a relay rack or cabinet.

Physical Characteristics

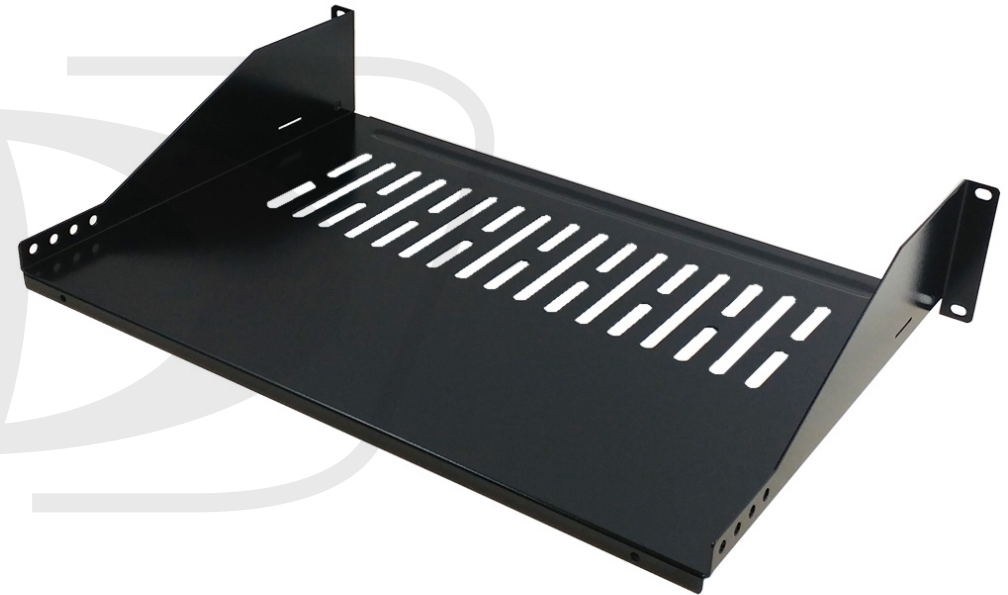
Color	Black
Mounting Style	Front Mount Vented Shelf
Finish	Powder Coated
Material	1.5mm Thick Steel
Height in Units	2U
Height in Inches	1.75 inches [4cm]
Depth in Inches	12 inches [30.5cm]
Number of Mounting Holes	4
Weight Capacity	48.5 lbs [22kg]
Mounting Hardware	Included

Approvals

RoHS, Reach	Yes
-------------	-----

Packaging Information

Package Quantity	1
Mounting Hardware	4 Sets - M5 Screws and Cage Nuts
Product Weight	5.2 lbs [2.4kg]
Box Dimensions in Inches	21 x 13 x 4





19 Inch Front Mount Vented Shelf (12 Inch Depth) - 2U

RM-300V-2U - Line Drawing

