



Vertical Wall Mount Rack - 6U

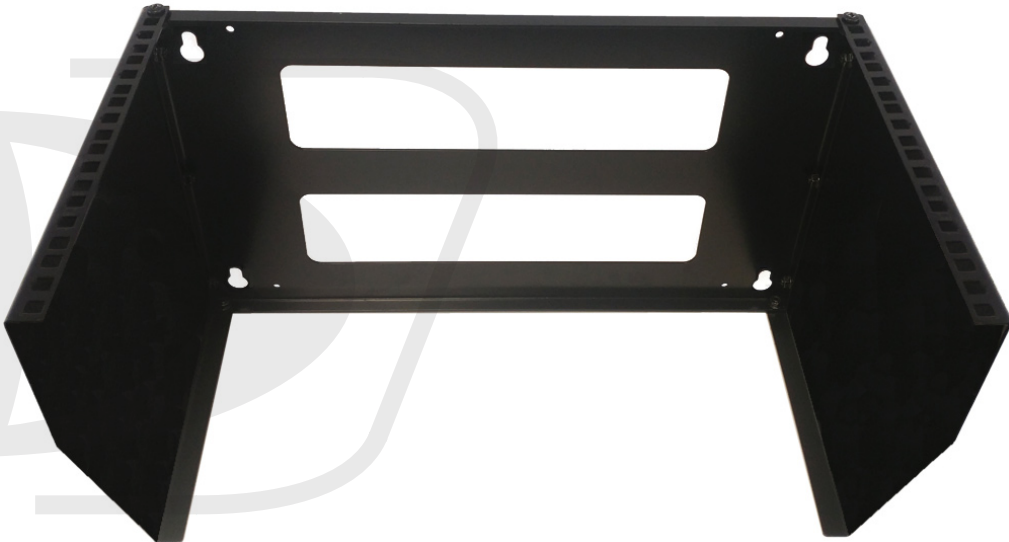
RM-250-6U - Specifications

Description

This vertical wall mount rack is 6U in depth. It is used for mounting 19" wide networking equipment vertically. Works well in a small office or home where space is limited.

Physical Characteristics

Color	Black
Finish	Powder Coated
Material	2.0mm SPCC Cold Rolled Steel
Depth in Units	6U
Height in Inches	11.3 inches [287mm]
Rail Mounting Style	Square Hole Punched Rails
Mounting Rail Thickness	2.2mm
Mounting Width	19 inches
Overall Dimensions	11.3H x 19.2W x 11.2D Inches
Rear Wire Access Hole	2 (15.6 x 3 inches)
Load Capacity	66lbs (30kg)
Wall Mounting Hardware	Not Included
Equipment Mounting Hardware	Included



Approvals/Environmental

ANSI/EIA, RS-310-D	Yes
IEC60297-2, DIN41494	Yes
PART1, PART7	Yes
RoHS, Reach	Yes

Packaging Information

Package Quantity	1
Product Weight	9 lbs [4.08kg]
Included in Package	1 - Vertical Wall Mount Rack
	10 - M6 Black Screws with Washers and Clip Nuts
	10 - M6 Clip Nuts



Vertical Wall Mount Rack - 6U

RM-250-6U - Line Drawing

