



IEC C20 to 2x IEC C19 Power Splitter Cable - SJT - 12AWG

PWC-225D-xx - Specifications

Description

This power cord consists of a C20 male on one end and two C19 females on the other end. It is typically used on devices with multiple power supplies sharing one receptacle. These cables are constructed with UL mandated inner plastic frame molds to enhance terminal alignment and high quality molds. The connectors premium quality to ensure a snug fit into PDU receptacles. Each assembly is 100% continuity tested and 100% HVT (High Voltage) tested and inspected before shipping.

Physical Characteristics

Colors	Black
Number of Conductors	3 Conductor
Lengths Available	3ft / 6ft
Wire Gauge	12AWG
Jacket	Heavy Duty SJT
Jacket Material	100% Virgin PVC - Polyvinyl Chloride
Jacket Fire Rating Strain	VW-1
Relief	Molded 100% Virgin PVC
Conductor Material	100% bare copper
Temperature Rating	-20 deg C to 105 deg C

Connectors

Connector A	IEC 60320 C20
Connector B	IEC 60320 C19
Connector B	IEC 60320 C19

Performance

Power Rating	20 Amp / 250 Volt
--------------	-------------------

Approvals/Product Support

C19, C19, C20, Cable	c(UL)us
ISO	ISO 9001:2015, ISO 14000
RoHS/Reach/Conflict Minerals	Yes
Country of Origin	Vietnam

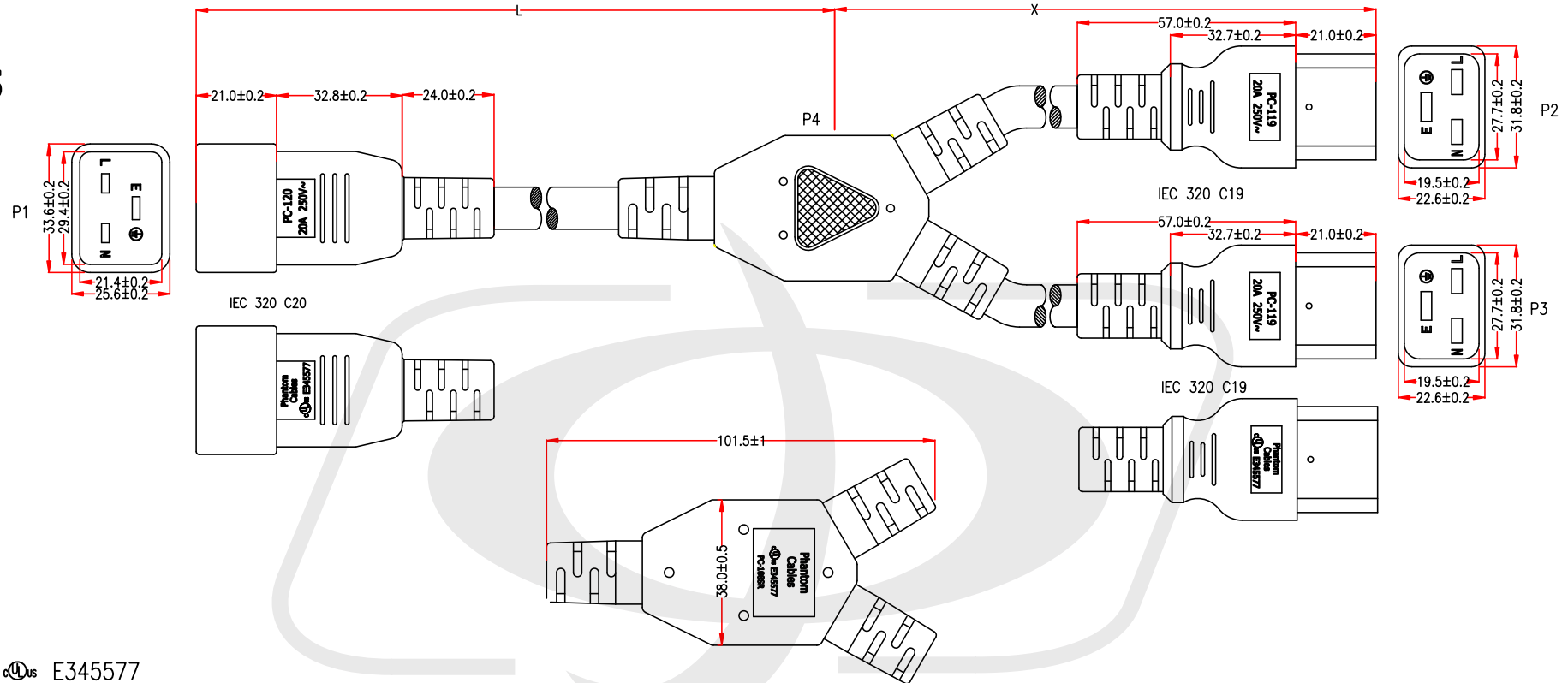
Packaging Information

Package Quantity	1
------------------	---

Warranty Information

Warranty	Limited Lifetime
----------	------------------





P1,P2,P3,P4: cULus E345577

CABLE MARKING:

Phantom Cables c(UL)us E345578 SJT 3/C 12AWG(3.31mm²) 105°C 300V VW-1

120137B2F12E(FP298-04)		
P1	P2	P3
BLACK L	L	L
WHITE N	N	N
GREEN E	E	E

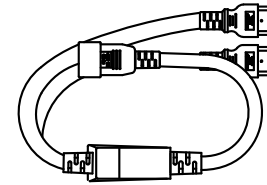
Cable Length
Unless Other Spec.
Tolerances:

0 ~200mm	±10mm
201~1000mm	±20mm
1001 ~1500mm	±25mm
1501~2100mm	±30mm
2100mm↑	±40mm

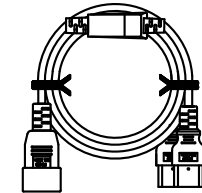
THE CABLE MARKING IS CONCAVE LETTERING MOULD

P/N	LENGTH(Lmm)	LENGTH(Xmm)	UPC
PWC-225D-03	305mm	610mm	675678063000
PWC-225D-06	1219mm	610mm	675678063017

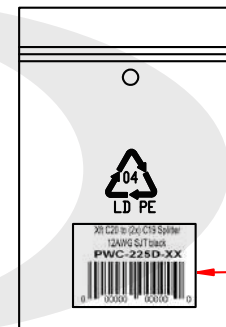
PACKING A: <3FT



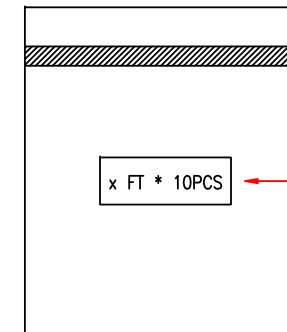
PACKING B: ≥3FT



PACKING:
1PC IN A ZIP BAG

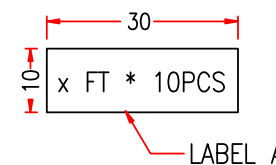


PACKING: 1-10FT
10PCS IN A BIG POLYBAG

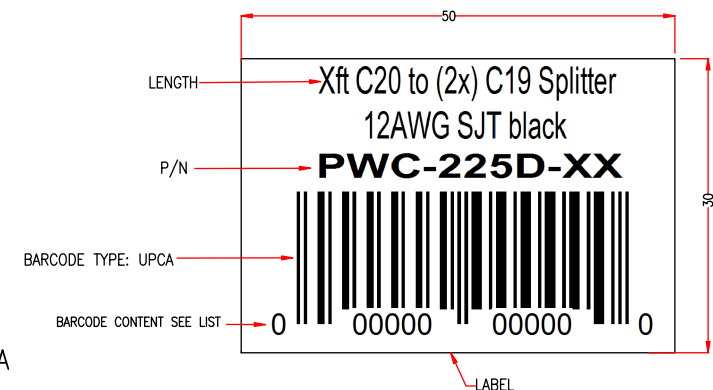


LABEL

LABEL A



LABEL A



*NOTE: All relevant materials are complied with RoHS directive .