



IEC C14 to 2x NEMA 5-15R Power Splitter Cable - SJT - 16AWG

PWC-202B-01 - Specifications

Description

This power cord consists of a C14 male on one end and two 5-15R females on the other end. It is typically used on devices with multiple power supplies sharing one receptacle. These cables are constructed with UL mandated inner plastic frame molds to enhance terminal alignment and high quality molds. The connectors premium quality to ensure a snug fit into PDU receptacles. Each assembly is 100% continuity tested and 100% HVT (High Voltage) tested and inspected before shipping.

Physical Characteristics

Colors	Black
Number of Conductors	3 Conductor
Wire Gauge	16AWG
Jacket	Heavy Duty SJT
Jacket Material	100% Virgin PVC - Polyvinyl Chloride
Jacket Fire Rating	VW-1
Strain Relief	Molded 100% Virgin PVC
Conductor Material	100% bare copper
Temperature Rating	-20 deg C to 105 deg C

Connectors

Connector A	IEC 60320 C14
Connector B	NEMA 5-15R
Connector B	NEMA 5-15R

Performance

Power Rating	13 Amp / 125 Volt
--------------	-------------------

Approvals/Product Support

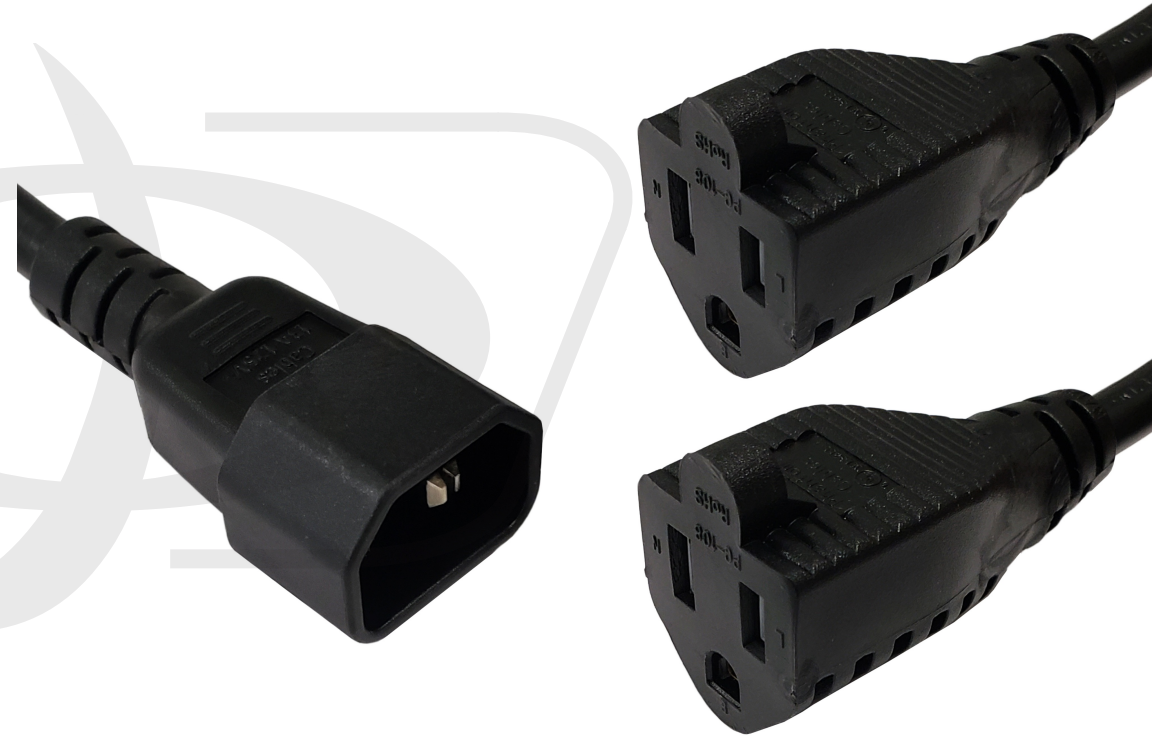
C14, 5-15R, Cable	c(UL)us
ISO	ISO 9001:2015, ISO 14000
RoHS/Reach/Conflict Minerals	Yes
Country of Origin	Vietnam

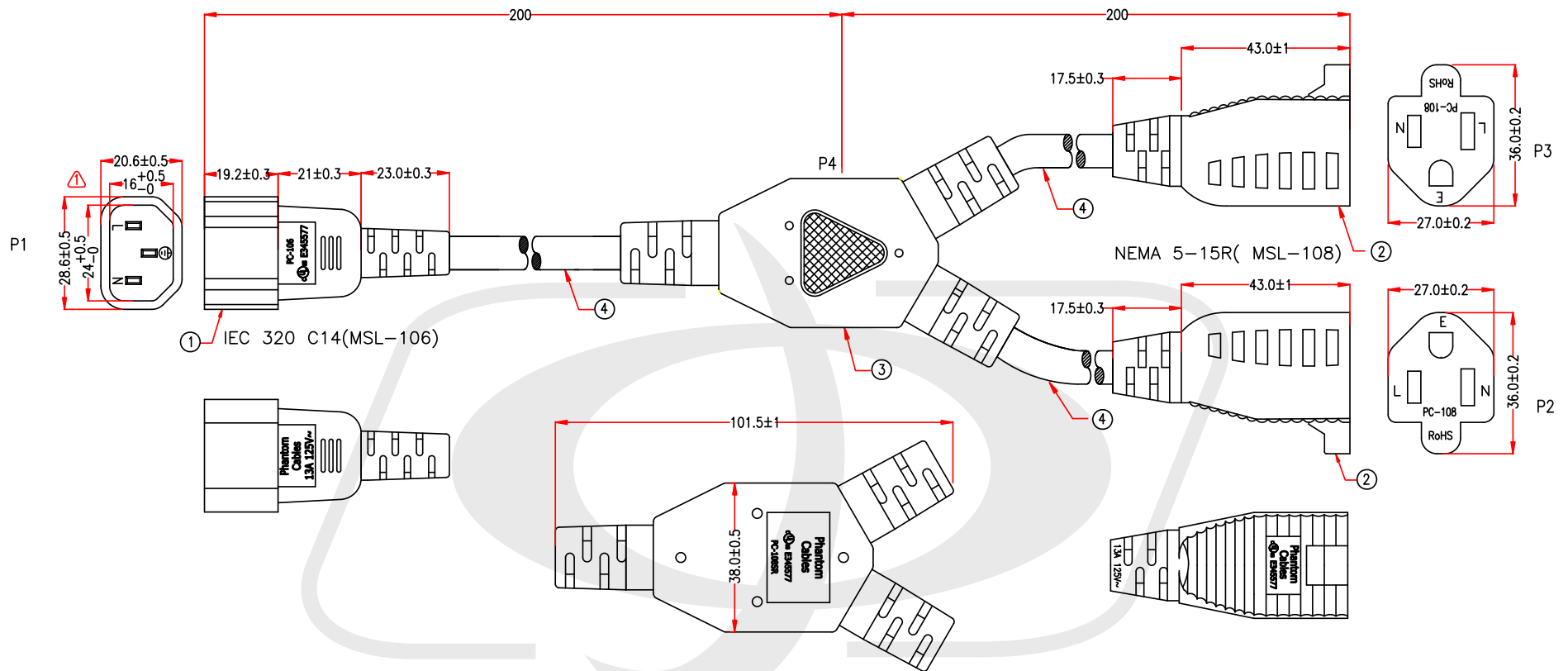
Packaging Information

Package Quantity	1
Product Weight	0.46 lbs [0.2kg]

Warranty Information

Warranty	Limited Lifetime
----------	------------------





MARKING:

Phantom Cables c(UL)us E345578 SJT 3/C 16AWG(1.31mm²) 105°C 300V VW-1

	P1	P2	P3
BLACK	L	L	L
WHITE	N	N	N
GREEN	E	E	E

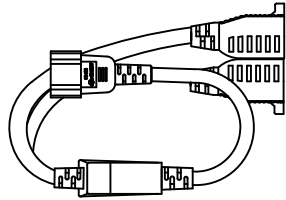
Cable Length
Unless Other Spec.

Tolerances:

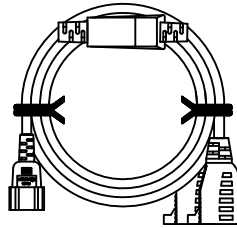
0 ~200mm	±10mm
201~1000mm	±20mm
1001 ~1500mm	±25mm
1501~2100mm	±30mm
2100mm↑	±40mm

THE CABLE MARKING IS CONCAVE LETTERING MOULD

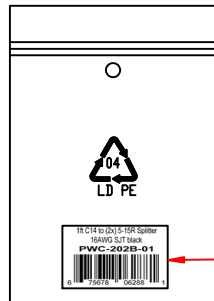
PACKING A: \leq 2FT



PACKING B: \geq 3FT

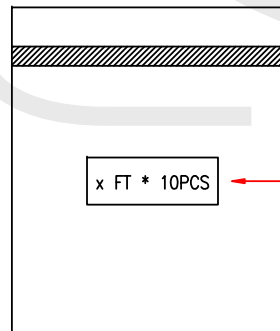


PACKING:
1PC IN A ZIP BAG

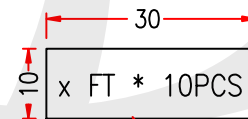


LABEL B

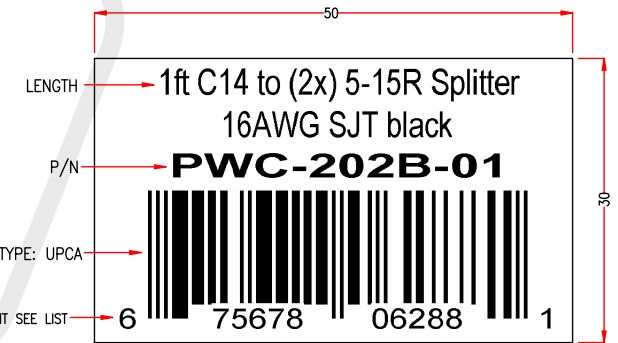
PACKING: 1-10FT
10PCS IN A BIG POLYBAG



LABEL A



LABEL A



LABEL B

*NOTE: All relevant materials are complied with RoHS directive .