



# 1ft NEMA L6-20P to NEMA L6-30R Power Cable - 12AWG - SJT (250V 20A)

PWC-169-01 - Specifications

**Description**

This power cord consists of a L6-20P male on one end and a L6-30R female on the other end. It is typically used as an adapter cable. These cables are constructed with UL mandated inner plastic frame molds to enhance terminal alignment and produce a high quality connector. The connectors premium quality ensures a snug fit with receptacles. Each assembly is 100% continuity tested and 100% HVT (High Voltage) tested and inspected before shipping.

**Physical Characteristics**

Color	Black
Length	1 foot [0.3m]
Number of Conductors	3 Conductor
Wire Gauge	12 AWG
Jacket	Heavy Duty SJT
Jacket Material	100% Virgin PVC - Polyvinyl Chloride
Jacket Fire Rating	VW-1
Strain Relief	Molded 100% Virgin PVC
Conductor Material	100% bare copper
Temperature Rating	-20 deg C to 105 deg C

**Connector(s)**

Connector A	NEMA L6-20P
Connector B	NEMA L6-30R

**Performance**

Power Rating	20A 250V
--------------	----------

**Approvals / Environmental**

L6-30P	c(UL)us
L6-30R	c(UL)us
Cable	c(UL)us
ISO	ISO 9001:2015, ISO 14000
RoHS	Yes
Reach	Yes
Conflict Minerals	Yes

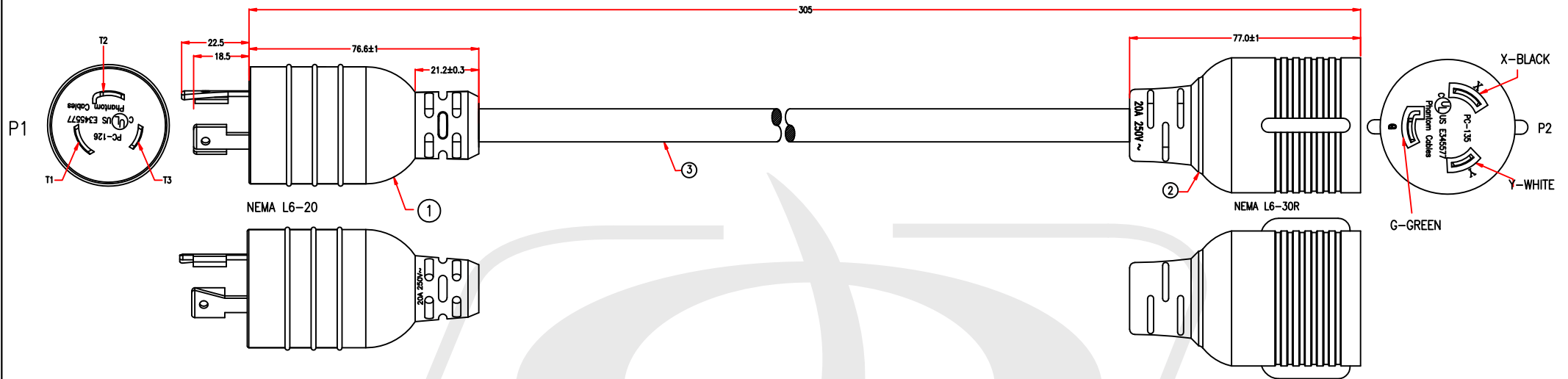
**Warranty Information**

Warranty	Limited Lifetime
----------	------------------



# 1ft NEMA L6-20P to NEMA L6-30R Power Cable - 12AWG - SJT (250V 20A)

PWC-169-01 - Line Drawing



THE MARKING IS CONCAVE LETTERING MOULD

Phantom Cables c(UL)us E345578 SJT 3/C 12AWG(3.31mm<sup>2</sup>) 105°C 300V VW-1

P1,P2: c(UL)us E345577

NOTE: All relevant materials are complied with RoHS directive .

	P1		P2
BLACK	T3	_____	X
WHITE	T1	_____	Y
GREEN	T2	_____	G

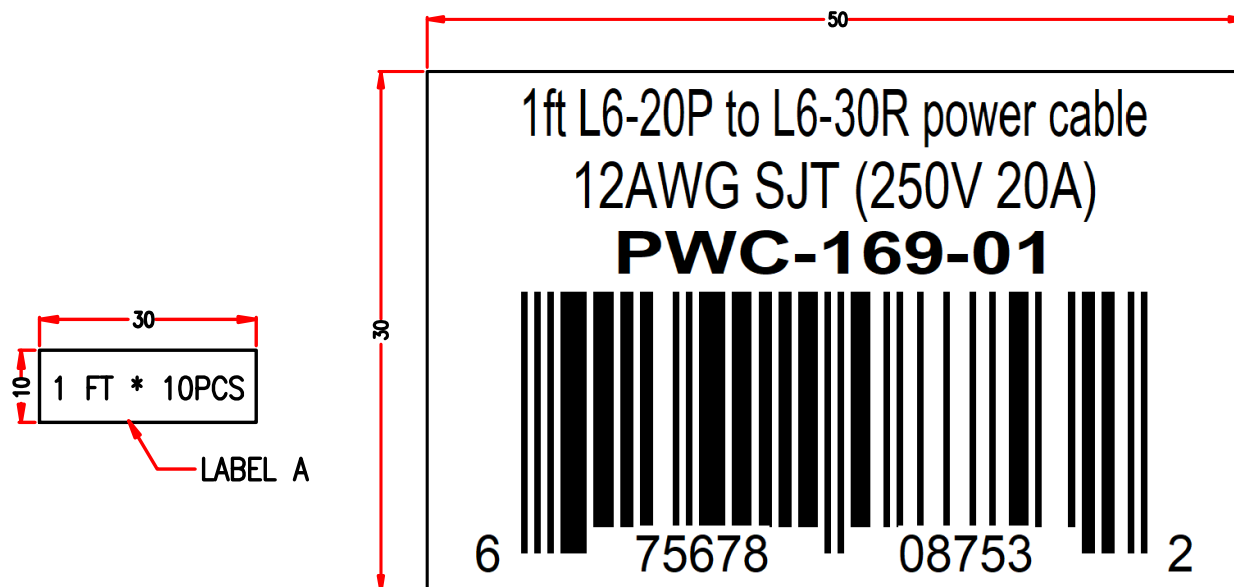
**Tolerances:**

0 ~200mm	±10mm
201~1000mm	±20mm
1001 ~1500mm	±25mm
1501~2100mm	±30mm
2100mm↑	±40mm

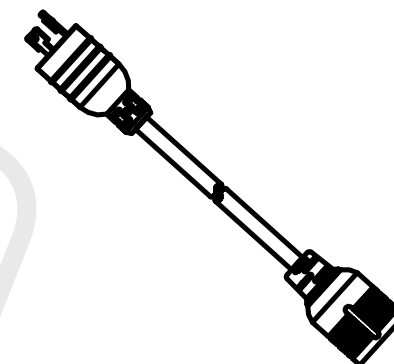


# 1ft NEMA L6-20P to NEMA L6-30R Power Cable - 12AWG - SJT (250V 20A)

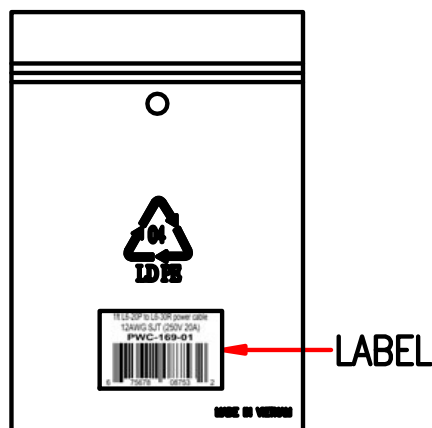
PWC-169-01 - Packaging Information



PACKING :



PACKING:  
1PCS IN A ZIP BAG



PACKING: 1-10FT  
10PCS IN A BIG POLYBAG

