



1ft NEMA L6-30P to NEMA L6-20R Power Cable - 12AWG - SJT (250V 20A)

PWC-1685-01 - Specifications

Description

This power cord consists of a L6-30P male on one end and a L6-20R female on the other end. It is typically used as an adapter cable. These cables are constructed with UL mandated inner plastic frame molds to enhance terminal alignment and produce a high quality connector. The connectors premium quality ensures a snug fit with receptacles. Each assembly is 100% continuity tested and 100% HVT (High Voltage) tested and inspected before shipping.

Physical Characteristics

Color	Black
Length	1 foot [0.3m]
Number of Conductors	3 Conductor
Wire Gauge	12 AWG
Jacket	Heavy Duty SJT
Jacket Material	100% Virgin PVC - Polyvinyl Chloride
Jacket Fire Rating	FT2, VW-1
Strain Relief	Molded 100% Virgin PVC
Conductor Material	100% bare copper
Temperature Rating	-20 deg C to 105 deg C

Connector(s)

Connector A	NEMA L6-30P
Connector B	NEMA L6-20R

Performance

Power Rating	20 Amp / 250 Volt
--------------	-------------------

Approvals / Environmental

L6-20P	c(UL)us
L6-30R	c(UL)us
Cable	c(UL)us
RoHS	Yes
Reach	Yes
Conflict Minerals	Yes

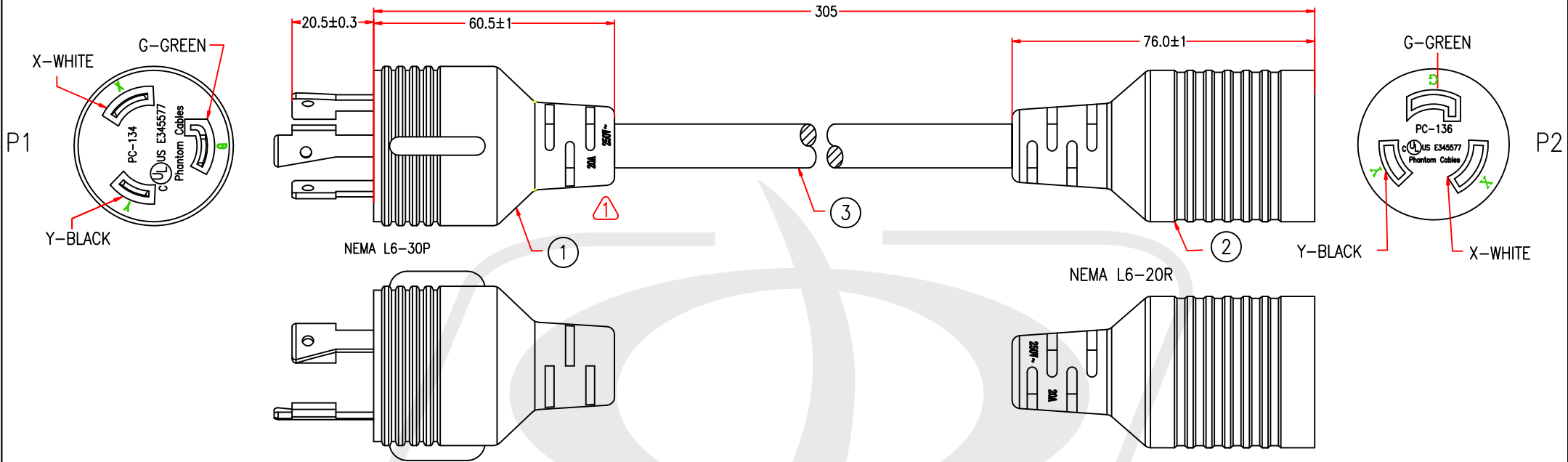
Warranty Information

Warranty	Limited Lifetime
----------	------------------



1ft NEMA L6-30P to NEMA L6-20R Power Cable - 12AWG - SJT (250V 20A)

PWC-1685-01 - Specifications



THE MARKING IS PROTRUDING LETTERING MOULD:

Phantom Cables c(UL)us E345578 SJT 3/C 12AWG(3.31mm²) 105°C 300V VW-1

	P1	P2
BLACK	Y	Y
WHITE	X	X
GREEN	G	G

Tolerance

>0±0.30

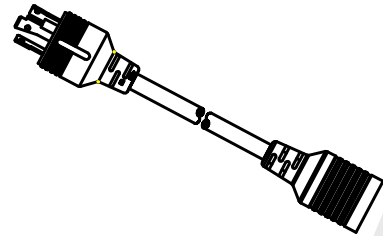
>1.0±0.50

>10.0±1.0

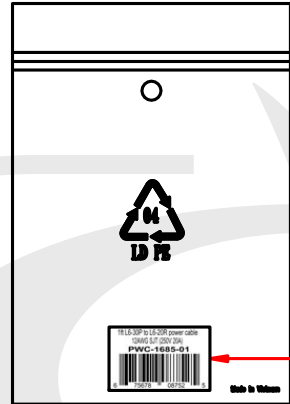
>20.0±2.0

Angle: ±1°

PACKING :

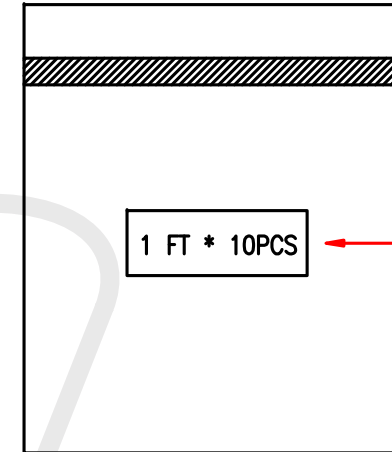


PACKING:
1PCS IN A ZIP BAG

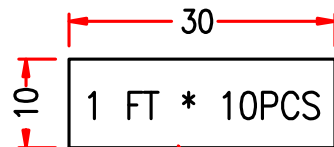


LABEL

PACKING:
10PCS IN A BIG POLYBAG



LABEL A

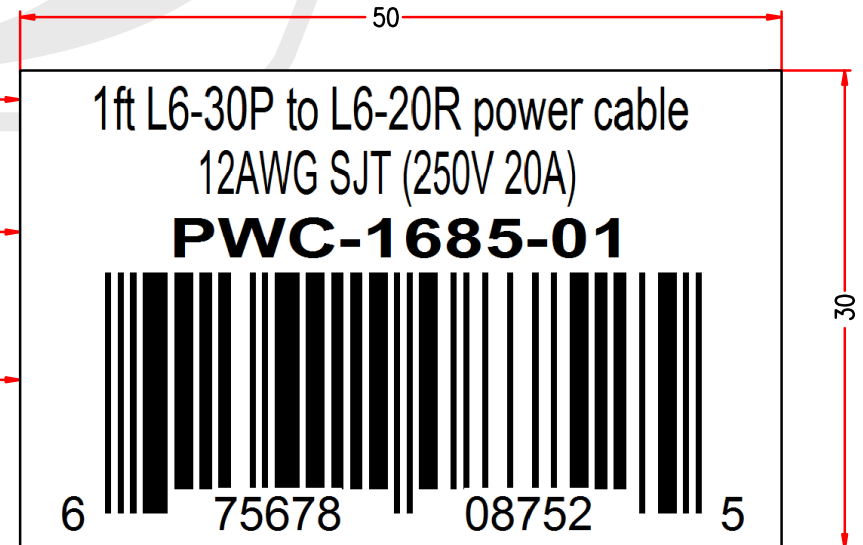


LABEL A

LENGTH

P/N

BARCODE TYPE: UPCA



LABEL