



NEMA 5-15P to IEC C5 Power Cable - 18AWG

PWC-116-xx - Specifications

Description

This power cord consists of a 5-15P male on one end and a C5 female on the other end. It is typically used to connect a wall outlet to a AC/DC power supply or directly to equipment. These cables are constructed with UL mandated inner plastic frame molds to enhance terminal alignment and produce a high quality connector. The connectors premium quality ensures a snug fit with receptacles. Each assembly is 100% continuity tested and 100% HVT (High Voltage) tested and inspected before shipping.

Physical Characteristics

Color	Black
Lengths Available	3ft / 6ft / 12ft
Number of Conductors	2 Conductor
Wire Gauge	18 AWG
Jacket	Heavy Duty SJT
Jacket Material	100% Virgin PVC - Polyvinyl Chloride
Jacket Fire Rating	VW-1
Strain Relief	Molded 100% Virgin PVC
Conductor Material	100% bare copper
Temperature Rating	-20 deg C to 105 deg C

Connector(s)

Connector A	NEMA 5-15P (3-prong)
Connector B	IEC 60320 C5

Performance

Power Rating	7 Amp / 125 Volt
--------------	------------------

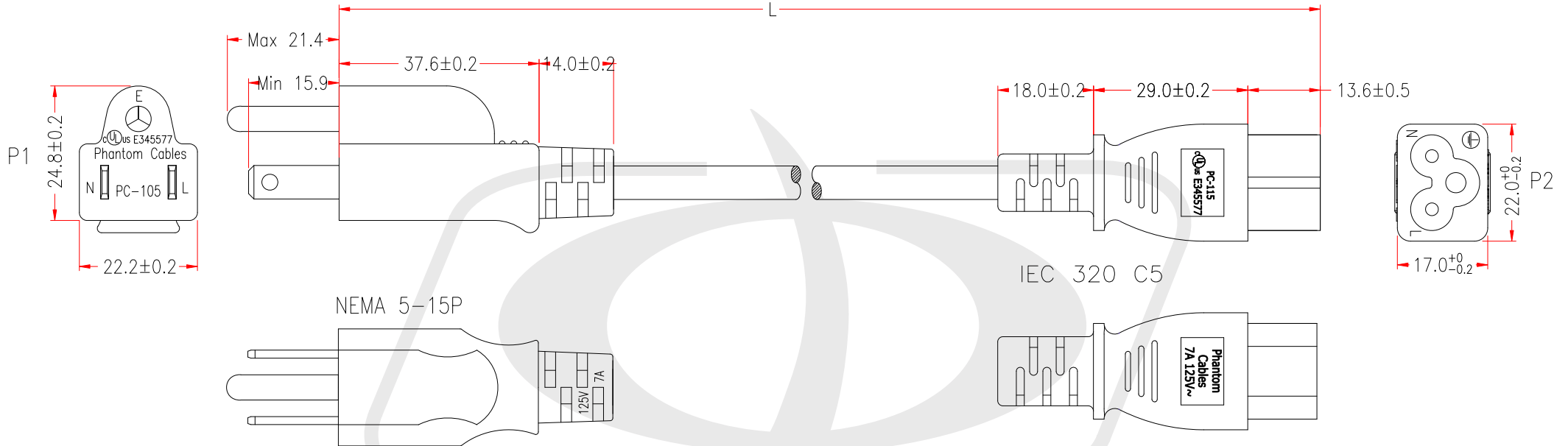
Approvals / Product Support

5-15P	c(UL)us
C5	c(UL)us
Cable	c(UL)us
RoHS, Reach	Yes
Conflict Minerals	Yes
Country of Origin	Vietnam

Warranty Information

Warranty	Limited Lifetime
----------	------------------





P1&P2: c(UL)us E345577

CABLE MARKING:

Phantom Cables c(UL)us E345578 SJT 3/C 18AWG(0.824mm²) 105°C 300V VW-1

	P1	P2
BLACK	L	L
WHITE	N	N
GREEN	E	E

THE CABLE MARKING IS CONCAVE LETTERING MOULD

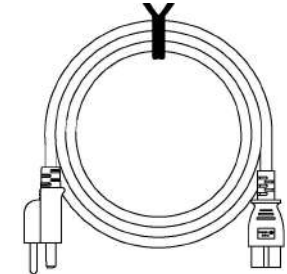
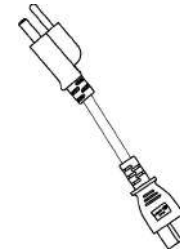
Cable Length
Unless Other Spec.

Tolerances:

0 ~200mm	±10mm
201~1000mm	±20mm
1001 ~1500mm	±25mm
1501~2100mm	±30mm
2100mm↑	±40mm

PACKING A: $\leq 1\text{FT}$

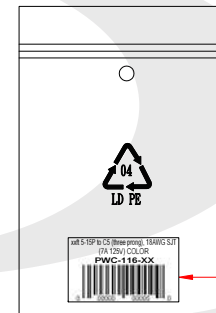
PACKING B: $\geq 2\text{FT}$



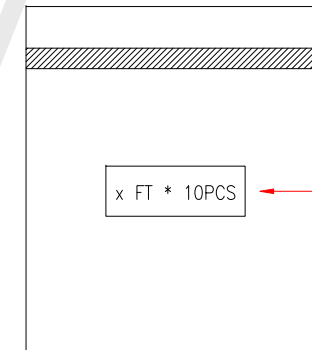
P/N	LENGTH(Lmm)	UPC
PWC-116-03	915mm	675678060252
PWC-116-06	1830mm	675678060269
PWC-116-12	3655mm	675678060276

PACKING:
1PCS IN A ZIP BAG

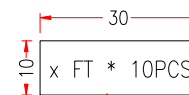
PACKING: 1-10FT
10PCS IN A BIG POLYBAG



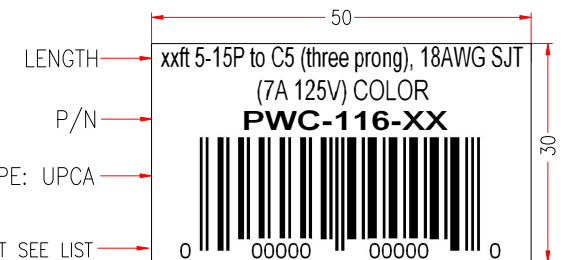
LABEL



LABEL A



LABEL A



BARCODE TYPE: UPCA

BARCODE CONTENT SEE LIST

LABEL

*NOTE: All relevant materials are complied with RoHS directive .