



8-Port XLR Female + 8-port XLR Male patch panel, 19 inch rackmount 1U

PP-XLR-8F8M - Specifications

Description

This 8 port XLR patchbay has eight XLR male and eight locking XLR female connectors on the front and solder connectors on the back. It is meant to be mounted on a 19" rack or cabinet and used as a in/out snake patch panel.

Physical Characteristics

Color	Black Powder Coated
Material	Steel
Connector Type	8 - XLR Male 8 - Locking XLR Female
Ports	16
Product Dimensions	19" W x 1.75" H [48 cm W x 4.45 cm H]
Rackmountable	Yes, 19" Rack or Cabinet

Environmental

RoHS	Yes
------	-----

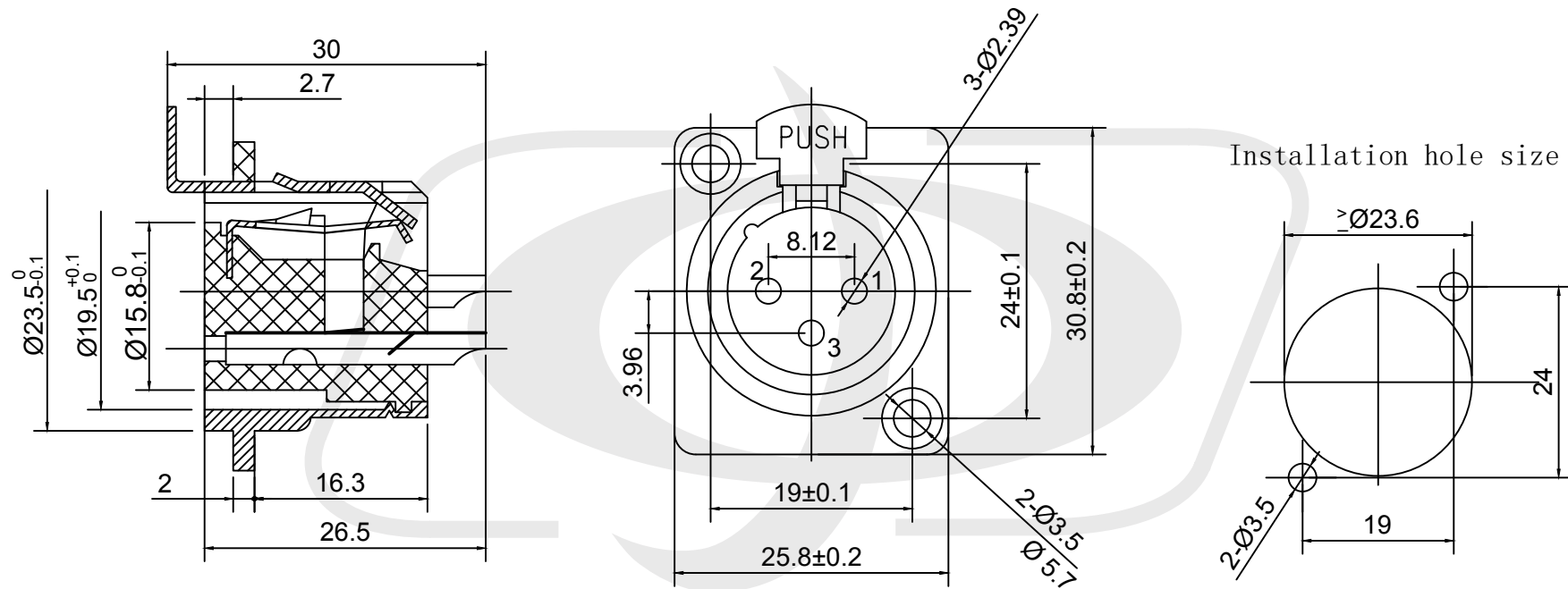
Packaging Information

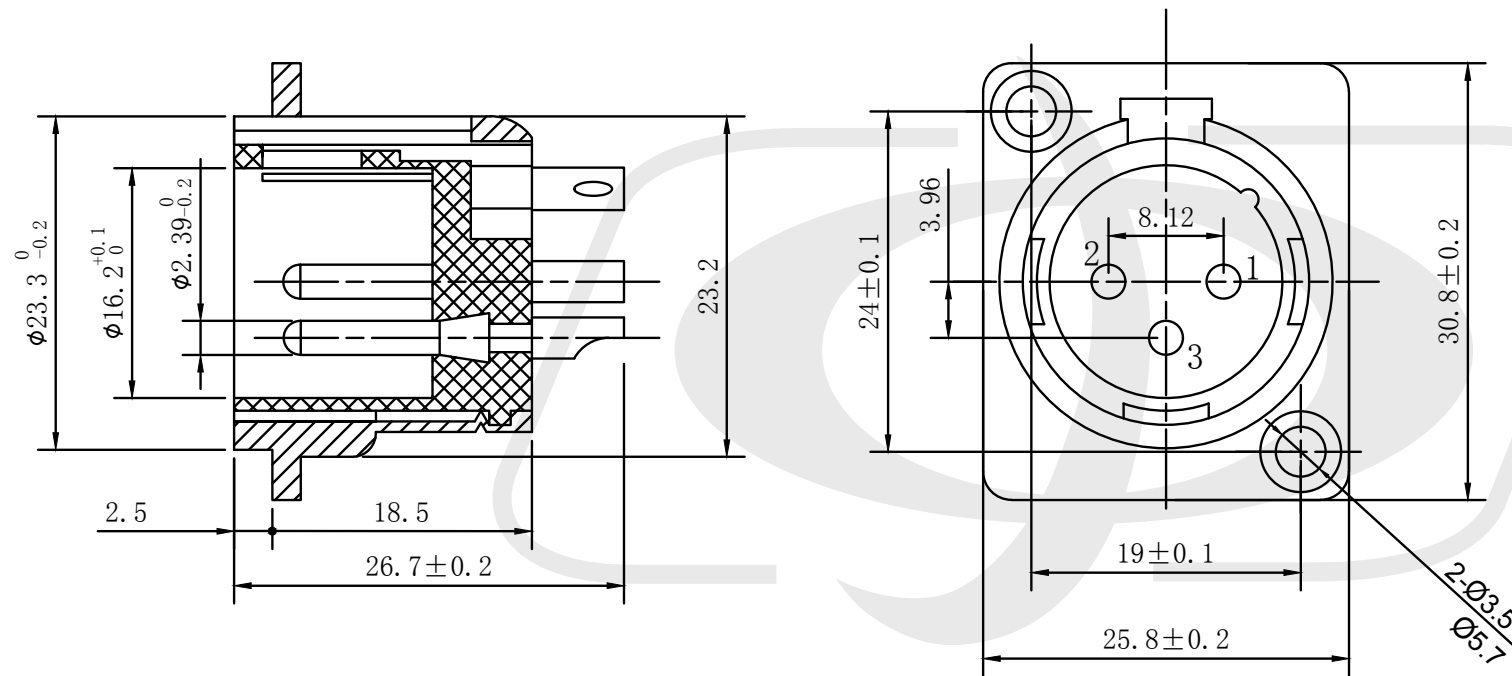
Package Quantity	1 - Patch Panel
Product Weight	1.6 lbs [0.73 kg]



Built from components:

- PP-XLR16-UL
- WP-IN-XLRF-L
- WP-IN-XLRM





Mounting hole size

