



16-Port speakON patch panel, 19 inch rackmount 1U

PP-SPK-16 - Specifications

Description

This 16 port speakON patchbay has 4-pole speakON connectors on the front and solder connectors on the back. It is meant to be mounted on a 19" rack or cabinet.

Physical Characteristics

Color	Black Powder Coated
Material	Steel
Connector Type	4-Pole speakON
Ports	16
Product Dimensions	19" W x 1.75" H [48 cm W x 4.45 cm H]
Rackmountable	Yes, 19" Rack or Cabinet



Environmental

RoHS	Yes
------	-----

Packaging Information

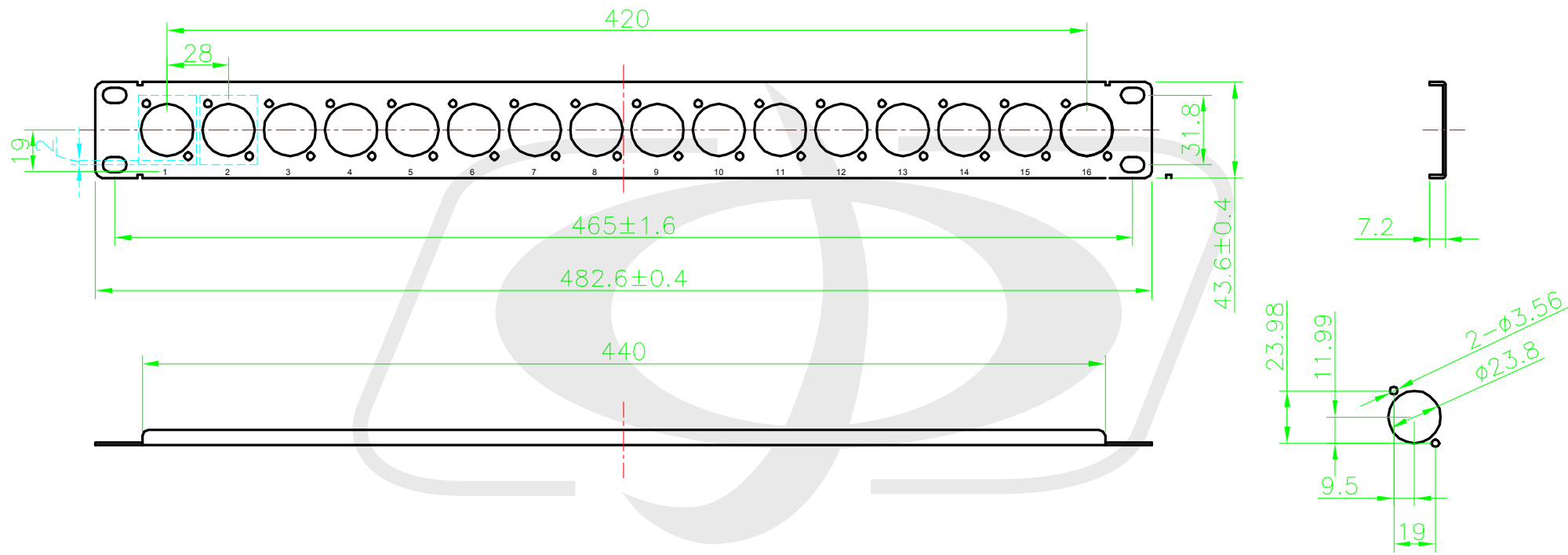
Package Quantity	1 - Patch Panel
Product Weight	1.6 lbs [0.73 kg]

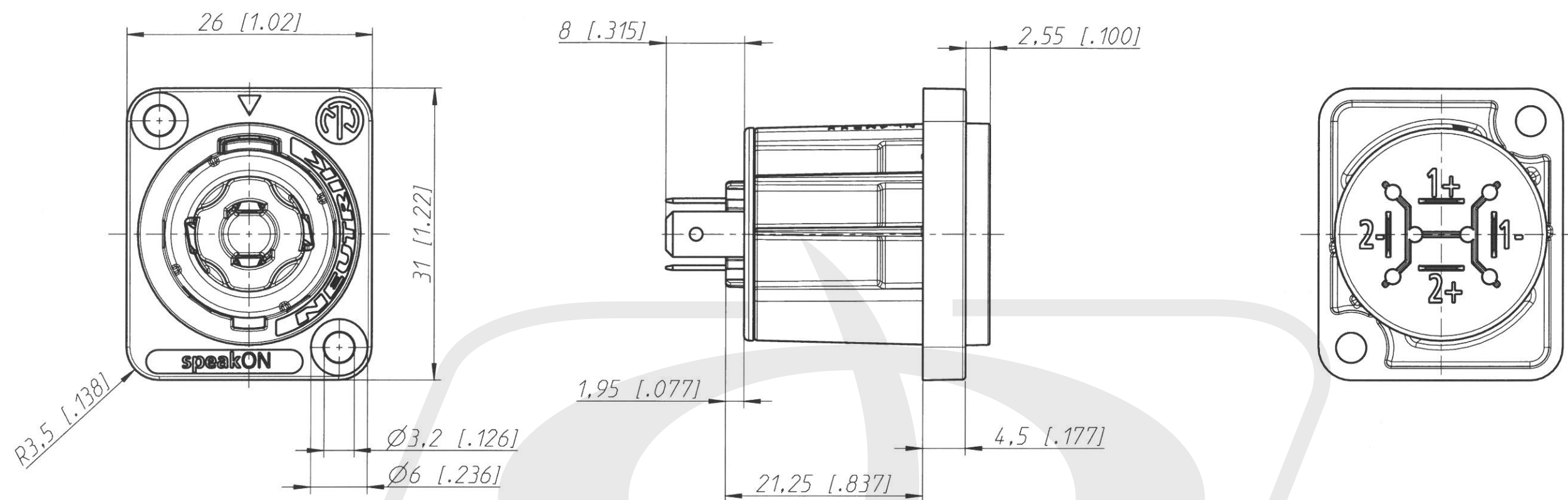
Built from components:
PP-XLR16-UL
NT-NL4MPXX



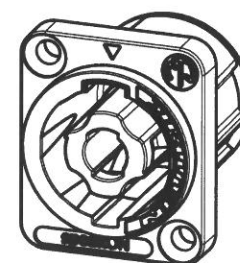
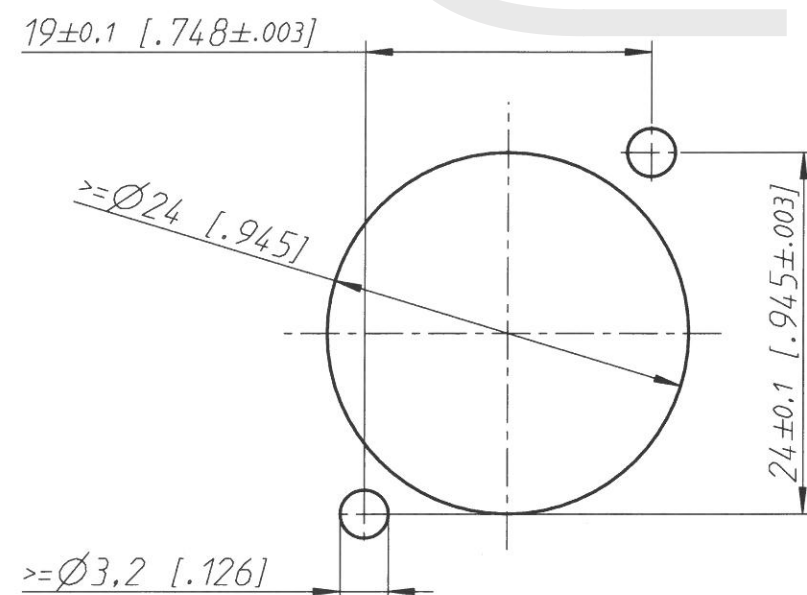
16-port D-cut Patch Panel, 19 inch Rackmount 1U - Unloaded

PP-XLR16-UL - Line Drawing





Frontplattenausschnitt Rückseite
panel cutout rearside



1:1

General tolerances ISO 2768-m		Scale 2:1 (A3)		Date	Name
Refer to protection notice ISO 16016.			Drawn	18.10.19	Hofmann
Name - NL4MPXX			Modified	-	-
			Change-No.	Sheet-No.	Index
			-	1 / 1	-
			Replacement for:		
NEUTRIK			Drawing-No.		
			20002406		

NEUTRIK