



16-Port 50 Ohm BNC Patch Panel, 19 inch Rackmount 1U

PP-BNC50-16 - Specifications

Description

This 16 port BNC patch panel has 50 ohm BNC female to female feed-through couplers on both ends. It is meant to be mounted on a 19" rack or cabinet and provides an easy method to couple BNC cables.

Physical Characteristics

Color	Black Powder Coated
Material	Steel
Ports	16
Rack Space	1U
Product Dimensions	19" W x 1.75" H [48 cm W x 4.45 cm H]
Rackmountable	Yes, 19" Rack or Cabinet



Connectors

Front	16 - BNC 50 Ohm Female
Rear	16 - BNC 50 Ohm Female

Built from components:
PP-BNC16-UL
AD-3131-50

Environmental

RoHS	Yes
------	-----

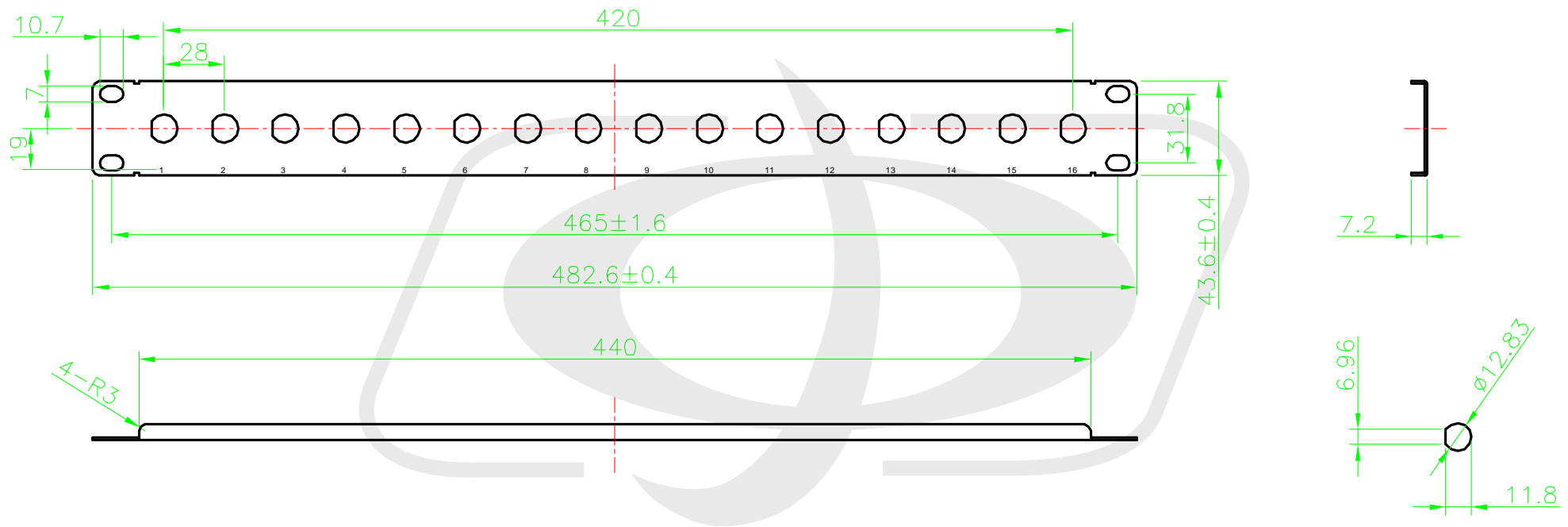
Packaging Information

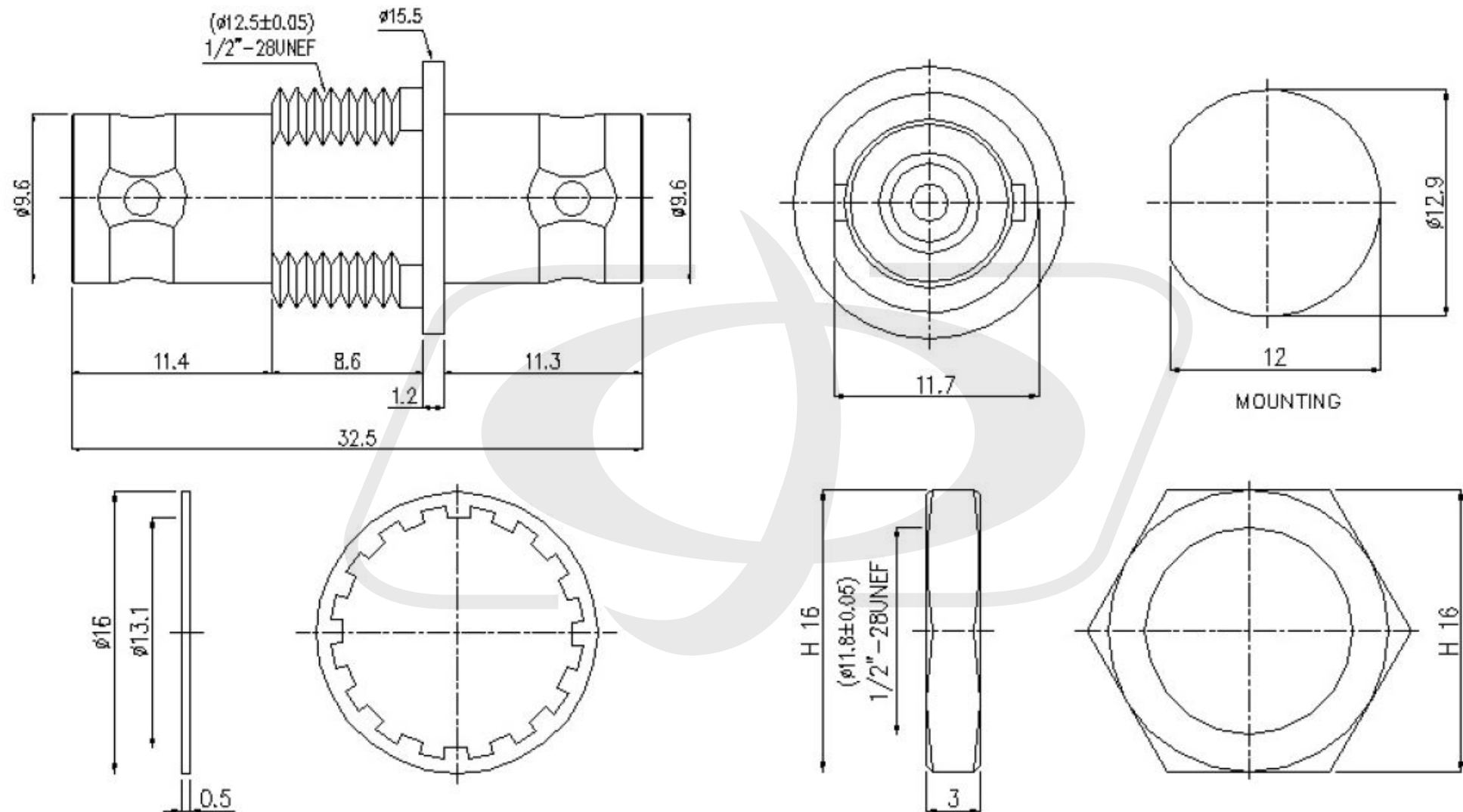
Package Quantity	1 - Patch Panel
Product Weight	1.7 lbs [0.77 kg]



16-port BNC Patch Panel, 19 inch Rackmount 1U - Unloaded

PP-BNC16-UL - Line Drawing





Tolerance

x.	± 0.2
xx.	± 0.1
xxx.	± 0.05
Angle	$\pm 0.5^\circ$