



# 16-Port 75 Ohm BNC 12GHz HD-SDI patch panel, 19 inch rackmount 1U

## PP-BNC-16-12G - Specifications

### Description

This 16 port BNC patch panel has 75 ohm 12GHz BNC female to female feed-through couplers on both ends. It is meant to be mounted on a 19" rack or cabinet and provides an easy method to couple BNC cables.

### Physical Characteristics

Color	Black Powder Coated
Material	Steel
Ports	16
Rack Space	1U
Product Dimensions	19" W x 1.75" H [48 cm W x 4.45 cm H]
Rackmountable	Yes, 19" Rack or Cabinet



### Connectors

Front	16 - BNC 75 Ohm 12GHz Female
Rear	16 - BNC 75 Ohm 12GHz Female

### **Built from components:**

PP-BNC16-UL

AD-3131-SDI-12G

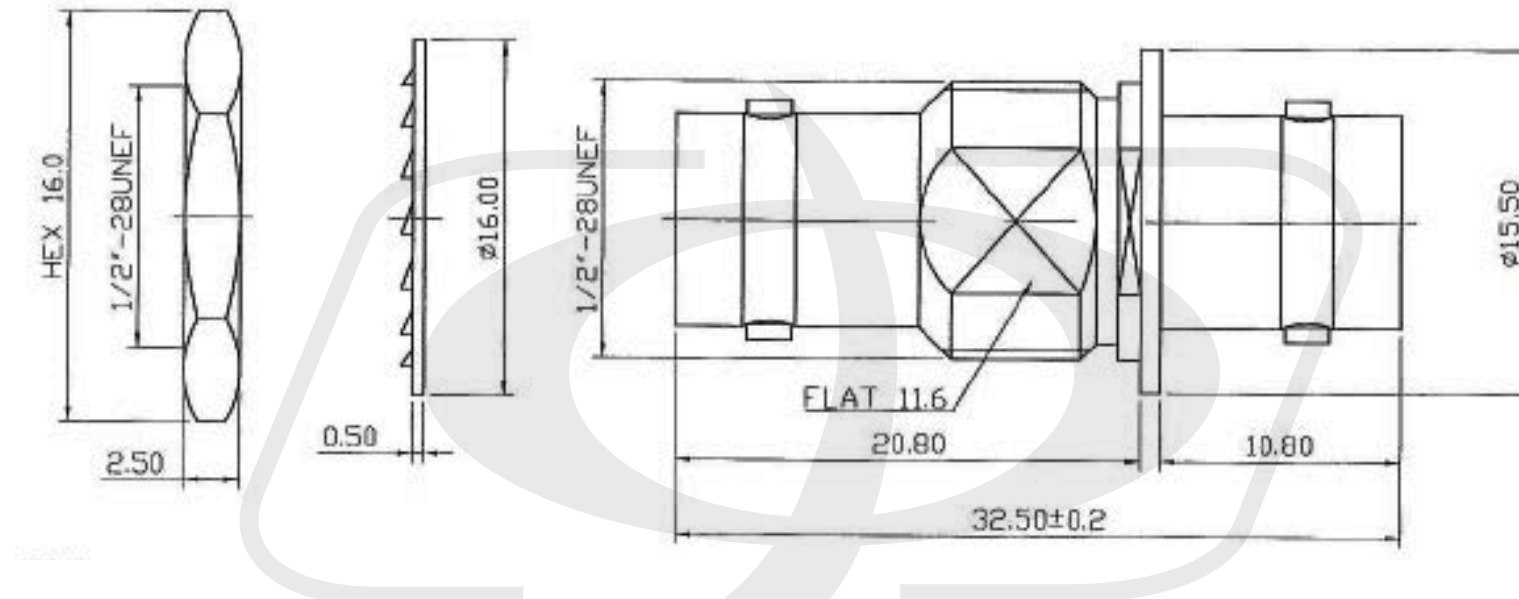
### Environmental

RoHS	Yes
------	-----

### Packaging Information

Package Quantity	1 - Patch Panel
Product Weight	1.7 lbs [0.77 kg]





**Tolerance**

x.	±0.2
xx.	±0.1
xxx.	±0.05
Angle	±0.5°