



# 24-Port CAT6A Patch Panel, 19" Rackmount 1U - 110 Punch-Down

PP-24C6A-110 - Specifications

## Description

This 24 port Cat6A 1U patch panel has RJ45 female ports on the front and 110 punch-down style terminals on the rear. It is meant to be mounted on a 19" rack or cabinet and provides an easy method to terminate raw Cat6A runs.

## Physical Characteristics

Color	Black Powder Coated
Material	Steel
Connector Type	Cat6A
Color Code	568A or 568B
Ports	24
Rack Space	1U
Product Dimensions	19" W 1.75" H [48 cm W, 4.45 cm H]
Rackmountable	Yes, 19" Rack or Cabinet

## Connectors

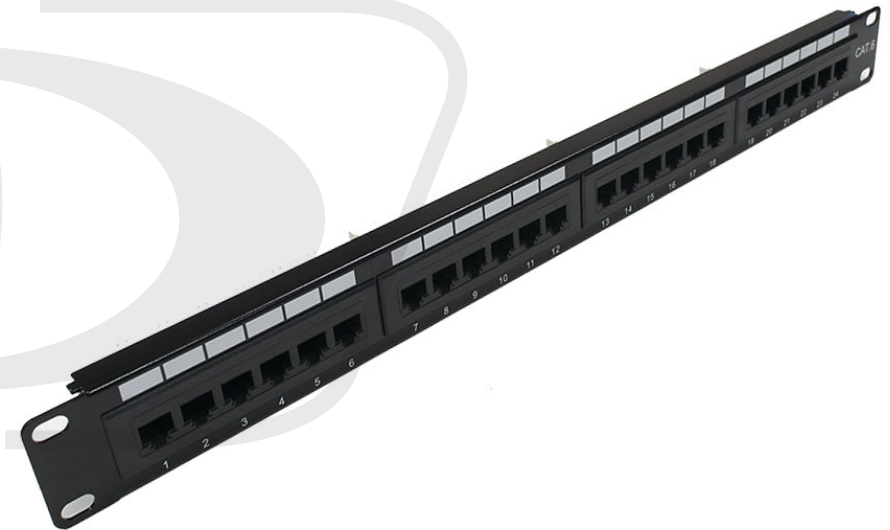
Front	24 - RJ45 CAT6A Female
Rear	24 x 4 Pair - 110 Style Punch-Down Terminations

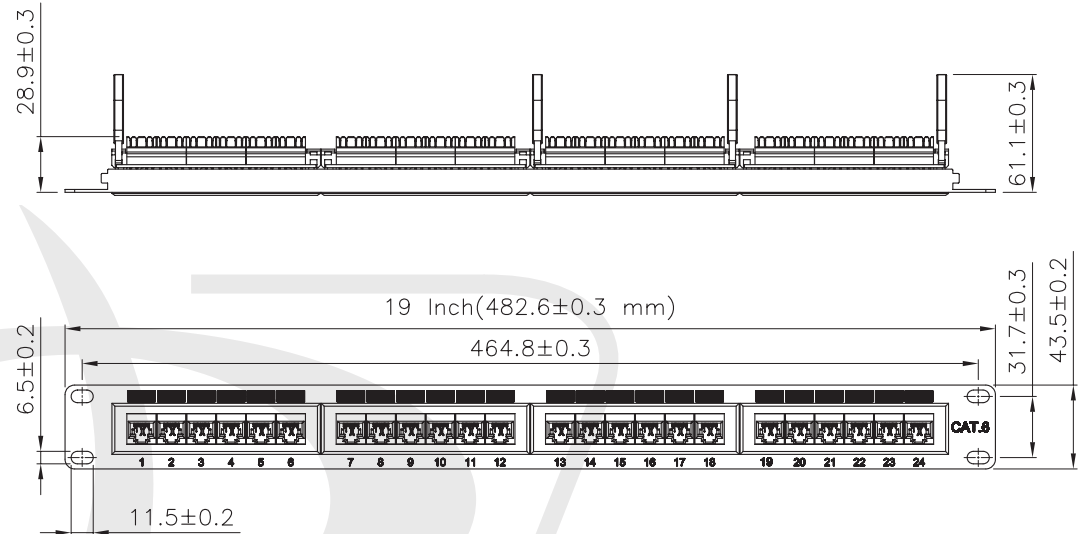
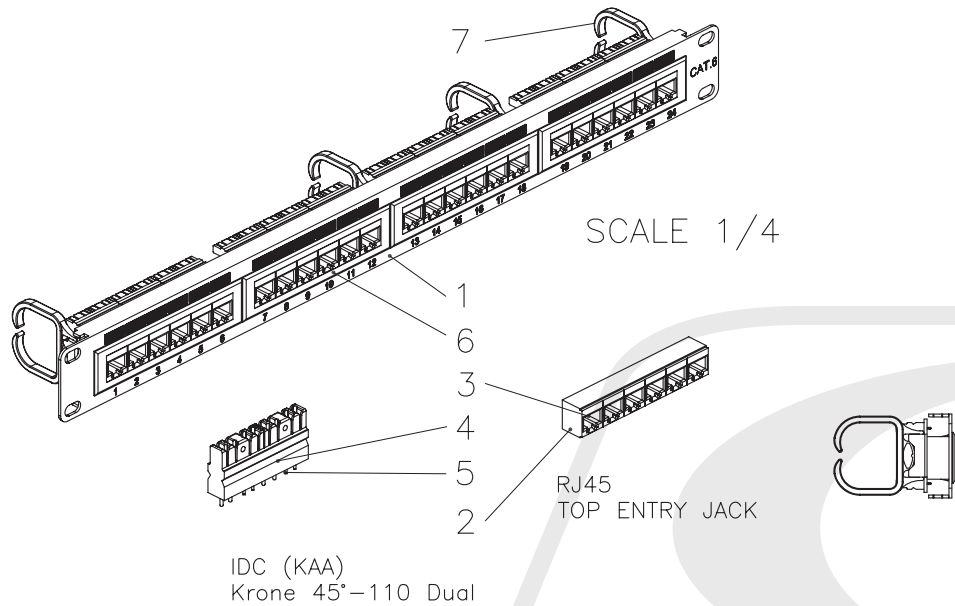
## Environmental

RoHS	Yes
------	-----

## Packaging Information

Package Quantity	1 - Patch Panel
Product Weight	1.35 lbs [0.61 kg]





### Specification :

#### Material :

1. Panel : SPCC, 1.5 mm thickness with Black(RAL9005) color painted.
2. RJ45 Jack Housing : ABS, UL 94V-0.
3. RJ45 Jack Contact material & finished :  
3-1. Phosphor Bronze with 50-60 micro-inch Nickel plated.  
3-2. Contact area : Min. 3 mm 50 micro-inch Gold plated.
4. IDC Housing : PC+5%GF, UL 94V-2.
5. IDC Terminal material & finished :  
5-1. Phosphor Bronze with 50-60 micro-inch Tin plated.  
5-2. 110 & Krone tool compatible.  
5-3. Suitable for 22-26 AWG stranded & solid wire.
6. Jack Bracket Set : ABS, UL 94V-0.
7. Cable Holder : PA6, UL 94 V-2.

