

1 Description

- The products illustrated in this manual, may or may not be identical to the products purchased. They are used for illustration purposes only.
- The PoE switch and ethernet switch installation methods are the same for installation purposes.

2 Packing List

- Switch (see the product label for model details)
- Power Cable
- Power Adapter (used with some products only)
- Brackets and screws (used with some products only)
- User manual and QC card

3 Installation Precautions

- Do not install the equipment in dusty, wet or damp environments.
- Ensure the environment where the equipment is installed is well ventilated, and does not block the vent holes on the switch.
- If installing in a rack which is a very warm environment, make sure to leave at least 1U of separation for proper airflow.
- Do not plug in aerial cabling unless properly grounded to avoid damage to the switch.
- Operating temperature and humidity depend on the specific product.

4 Safety Precautions

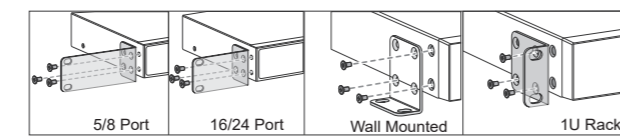
- Do not look directly into the optical port of the switch. The port emits a laser beam which can cause eye damage.
- Have the switch in the off position before plugging into power.
- Always use static protection during the installation and maintenance of equipment.
- Do not place objects on top of the switch.

P1

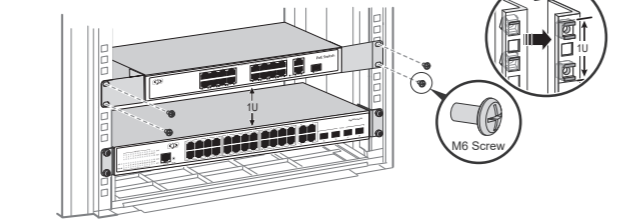
5 Switch Installation

Switches support a variety of installation methods: desktop, wall mounted and rack mounted. See installation details below.

▲ Mounting Ear Installation



▲ Rack Mount Installation



P2

6 Connecting Equipment

▲ Network Cable

1. CAT5E / CAT6 UTP or FTP cabling can be used to connect devices depending on your network setup.

▲ Grounding

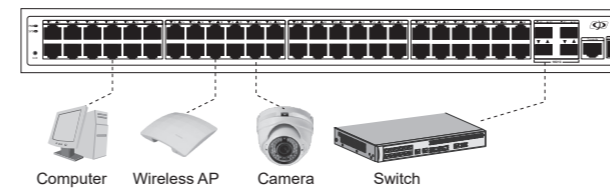
1. If your switch comes with a grounding screw, ensure that it is properly grounded to protect the safety of the equipment connected to it.

▲ Optical Fiber

1. Optical fibers must be used with the optical modules.
2. Fiber bending radius must not be less than 40 mm.

▲ Power Cable

1. Maintain a minimum distance of 10cm between the power cable and network cables.



P3

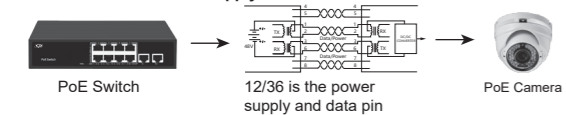
7 Indicator Definition

Indicator	Definition	State	Description
PWR	Power Indicator	Light on Light off	Powered Abnormal
SYS	System Indicator	Light on Flash	System Normal System Starting
PoE	PoE Indicator	Light on Light off	PoE Powered No PoE Powered
1000M	Link Rate	Light on Light off	Gigabit 10/100M
100M	Link Rate	Light on Light off	100M Link Disconnect
Link/ACT	Link &Data	Light on Flash	Link is Normal Data Transmission

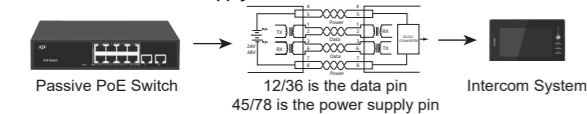
P4

8 PoE Powered Function

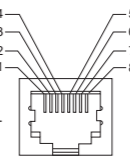
▲ Standard PoE Power Supply



▲ Passive PoE Power Supply



- Standard PoE power supply includes: protocol detection, power pin sequence detection, power output, abnormal protection and link abnormal monitoring.
- The PoE power supply protocol includes: IEEE802.3af (15.4W), IEEE802.3at (30W), IEEE802.3bt (60/90W).
- The standard PoE power pin sequence is 12+/36-, and the passive PoE power pin sequence is 45+/78-.
- Standard POE switches can automatically detect and supply power to the PDs that meet the standard, non-POE devices are not powered and only transmit data.
- Passive PoE switches use mandatory power supply mode. Non-PoE powered devices may be burned out, please use with caution.
- 24V POE switches have both low-voltage power supply and PD detection technology, which can provide 24V voltage on 45/78 pin. Even if it is connected to non-standard equipment, it will not burn out.



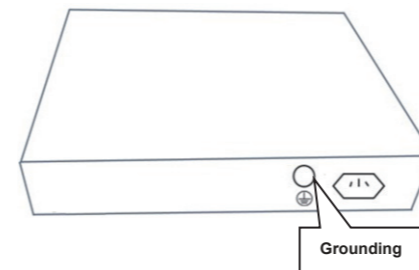
P6

9 States of Switch

Function	Definition	State	Description
Extend	Link Extension	Flash	Designated port link extended to 250 meters
Default	Normal Mode	Light off	All ports can communicate with each other
Reset	Reset Button	Flash	Short press restart, long press more than 5 seconds reset configuration
AI PoE	PoE Watchdog	/	PDs crashed and restart automatically
Max	Power Display Indicator	Green	PoE Power outputs≤25%
		Yellow	PoE Power outputs≤50%
		Orange	PoE Power outputs≤75%
		Red	PoE Power output≥75%

P7

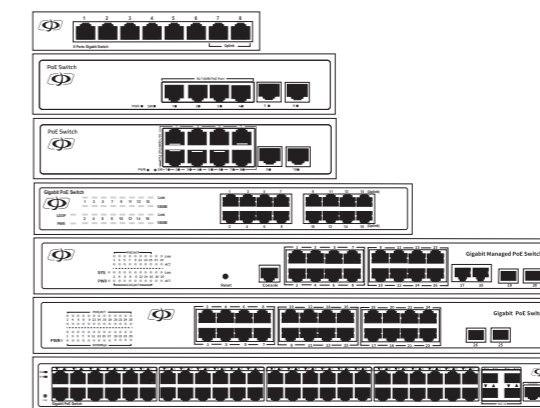
10 Safety Caution:



- The product earthing terminal on metal enclosure outside surface shall be permanently grounding.
- The equipment shall be installed by a skilled person or professional person.
- Do not cover ventilation openings. This equipment is not intended to be used on soft support (like beddings, blankets etc.)
- Disconnect the power cord from mains before cleaning the product.
- The product shall be inaccessible by ordinary person and located in a restricted area.

P8

Commercial Series Switches



User Manual