



# FASTCONNECT SC SM UPC Blue Connector - Pack of 6

## FO-FAST-SC-SM-xx - Specifications

**Description**

This device is an innovative, translucent wedge enabling the use of a common VFI to provide a "pass/fail" signal once physical contact is achieved.

**Features**

- No Epoxy, No Polish
- Low Insertion Loss
- Fiber Can Be Reinserted up to Three Times
- 3.0 mm, 2.0 mm and 900 µm Cordage Compatibility
- VFI Accessory to Confirm Proper Installation

**Applications**

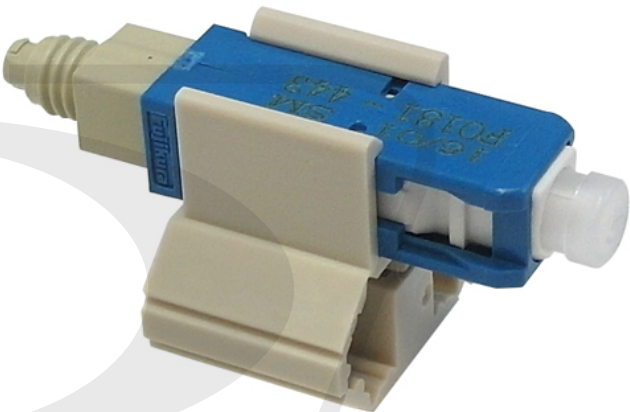
- Premise/Enterprise Networks
- LAN/WAN Connections
- Patch Panels
- Equipment Termination
- FTTx Applications
- Field Repair/Replacement
- Equipment Test Leads

**Physical Characteristics**

Color	Blue
Cable Diameter	900 µm
Fiber Size	9/125 micron
Fiber Type	Singlemode
Operating Temperature	-40°C to +75°C
Fiber Classification	UPC

**Connector**

Connector	SC Simplex Male
-----------	-----------------



**Performance**

Insertion Loss	Average: 0.2 dB, Maximum: 0.5 dB
Return Loss	Average: -55 dB, Maximum: -45 dB

**Package Information**

Package Quantity	6
Product Weight	0.18 lbs