



# FASTCONNECT SC MM OM2 Black Connector - Pack of 6

## FO-FAST-SC-MM50-xx- Specifications

### Description

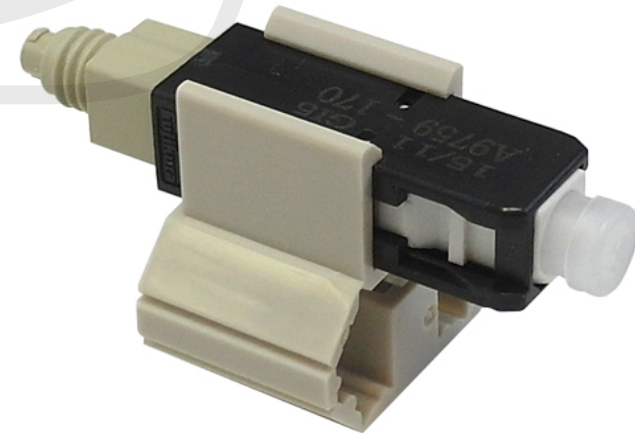
These fiber optic FASTConnect field-termination LC connectors are factory pre-polished, field-installable connectors that completely eliminate the need for hand polishing in the field. Proven mechanical splice technology ensuring precision fiber alignment, a factory pre-cleaved fiber stub and a proprietary index-matching gel combine to offer an immediate low loss termination on 50 micron multimode optical fibers. FAST Connectors are compatible with 900 µm optical fibers, as well as 2 mm and 3 mm cordage (2mm and 3mm boots sold separately). The connectors are color coded per industry standard requirements to aide in identification during and after installation. A factory-installed wedge clip (included with each connector) is removed and discarded upon completion of the termination. Incorporated into this device is an innovative, translucent wedge enabling the use of a common VFI to provide a "pass/fail" signal once physical contact is achieved.

### Features

- No Epoxy, No Polish
- Low Insertion Loss
- Fiber Can Be Reinserted up to Three Times
- 3.0 mm, 2.0 mm and 900 µm Cordage Compatibility
- VFI Accessory to Confirm Proper Installation

### Applications

- Premise/Enterprise Networks
- LAN/WAN Connections
- Patch Panels
- Equipment Termination
- FTTx Applications
- Field Repair/Replacement
- Equipment Test Leads





# 100 Pack FASTCONNECT LC MM OM3/4 Aqua Connector

FO-FAST-LC-MM50L-100 - Specifications

## Physical Characteristics

Color	Black
Cable Diameter	900µm
Fiber Size	50/125 micron
Fiber Type	Multimode
Operating Temperature	-40°C to +75°C
Fiber Classification	OM2

## Connector

Connector	SC Simplex Male
Performance	
Insertion Loss	Average: 0.1 dB, Maximum: 0.5 dB
Return Loss	Average: -25 dB, Maximum: -20 dB

## Package Information

Package Quantity	6
Product Weight	0.18 lbs