



FASTCONNECT LC MM OM2 Black Connector - Pack of 6

FO-FAST-LC-MM50-6 - Specifications

Description

This device is an innovative, translucent wedge enabling the use of a common VFI to provide a "pass/fail" signal once physical contact is achieved.

Features

- No Epoxy, No Polish
- Low Insertion Loss
- Fiber Can Be Reinserted up to Three Times
- 3.0 mm, 2.0 mm and 900 μm Cordage Compatibility
- VFI Accessory to Confirm Proper Installation

Applications

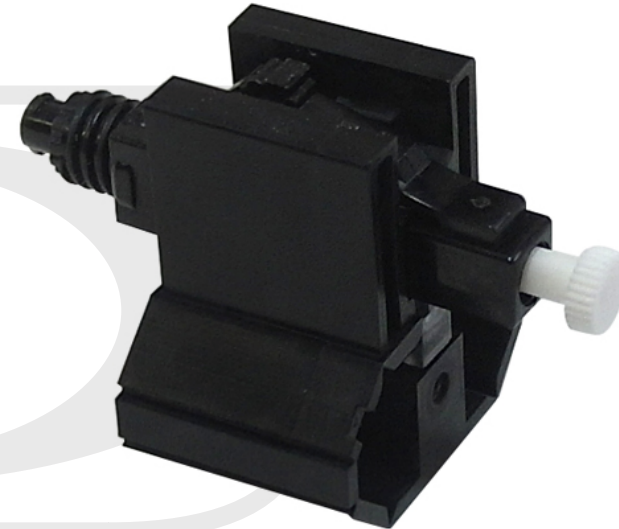
- Premise/Enterprise Networks
- LAN/WAN Connections
- Patch Panels
- Equipment Termination
- FTTx Applications
- Field Repair/Replacement
- Equipment Test Leads

Physical Characteristics

Color	Black
Cable Diameter	900 μm
Fiber Size	50/125 micron
Fiber Type	Multimode
Operating Temperature	-40°C to +75°C
Fiber Classification	OM2

Connector

Connector	LC Simplex Male
-----------	-----------------



Performance

Insertion Loss	Average: 0.1 dB, Maximum: 0.5 dB
Return Loss	Average: -25 dB, Maximum: -20 dB

Package Information

Package Quantity	6
Product Weight	0.18 lbs