



LC/SC Fiber Hybrid Coupler F/F Singlemode Simplex Ceramic, Blue

FO-AD609 - Specifications

Description

This coupler consists of a LC simplex female on one end and a SC simplex female on the other end. It is typically used to connect a LC simplex male cable to a SC simplex male cable.

Physical Characteristics

Color	Nickel/Blue
Housing	Metal/Plastic
Sleeve	Ceramic
Mounting Style	Panel Mount
Mode	Singlemode

Connectors

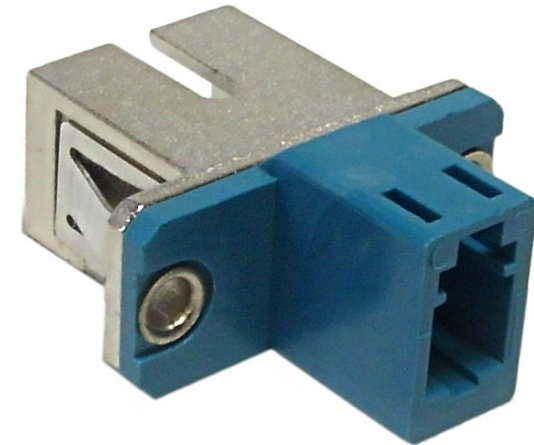
Connector A	LC Female Simplex
Connector B	SC Female Simplex

Performance

Insertion Loss	<0.2dB
----------------	--------

Packaging Information

Package Quantity	1
Product Weight	0.02 lbs [0.009 kg]





LC/SC Fiber Hybrid Coupler F/F Singlemode Simplex Ceramic, Blue

FO-AD609 - Line Drawing

