



SMA Reverse Polarity Female Bulkhead Crimp Connector for LMR-240 50 Ohm

CN-17-240 - Specifications

Description

This SMA female reverse polarity bulkhead crimp connector is meant to be terminated on LMR-240 bulk cable.

Physical Characteristics

Connector	SMA
Gender	Female
Body Style	Bulkhead
Polarity	Reverse
Cable Type	LMR-240
Connector Plating	Nickel
Contact Plating	Gold
Attachment Method	Crimp Sleeve, Crimp or Solder Pin

Performance

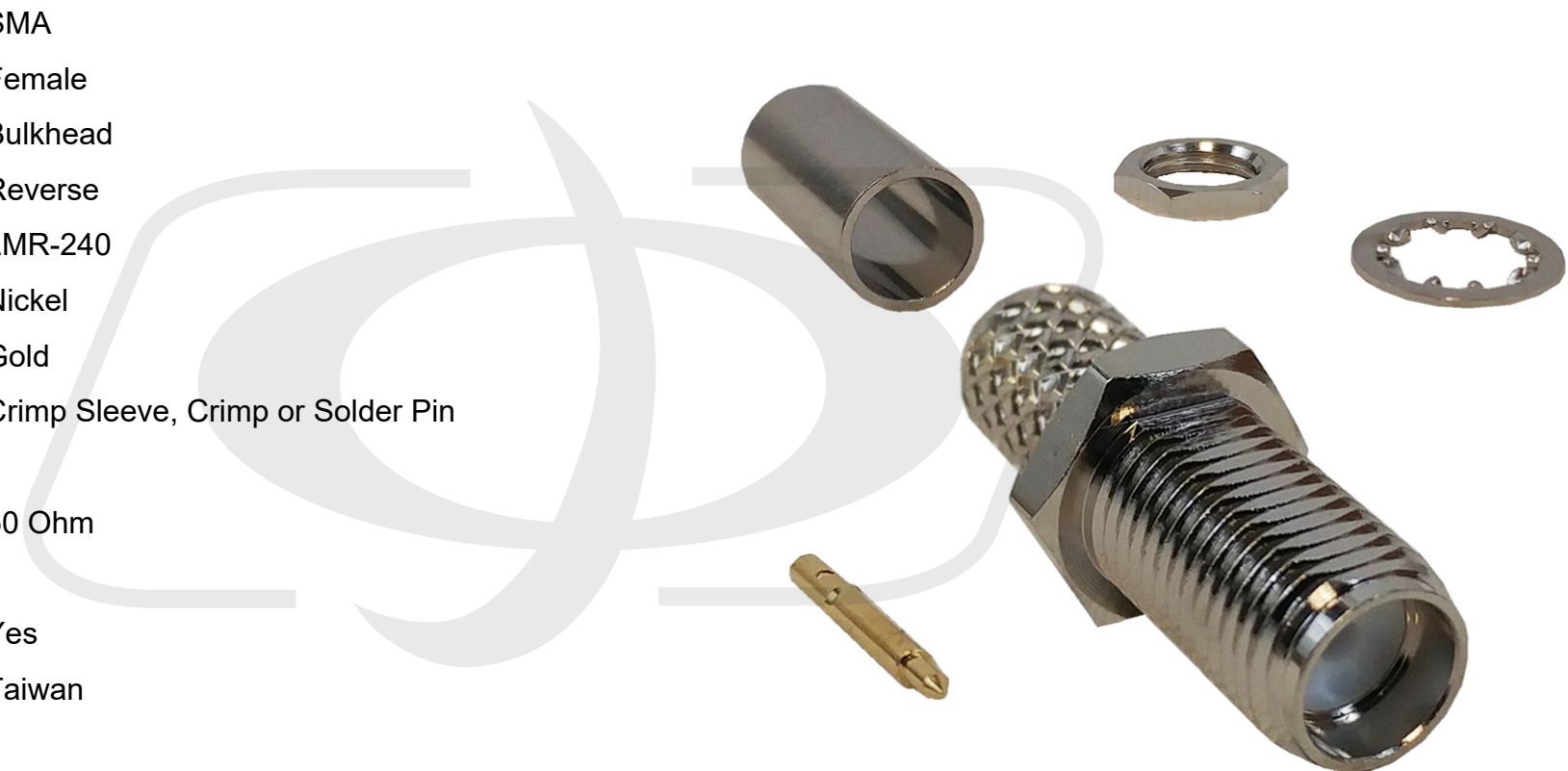
Impedance	50 Ohm
-----------	--------

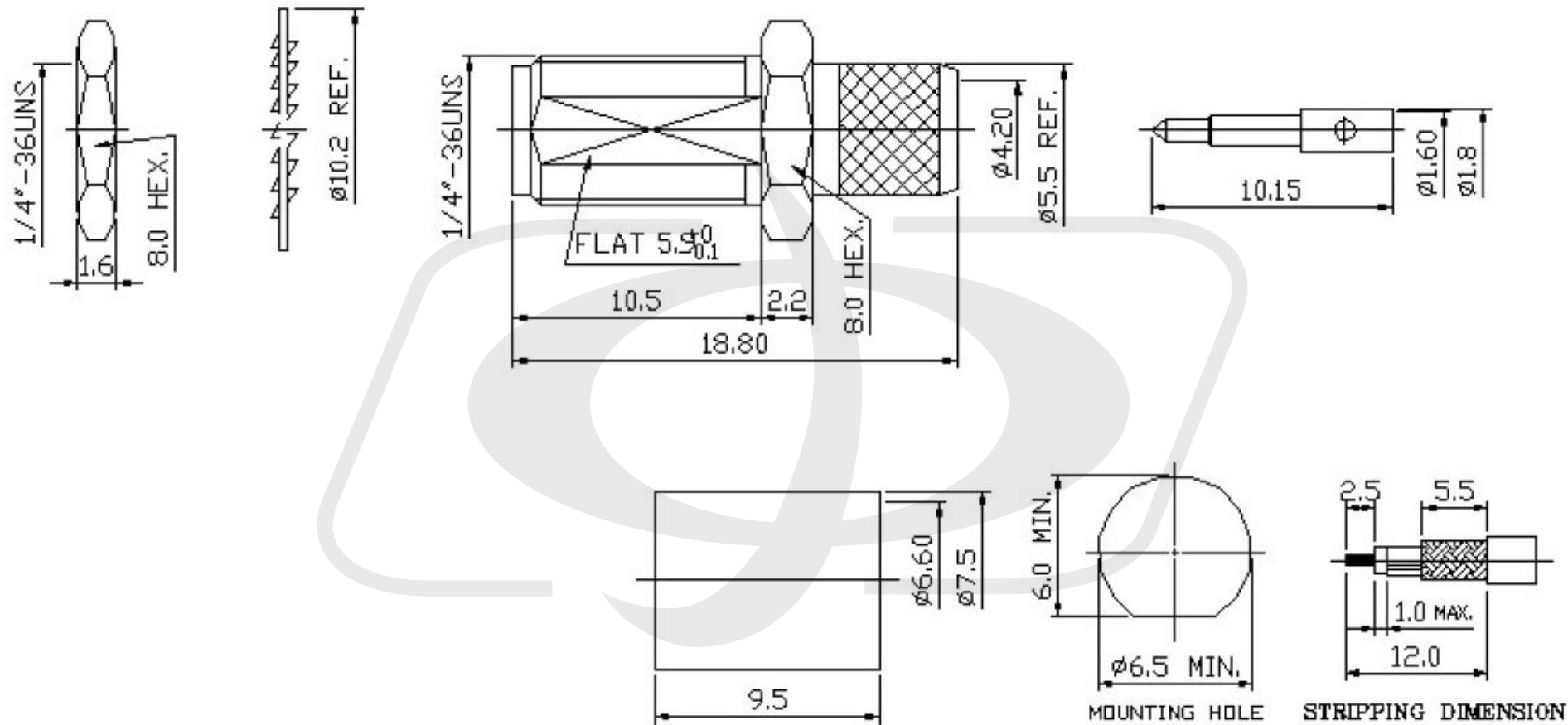
Product Support

RoHS	Yes
Country of Origin	Taiwan

Packaging Information

Package Quantity	1
Product Weight	0.02 lbs [0.01 kg]





Tolerance

x.	±0.2
xx.	±0.1
xxx.	±0.05
Angle	±0.5°