



SMA Reverse Polarity Female Crimp Connector for LMR-240 50 Ohm

CN-13-240 - Specifications

Description

This SMA female reverse polarity crimp connector is meant to be terminated on LMR-240 bulk cable.

Physical Characteristics

Connector	SMA
Gender	Female
Polarity	Reverse
Cable Type	LMR-240
Connector Plating	Nickel
Contact Plating	Gold
Attachment Method	Crimp Sleeve, Crimp or Solder Pin

Performance

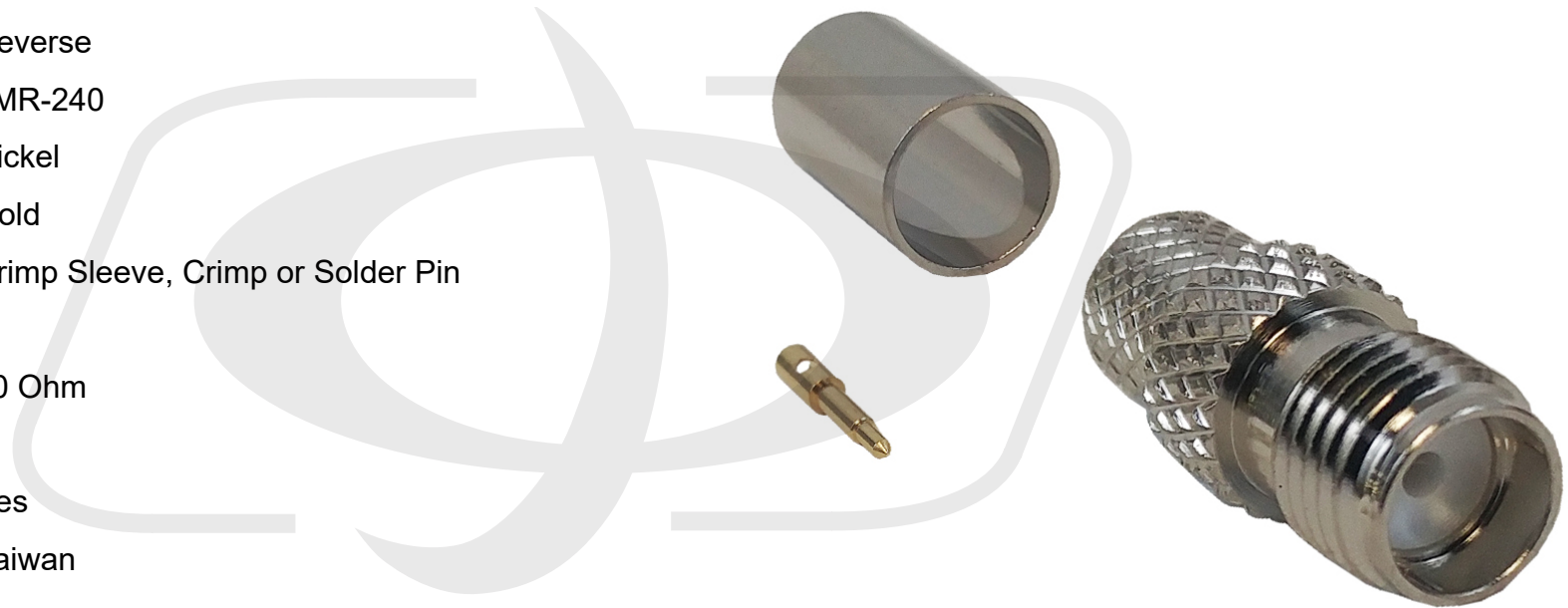
Impedance	50 Ohm
-----------	--------

Product Support

RoHS	Yes
Country of Origin	Taiwan

Packaging Information

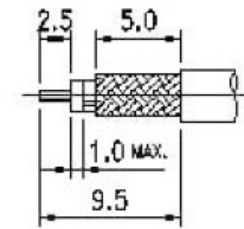
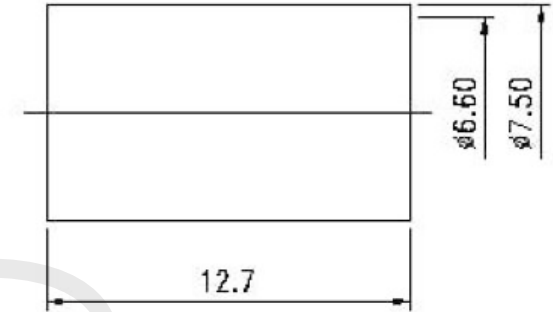
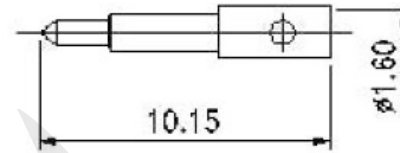
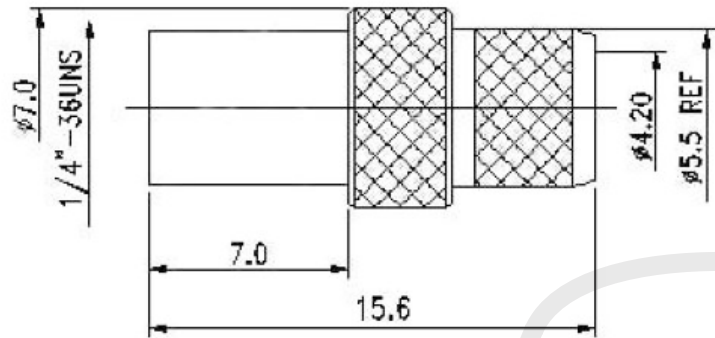
Package Quantity	1
Product Weight	0.03 lbs [0.01 kg]





SMA Reverse Polarity Female Crimp Connector for LMR-240 50 Ohm

CN-13-240 - Line Drawing



STRIPPING DIMENSION

Tolerance

x.	± 0.2
xx.	± 0.1
xxx.	± 0.05
Angle	$\pm 0.5^\circ$