



**Description**

This Cat6 shielded ethernet cable consists of a RJ45 male on one end and a RJ45 male on the other. It is typically used for ethernet network connections such as patch panels, switches and computers to routers. The shielding helps protect against electro-magnetic (EMI) and radio frequency interference (RFI). These cables are Fluke® Cat6 patch cable certified and come with an individual test report. The cable jacket is also CMR (riser) fire rated.

**Physical Characteristics**

Colors Available	Black / Blue / Green / Grey / Red / White / Yellow
Connector Plating	Gold Plated 50 Micron
Cable Diameter	6mm
Wire Gauge	26AWG Stranded
Shielding	F/FTP (Foil Shield on Individual Pairs plus Overall Foil Shield)
Pairs	4
Fire Rating	CMR (FT4 Riser Rated)
Molding	Assembled Tab Style Strain Relief
Temperature Rating	75°C
Jacket Type	PVC

**Connectors**

Connector A	RJ45 Shielded Long Body Male
Connector B	RJ45 Shielded Long Body Male

**Performance**

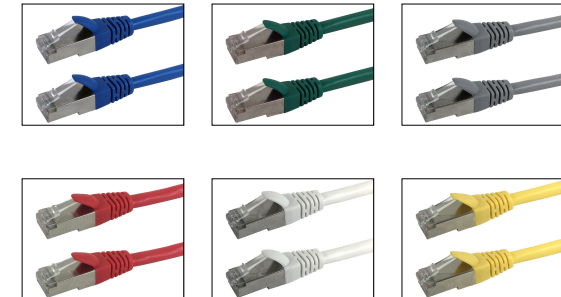
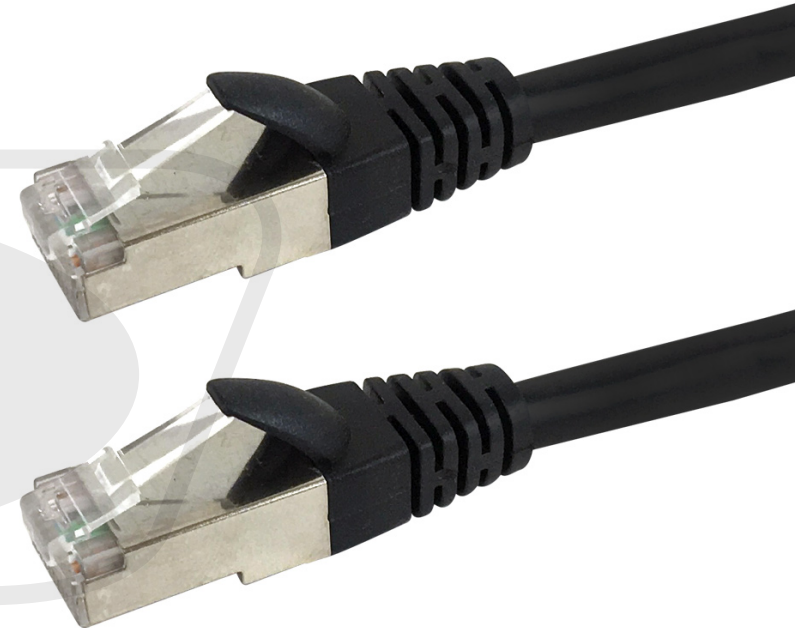
Fluke® CAT6 Patch Cable Test	Yes, with Test Report
------------------------------	-----------------------

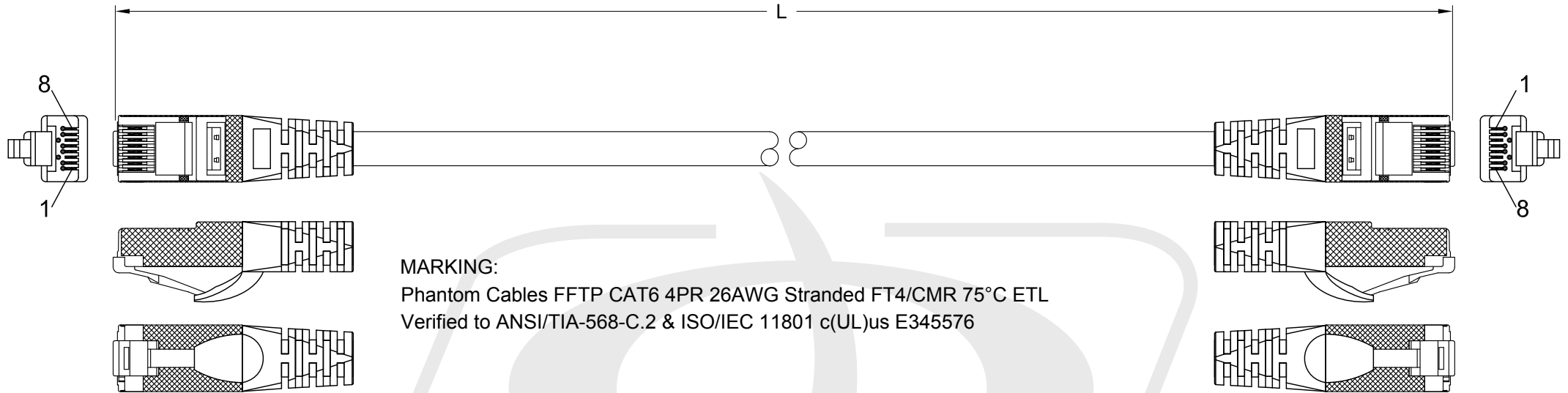
**Approvals/Environmental**

c(UL)us	Yes - Cable
RoHS	Yes
Reach	Yes
Conflict Materials	Yes

**Warranty Information**

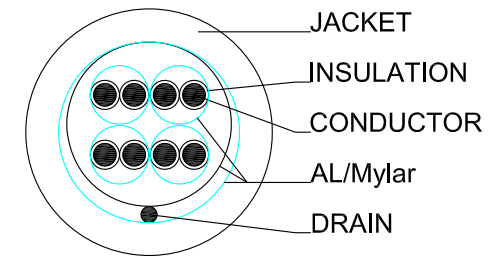
Warranty	Limited Lifetime
----------	------------------





MARKING:  
 Phantom Cables FFTP CAT6 4PR 26AWG Stranded FT4/CMR 75°C ETL  
 Verified to ANSI/TIA-568-C.2 & ISO/IEC 11801 c(UL)us E345576

P1		P2	
1		1	WHITE/ORANGE
2		2	ORANGE
3		3	WHITE/GREEN
6		6	GREEN
4		4	BLUE
5		5	WHITE/BLUE
7		7	WHITE/BROWN
8		8	BROWN
S		S	SHIELDED



**ELECTRICAL TEST:**

1. 100% OPEN&SHORT TEST
2. CONTACT RESISTANCE: 20 Ohm (MAX)
3. INSULATION RESISTANCE: 10 MOhm (MIN) DC 300V/10mS
4. PASS FLUKE TIA/EIA PATCH CORD TEST.

