



# RJ45 Cat6 550MHz Clear Molded Boot Patch Cable

CAT6CB-xxYY - Specifications

**Description**

This Cat6 ethernet cable consists of a RJ45 male on one end and a RJ45 male on the other. It is typically used for ethernet network connections such as patch panels, switches and computers to routers.

**Physical Characteristics**

Colors Available	Black / Blue / Green / Grey / Orange / Purple / Red / White / Yellow
Connector Plating	Gold Plated 50 Micron
Cable Diameter	6.2mm
Wire Gauge	24AWG Stranded
Shielding	UTP (Unshielded)
Pairs	4
Fire Rating	CM
Color Code	568B
Molding	Molded Tab Style Strain Relief
Jacket Temperature Rating	+75C deg C
Jacket Type	PVC

**Connectors**

Connector A	RJ45 Long Body Male
Connector B	RJ45 Long Body Male

**Performance**

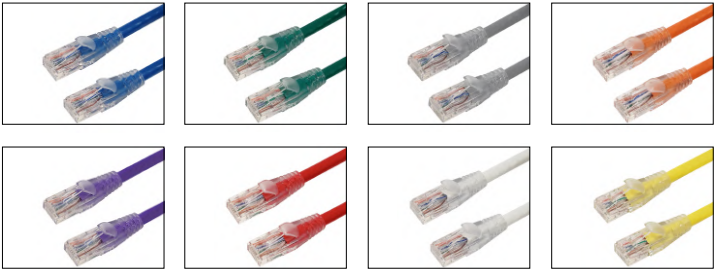
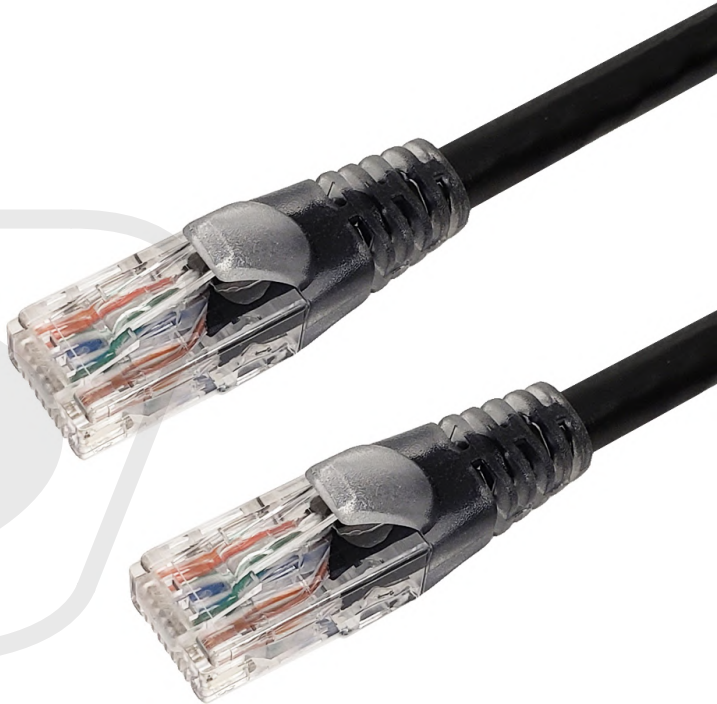
CAT6 Fluke® Patch Cable Test	Yes
Frequency	550 MHz

**Approvals/Product Support**

c(UL)us	Yes - Cable
ETL Verified	Yes
ANSI/TIA - 568 - C.2	Yes
RoHS, Reach, Conflict Materials	Yes
Country of Origin	Vietnam

**Warranty Information**

Warranty	Limited Lifetime
----------	------------------





# RJ45 Cat6 550MHz Clear Molded Boot Patch Cable

CAT6CB-xxYY - Line Drawing

